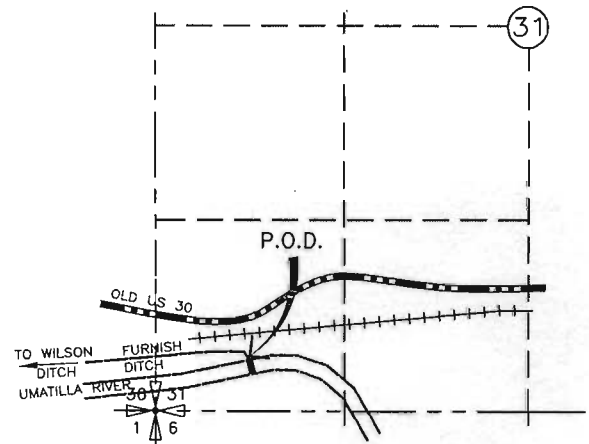
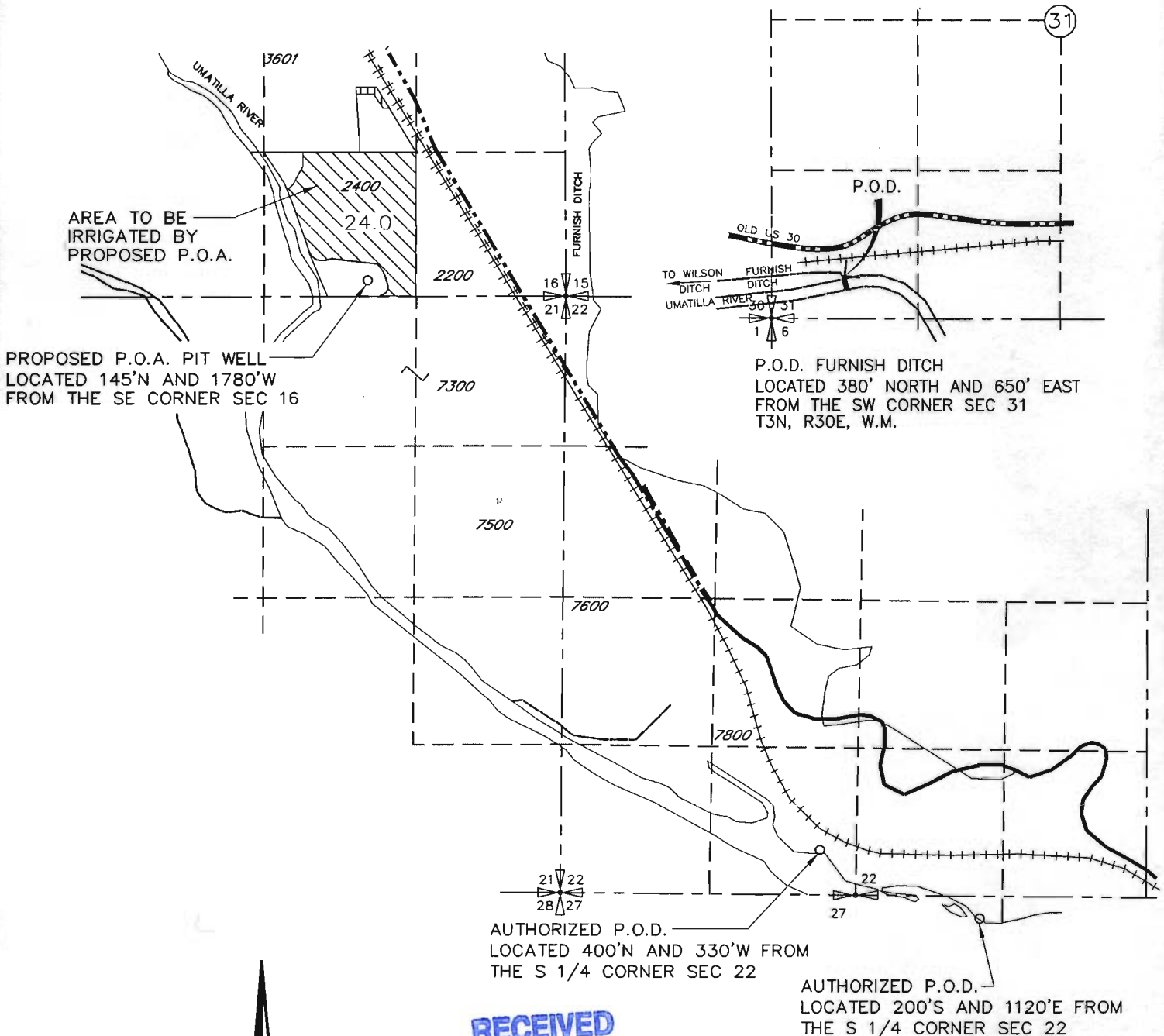


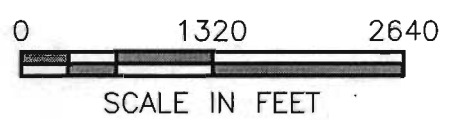
TRANSFER APPLICATION MAP FOR JASON HILL CHANGING P.O.D. FOR A PORTION OF CERTIFICATE 80979 T3N, R29E, W.M.



P.O.D. FURNISH DITCH
LOCATED 380' NORTH AND 650' EAST
FROM THE SW CORNER SEC 31
T3N, R30E, W.M.

AUTHORIZED P.O.D.
LOCATED 400'N AND 330'W FROM
THE S 1/4 CORNER SEC 22

AUTHORIZED P.O.D.
LOCATED 200'S AND 1120'E FROM
THE S 1/4 CORNER SEC 22



RECEIVED

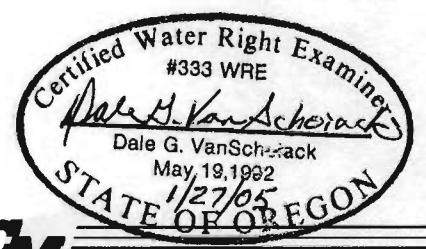
APR 02 2007

WATER RESOURCES DEPT
SALEM, OREGON

RECEIVED

SEP 26 2005

WATER RESOURCES DEPT
SALEM, OREGON



Consultants, Inc.
A Tetra Tech Company

NOTE:
THE PURPOSE OF THIS MAP IS TO IDENTIFY THE APPROXIMATE LOCATION
OF THE WATER RIGHT. IT IS NOT INTENDED TO PROVIDE INFORMATION
RELATIVE TO THE LOCATION OF PROPERTY OWNERSHIP BOUNDARY LINES.

DRAWING: H:\CAD\AG\3522\192\3522192TR.DWG
PRINTED BY: RogerW on 01/27/05 02:00 PM

T-10009