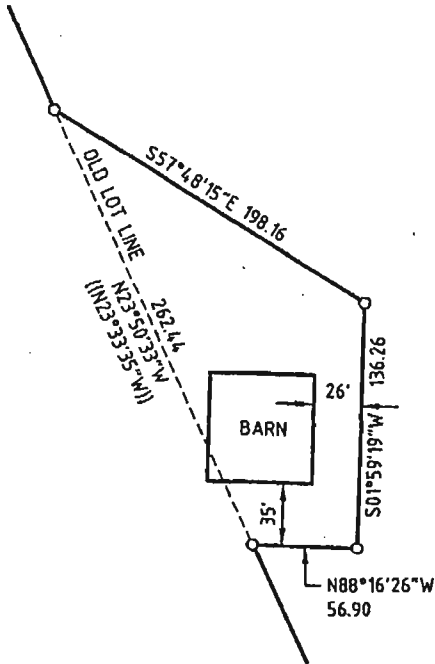
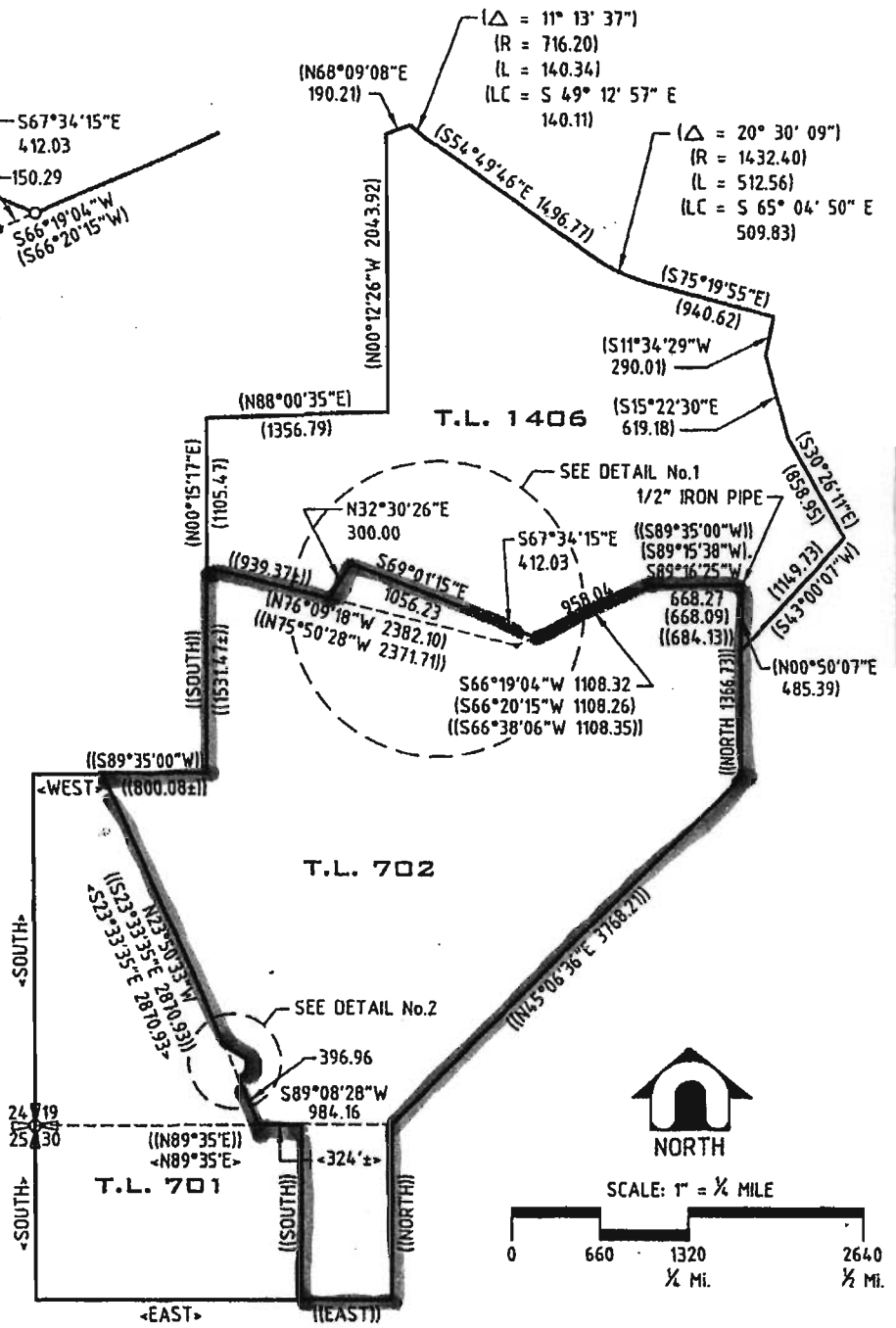


**DETAIL No. 1**  
SCALE: 1" = 660'



**DETAIL No. 2**  
SCALE: 1" = 100'



REGISTERED  
PROFESSIONAL  
LAND SURVEYOR

OREGON  
JULY 18, 1980  
JERRY C. POWELL  
1919

RENEWS 12-31-2002



**DAVID EVANS AND ASSOCIATES INC.**  
709 NW Wall Street, Suite 102  
Bend, Oregon 97701 (541) 388-2600

**LOT LINE ADJUSTMENT**  
TAX LOTS 1406, 702, AND 701  
LOCATED IN SECTIONS 17, 18, 19, 20, & 30  
R. 14 S., R. 12 E., W. M.  
DESCHUTES COUNTY, OREGON

SEP 26 2005

WATER RESOURCES DEPT  
SALEM OREGON

T-10011

scale 1" = 1320' design JCP  
date 06/07/01 drawn JHL  
file MAY00001 - MAY00001-LLA.DWG