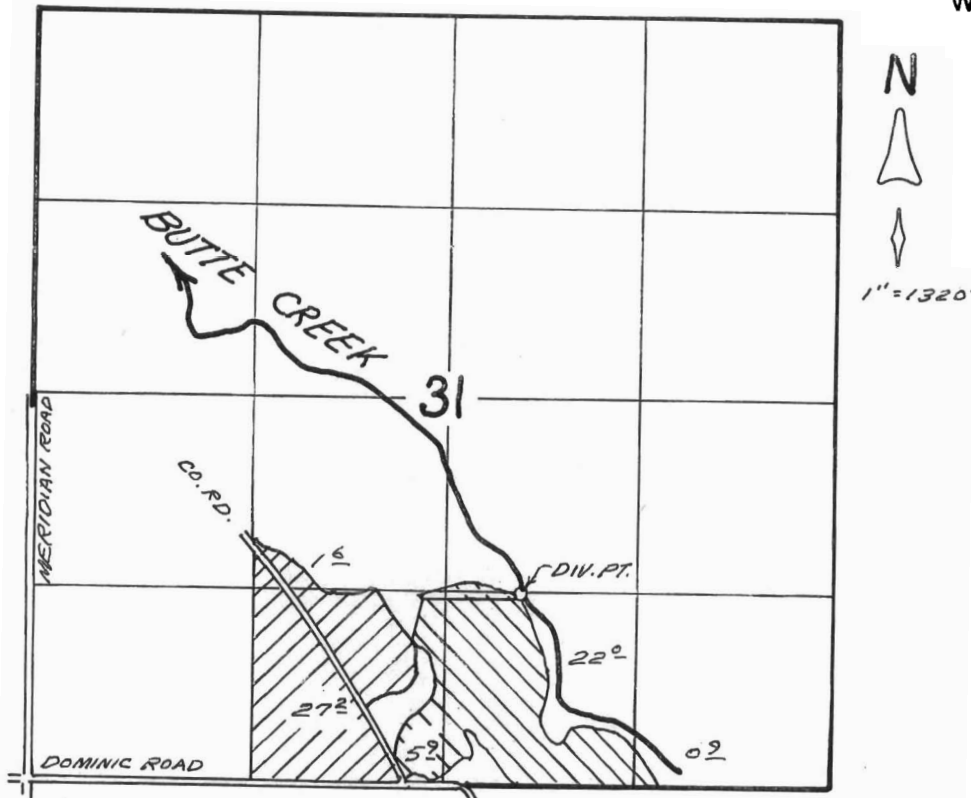


TOWNSHIP 5 SOUTH, RANGE 1 EAST, W.M.

RECEIVED

APR - 6 2000

WATER RESOURCES DIV.  
SALEM, OREGON



DIV. PT. LOCATED 1300' N. AND 500' E. FROM S. 1/4 COR. SEC 31

FROM  TO  REMAINING 

T-8480

MAP TO ACCOMPANY  
TEMPORARY TRANSFER APPLICATION  
IN THE NAME OF

DICKMAN FARMS, INC.