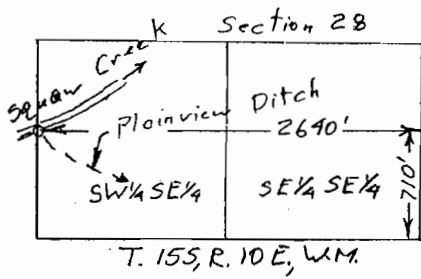


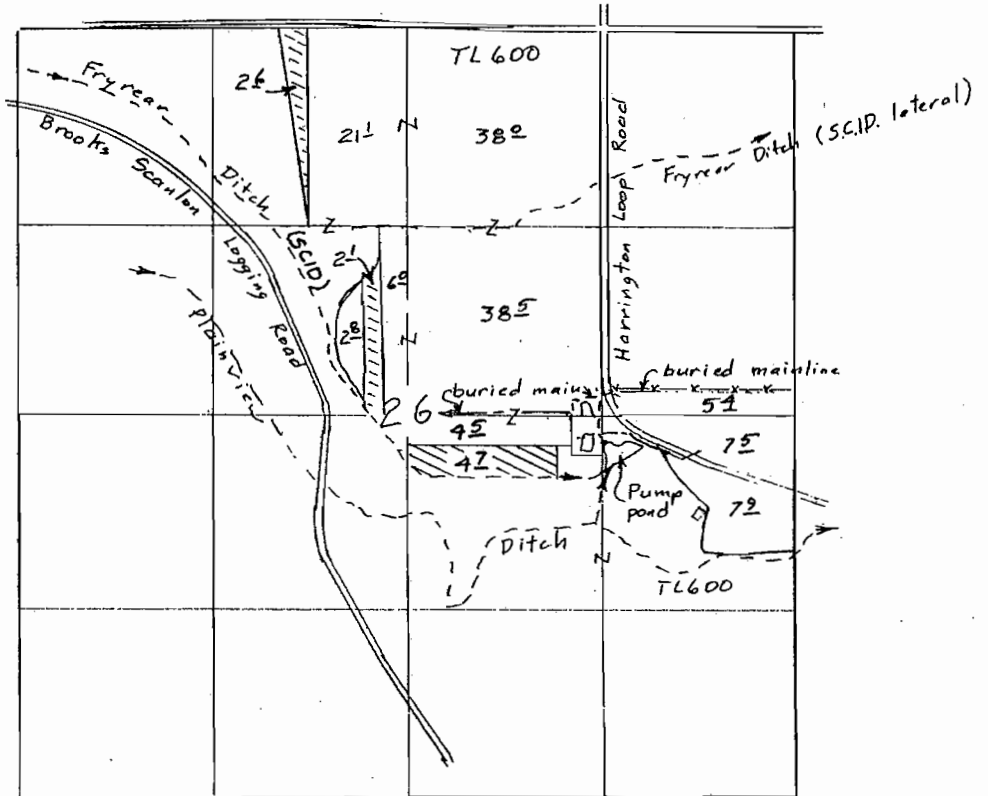
TOWNSHIP 15 SOUTH, RANGE 10 EAST, W.M.



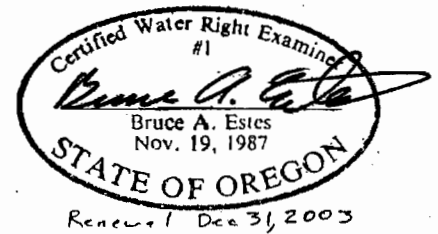
Scale 1" = 1320'

From 1904 47 To 1904 47

Surveyed Oct 25, 2002



Transfer Application Map
for
Weldon Wankier
(Black Diamond Ranch)



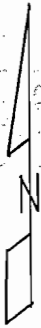
This map is for the purpose of locating a water right only and has no intent to provide legal dimensions or the location of property lines.

ESTES SURVEYS, LLC

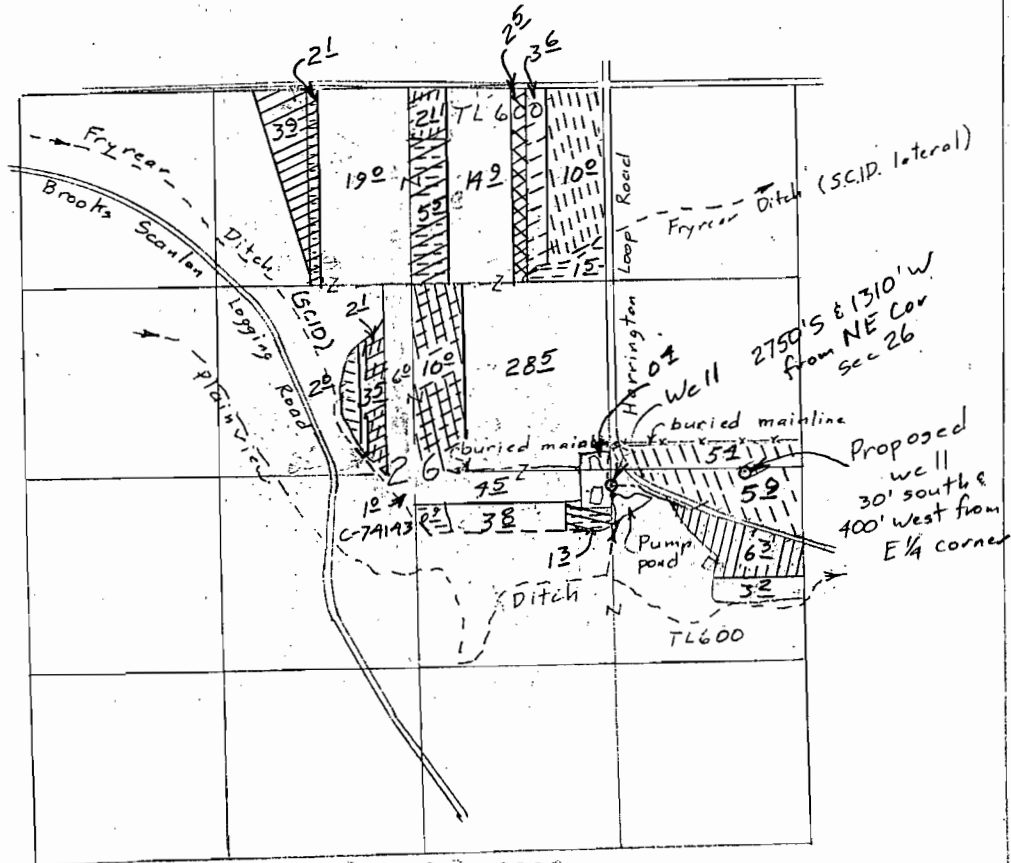
PO Box 17519 60382 Arnold Rd
Salem, OR 97305-7519 Bend, OR 97702
(503) 585-7593 (541) 382-7391

T-9571

TOWNSHIP 15 SOUTH, RANGE 10 EAST, W.M.



Scale
 1" = 1320'
 (4" = 1 mile)



- C-74143
 From ⊖ Primary 2^o acres
 To ⊖ Primary 1³ acres
 From ⊕ Supp (1904) 5⁶ acres
 To ⊕ Supp (1904) 6³ acres

- C-74142
 From ⊕ Supp (1885) 10^o acres
 To ⊕ Supp (1885) 10^o acres
 From ⊖ Supp (1895) 13⁶ acres
 To ⊖ Supp (1895) 13⁶ acres
 From ⊖ Supp (1904) 11³ acres
 To ⊖ Supp (1904) 0^o
 To ⊕ Supp (1904) & Δ POA 11³ acres

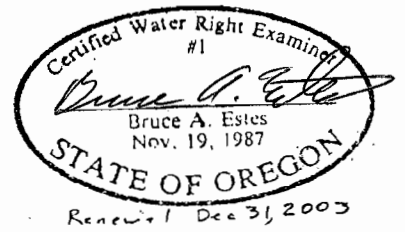
⊗ Cancel Supp (1895) 2⁵ acres

Transfer Application Map
 for

Weldon Wankier
 (Black Diamond Ranch)

T-9571

AUG 01 2005



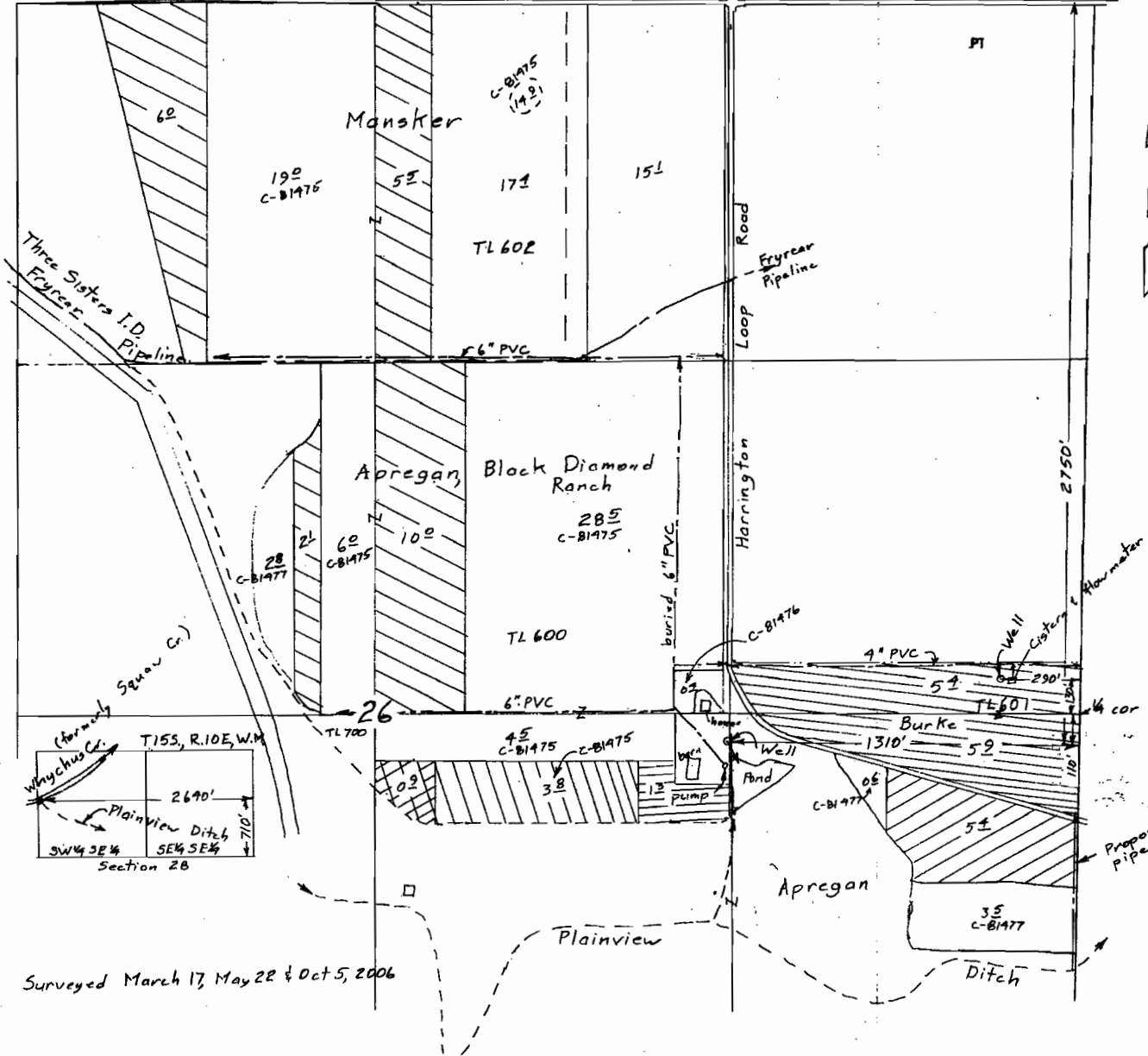
Sheet 2 of 2

ESTES SURVEYS, LLC
 PO Box 17519 60382 Arnold Rd
 Salem, OR 97305-7519 Bend, OR 97702
 (503) 585-7593 (541) 382-7391

This map is for the purpose of locating a water right only and has no intent to provide legal dimensions or the location of property lines.

Amended 3/8/05 7/20/05
 415/03

TOWNSHIP 15 SOUTH, RANGE 10 EAST, W.M.



Claim of Beneficial Use Map
for
Craig Apregan, Mike Mansker
and Doug & Barbara Burke

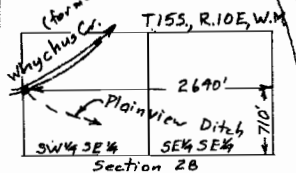
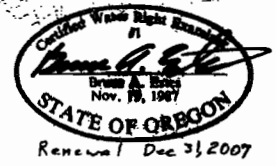
RECEIVED
MAR 06 2007
WATER RESOURCES DEPT
SALEM, OREGON

Scale 1" = 400'

T- 9571

- Trsf Order
- ⊖ #10 (Burke) 112 acres supp to 1904
 - ⊖ #11 (Mansker) 112 acres supp to 1895
(Apregan) 102 acres supp to 1885
21 acres supp to 1895
 - ⊖ #14 (Apregan) 12 acres primary
 - ⊖ #17 (Apregan) 62 acres supp to 1904
 - ⊖ #19 (Apregan) 42 acres 1904 primary

COMMP # 0260



Surveyed March 17, May 22 & Oct 5, 2006

This map is for the purpose of locating a water right only and has no intent to provide legal dimensions or the location of property lines.

ESTES SURVEYS, LLC
PO Box 17518 Salem, OR 97302-7518 (503) 586-7383
60382 Arnold Rd Bend, OR 97702 (541) 382-7391