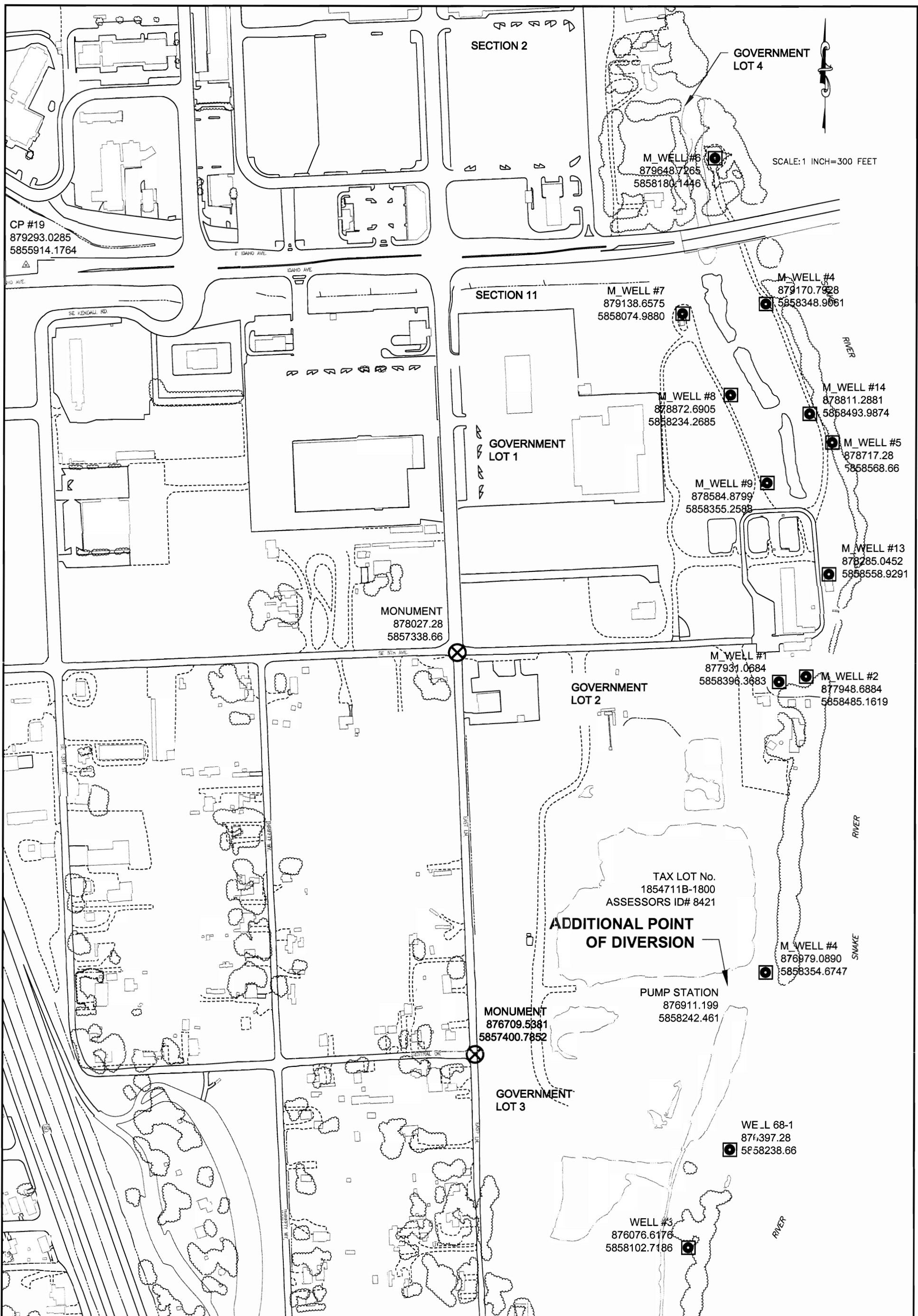


T9576



CP #19
879293.0285
5855914.1764

SECTION 2

GOVERNMENT LOT 4

SCALE: 1 INCH=300 FEET

M_WELL #6
879648.7265
5858180.1446

SECTION 11

M_WELL #7
879138.6575
5858074.9880

M_WELL #4
879170.7928
5858348.9061

GOVERNMENT LOT 1

M_WELL #8
878872.6905
5858234.2685

M_WELL #14
878811.2881
5858493.9874

M_WELL #9
878584.8799
5858355.2588

M_WELL #5
878717.28
5858568.66

MONUMENT
878027.28
5857338.66

M_WELL #13
878285.0452
5858558.9291

M_WELL #1
877931.0684
5858396.3683

GOVERNMENT LOT 2

M_WELL #2
877948.6884
5858485.1619

TAX LOT No.
1854711B-1800
ASSESSORS ID# 8421

ADDITIONAL POINT OF DIVERSION

PUMP STATION
876911.199
5858242.461

M_WELL #4
876979.0890
5858354.6747

MONUMENT
876709.5381
5857400.7852

GOVERNMENT LOT 3

WE_L 68-1
874397.28
5858238.66

WELL #3
876076.6176
5858102.7186

REUSE OF DOCUMENTS
THIS DOCUMENT AND THE DATA
HEREIN, AS AN INSTRUMENT OF
SERVICE, IS THE PROPERTY OF
HOLLADAY ENGINEERING CO.
AND IS NOT TO BE REPRODUCED,
COPIED, OR TRANSMITTED IN ANY
MANNER WITHOUT THE WRITTEN
CONSENT OF HOLLADAY ENGINEERING
CO.

JOB NO.
ON 031903 A

CADD FILES
© 2003 HOLLADAY ENGINEERING CO.

DATE: 9-19-03

PLOTTED: 9-19-03

DRAWN BY: MGM

CHECKED BY: MEH

SHEET

APPLICATION MAP CITY OF ONTARIO, OR

HOLLADAY ENGINEERING CO.
ENGINEERS • CONSULTANTS

32 N. MAIN P.O. BOX 235 PAYETTE, ID 83661
(208) 642-3304 • FAX# (208) 642-2159
EMAIL: hec@holladayengineering.com