

T-8497

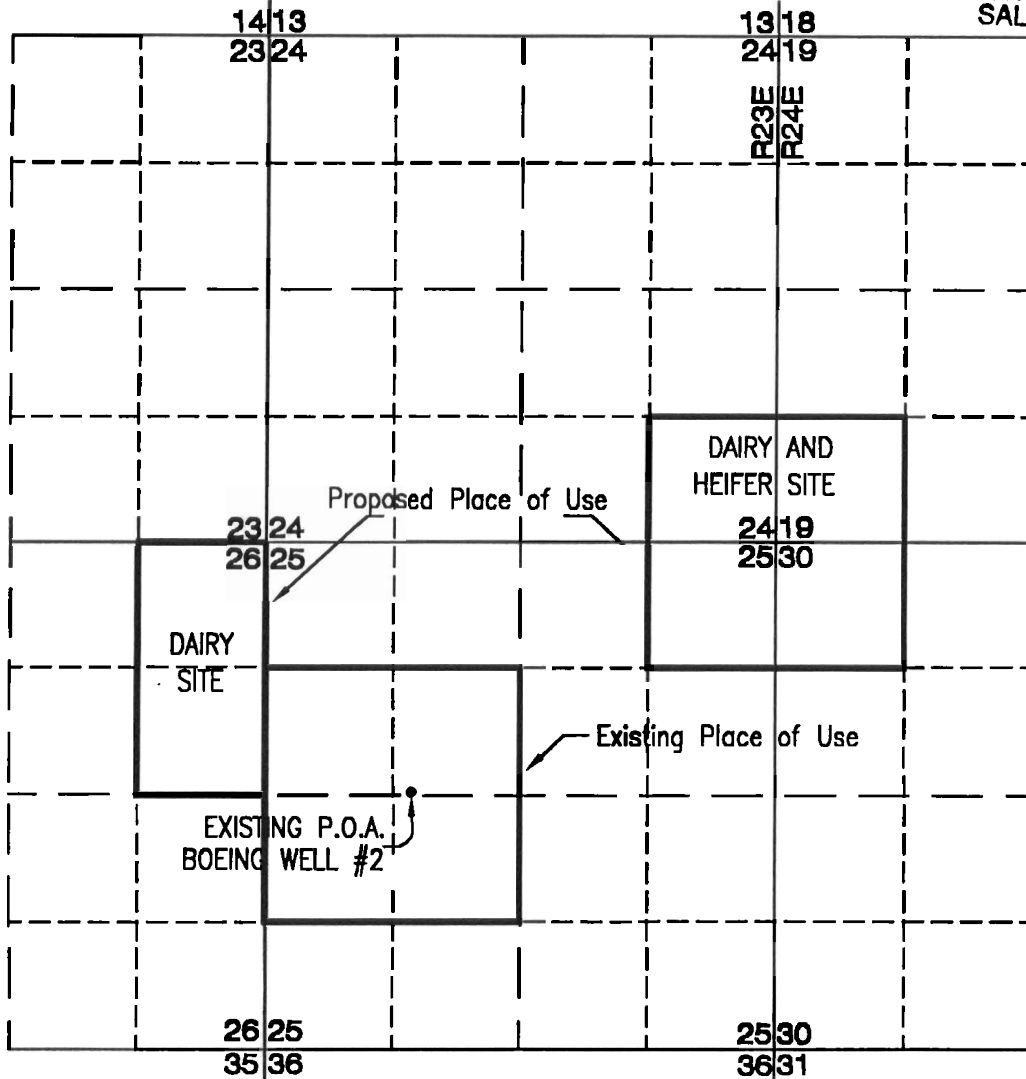
RECEIVED

APR 17 2000



T3N, R23E, WM

WATER RESOURCES DEPT.
SALEM, OREGON



Point of Appropriation (P.O.A.) is located in the SE 1/4 NW 1/4, Section 25, T. 3 N., R. 23 E., W. M., 2610 feet South and 1510 feet East from NW Corner, Section 25.

Current use: Hay Processing Facility, bale compress and cuber

Proposed use: Livestock water, dairy parlor and cleaning water

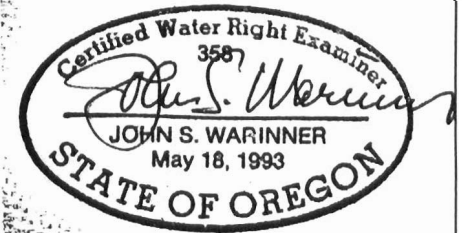
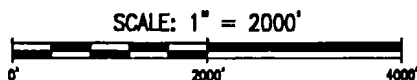


Exhibit A
TRANSFER MAP
Change of Use and Place of Use

In The Name Of:
Threemile Farms, Inc.
Surveyed, April 10, 2000, by John Fazio

Project Name:
Threemile Farms, Inc.
Boardman, OR
Project No. 00-06
Date:
04-11-00



Fountainhead
Irrigation, Inc.

PO Box 2197 Walla Walla, WA 99362
Phone (509) 529-2646 Fax (509) 522-5251