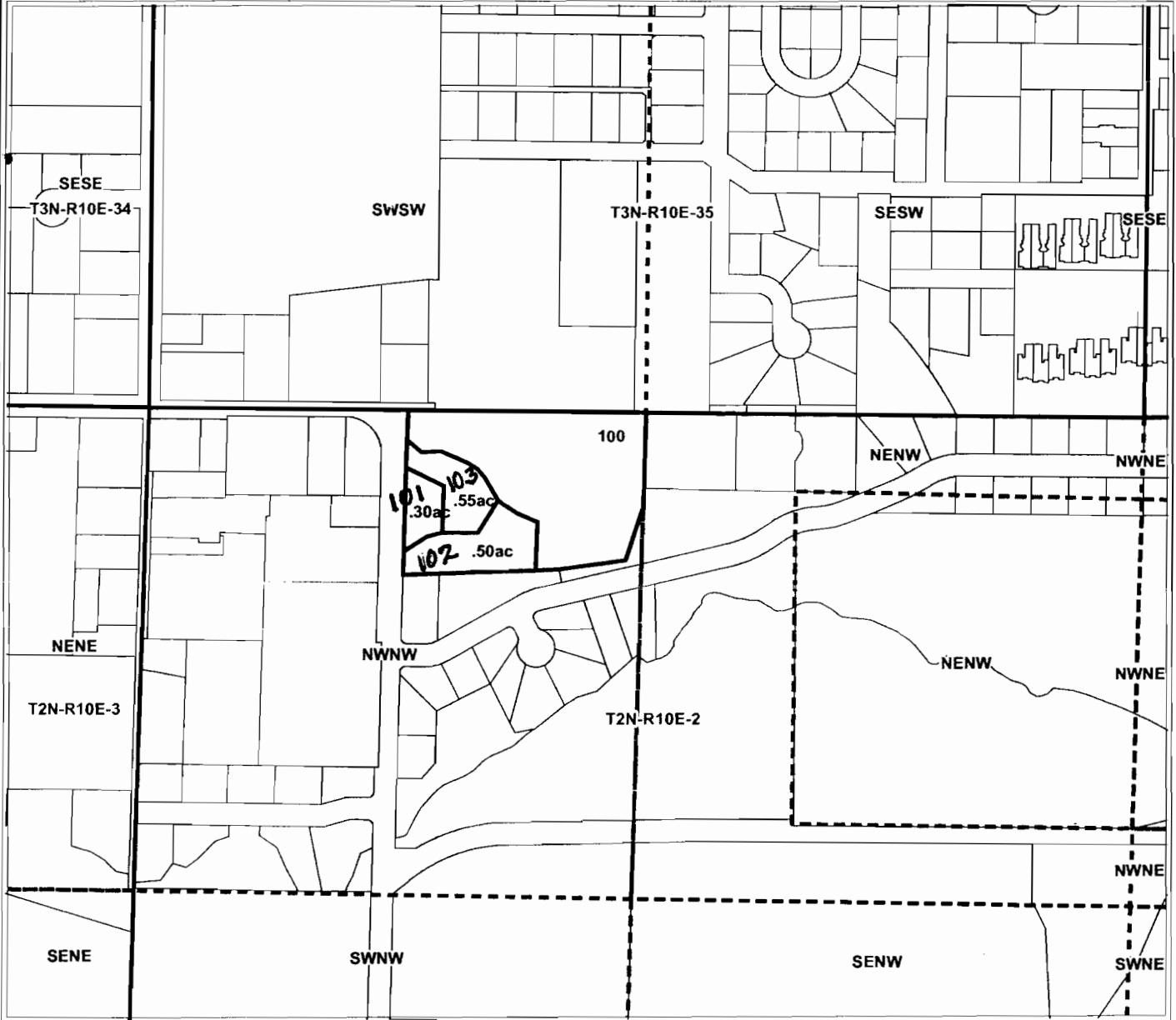


APPLICATION FOR WATER RIGHT TRANSFER

T2N. R10 SECTION 2



APPLICATION FOR DISTRICT PERMANENT WATER RIGHT TRANSFER
for
Hood River Valley Christian Church / Akin
Tax Lot 100 - 1.35 Acres
(Lot has since been subdivided into 101, 102, 103)
(0.6ac remains on lot 100)



Geo-Spatial Solutions, Inc.

www.geospatialolutions.com

Date Created: July 20, 2004



1 inch equals 400 feet

“TO”

BREAKDOWN
ea. amt
per TL

APPLICATION FOR WATER RIGHT TRANSFER

T2N. R10 SECTION 2



APPLICATION FOR DISTRICT PERMANENT WATER RIGHT TRANSFER
for
Hurley
Tax Lot 1701 - 0.05 Acres



Geo-Spatial Solutions, Inc.

www.geospatialsolutions.com

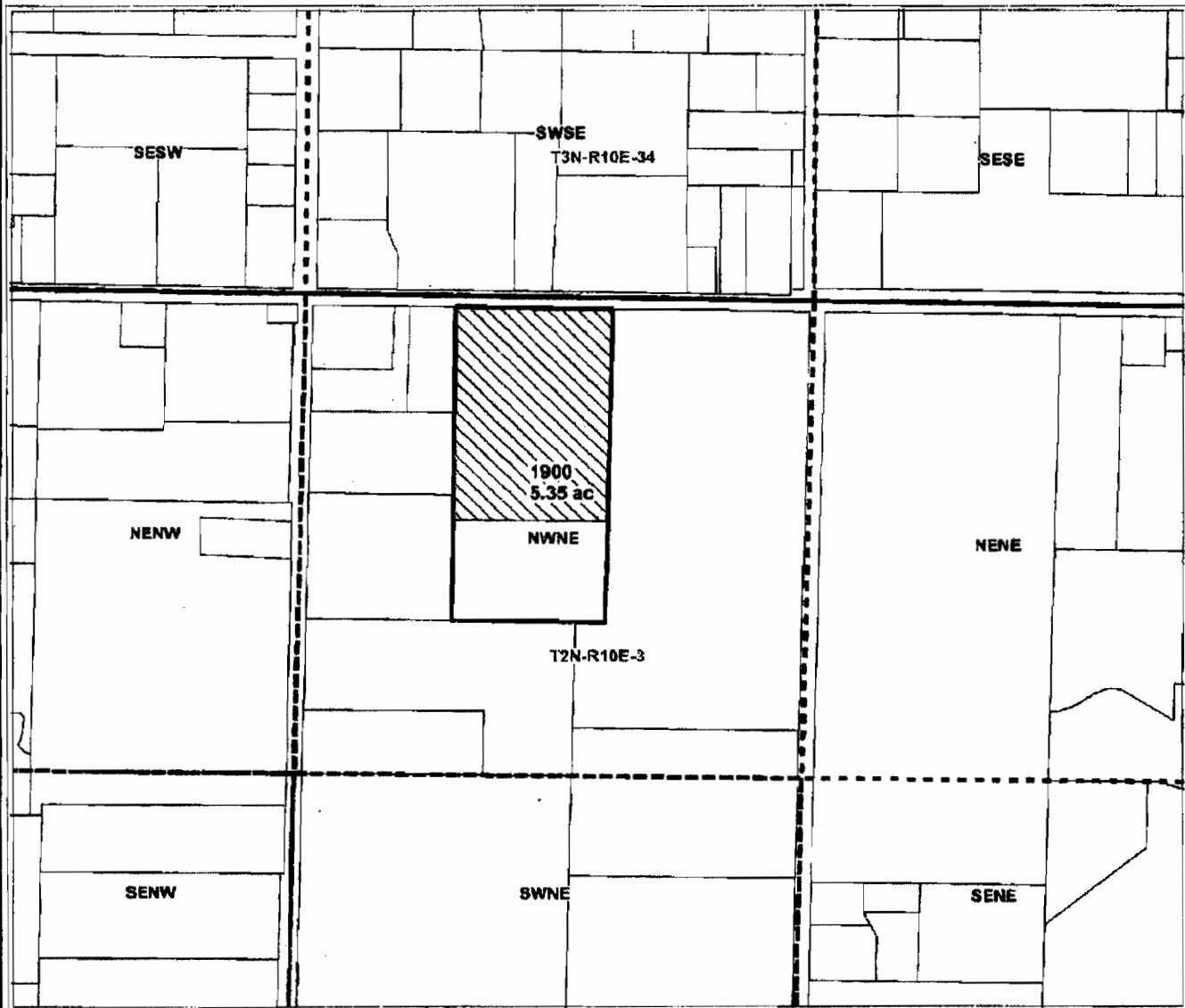
Date Created: April 27, 2004



1 inch equals 400 feet

✓

APPLICATION FOR WATER RIGHT TRANSFER T2N. R10 SECTION 3



APPLICATION FOR DISTRICT PERMANENT WATER RIGHT TRANSFER
for
Marchesi
Tax Lot 1900 - 5.35 Acres
(Certificate 74306)



Geo-Spatial Solutions, Inc.
www.geospatialsolutions.com

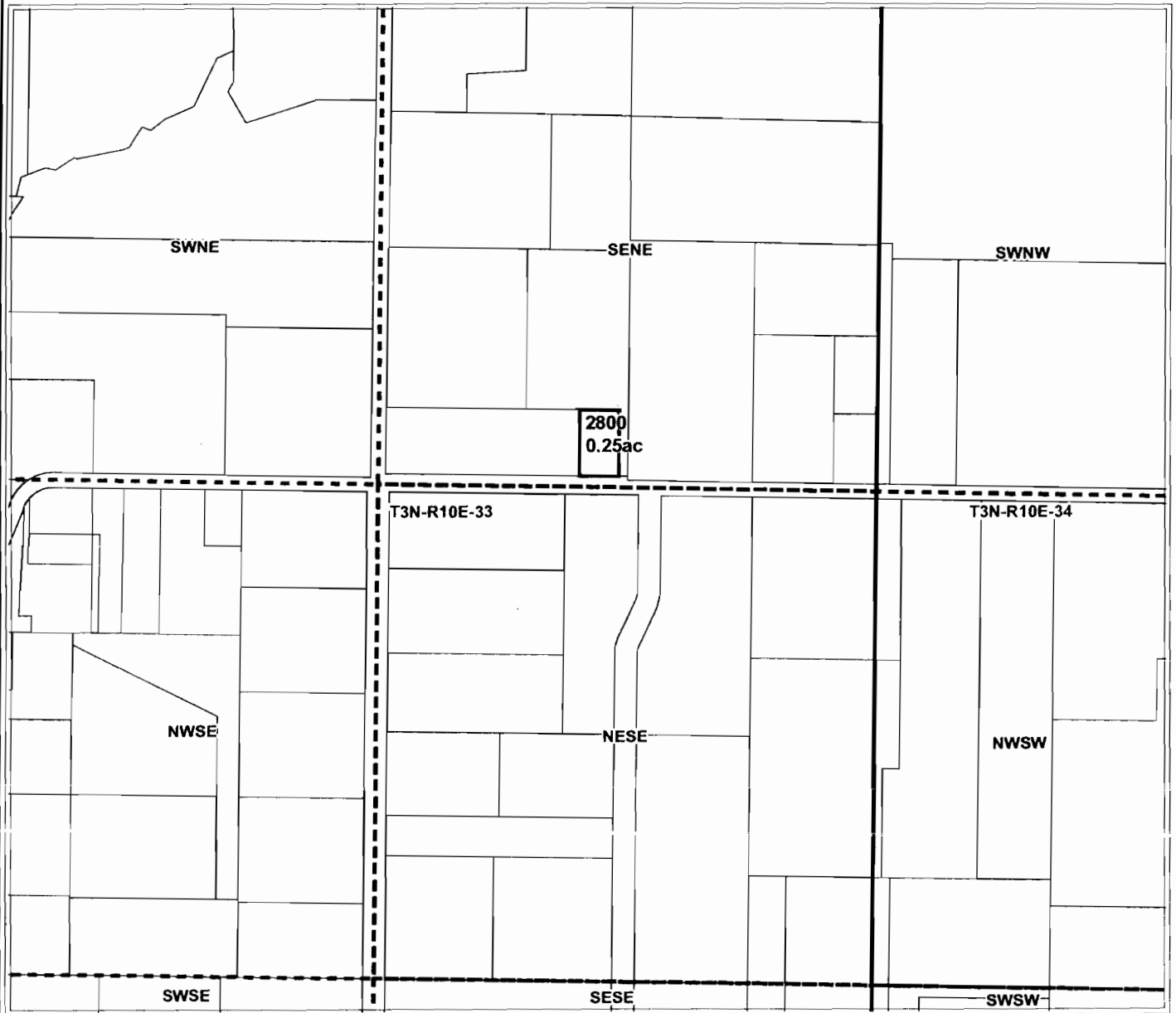
Date Created: August 03, 2004



1 inch equals 400 feet

APPLICATION FOR WATER RIGHT TRANSFER

T3N. R10 SECTION 33



APPLICATION FOR DISTRICT PERMANENT WATER RIGHT TRANSFER
for
Smith
Tax Lot 2800 - 0.25 Acres



Geo-Spatial Solutions, Inc.
www.geospatialolutions.com

Date Created: April 27, 2004



1 inch equals 400 feet



APPLICATION FOR WATER RIGHT TRANSFER

T3N. R10 SECTION 34



APPLICATION FOR DISTRICT PERMANENT WATER RIGHT TRANSFER
for
Gerde
Tax Lot 1607 - .50 Acres



Geo-Spatial Solutions, Inc.
www.geospatialsolutions.com

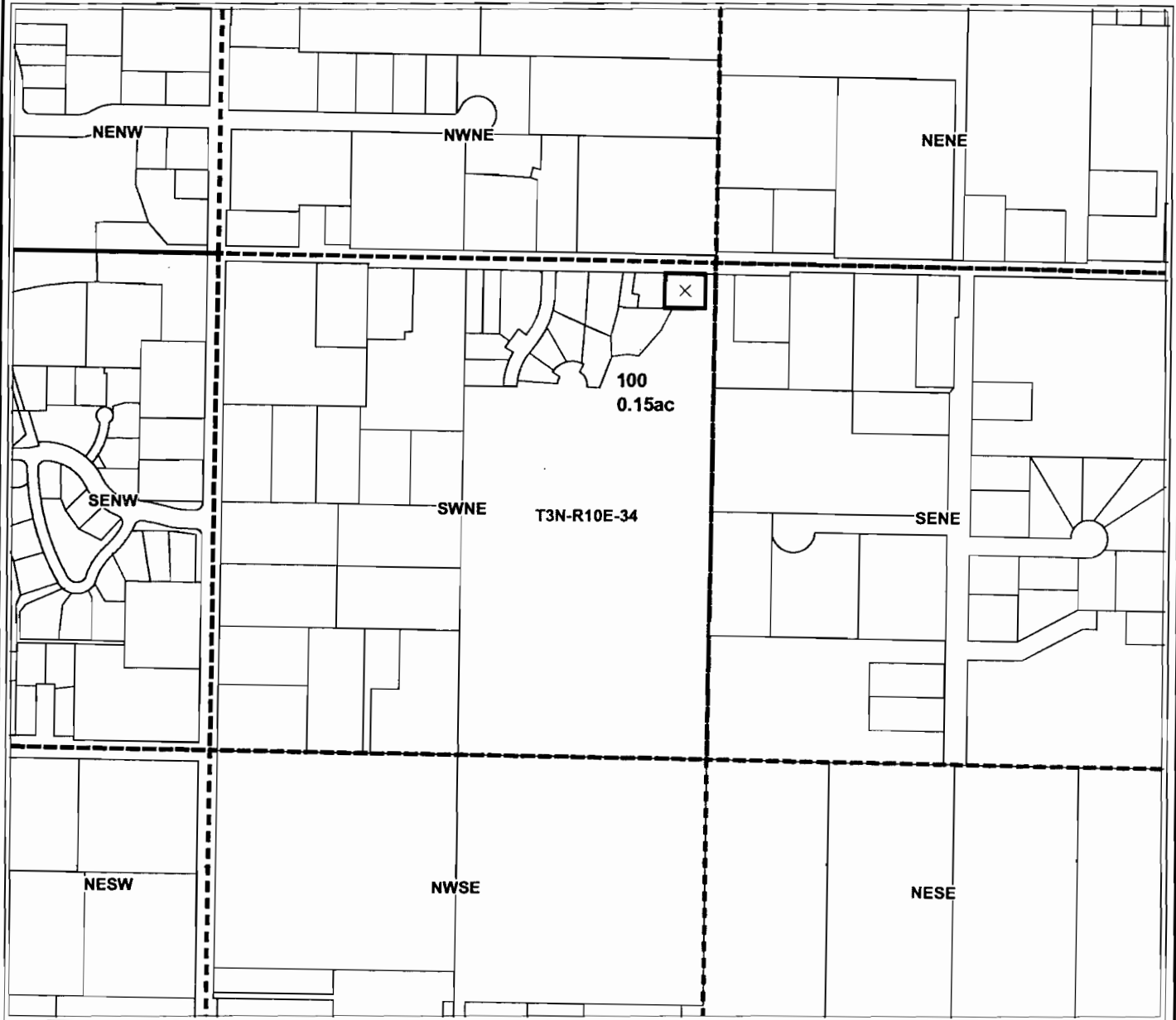
Date Created: August 03, 2004



1 inch equals 400 feet

APPLICATION FOR WATER RIGHT TRANSFER

T3N. R10 SECTION 34



APPLICATION FOR DISTRICT PERMANENT WATER RIGHT TRANSFER
for
Barone
Tax Lot 100 - 0.15 Acres



Geo-Spatial Solutions, Inc.

www.geospatialolutions.com

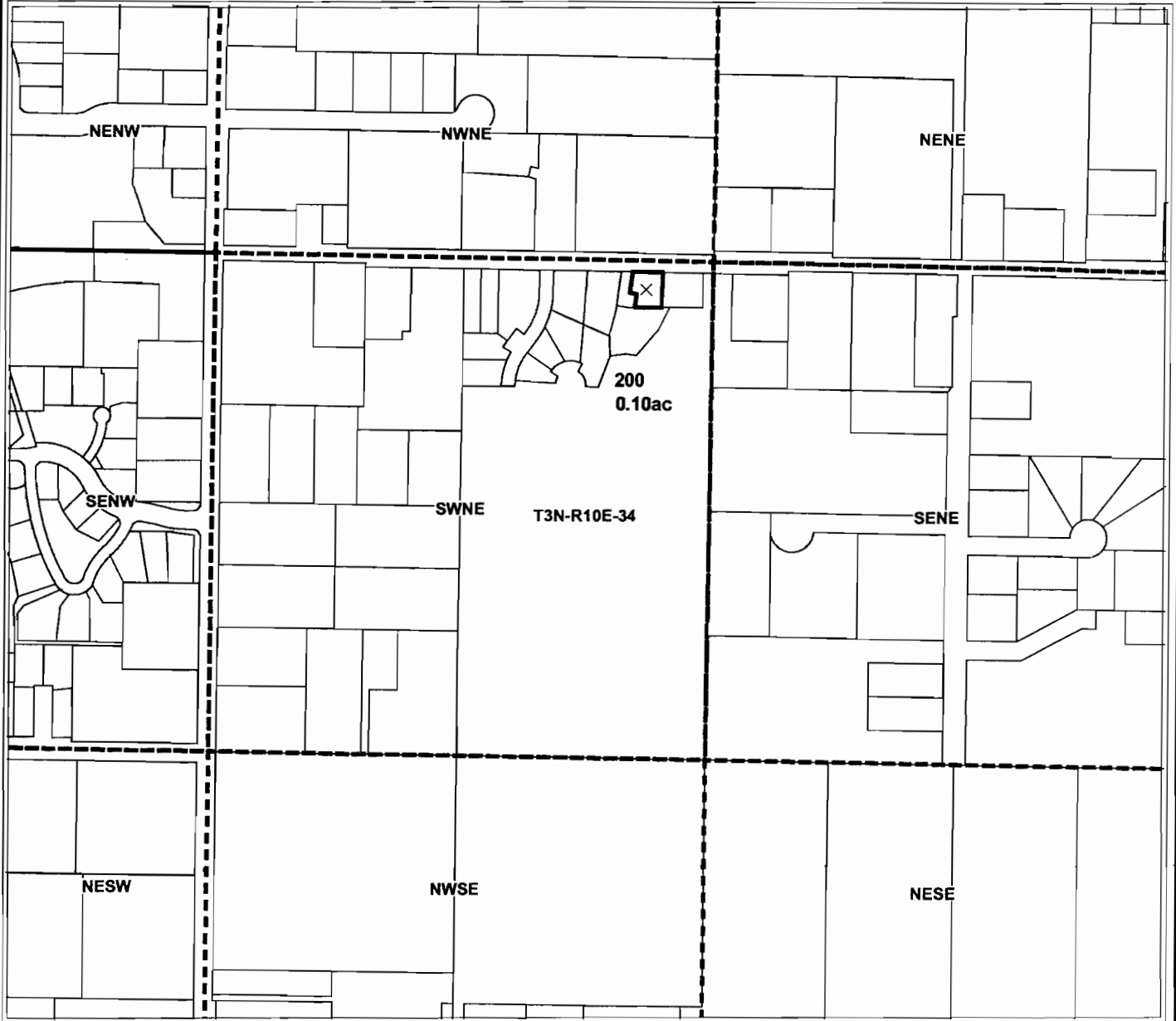
Date Created: July 20, 2004



1 inch equals 400 feet

APPLICATION FOR WATER RIGHT TRANSFER

T3N. R10 SECTION 34



APPLICATION FOR DISTRICT PERMANENT WATER RIGHT TRANSFER
for
Barone
Tax Lot 200 - 0.10 Acres



Geo-Spatial Solutions, Inc.

www.geospatialolutions.com

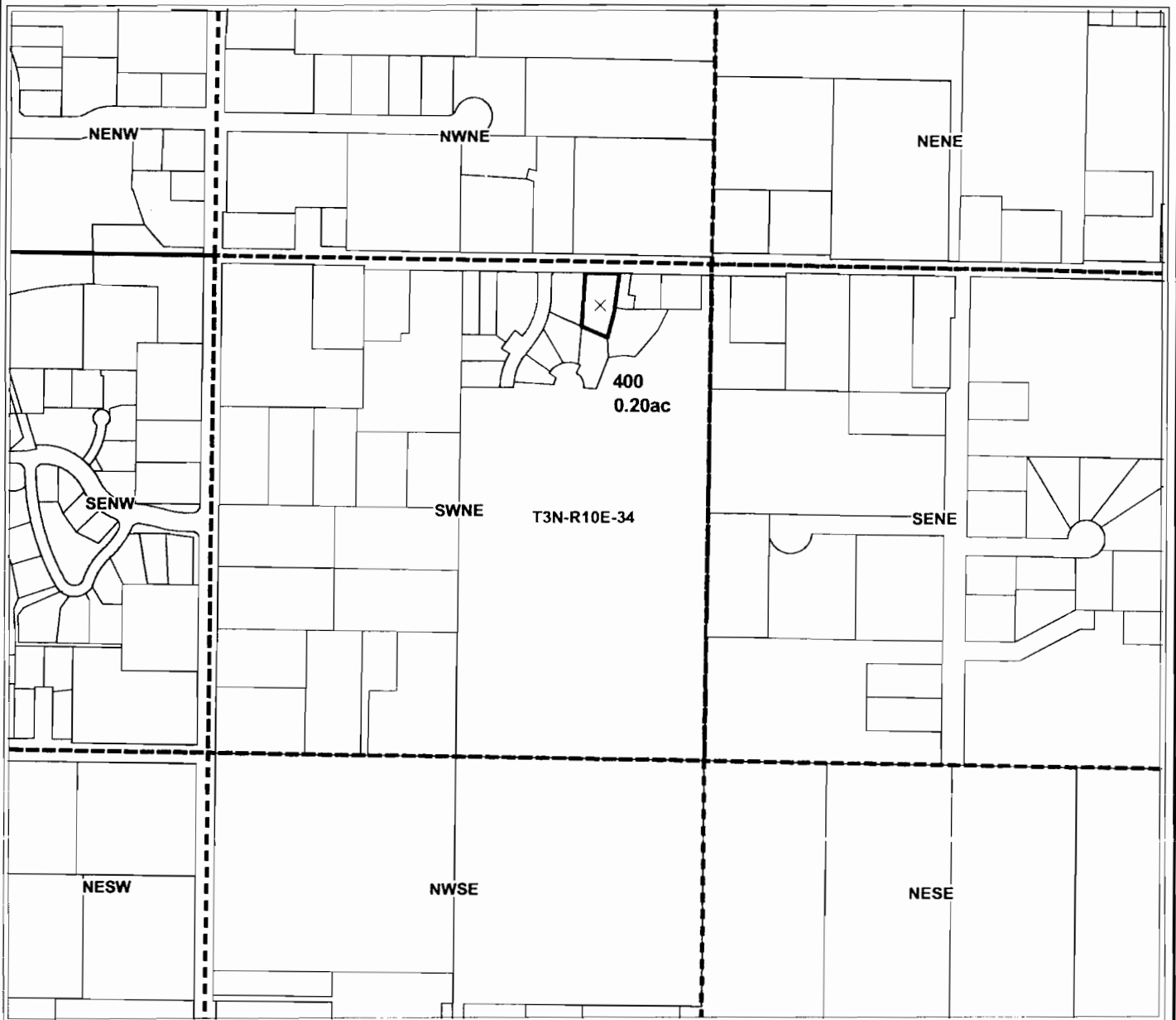
Date Created: July 20, 2004



1 inch equals 400 feet

APPLICATION FOR WATER RIGHT TRANSFER

T3N. R10 SECTION 34



APPLICATION FOR DISTRICT PERMANENT WATER RIGHT TRANSFER
for
Barone
Tax Lot 400 - 0.20 Acres



Geo-Spatial Solutions, Inc.

www.geospatialsolutions.com

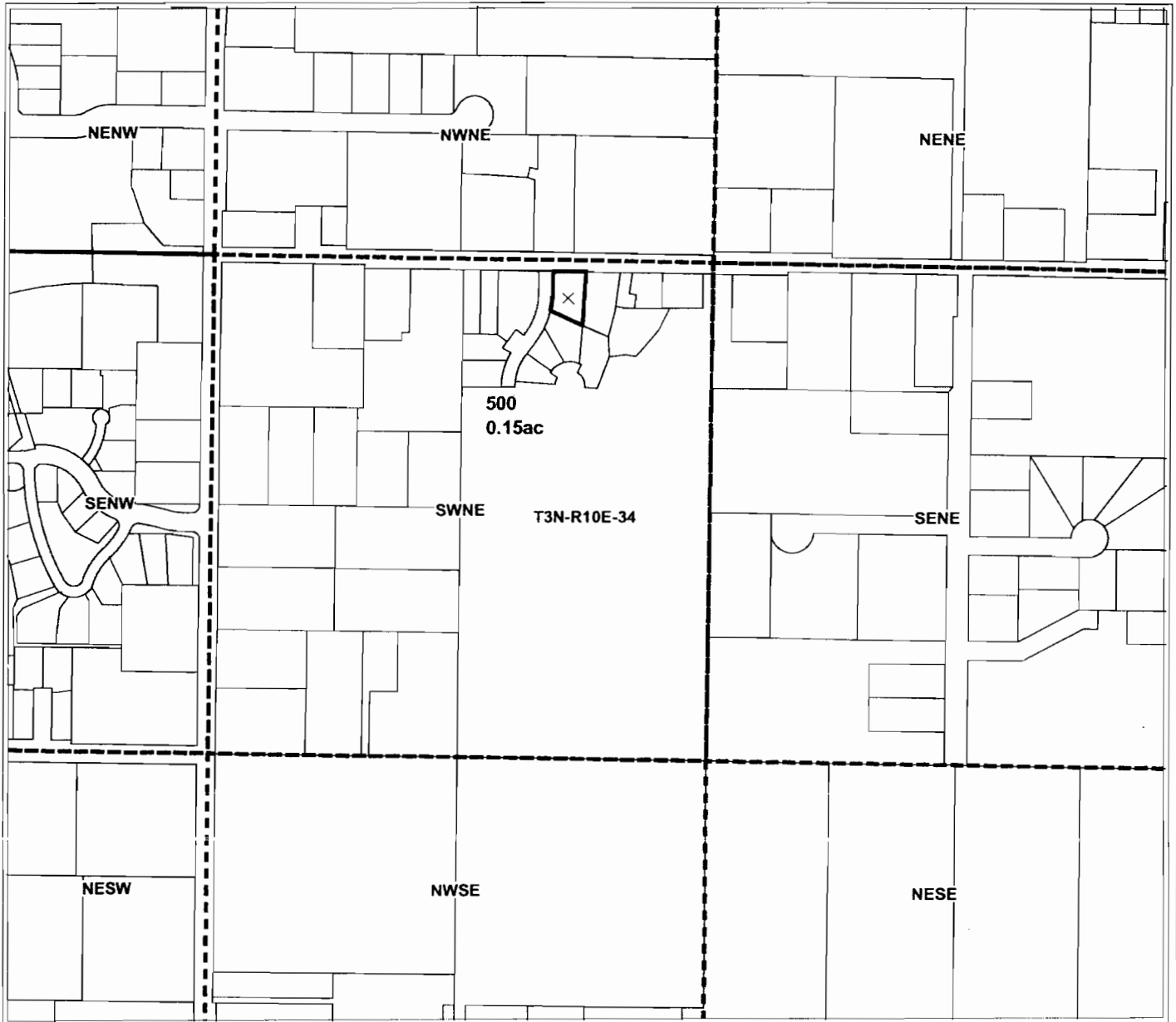
Date Created: July 20, 2004



1 inch equals 400 feet

APPLICATION FOR WATER RIGHT TRANSFER

T3N. R10 SECTION 34



APPLICATION FOR DISTRICT PERMANENT WATER RIGHT TRANSFER
for
Barone
Tax Lot 500 - 0.15 Acres



Geo-Spatial Solutions, Inc.
www.geospatialsolutions.com

Date Created: July 20, 2004

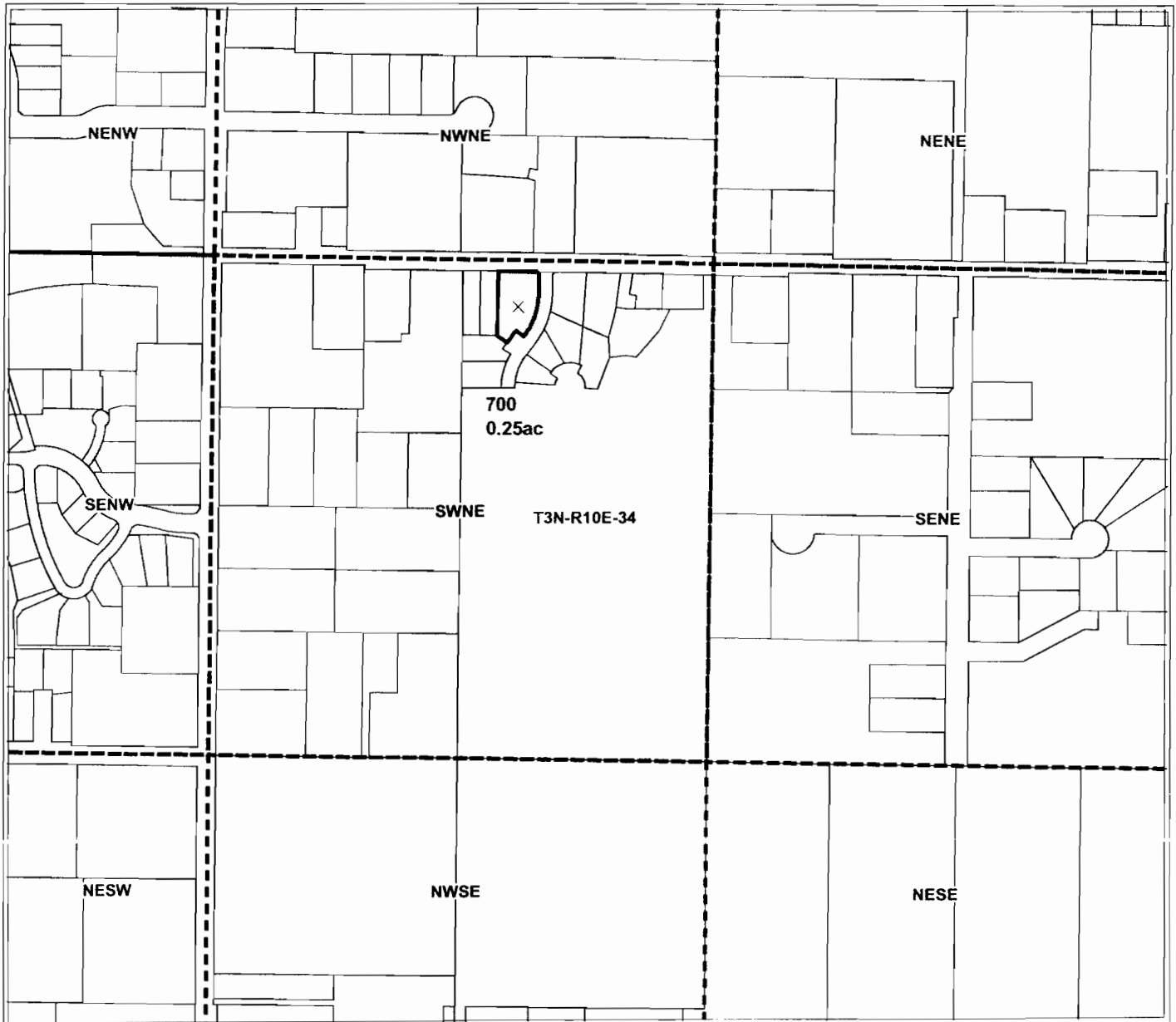


1 inch equals 400 feet

✓

APPLICATION FOR WATER RIGHT TRANSFER

T3N. R10 SECTION 34



APPLICATION FOR DISTRICT PERMANENT WATER RIGHT TRANSFER
for
Barone
Tax Lot 700 - 0.25 Acres



Geo-Spatial Solutions, Inc.

www.geospatialsolutions.com

Date Created: July 20, 2004

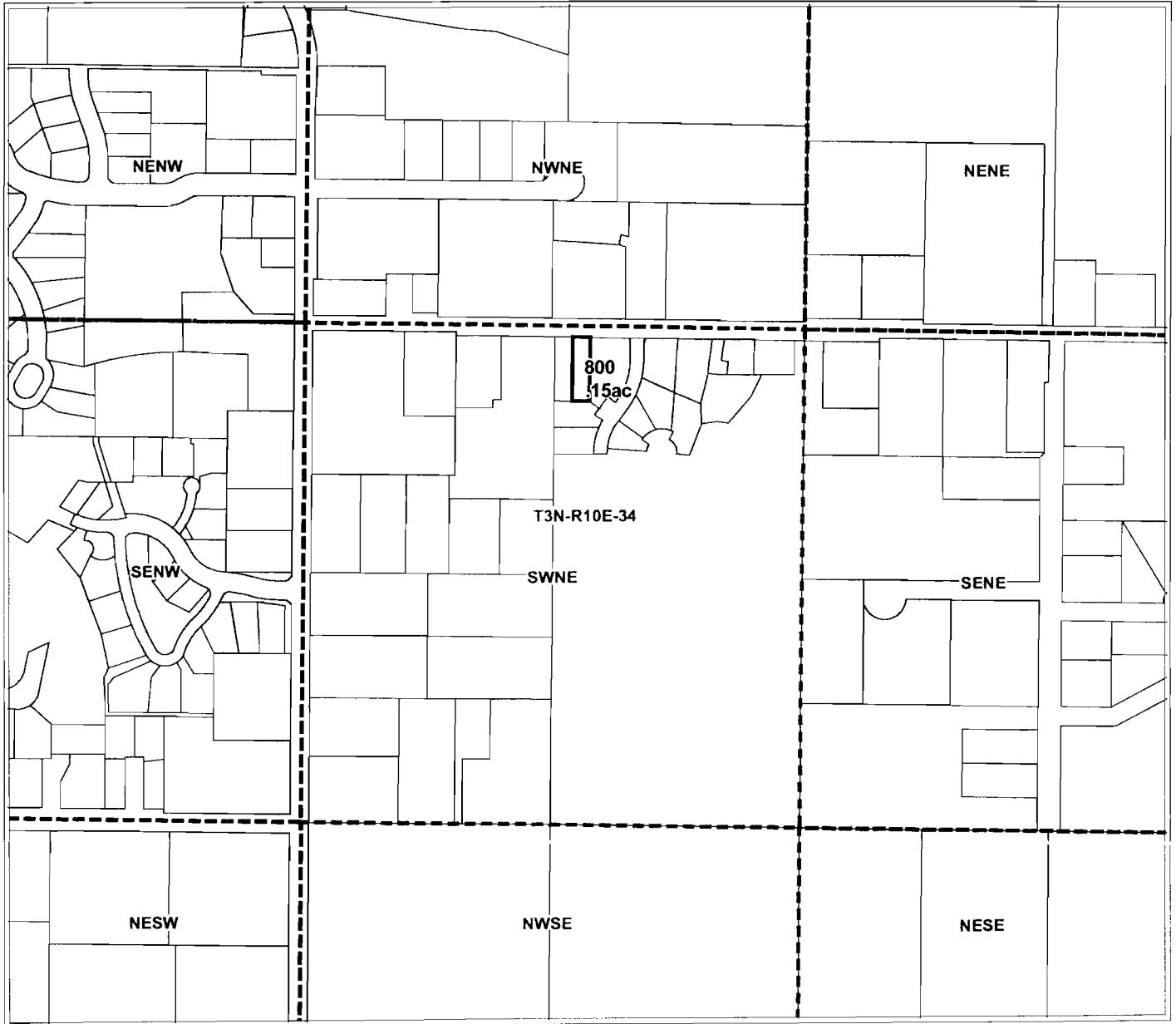


1 inch equals 400 feet

✓

APPLICATION FOR WATER RIGHT TRANSFER

T3N. R10 SECTION 34



APPLICATION FOR DISTRICT PERMANENT WATER RIGHT TRANSFER
for
Wasson
Tax Lot 800 - 0.15 Acres



Geo-Spatial Solutions, Inc.
www.geospatialolutions.com

Date Created: August 03, 2004



1 inch equals 400 feet

APPLICATION FOR WATER RIGHT TRANSFER

T3N. R10 SECTION 34



APPLICATION FOR DISTRICT PERMANENT WATER RIGHT TRANSFER
for
Wasson
Tax Lot 900 - 0.10 Acres



Geo-Spatial Solutions, Inc.
www.geospatialolutions.com

Date Created: August 03, 2004

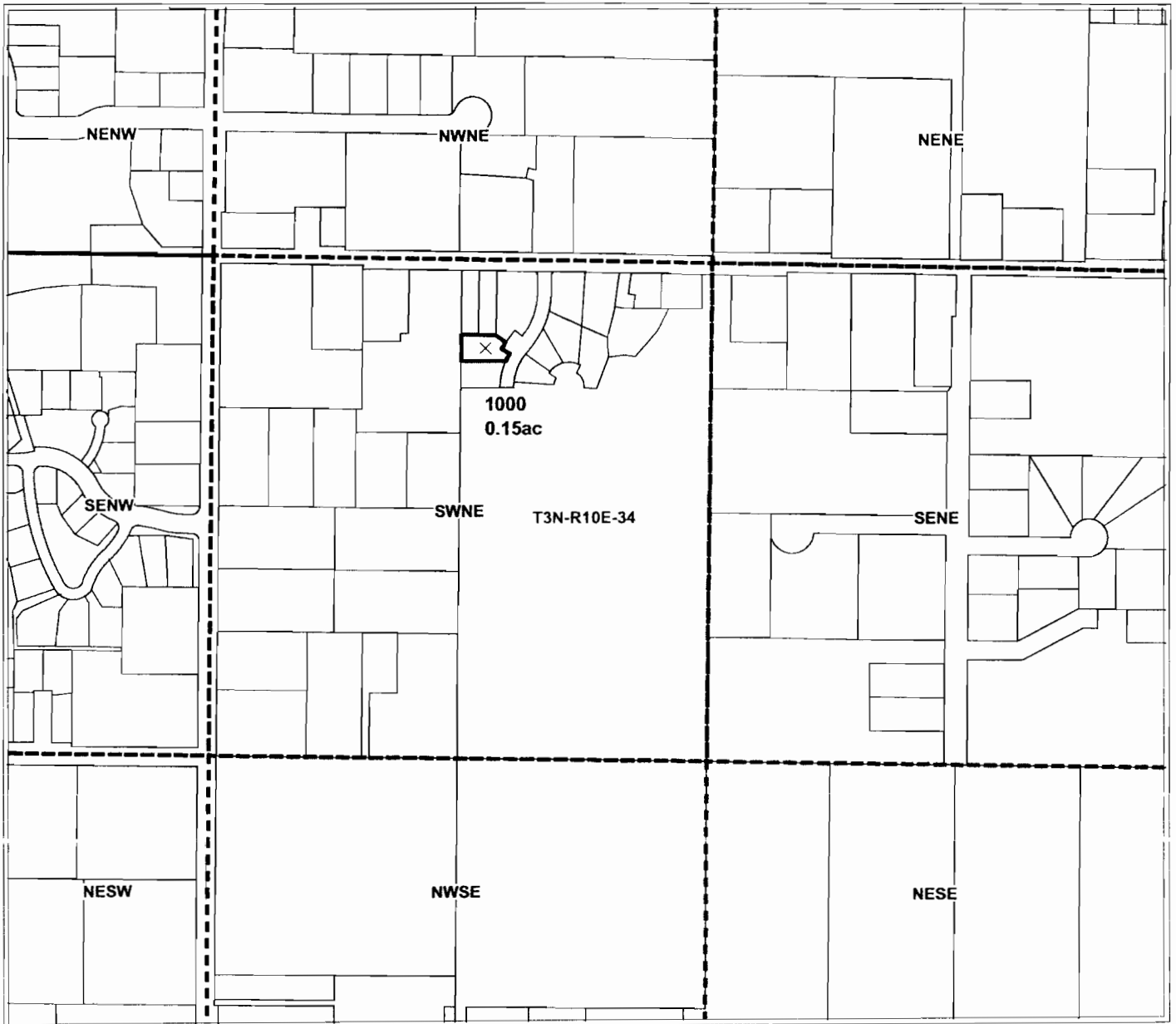


1 inch equals 400 feet

✓

APPLICATION FOR WATER RIGHT TRANSFER

T3N. R10 SECTION 34



APPLICATION FOR DISTRICT PERMANENT WATER RIGHT TRANSFER
for
Barone
Tax Lot 1000 - 0.15 Acres



Geo-Spatial Solutions, Inc.

www.geospatialsolutions.com

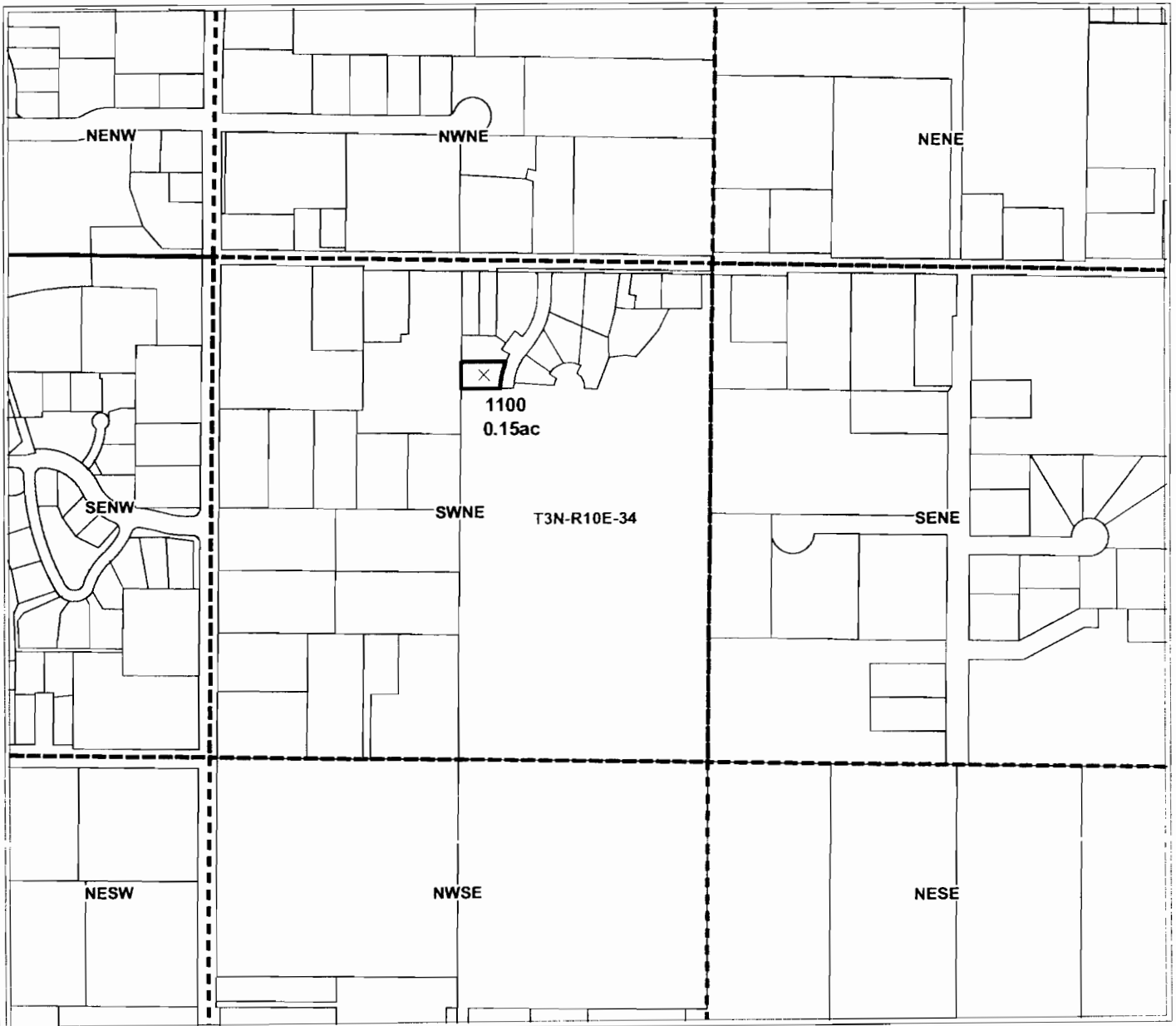
Date Created: July 20, 2004



1 inch equals 400 feet

APPLICATION FOR WATER RIGHT TRANSFER

T3N. R10 SECTION 34



APPLICATION FOR DISTRICT PERMANENT WATER RIGHT TRANSFER
for
Barone
Tax Lot 1100 - 0.15 Acres



Geo-Spatial Solutions, Inc.
www.geospatialolutions.com

Date Created: July 20, 2004

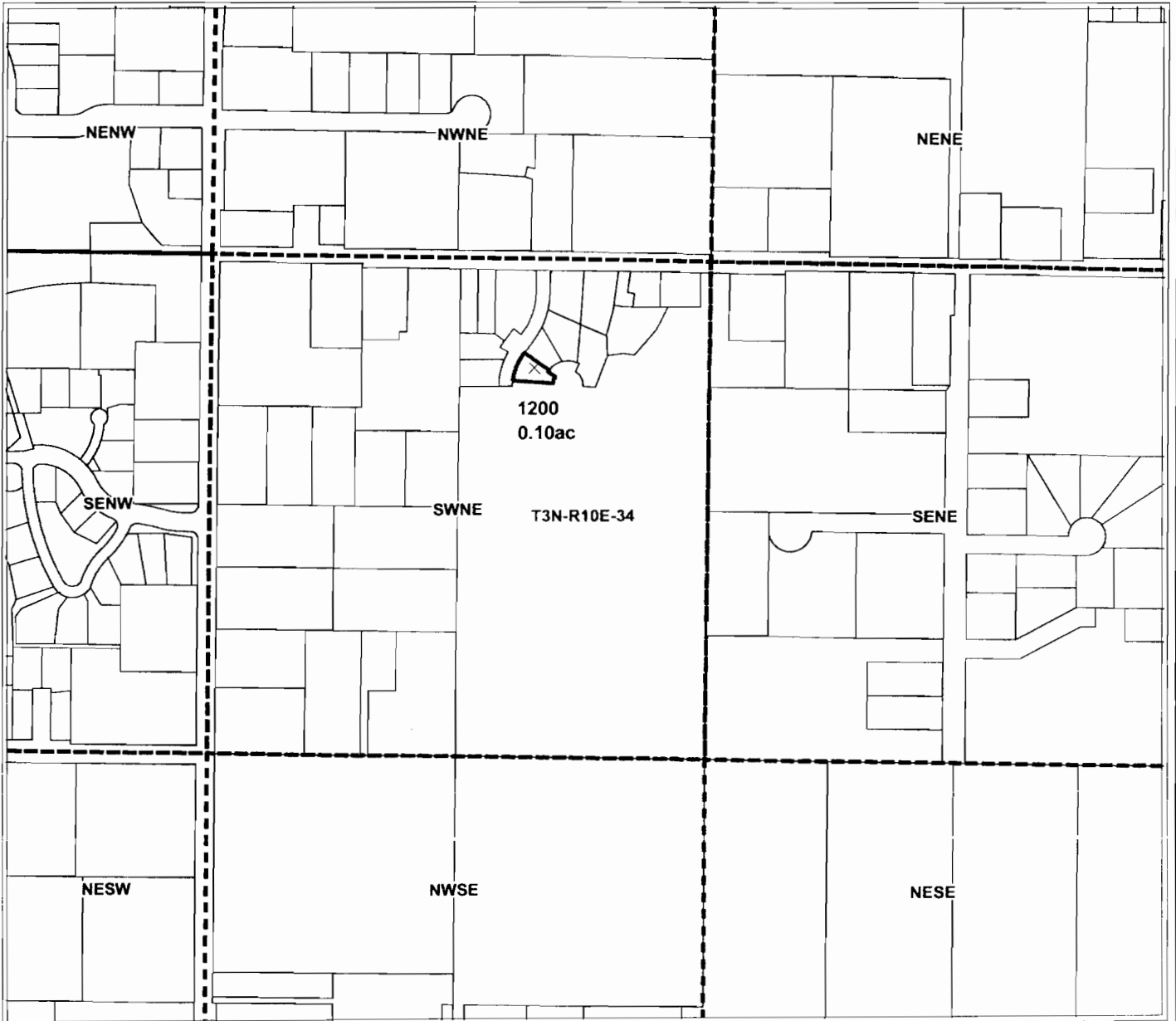


1 inch equals 400 feet

✓

APPLICATION FOR WATER RIGHT TRANSFER

T3N. R10 SECTION 34



APPLICATION FOR DISTRICT PERMANENT WATER RIGHT TRANSFER
for
Barone
Tax Lot 1200 - 0.10 Acres



Geo-Spatial Solutions, Inc.
www.geospatialolutions.com

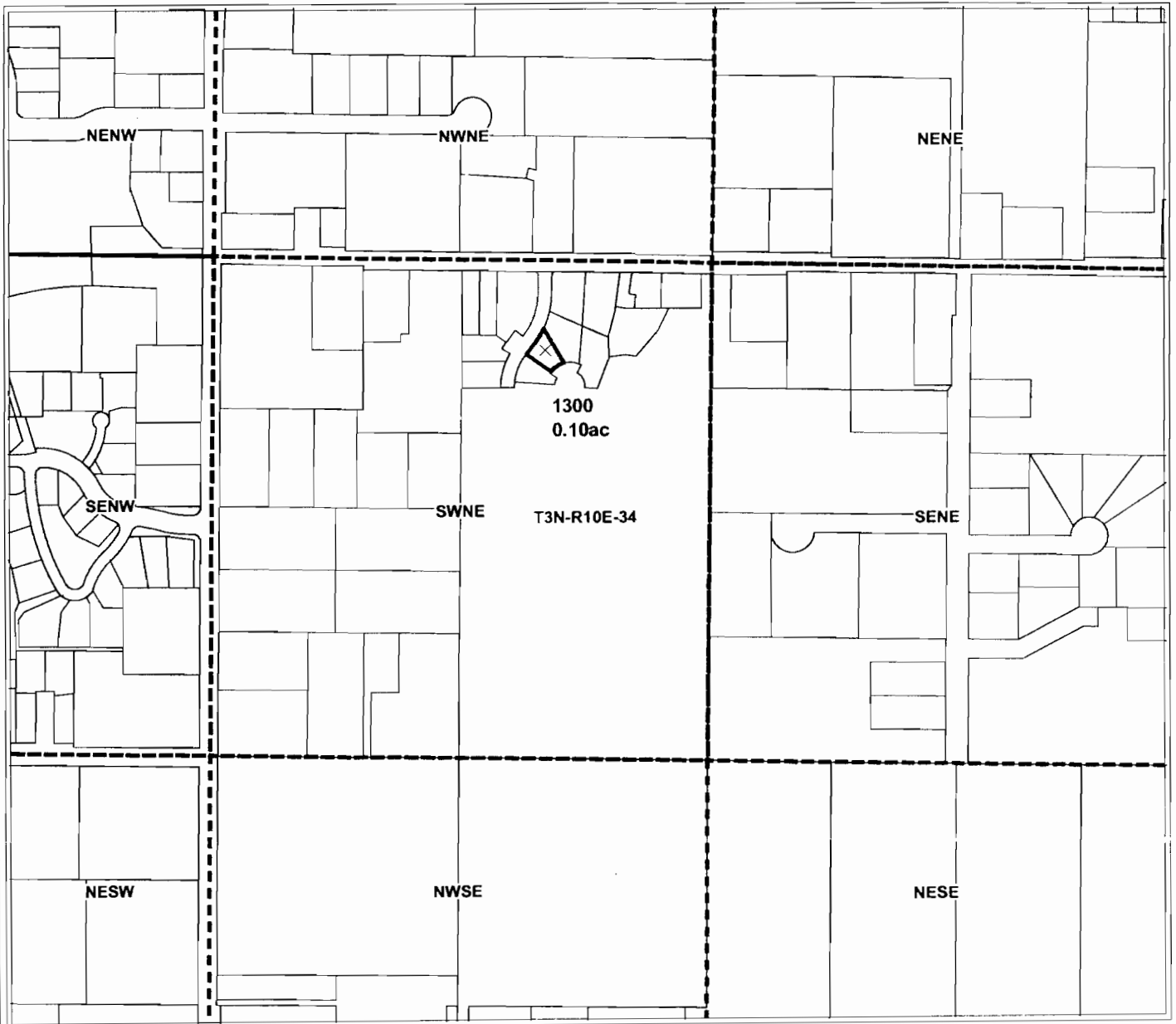
Date Created: July 20, 2004



1 inch equals 400 feet

APPLICATION FOR WATER RIGHT TRANSFER

T3N. R10 SECTION 34



APPLICATION FOR DISTRICT PERMANENT WATER RIGHT TRANSFER
for
Barone
Tax Lot 1300 - 0.10 Acres



Geo-Spatial Solutions, Inc.
www.geospatialolutions.com

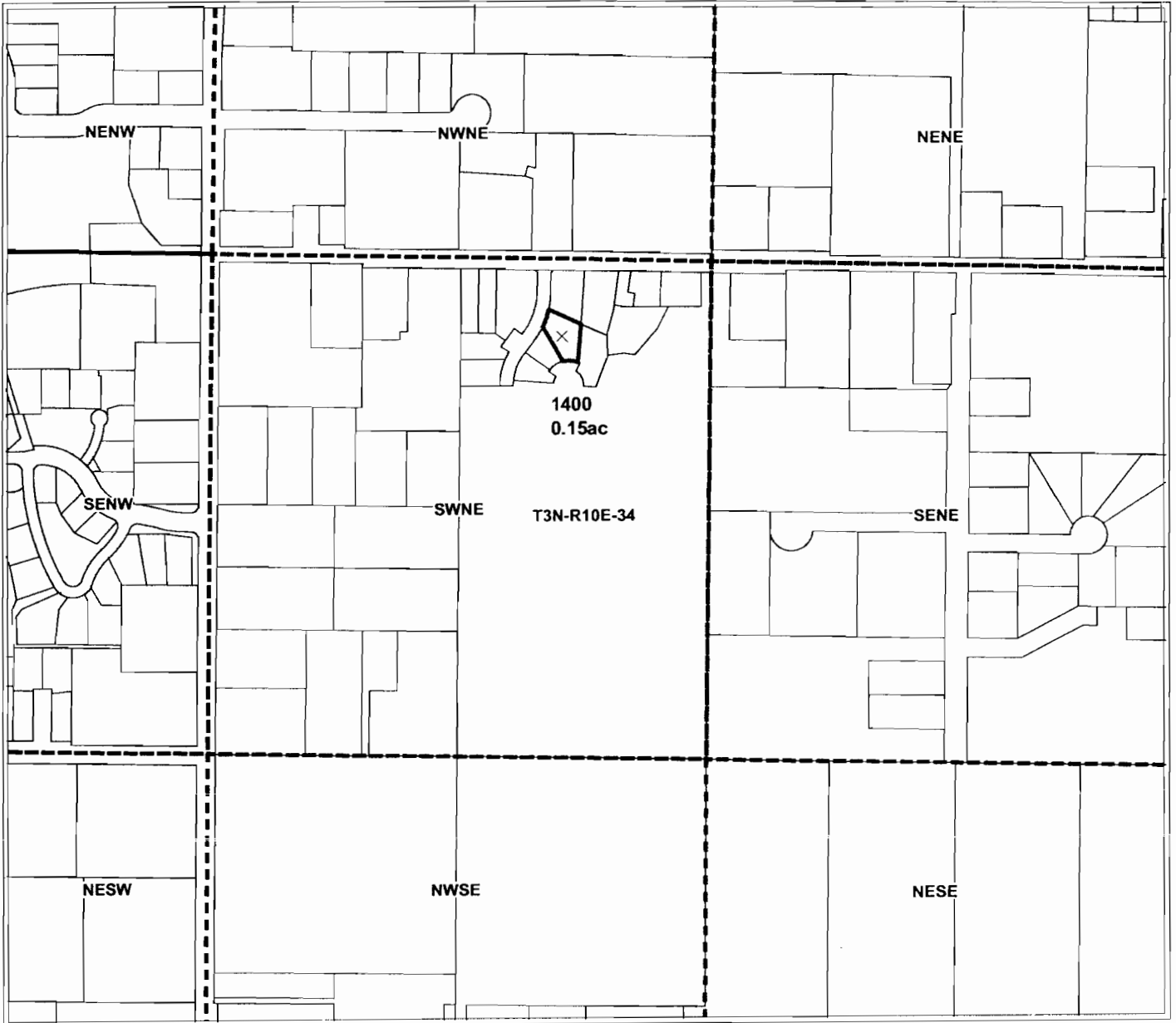
Date Created: July 20, 2004



1 inch equals 400 feet

APPLICATION FOR WATER RIGHT TRANSFER

T3N. R10 SECTION 34



APPLICATION FOR DISTRICT PERMANENT WATER RIGHT TRANSFER
for
Barone
Tax Lot 1400 - 0.15 Acres



Geo-Spatial Solutions, Inc.
www.geospatialsolutions.com

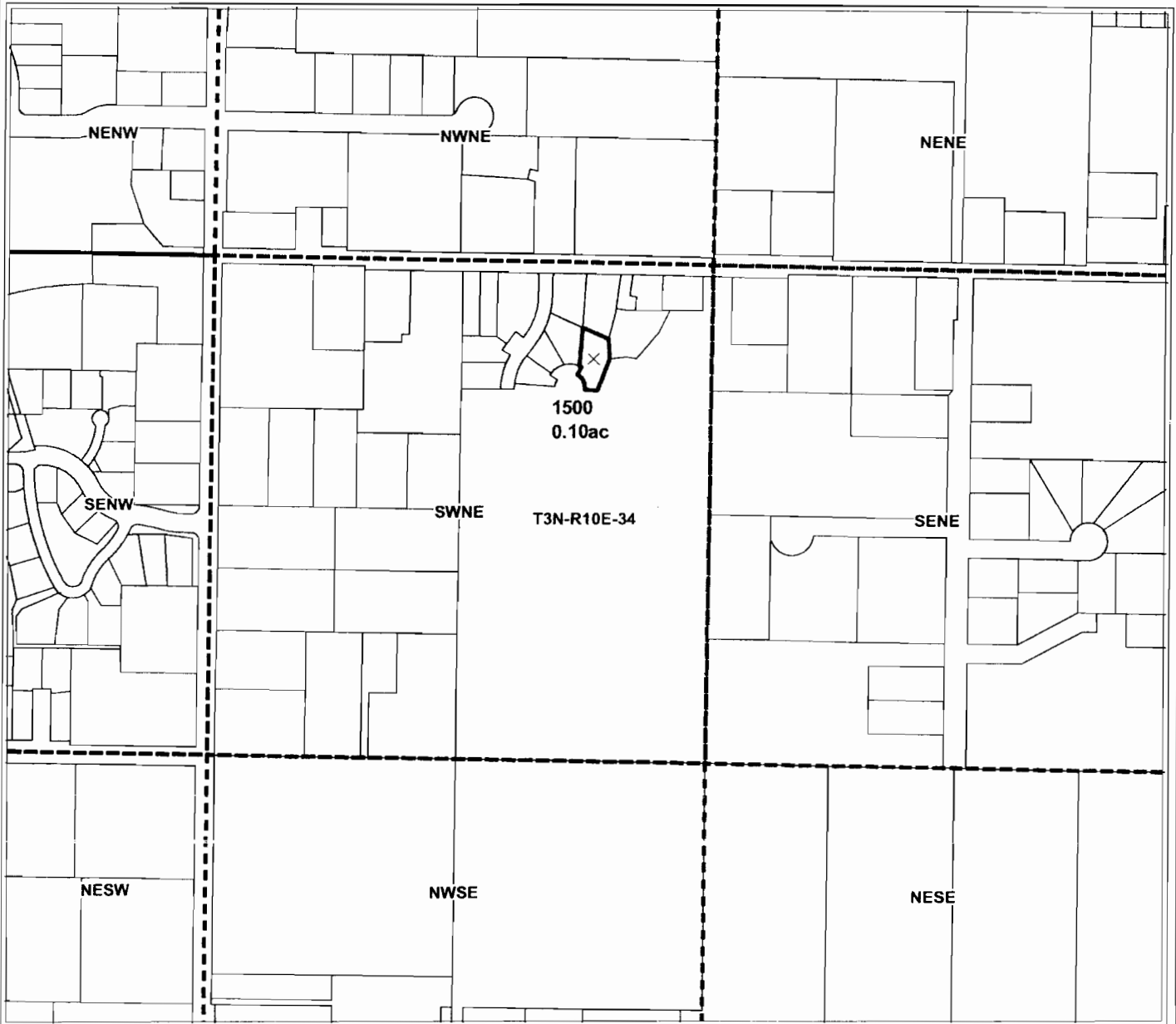
Date Created: July 20, 2004



1 inch equals 400 feet

APPLICATION FOR WATER RIGHT TRANSFER

T3N. R10 SECTION 34



APPLICATION FOR DISTRICT PERMANENT WATER RIGHT TRANSFER
for
Barone
Tax Lot 1500 - 0.10 Acres



Geo-Spatial Solutions, Inc.

www.geospatialolutions.com

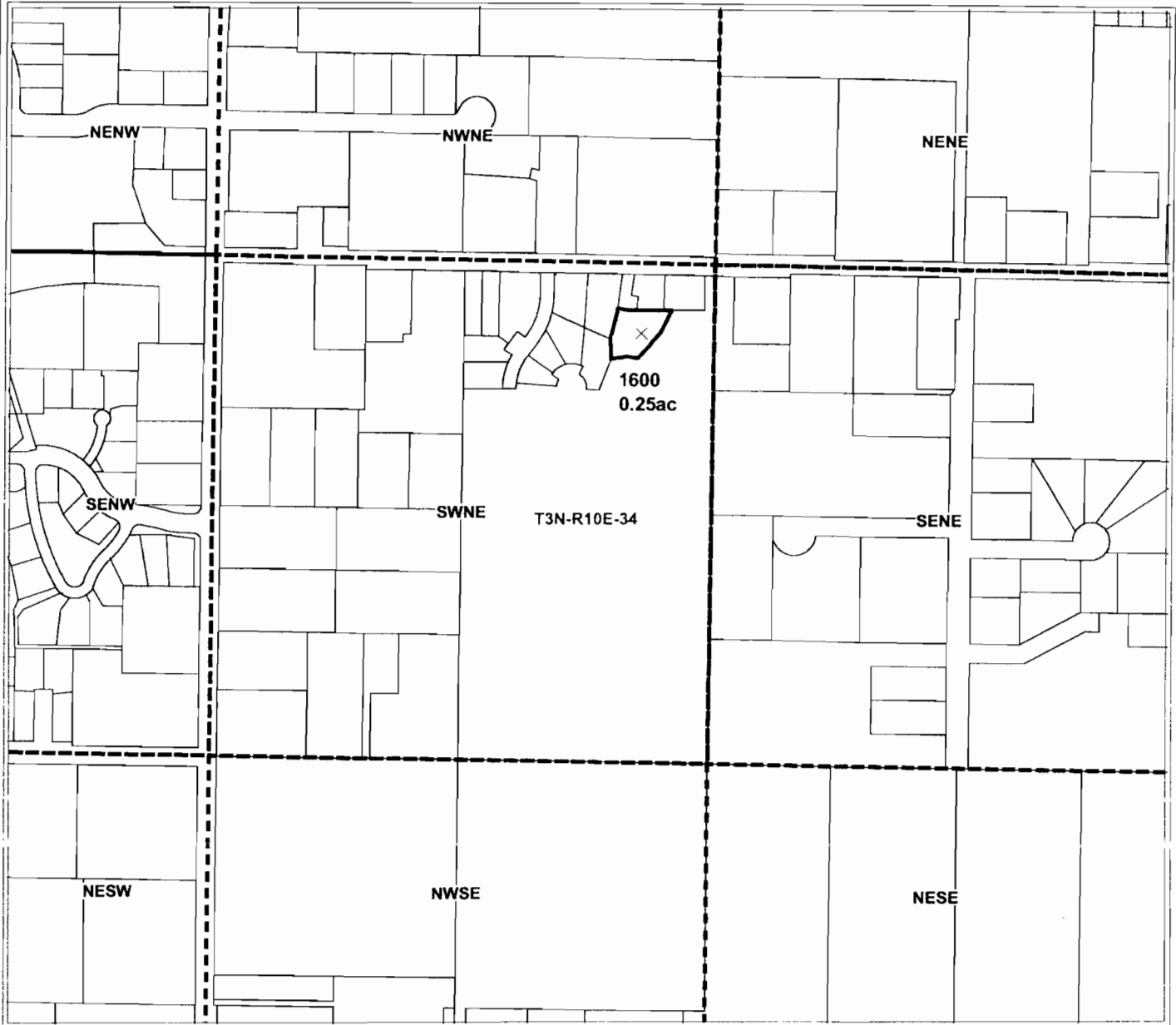
Date Created: July 20, 2004



1 inch equals 400 feet

APPLICATION FOR WATER RIGHT TRANSFER

T3N. R10 SECTION 34



APPLICATION FOR DISTRICT PERMANENT WATER RIGHT TRANSFER
for
Barone
Tax Lot 1600 - 0.25 Acres



Geo-Spatial Solutions, Inc.

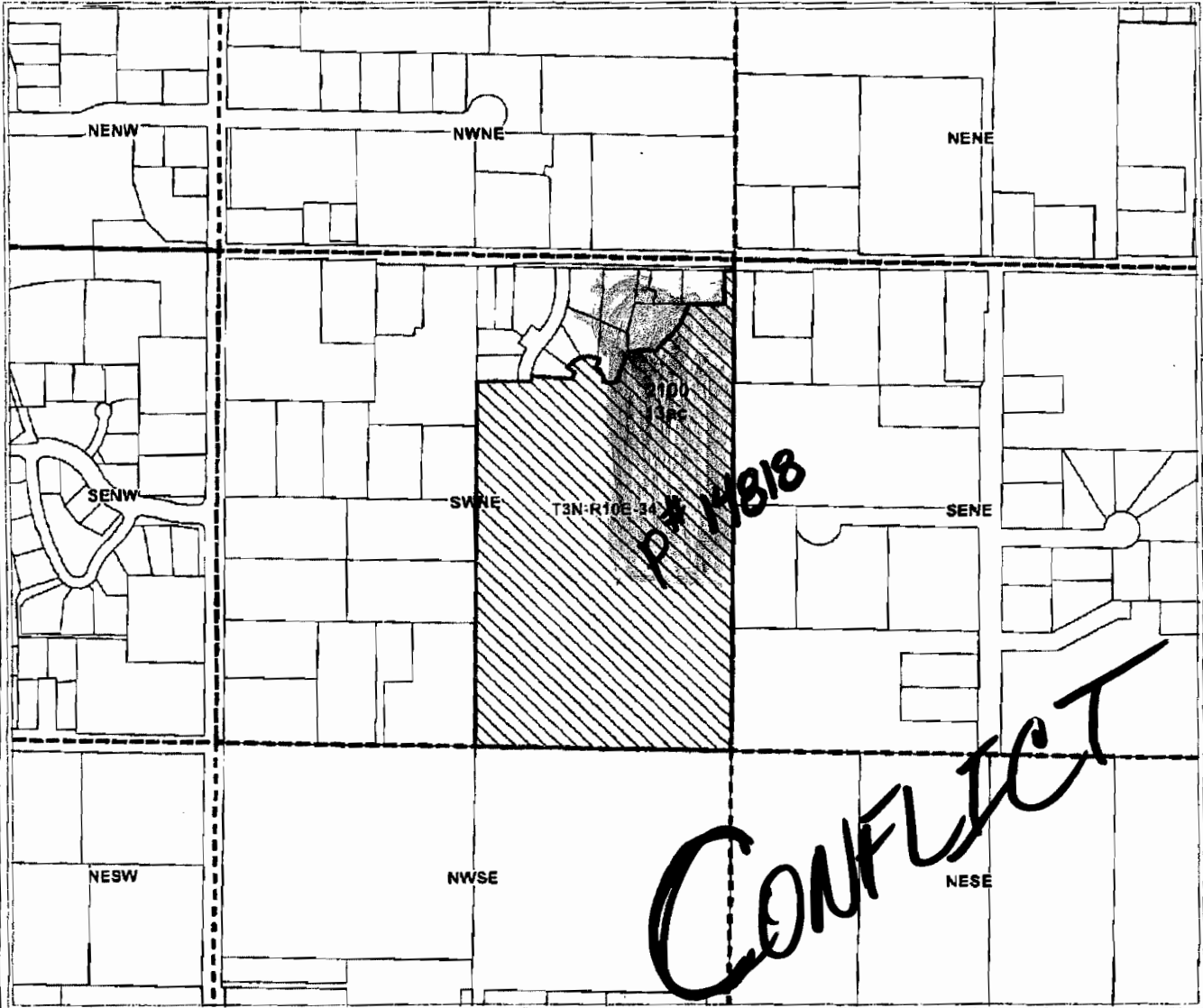
www.geospatialolutions.com

Date Created: July 20, 2004



1 inch equals 400 feet

APPLICATION FOR WATER RIGHT TRANSFER T3N. R10 SECTION 34



APPLICATION FOR DISTRICT PERMANENT WATER RIGHT TRANSFER
for
Barone
Tax Lot 2100 - 13 Acres
(Lot has been subdivided but GIS has not been updated by county)

T-9587



Geo-Spatial Solutions, Inc.

www.geospatialolutions.com

Date Created: July 20, 2004

1 inch equals 400 feet

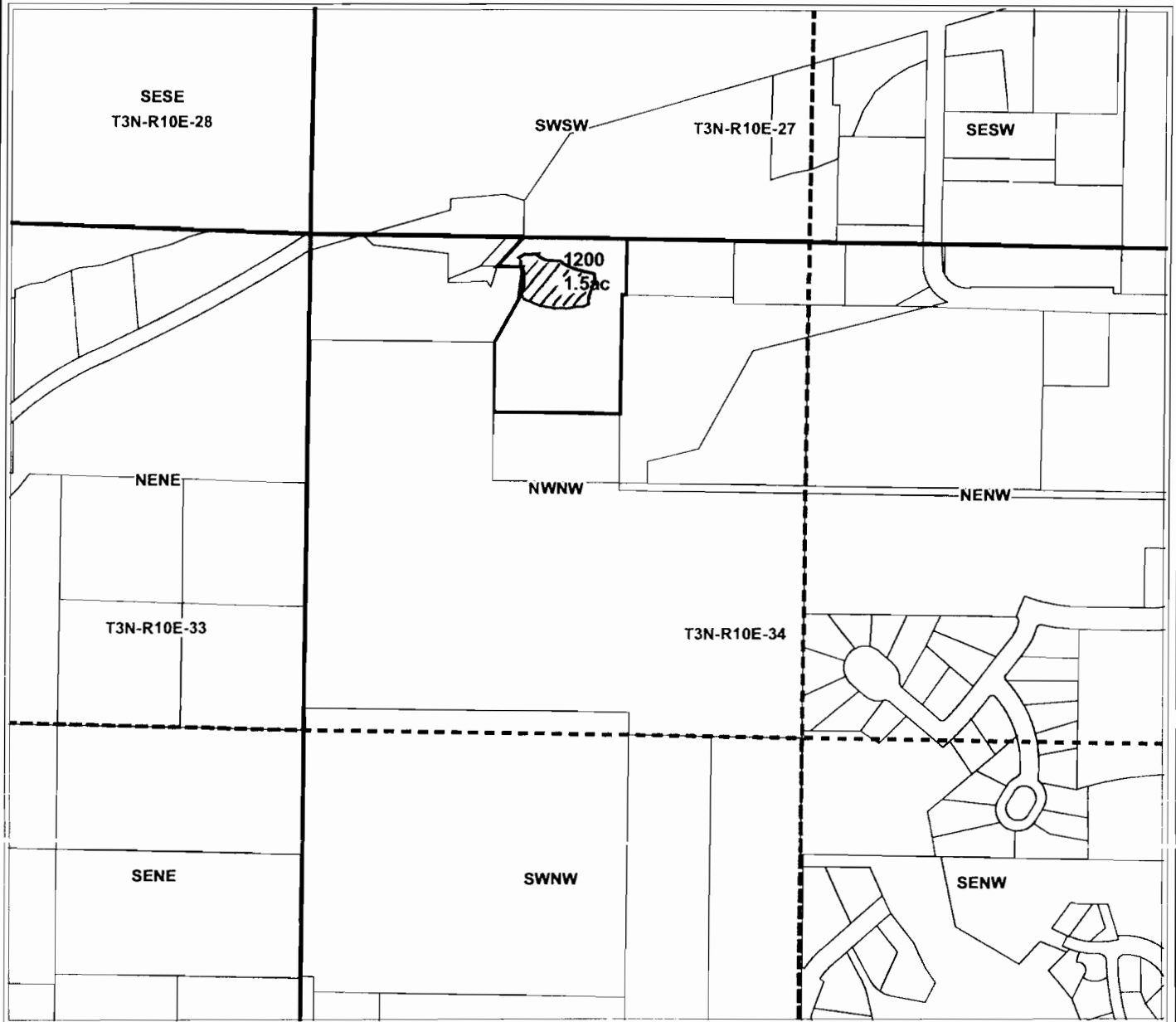


T- 8386 TRANSFERRED OFF 13.0 (DIST. RIGHT 74306)
(BRUCE McFARLANE)

APR. 24, 2000

APPLICATION FOR WATER RIGHT TRANSFER

T3N. R10 SECTION 34



APPLICATION FOR DISTRICT PERMANENT WATER RIGHT TRANSFER
for
Lozowski
Tax Lot 1200 - 1.5 Acres



Geo-Spatial Solutions, Inc.
www.geospatialolutions.com

Date Created: April 26, 2004



1 inch equals 400 feet

✓

APPLICATION FOR WATER RIGHT TRANSFER

T3N. R10 SECTION 34



APPLICATION FOR DISTRICT PERMANENT WATER RIGHT TRANSFER

for

Flerchinger

Lot 1511 - 1.8 Acres

(Lot 1501 has been subdivided)



Geo-Spatial Solutions, Inc.

www.geospatialsolutions.com

Date Created: August 03, 2004

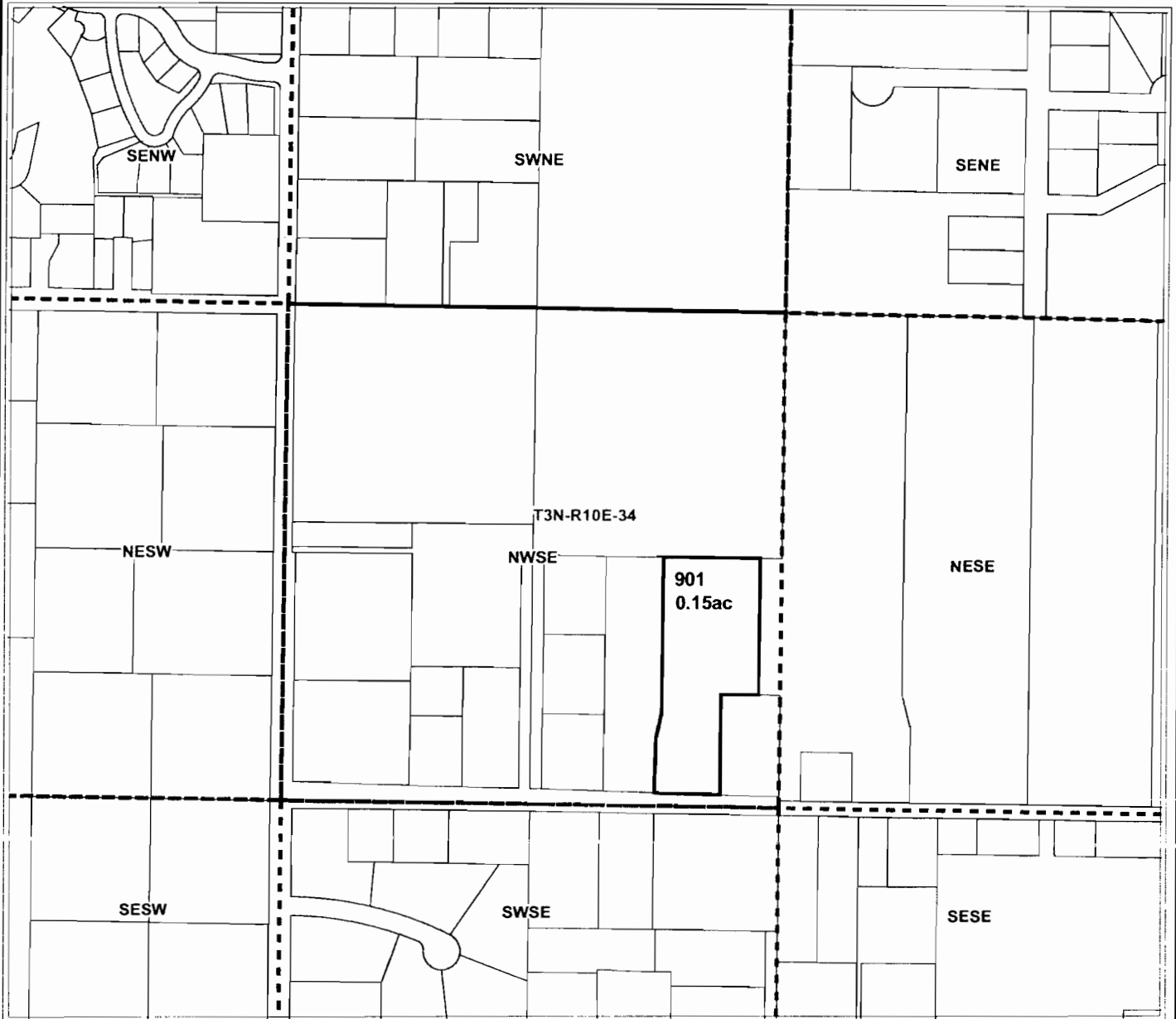


1 inch equals 400 feet

✓

APPLICATION FOR WATER RIGHT TRANSFER

T3N. R10 SECTION 34



APPLICATION FOR DISTRICT PERMANENT WATER RIGHT TRANSFER

for

Beaman

Tax Lot 901 - 0.15 Acres

(Lot has been Consolidated)



Geo-Spatial Solutions, Inc.

www.geospatialsolutions.com

Date Created: August 03, 2004



1 inch equals 400 feet

APPLICATION FOR WATER RIGHT TRANSFER

T3N. R10 SECTION 34



APPLICATION FOR DISTRICT PERMANENT WATER RIGHT TRANSFER
for
Guthrie
Tax Lot 1900 - 0.30 Acres



Geo-Spatial Solutions, Inc.
www.geospatialolutions.com

Date Created: August 02, 2004

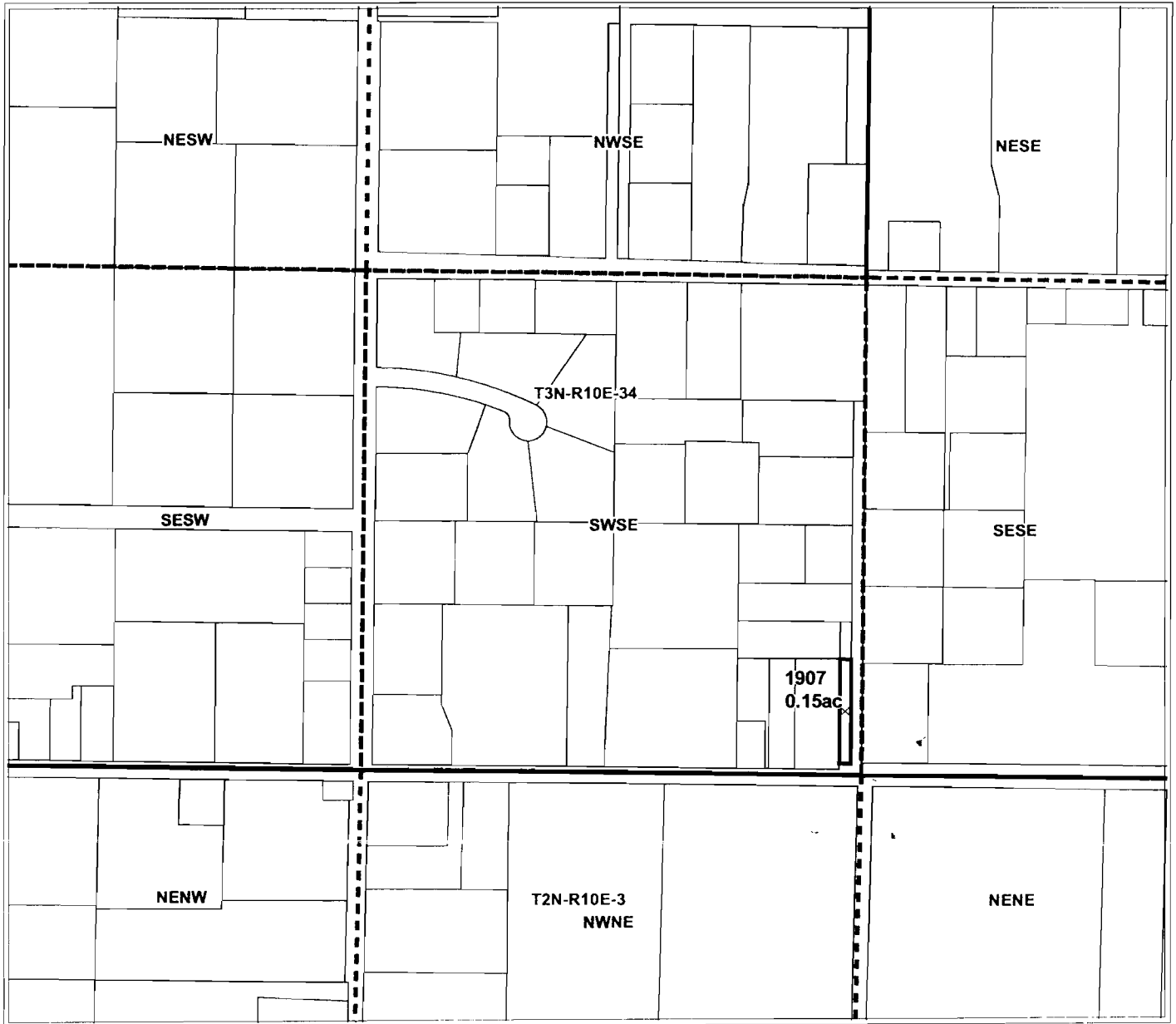


1 inch equals 400 feet



APPLICATION FOR WATER RIGHT TRANSFER

T3N. R10 SECTION 34



APPLICATION FOR DISTRICT PERMANENT WATER RIGHT TRANSFER

for
Guthrie
Tax Lot 1907 - 0.15 Acres



Geo-Spatial Solutions, Inc.
www.geospatialolutions.com

Date Created: August 02, 2004



1 inch equals 400 feet

✓

APPLICATION FOR WATER RIGHT TRANSFER

T3N. R10 SECTION 34



APPLICATION FOR DISTRICT PERMANENT WATER RIGHT TRANSFER

for
Henderson
Tax Lot 2000 - 0.75 Acres



Geo-Spatial Solutions, Inc.

www.geospatialsolutions.com

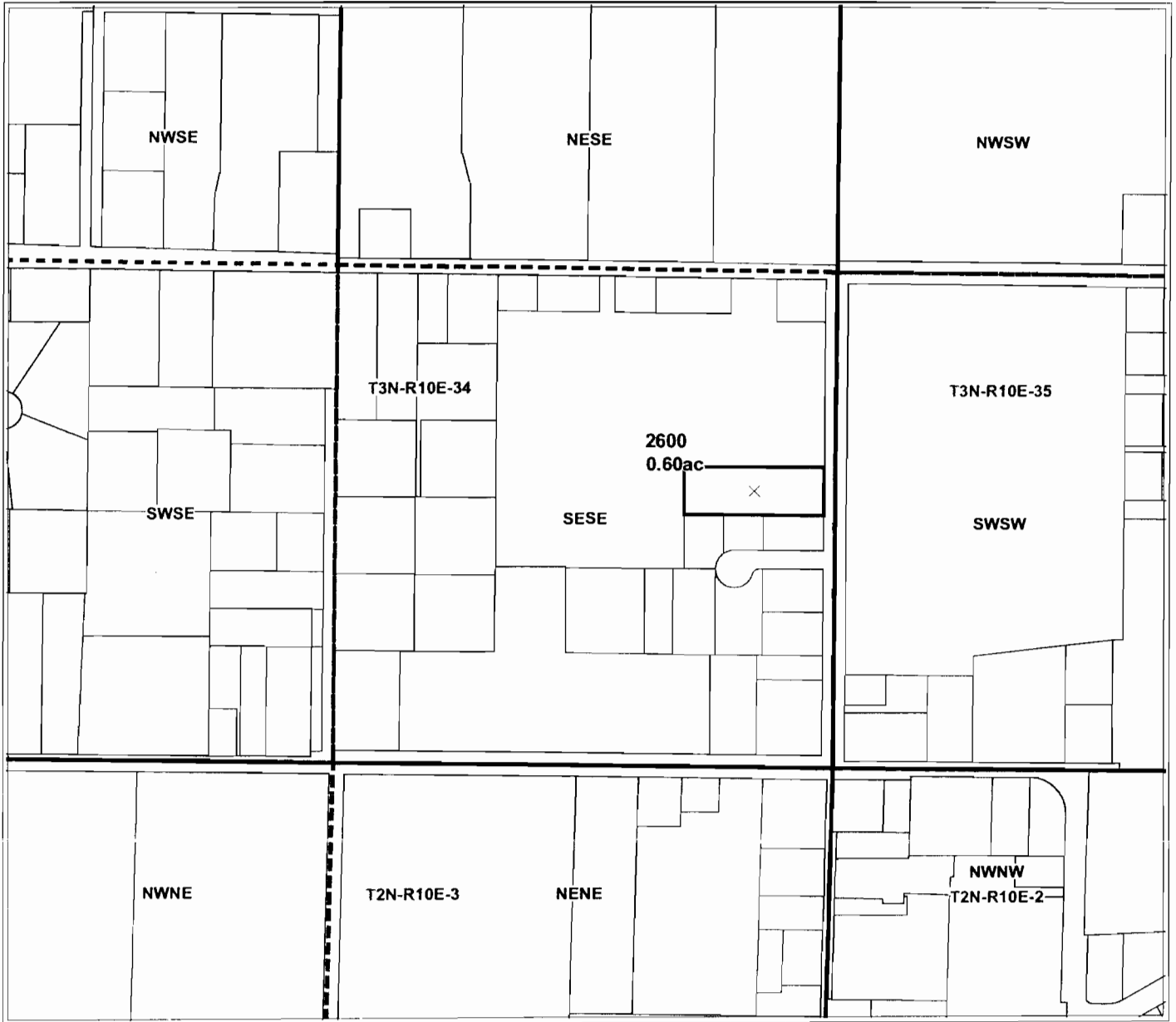
Date Created: August 02, 2004



1 inch equals 400 feet

APPLICATION FOR WATER RIGHT TRANSFER

T3N. R10 SECTION 34



APPLICATION FOR DISTRICT PERMANENT WATER RIGHT TRANSFER

for
Smith
Tax Lot 2600 - 0.60 Acres



Geo-Spatial Solutions, Inc.
www.geospatialsolutions.com

Date Created: August 02, 2004



1 inch equals 400 feet

APPLICATION FOR WATER RIGHT TRANSFER

T3N. R10 SECTION 35



APPLICATION FOR DISTRICT PERMANENT WATER RIGHT TRANSFER
for
Henderson
Lot 100 - 0.2 Acres
(Lot was previously listed as 93)



Geo-Spatial Solutions, Inc.

www.geospatialolutions.com

Date Created: August 03, 2004

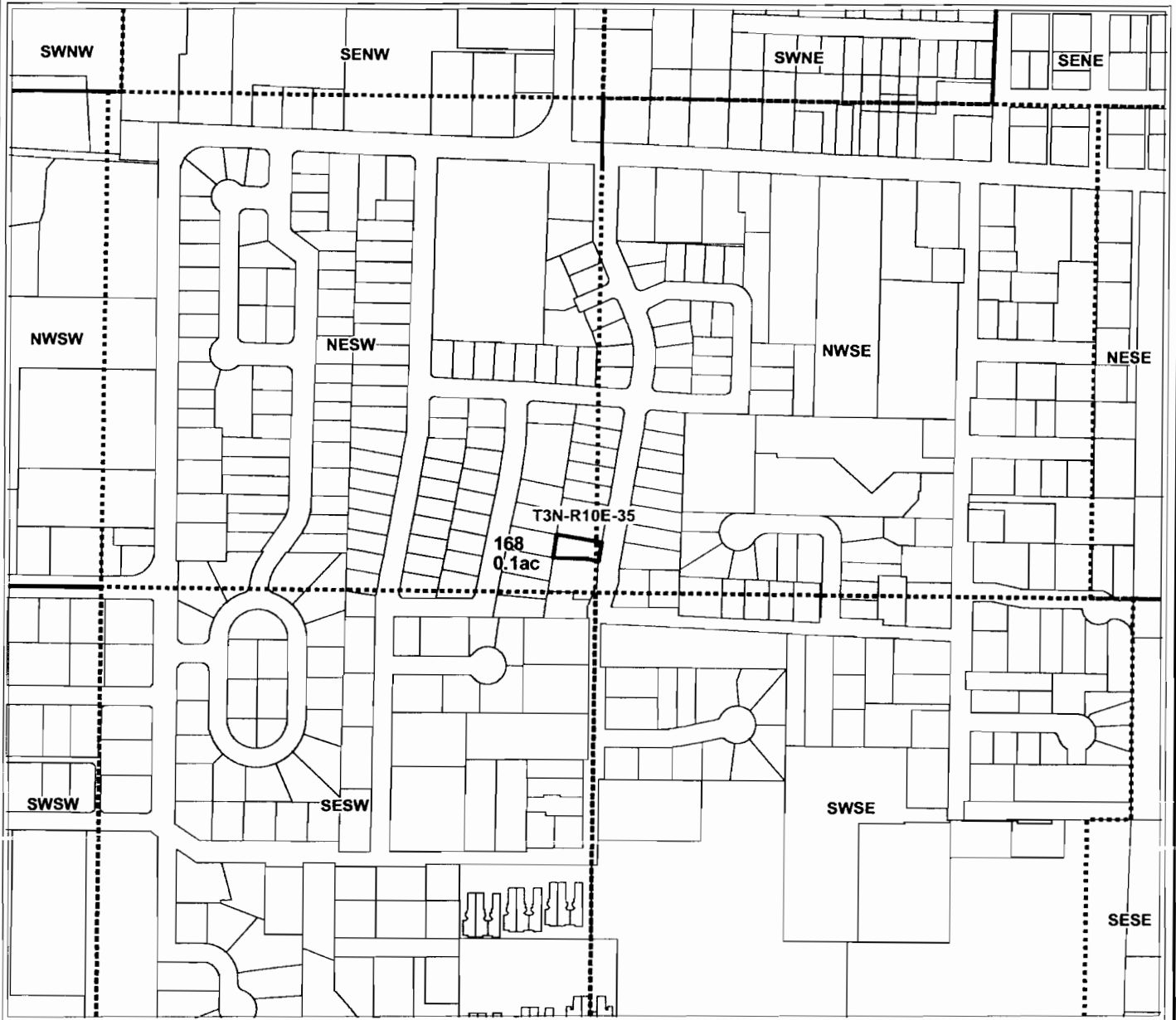


1 inch equals 400 feet



APPLICATION FOR WATER RIGHT TRANSFER

T3N. R10 SECTION 35



APPLICATION FOR DISTRICT PERMANENT WATER RIGHT TRANSFER
for
Marquez
Lot 168 - 0.1 Acres
(Lot was previously listed as 94)



Geo-Spatial Solutions, Inc.

www.geospatialsolutions.com

Date Created: August 03, 2004

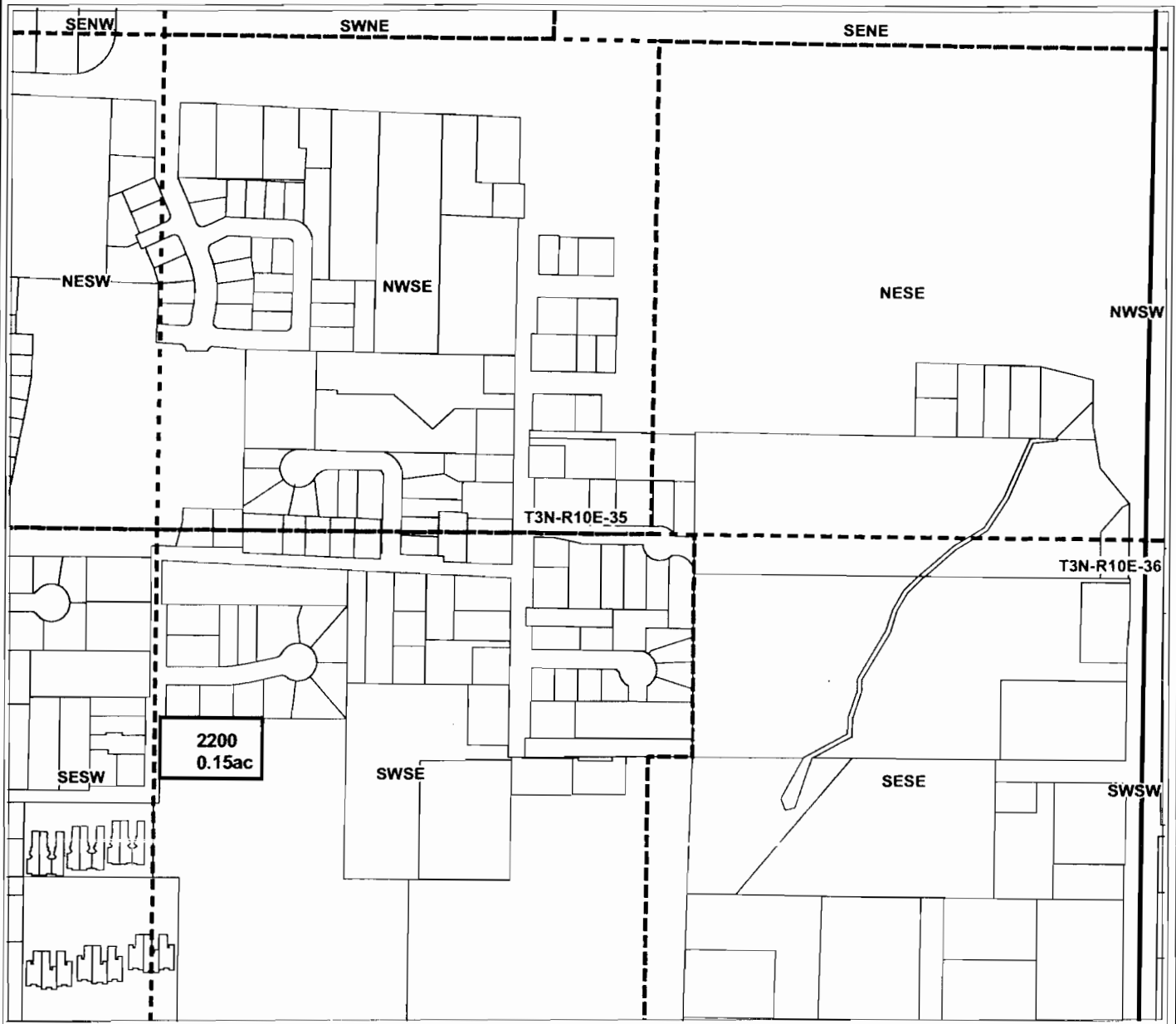


1 inch equals 400 feet



APPLICATION FOR WATER RIGHT TRANSFER

T3N. R10 SECTION 35



APPLICATION FOR DISTRICT PERMANENT WATER RIGHT TRANSFER
for
Marshall
Tax Lot 2200 - 0.15 Acres



Geo-Spatial Solutions, Inc.

www.geospatialolutions.com

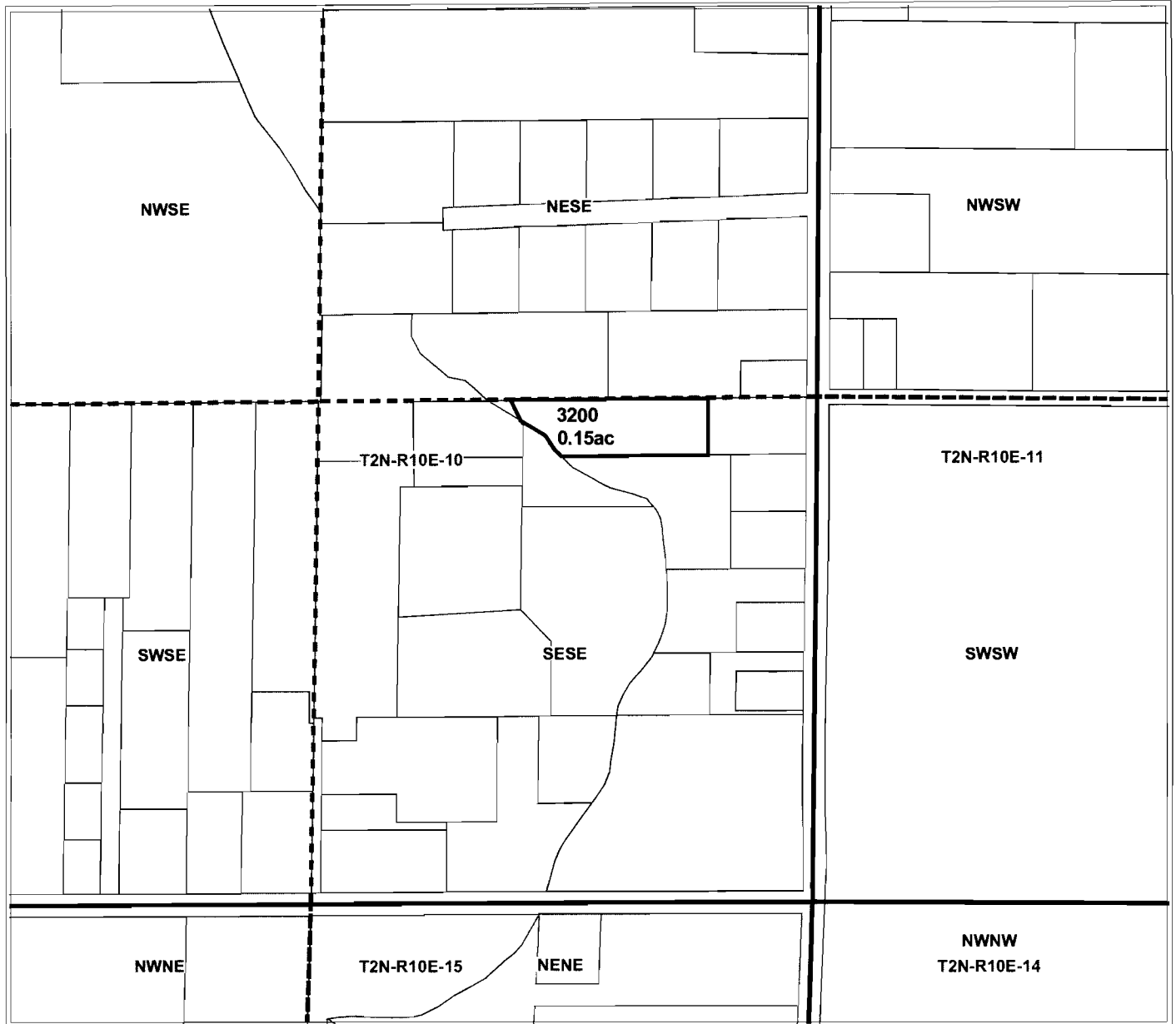
Date Created: July 15, 2004



1 inch equals 400 feet

APPLICATION FOR WATER RIGHT TRANSFER

T2N. R10 SECTION 10



APPLICATION FOR DISTRICT PERMANENT WATER RIGHT TRANSFER

for
Nash
Tax Lot 3200 - 0.15 Acres



Geo-Spatial Solutions, Inc.
www.geospatialsolutions.com

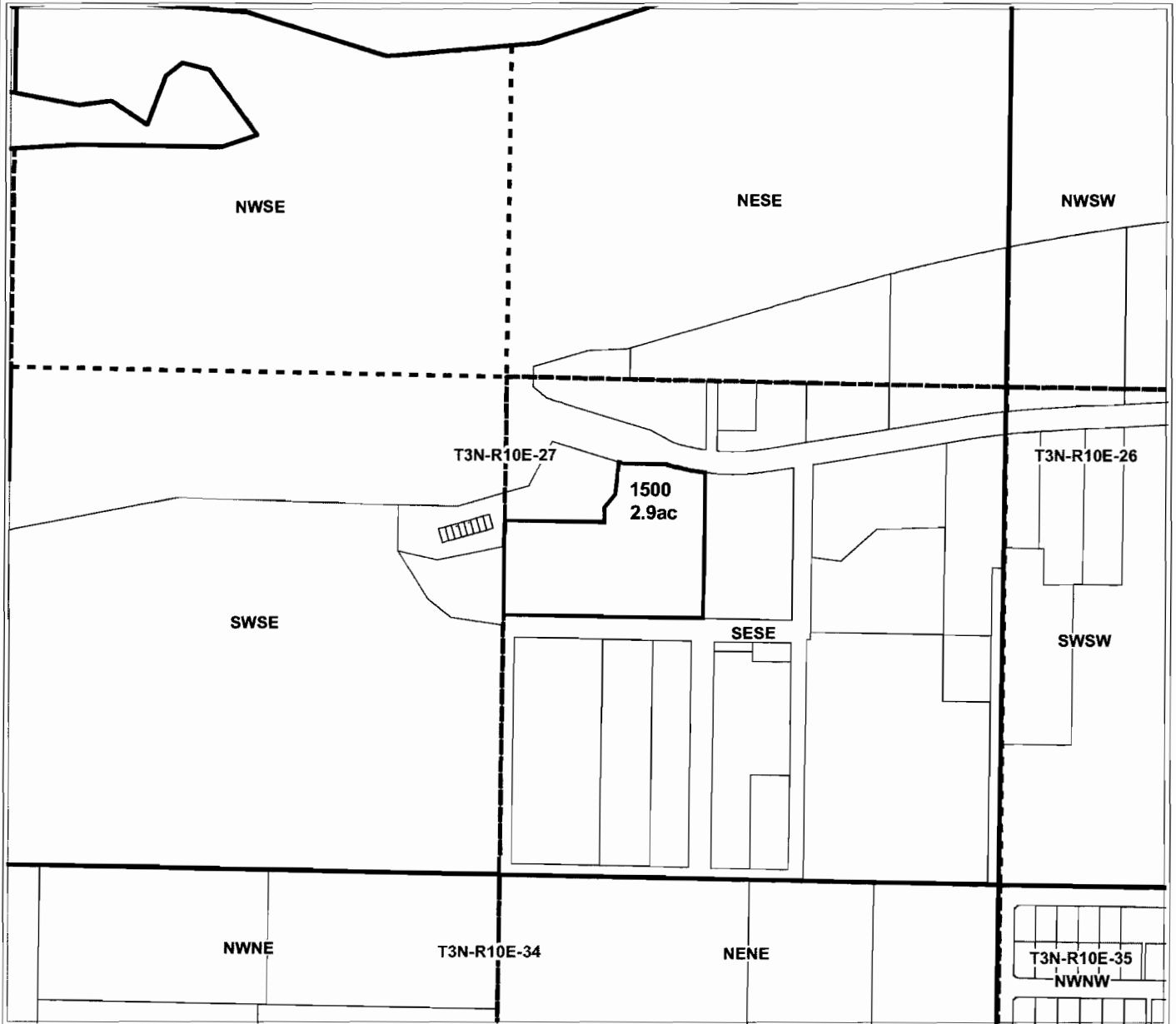
Date Created: April 27, 2004



1 inch equals 400 feet

APPLICATION FOR WATER RIGHT TRANSFER

T3N. R10 SECTION 27



APPLICATION FOR DISTRICT PERMANENT WATER RIGHT TRANSFER

for

Taylor (Larson)

Tax Lot 1500 & 1400 - 2.9 Acres

(Lot has been consolidated)

(.7ac - orig. lot 1400)

(2.2ac - orig. lot 1500)



Geo-Spatial Solutions, Inc.

www.geospatialsolutions.com

Date Created: April 27, 2004



1 inch equals 400 feet

APPLICATION FOR WATER RIGHT TRANSFER

T3N. R10 SECTION 33



APPLICATION FOR DISTRICT PERMANENT WATER RIGHT TRANSFER
for
Paulus
Tax Lot 2300 - 0.5 Acres



Geo-Spatial Solutions, Inc.
www.geospatialsolutions.com

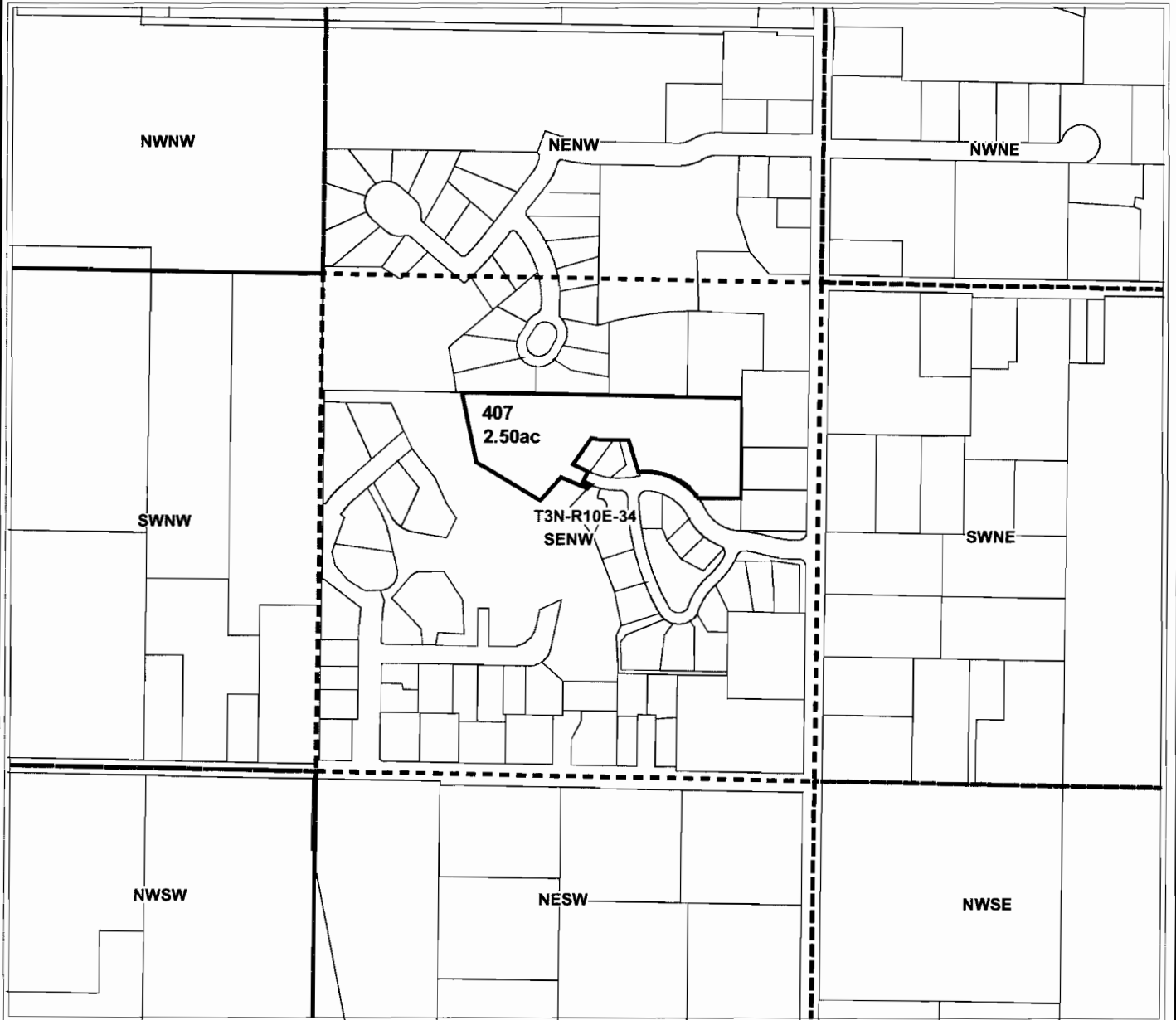
Date Created: April 27, 2004



1 inch equals 400 feet

APPLICATION FOR WATER RIGHT TRANSFER

T3N. R10 SECTION 34



APPLICATION FOR DISTRICT PERMANENT WATER RIGHT TRANSFER
for
Hunter
Tax Lot 407 - 2.50 Acres



Geo-Spatial Solutions, Inc.
www.geospatialsolutions.com

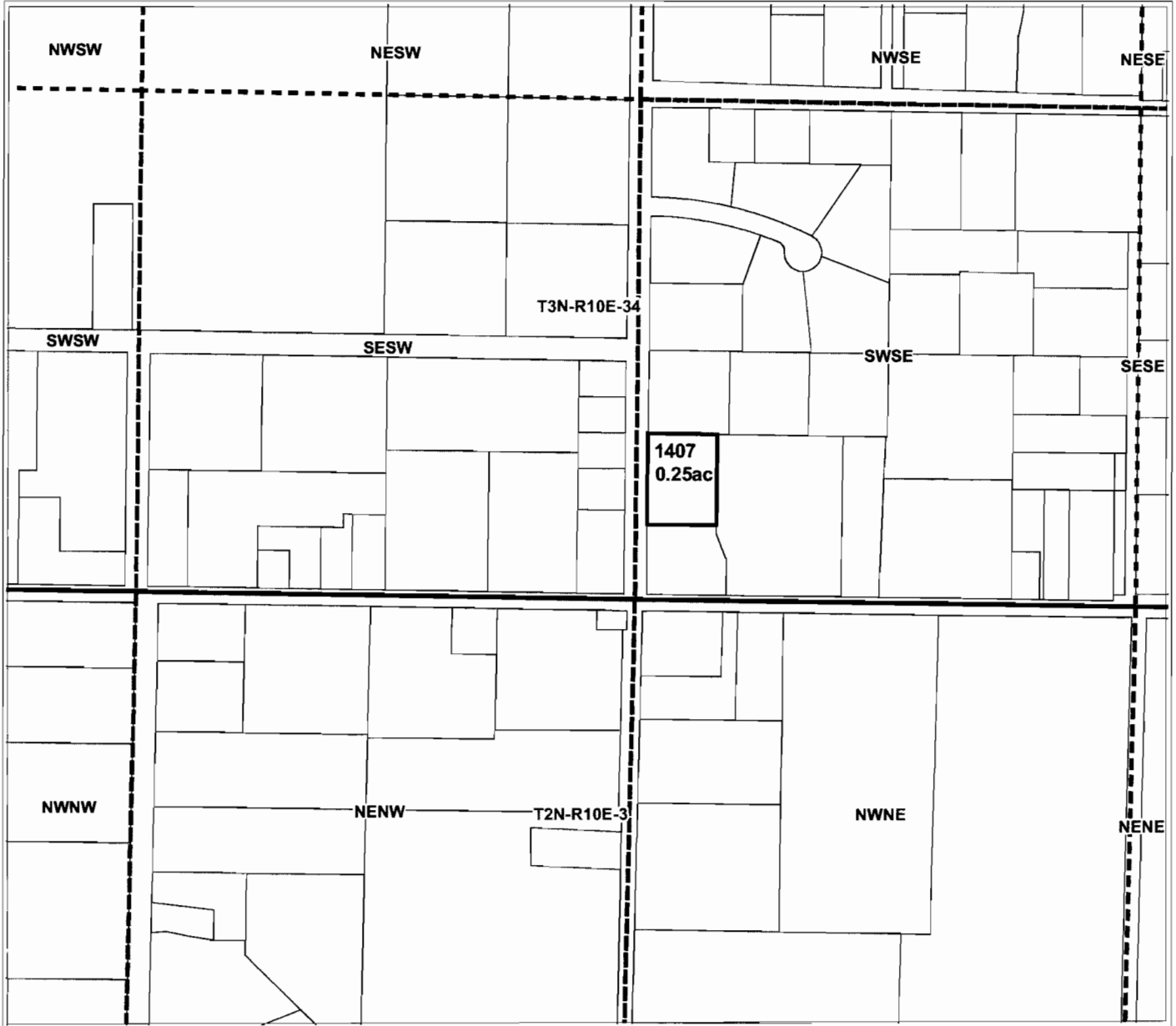
Date Created: April 27, 2004



1 inch equals 400 feet

APPLICATION FOR WATER RIGHT TRANSFER

T3N. R10 SECTION 34



APPLICATION FOR DISTRICT PERMANENT WATER RIGHT TRANSFER
for
Sanders
Tax Lot 1407 - 0.25 Acres



Geo-Spatial Solutions, Inc.
www.geospatialolutions.com

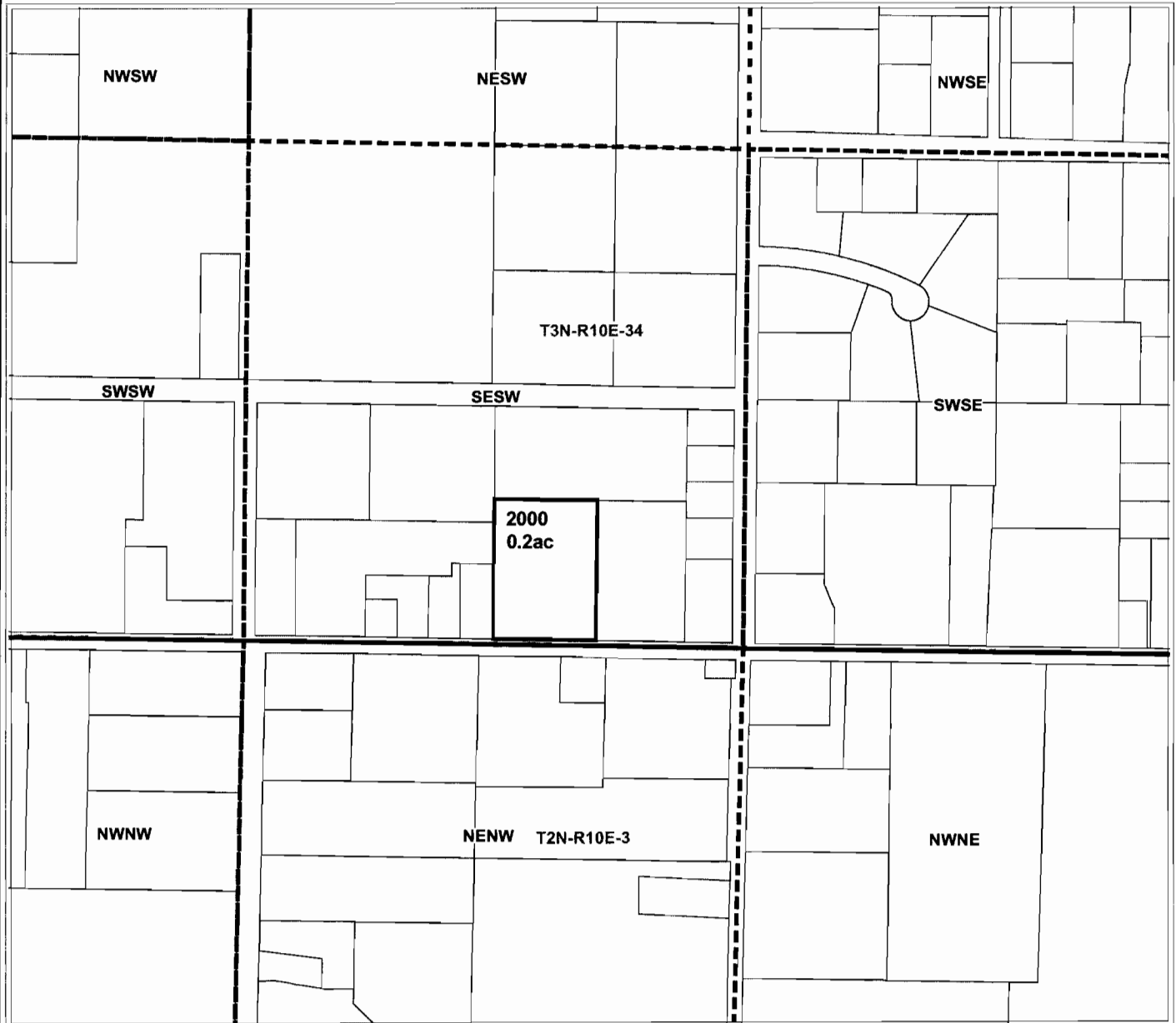
Date Created: April 27, 2004



1 inch equals 400 feet

APPLICATION FOR WATER RIGHT TRANSFER

T3N. R10 SECTION 34



APPLICATION FOR DISTRICT PERMANENT WATER RIGHT TRANSFER
for
Young
Tax Lot 2000 - 0.2 Acres



Geo-Spatial Solutions, Inc.
www.geospatialolutions.com

Date Created: April 27, 2004



1 inch equals 400 feet

APPLICATION FOR WATER RIGHT TRANSFER

T3N. R10 SECTION 34



APPLICATION FOR DISTRICT PERMANENT WATER RIGHT TRANSFER
for
Bovee
Tax Lot 2202 - 0.15 Acres



Geo-Spatial Solutions, Inc.
www.geospatialsolutions.com

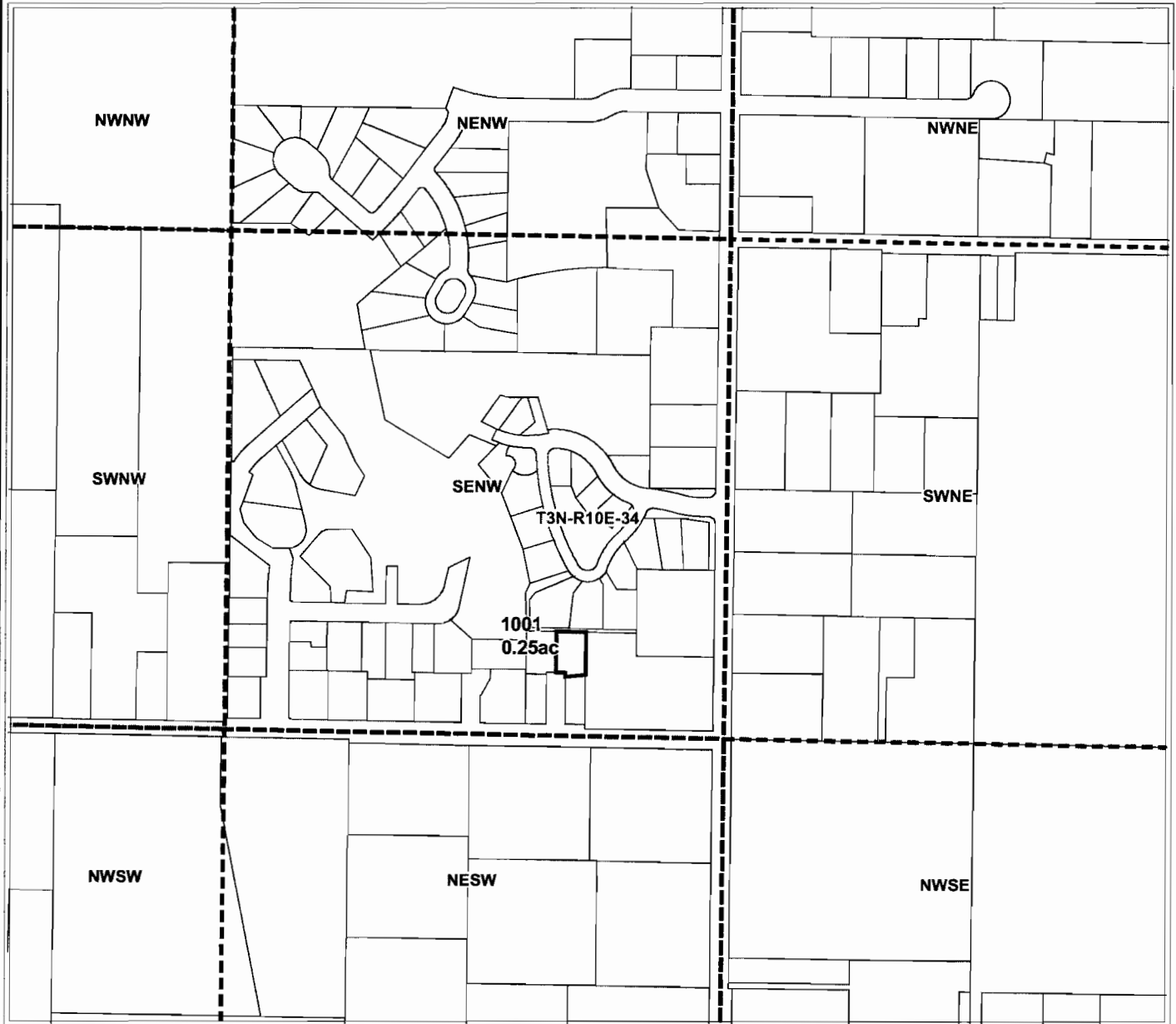
Date Created: April 27, 2004



1 inch equals 400 feet

APPLICATION FOR WATER RIGHT TRANSFER

T3N. R10 SECTION 34



APPLICATION FOR DISTRICT PERMANENT WATER RIGHT TRANSFER
for
Olmstead (Spear)
Tax Lot 1001 - 0.25 Acres



Geo-Spatial Solutions, Inc.
www.geospatialolutions.com

Date Created: August 02, 2004



1 inch equals 400 feet

APPLICATION FOR WATER RIGHT TRANSFER

T3N. R10 SECTION 35



APPLICATION FOR DISTRICT PERMANENT WATER RIGHT TRANSFER

for

Henderson (Hazelview)

Tax Lot 100 - 2.65 Acres

(Lot has since been subdivided)

***NOTE**

2.35ac OFF of NE/SW

0.3ac OFF of SE/SW



Geo-Spatial Solutions, Inc.

www.geospatialolutions.com

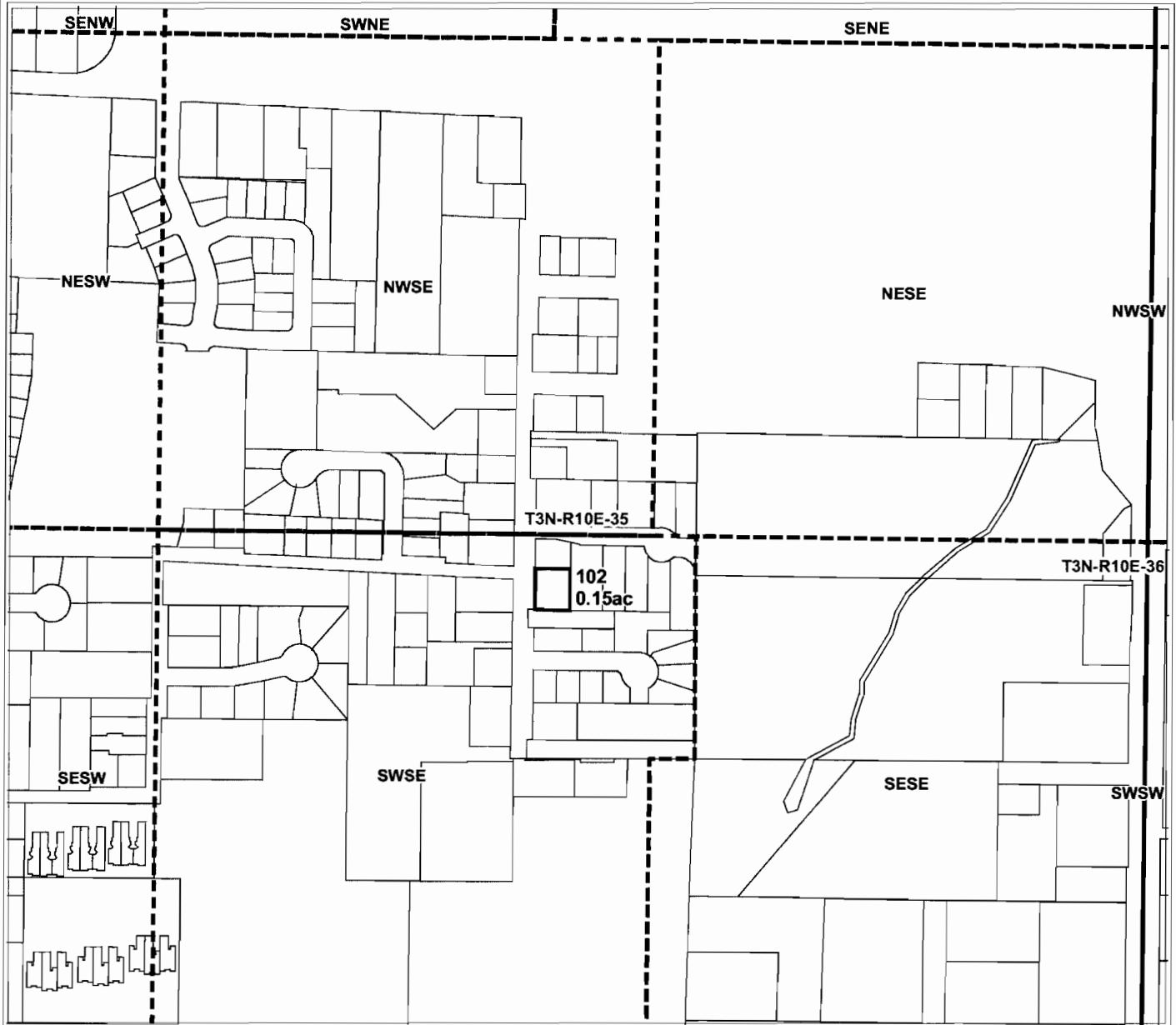
Date Created: August 4, 2004



1 inch equals 400 feet

APPLICATION FOR WATER RIGHT TRANSFER

T3N. R10 SECTION 35



APPLICATION FOR DISTRICT PERMANENT WATER RIGHT TRANSFER
for
Ramacker
Tax Lot 102 - 0.15 Acres



Geo-Spatial Solutions, Inc.
www.geospatialolutions.com

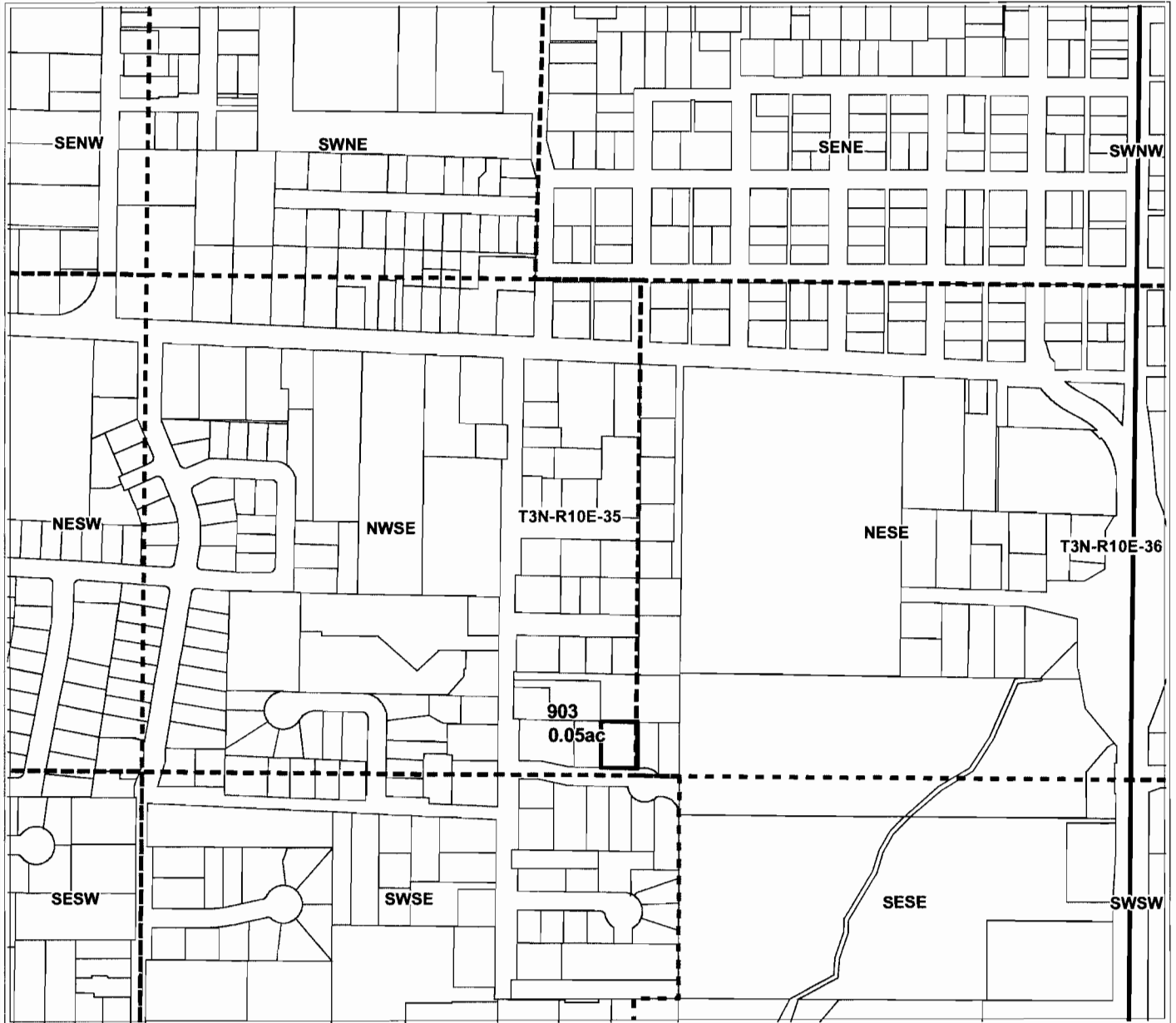
Date Created: July 15, 2004



1 inch equals 400 feet

APPLICATION FOR WATER RIGHT TRANSFER

T3N. R10 SECTION 35



APPLICATION FOR DISTRICT PERMANENT WATER RIGHT TRANSFER

for

McKenna (Chandler)

Tax Lot 903 - 0.05 Acres

(Lot has since been subdivided)



Geo-Spatial Solutions, Inc.

www.geospatialolutions.com

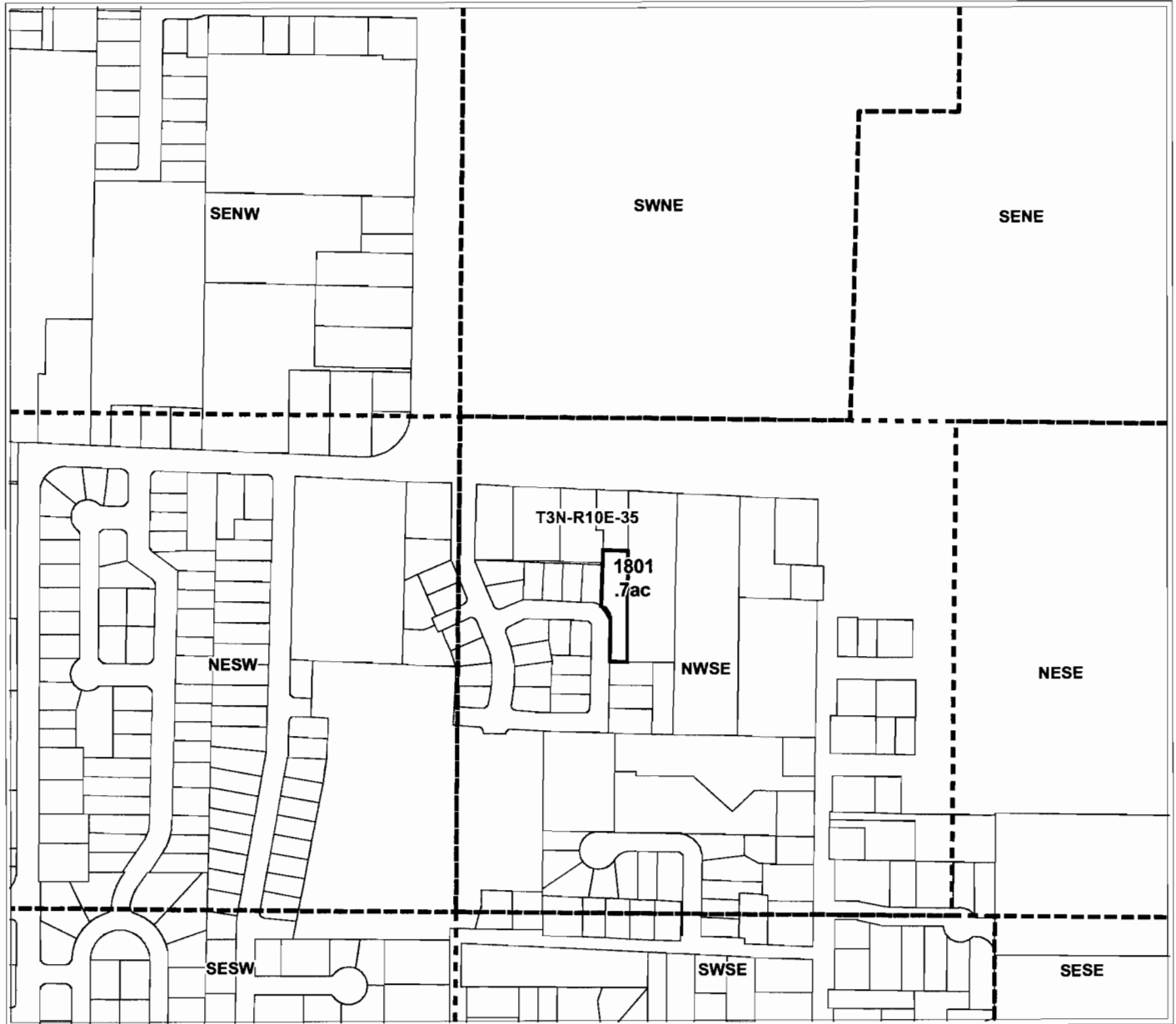
Date Created: July 20, 2004



1 inch equals 400 feet

APPLICATION FOR WATER RIGHT TRANSFER

T3N. R10 SECTION 35



APPLICATION FOR DISTRICT PERMANENT WATER RIGHT TRANSFER

for

Baldwin

Tax Lot 1801 - 0.7 Acres

(Lot has since been subdivided)



Geo-Spatial Solutions, Inc.

www.geospatialsolutions.com

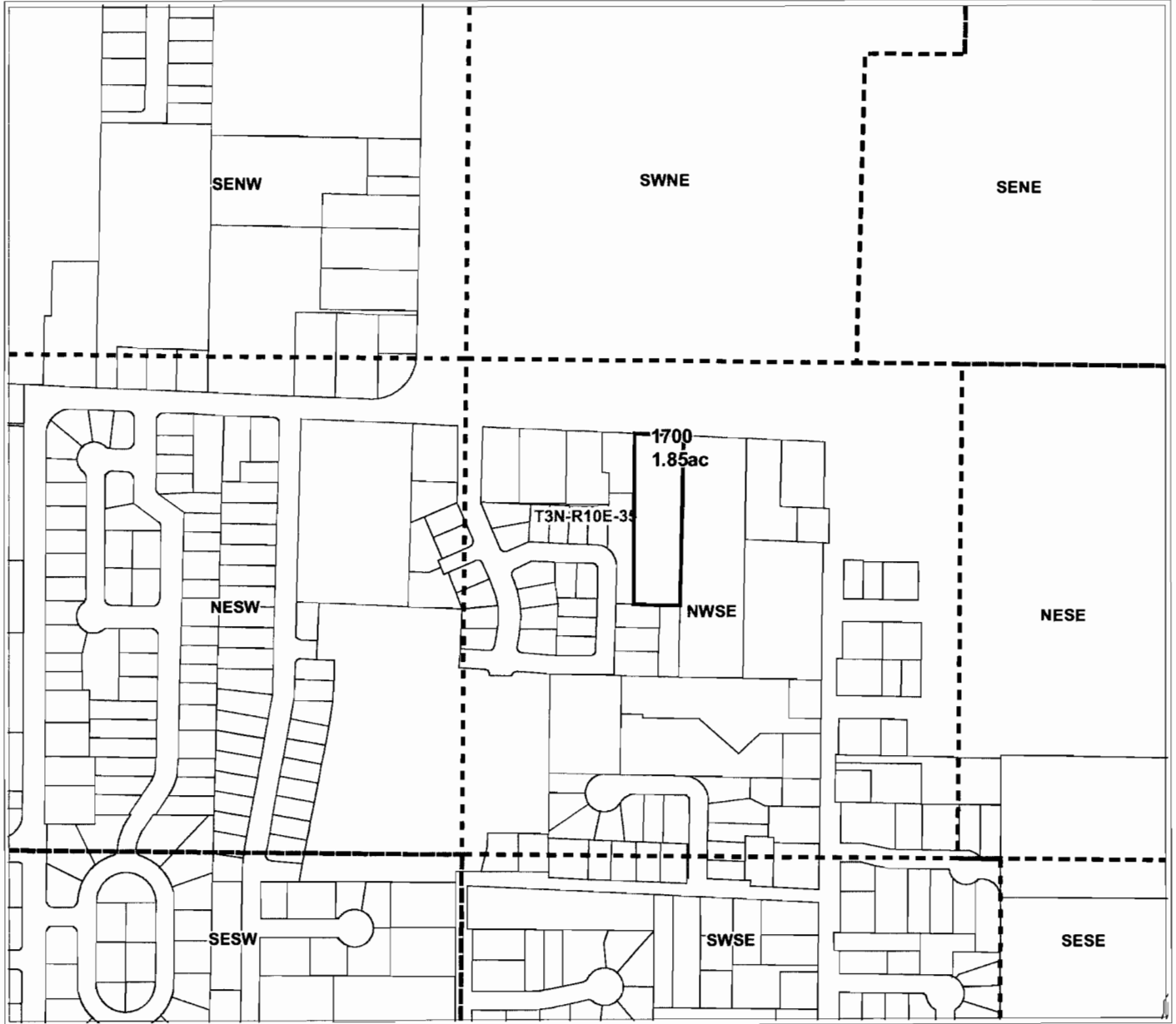
Date Created: April 26, 2004



1 inch equals 400 feet

APPLICATION FOR WATER RIGHT TRANSFER

T3N. R10 SECTION 35



APPLICATION FOR DISTRICT PERMANENT WATER RIGHT TRANSFER

for

Baldwin

Tax Lot 1700 - 1.85 Acres

(Lot has since been subdivided)



Geo-Spatial Solutions, Inc.

www.geospatialsolutions.com

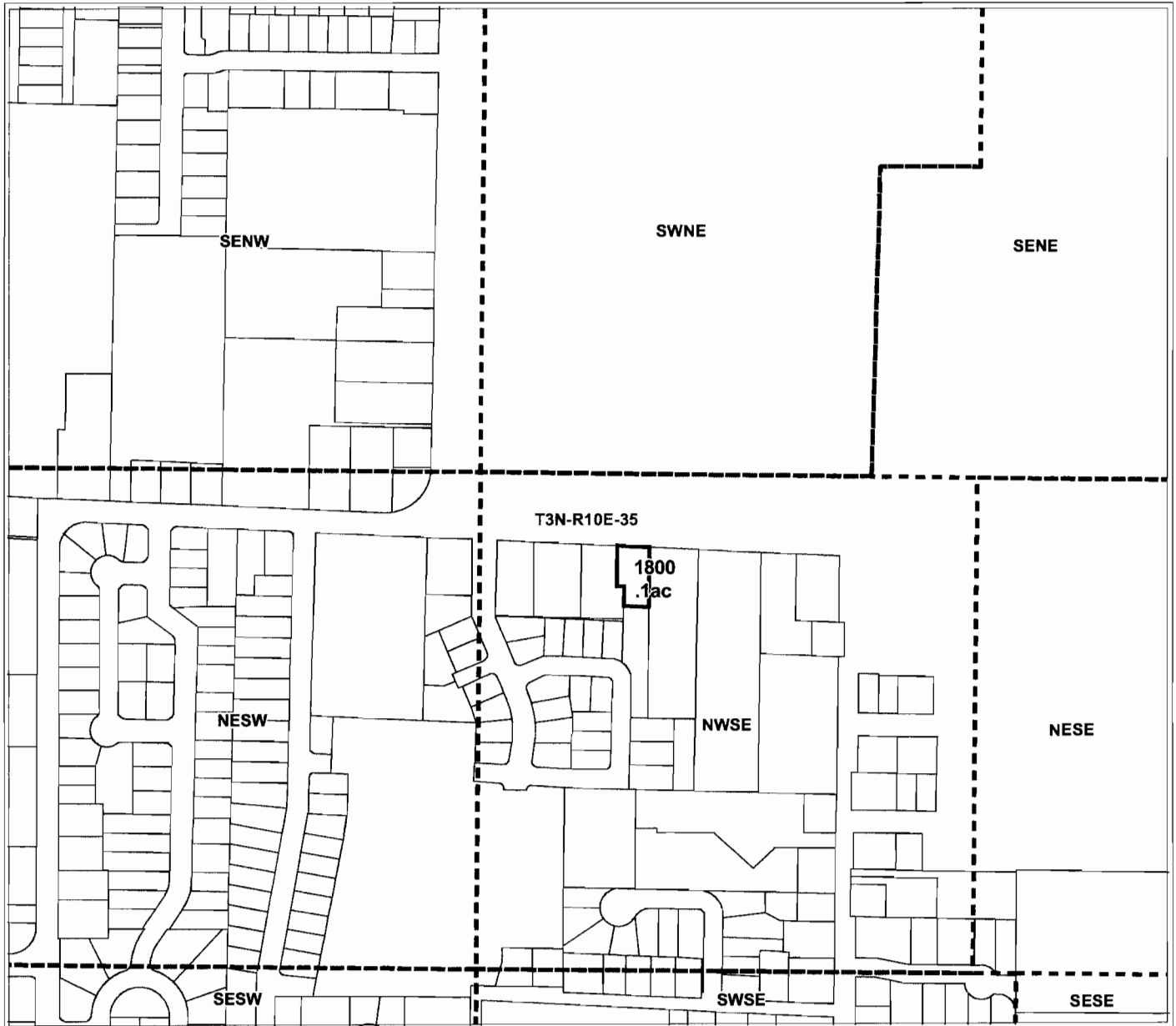
Date Created: April 26, 2004



1 inch equals 400 feet

APPLICATION FOR WATER RIGHT TRANSFER

T3N. R10 SECTION 35



APPLICATION FOR DISTRICT PERMANENT WATER RIGHT TRANSFER
for
Webb
Tax Lot 1800 - 0.1 Acres



Geo-Spatial Solutions, Inc.
www.geospatialsolutions.com

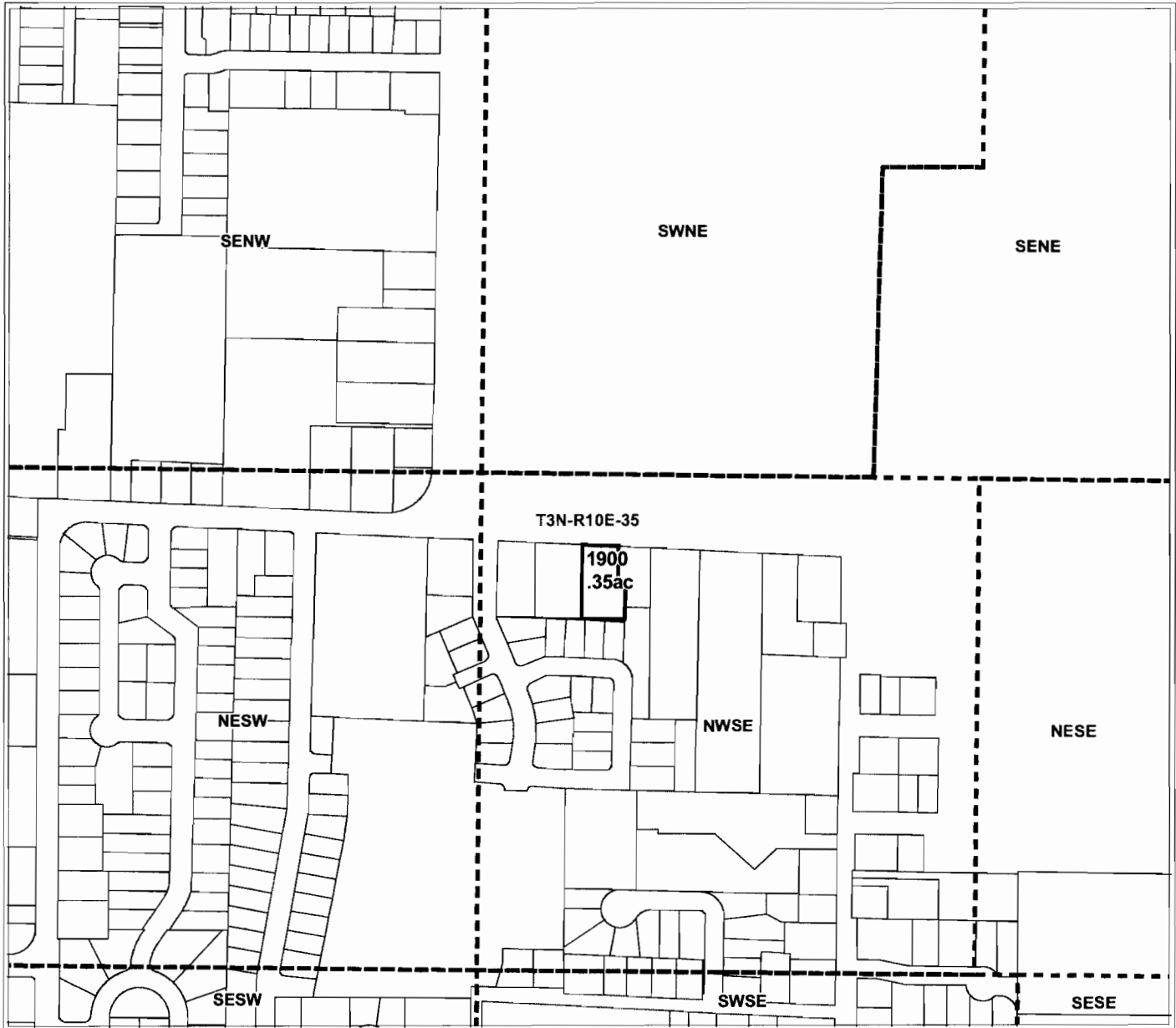
Date Created: April 26, 2004



1 inch equals 400 feet

APPLICATION FOR WATER RIGHT TRANSFER

T3N. R10 SECTION 35



APPLICATION FOR DISTRICT PERMANENT WATER RIGHT TRANSFER
for
Johnson
Tax Lot 1900 - 0.35 Acres



Geo-Spatial Solutions, Inc.
www.geospatialolutions.com

Date Created: April 26, 2004



1 inch equals 400 feet

APPLICATION FOR WATER RIGHT TRANSFER

T3N. R10 SECTION 35



APPLICATION FOR DISTRICT PERMANENT WATER RIGHT TRANSFER for Gibbons Tax Lot 2000 - 0.35 Acres



Geo-Spatial Solutions, Inc.
www.geospatialsolutions.com

Date Created: April 26, 2004



1 inch equals 400 feet

APPLICATION FOR WATER RIGHT TRANSFER

T3N. R10 SECTION 35



APPLICATION FOR DISTRICT PERMANENT WATER RIGHT TRANSFER
for
klein
Tax Lot 2002 - 0.45 Acres



Geo-Spatial Solutions, Inc.
www.geospatialsolutions.com

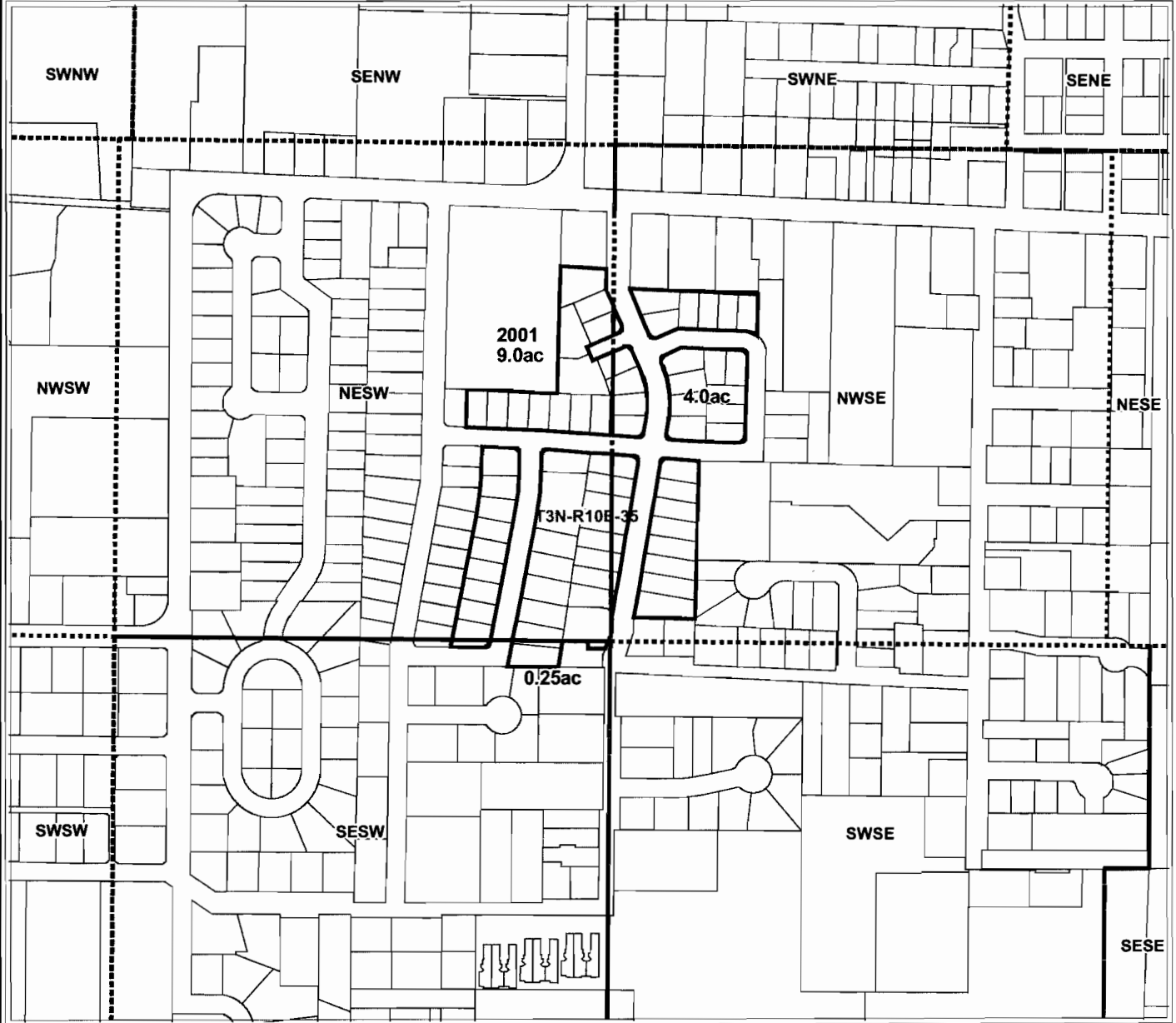
Date Created: April 26, 2004



1 inch equals 400 feet

APPLICATION FOR WATER RIGHT TRANSFER

T3N. R10 SECTION 35



APPLICATION FOR DISTRICT PERMANENT WATER RIGHT TRANSFER

for

Henderson (Hazelview)
Tax Lot 2001 - 13.25 Acres
(Lot has been subdivided)

***NOTE**

4ac OFF of NW/SE
9ac OFF of NE/SW
0.25ac OFF of SE/SW



Geo-Spatial Solutions, Inc.

www.geospatialolutions.com

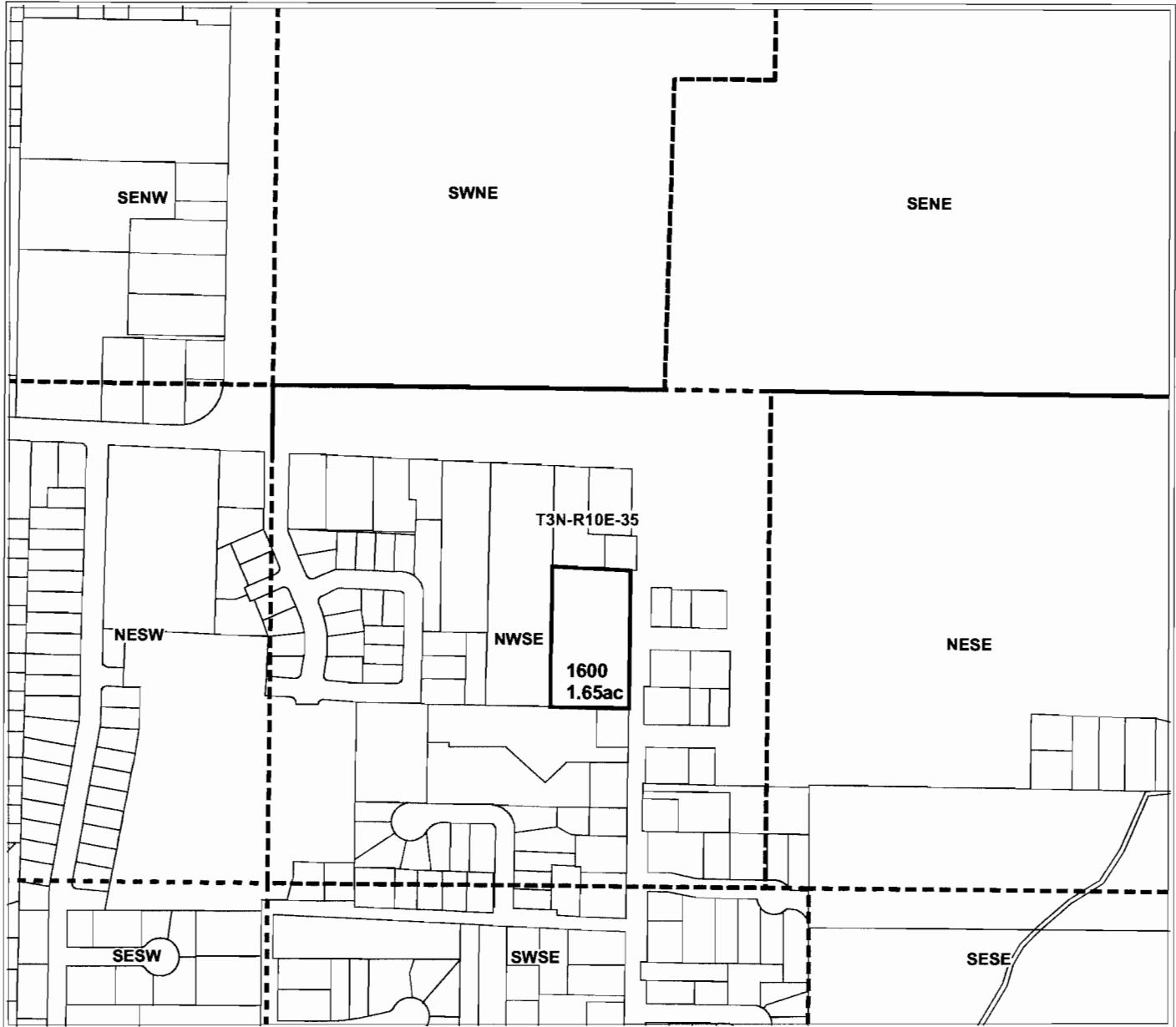
Date Created: August 4, 2004



1 inch equals 400 feet

APPLICATION FOR WATER RIGHT TRANSFER

T3N. R10 SECTION 34



APPLICATION FOR DISTRICT PERMANENT WATER RIGHT TRANSFER
for
First Baptist Church
Tax Lot 1600 - 1.65 Acres



Geo-Spatial Solutions, Inc.
www.geospatialsolutions.com

Date Created: July 15, 2004



1 inch equals 400 feet

APPLICATION FOR WATER RIGHT TRANSFER

T3N. R10 SECTION 35



APPLICATION FOR DISTRICT PERMANENT WATER RIGHT TRANSFER
for
Schempf
Tax Lot 702 - 1.5 Acres
(Lot has been subdivided)



Geo-Spatial Solutions, Inc.
www.geospatialolutions.com

Date Created: July 15, 2004



1 inch equals 400 feet