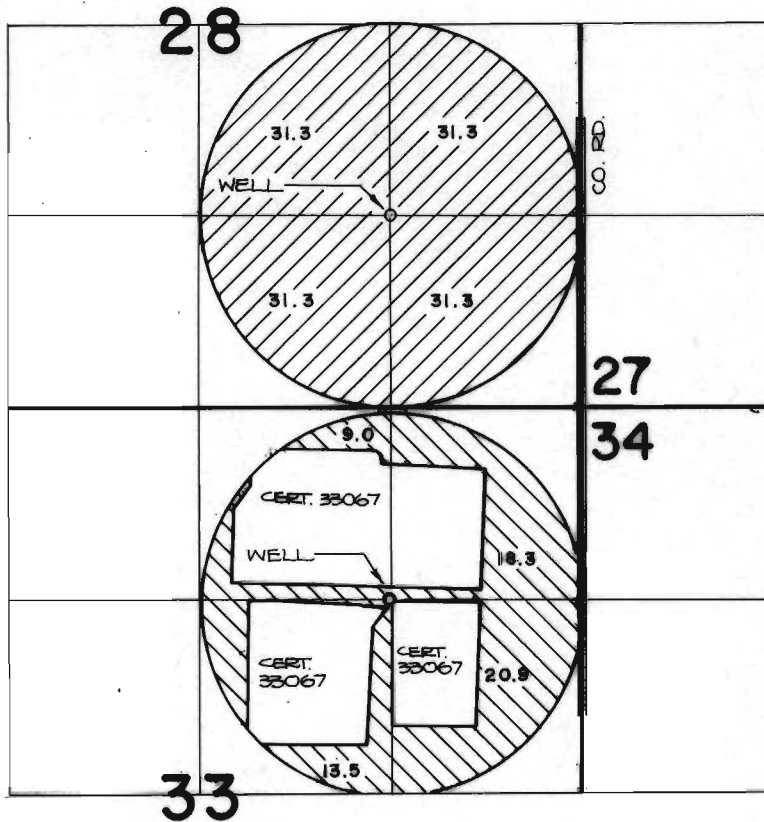



T.26S., R.15E., W.M.



 G-9373

THE WELL IS LOCATED 1320 FT. N. AND 1300 FT. E. FROM THE S. 1/4 CORNER OF SECTION 28.

 G-9834

THE WELL IS LOCATED 3950 FT. N. AND 1330 FT. W. FROM THE S.E. CORNER OF SECTION 28.

SCALE: 4" = 1 MILE
FINAL PROOF SURVEY
 UNDER



G-9373

G-8650

Application No. ~~G-9834~~ Permit No. G-9069.....

IN NAME OF

.....THE POPLARS RANCH, INC.....

Surveyed OCT. 16, 1984, by P. Patten.....