

RECEIVED

SEP 28 2001

WATER RESOURCES DEPT.
SALEM, OREGON

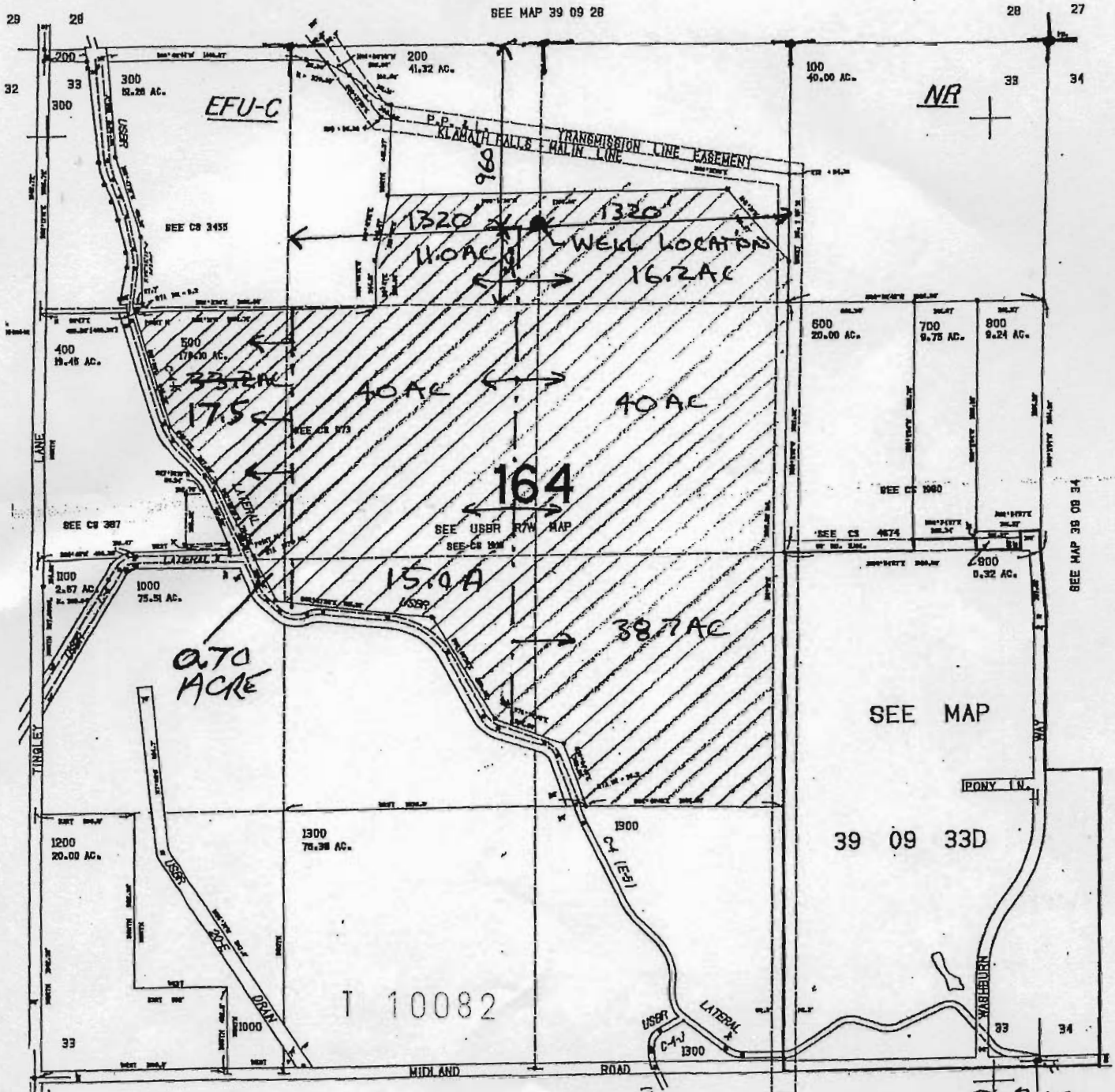
39 09 3
& INDE

APPROVED
LOCATION

SECTION 33 T.39S. R.09E. W.M.
KLAMATH COUNTY

1" = 800'

THIS MAP WAS PREPARED FOR
ASSESSMENT PURPOSE ONLY.



LEGEND

- T SECTION CORNER
- ▨ AREA OF USE
- PROPOSED IRRIGATION WELL
- 8" MAIN LINE IRRIGATION
- WHEEL LINE LOCATIONS

SEE MAP 40 09 04

Application No. 915620
Permit No. 5235

JAN 30 2006

WATER RESOURCES DEPT.
SALEM, OREGON

↑ NORTH
1" = 800'

39 09 33
& INDEX

170.000