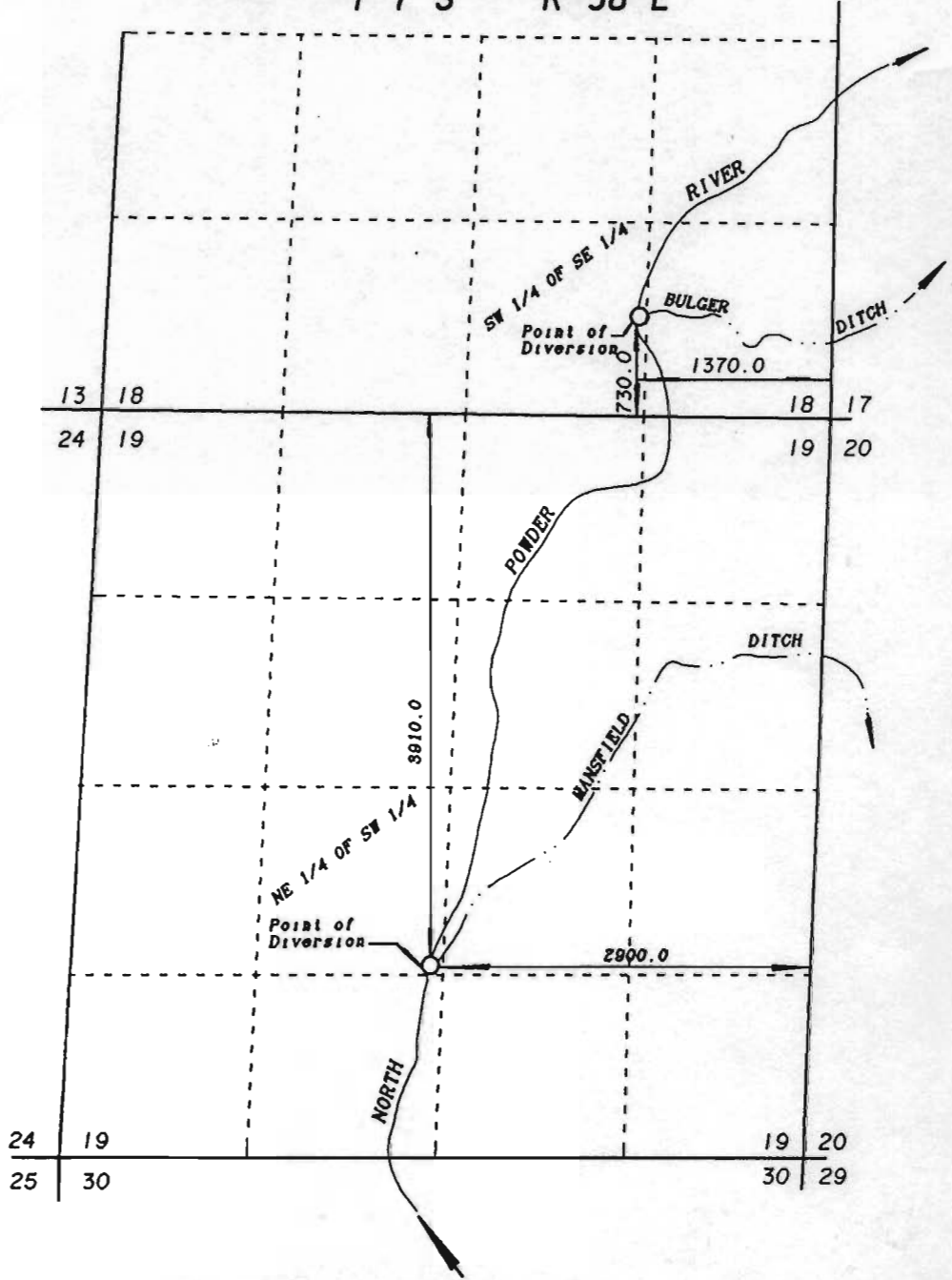
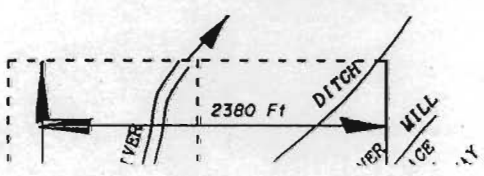


Supplemental Map 2
T 7 S R 38 E



**AUTHORIZED POINTS OF DIVERSION
FOR BULGER DITCH AND
MANSFIELD DITCH.**

T 6 S R 38 E



NOTE:
All lands in Section 17,
the NE 1/4 NE 1/4 of Section 7,
Bulger ditch systems with the
of the NW 1/4 of Section 18.
Lands in Section 7 lying S
are irrigated from the Mansfield
1.0 acre in the NW 1/4 of