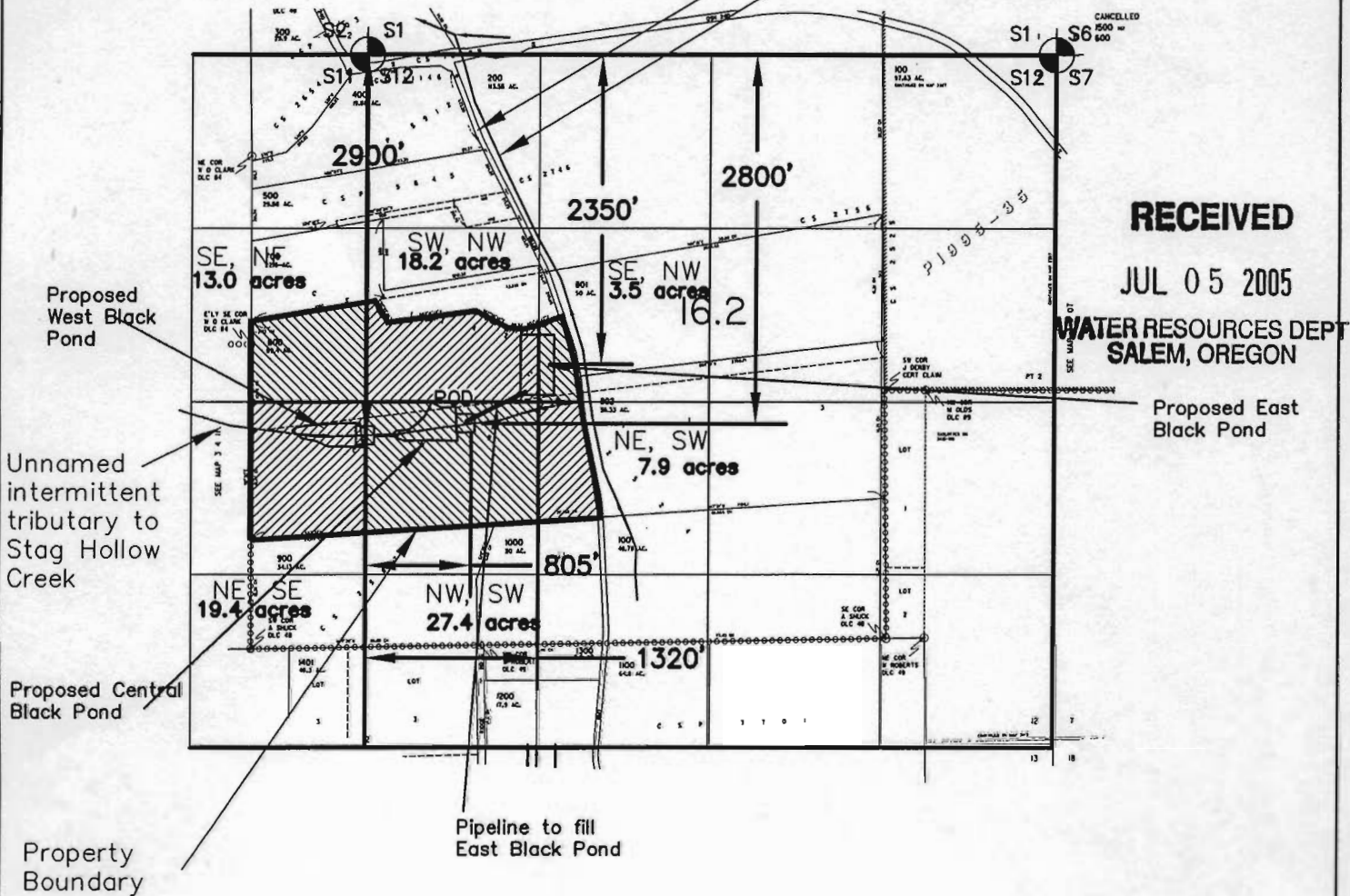


Water Rights Application Map

LOCATED IN TAX LOT 800, SECTION 12, T3S, R4W, WM.
YAMHILL COUNTY, OREGON



Stag Hollow Road
Stag Hollow Creek



RECEIVED

JUL 05 2005

WATER RESOURCES DEPT
SALEM, OREGON

Application done for:
Black Family Vineyards

LEGEND:



Approximate Point of Diversion Locations



Section corner used to scale tax assessor map and then USGS quad map.



Maximum acres to be irrigated

1320 0 660 1320



1 inch = 1320 ft.

Distances based on scaled tax assessor map and USGS topo map.

app no R 86369 Supercedes
permit no R-14224 R-14236



Project: 305-2-048
Drawing: 3052048A
By: URSTADT
Date: 25 MAY 2005