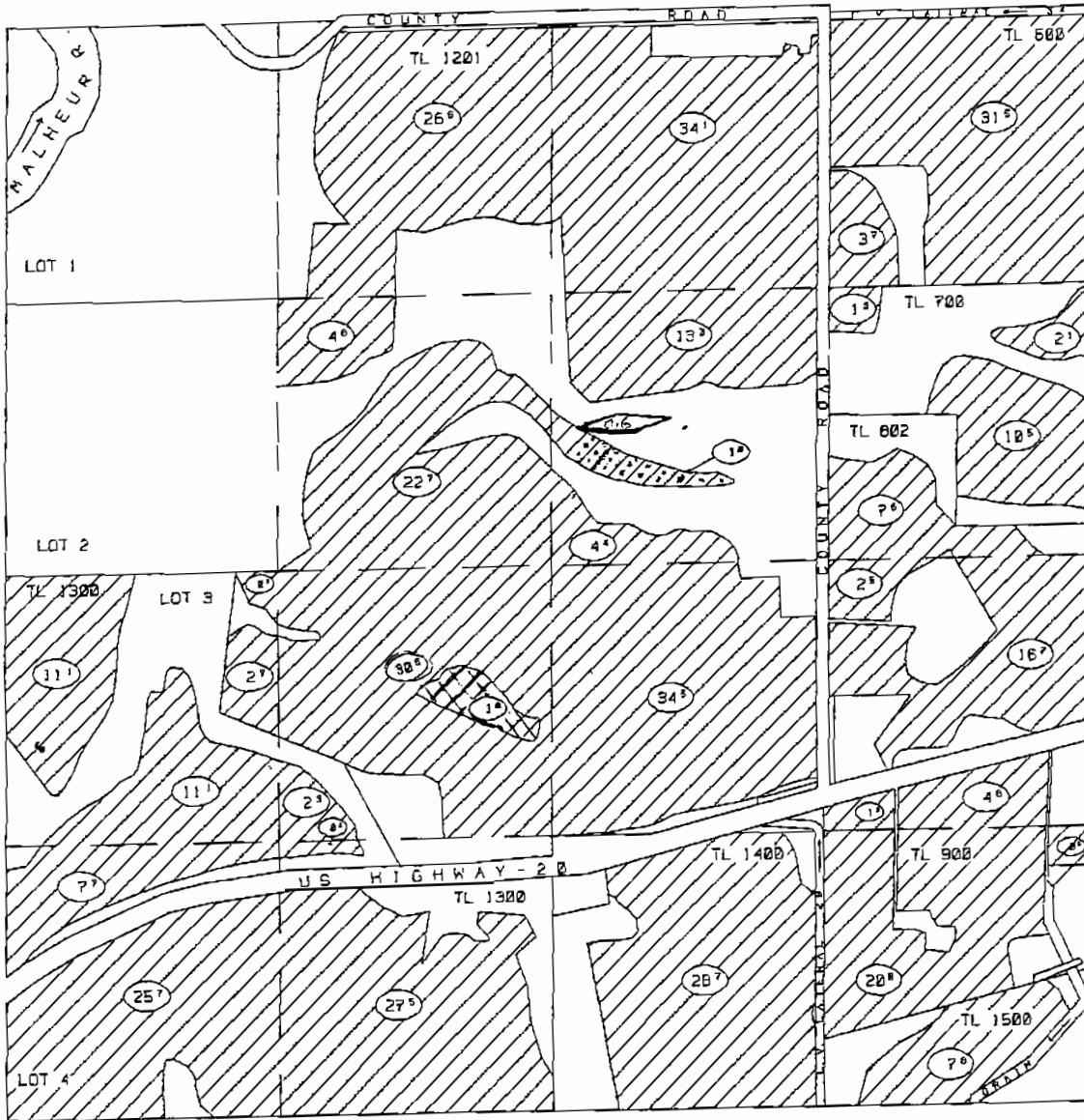


TO LANDS

FROM LANDS



SECTION 30
T19 S., R43 E., W.M.



remaining right



IRR. ACRES



CERT. #15715

PROPERTY BOUNDARY

BURIED PIPE

BRIDGE

DIVERSION DAM



Vale Oregon
Irrigation
District

HB 3111 Petition			
Page		of	Pages
Digitized By	RJ & LHP	Approved	

RECEIVED

JAN 30 2006

WATER RESOURCES DEPT
SALEM, OREGON

T 10081

SCALE 1 INCH = 1000 FEET