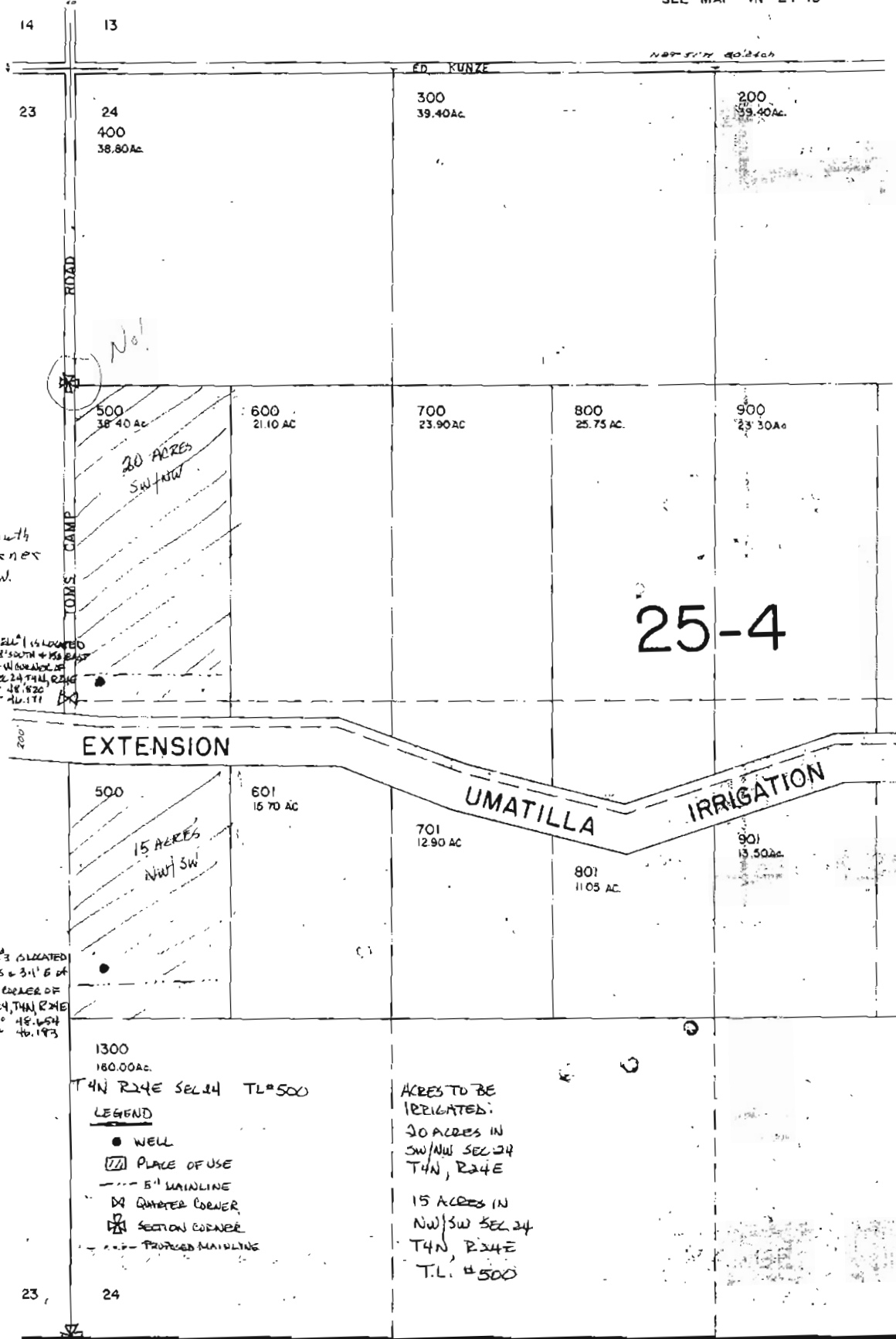


WORK COPY

RECEIVED
AUG 25 2004
WATER RESOURCES DEPT
SALEM, OREGON

SECTION 24 T.4N. R.24E. W.1
MORROW COUNTY
1" = 400'

SEE MAP 4N 24 13



Well #1
1250' South
of W. corner
152' E of W.
corner

WELL #1 IS LOCATED
22' SOUTH + 152' EAST
OF W. CORNER OF
SEC 24, T4N, R24E
GPS: N 45° 48.820
W 119° 46.171

WELL #3 IS LOCATED
1240' S + 31' E OF
W 1/4 CORNER OF
SEC 24, T4N, R24E
GPS: N 45° 48.654
W 119° 46.193

1300
180.00Ac.
T4N R24E SEC 24 TL#500

- LEGEND
- WELL
 - ▨ PLACE OF USE
 - 5' MAINLINE
 - ⊠ QUARTER CORNER
 - ⊠ SECTION CORNER
 - - - PROPOSED MAINLINE

ACRES TO BE
IRRIGATED:
20 ACRES IN
SW/1/4 SEC 24
T4N, R24E

15 ACRES IN
NW/1/4 SW SEC 24
T4N, R24E
T.L. #500

IVED
5/1990
STATE OF OREGON
APPRAISAL DIV.

app no. G16303

Permit no. G15835