

T6N-R35E

SECTION 34

SECTION 35

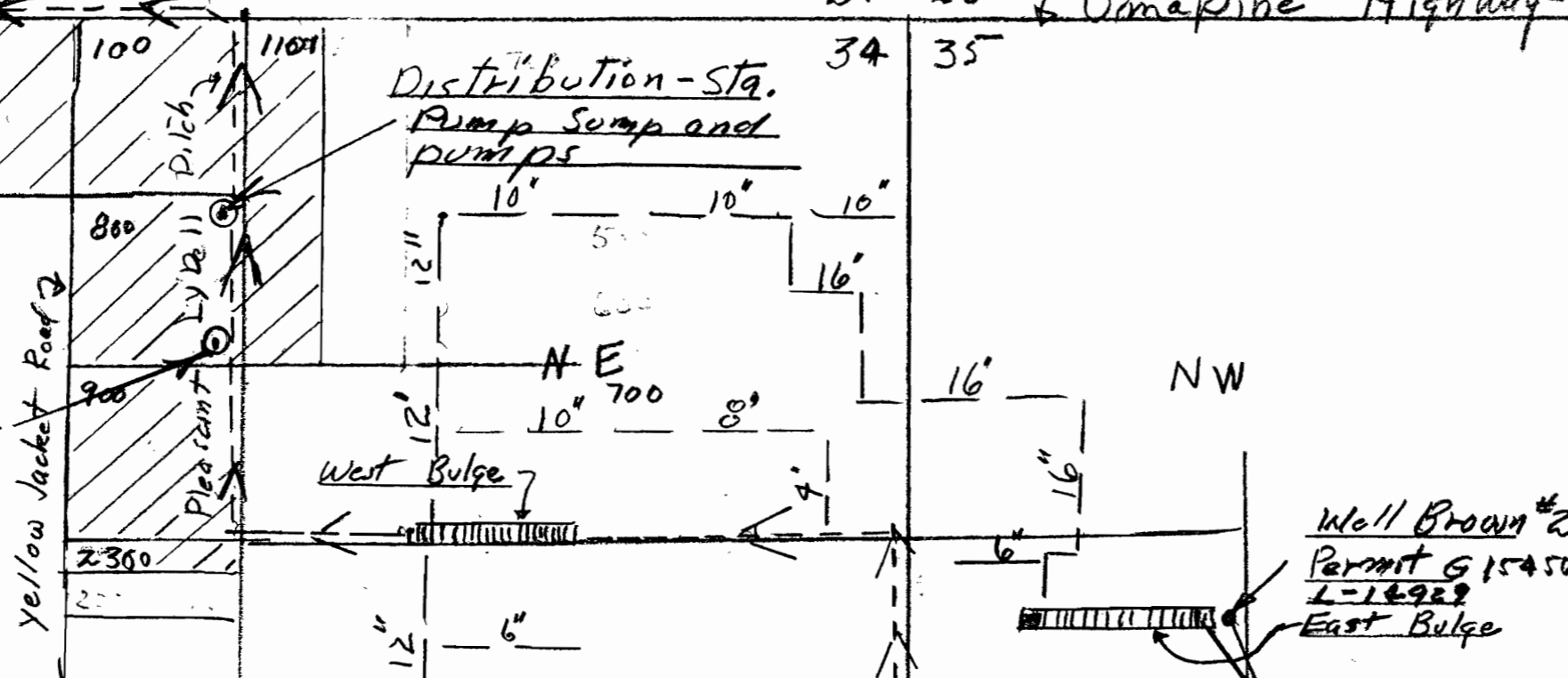
Umapiine Highway

27  
34

27 | 26  
34 | 35



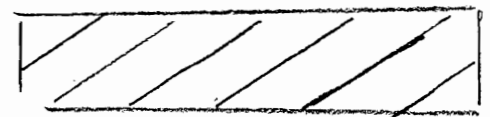
NW  
Proposed  
Well site



LEGEND

----- Lydell & Pleasant Ditches

16" 12" 10" Pipe sizes



Supplemental Irrigation Catchment Box

To East Bulge

To Lydell Ditch

To others

Permit - 15322  
L-51295  
Well - Brown #1

RECEIVED  
APR 13 2006  
WATER RESOURCES DEPT  
SALEM, OREGON

34

34 | 35

2640'

1" = 660'  
scale

T 10137

Enclosure #3  
Location Map

1216