



LAND MARKERS, INC.

PAGE 2 OF 2

2775 25th ST. S.E.
PH. (503) 581-0911

DATE: AUG. 03, 2000
JOB NO. 00-084

SALEM, OR 97309
FAX (503) 581-5343

WATER RIGHTS TRANSFER MAP

APPLICATION NO. 45134

RECEIVED

AUG 04 2000

WEST 1/4 CORNER
SECTION 18

SCHNEIDER ROAD R/W = 80'

WATER RESOURCES DEPT.
SALEM, OREGON

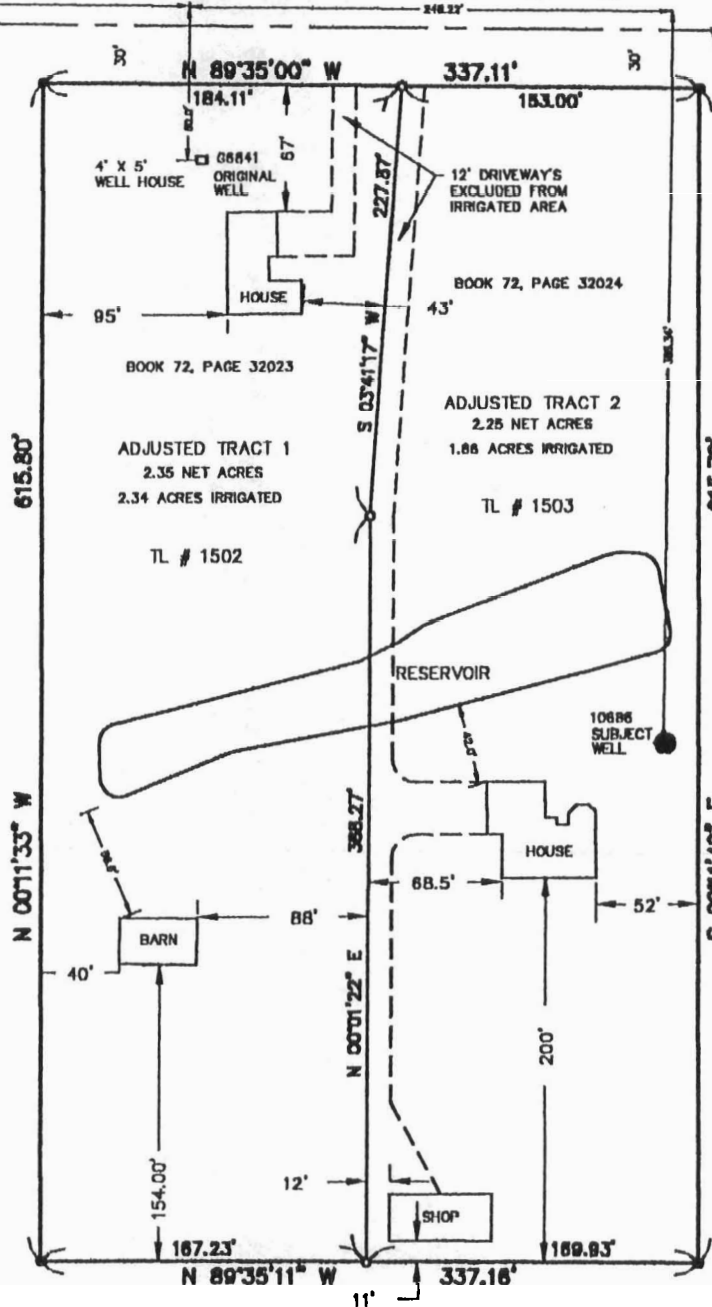
AREAS TO BE REMOVED FROM IRRIGATED LAND

TL # 1502	TL # 1503
ROADWAY 0.04 AC.	ROADWAY 0.22 AC.
HOUSE 0.04 AC.	HOUSE 0.05 AC.
BARN 0.02 AC.	SHOP 0.03 AC.
TOTAL 0.10 AC.	TOTAL 0.30 AC.

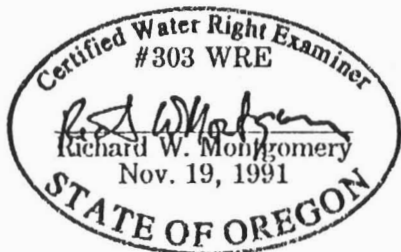
TL 1501	0.10 AC.
TL 1503	0.30 AC.
TOTAL	0.40 AC.

TOTAL AREA 4.6 AC.*
TOTAL NON-IRRIGATED 0.40 AC.
TOTAL IRRIGATED 4.20 AC.*

NOTE: RESERVOIR EXCLUDED FROM COMPS.



SCALE: 1" = 100'



EXPIRES: 12/31/2000

This is not a land survey. No monuments set. This map does not guarantee that any particular use may be made of the property illustrated hereon. Parties should check with the appropriate city or county planning department to verify approved uses.