

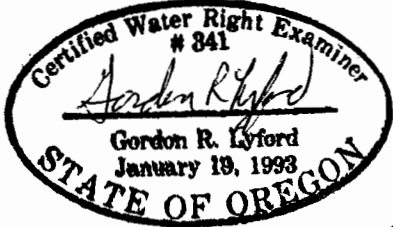
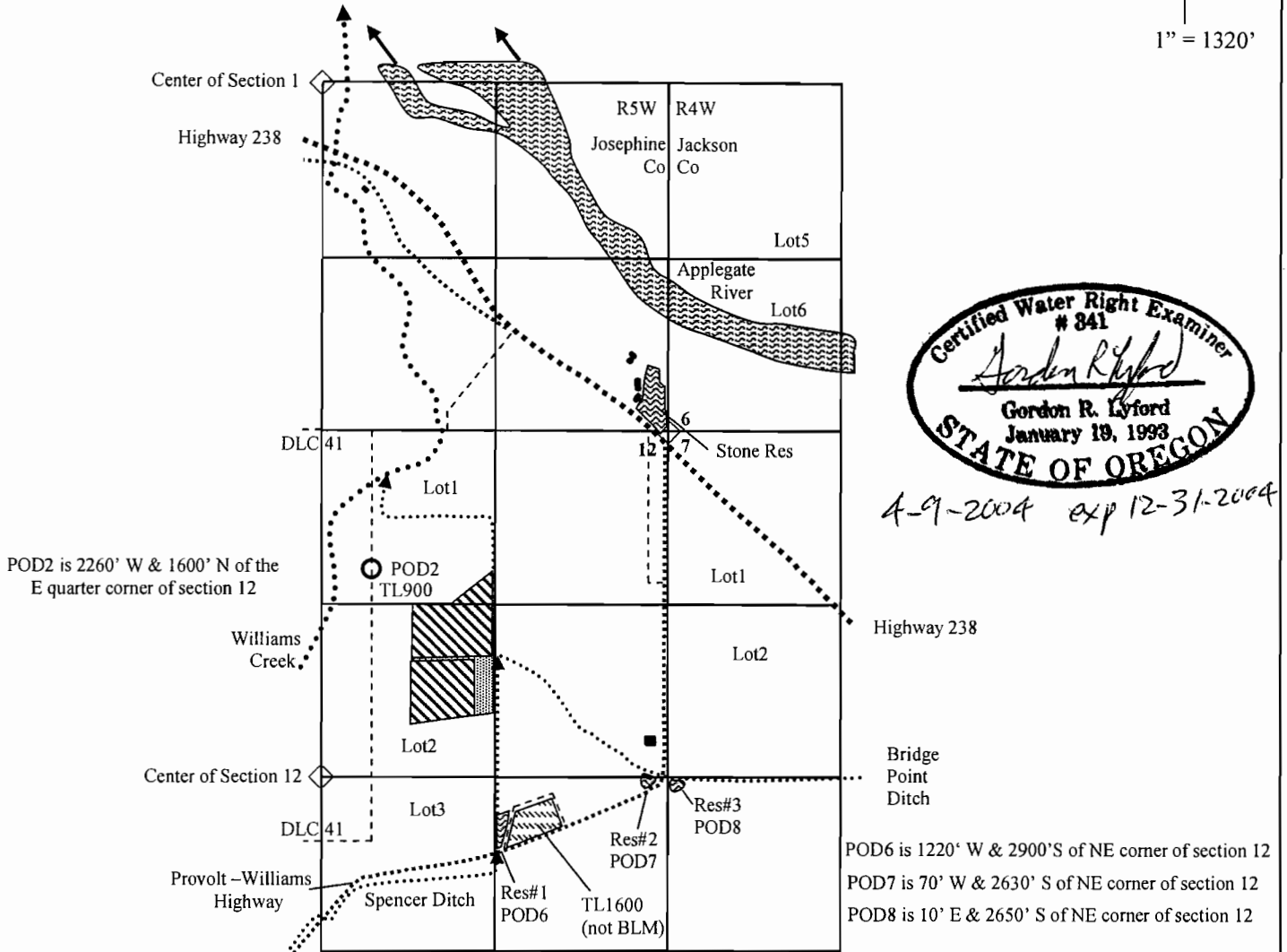
TRANSFER APPLICATION MAP FOR BLM PROVOLT SEED ORCHARD  
 C# 16309 Primary Irrigation from Williams Creek with an 1869 Priority  
 C# 49852 Supplemental Irrigation from a Drain Ditch and Reservoirs #1, #2, and #3

T38S, R5W, Portions of Section 12, W.M., Josephine County  
 Existing Primary and Supplemental Irrigation Water Rights

April 9, 2004



1" = 1320'



*4-9-2004 exp 12-31-2004*

- Portions of Certificate #16309 & Certificate #49852. 1.0 acres in Lot 1 (NW1/4NE1/4) and 12.0 acres in Lot 2 (SW1/4NE1/4) of section 12. Transfer to instream flow rights into Williams Creek for Certificate #16309. No change in supplemental irrigation for Certificate #49852.
- Portions of Certificate #16309 & Certificate #49852. 2.0 acres in Lot 2 (SW1/4NE1/4) of section 12. Cancel these acres located under roads and abandoned.
- Remaining rights under portions of Certificate #16309. 2.0 acres in the NE1/4SE1/4 of section 12 (not BLM).
- Under Certificate #49851 reservoir #1 in the NE1/4SE1/4 of section 12, reservoir #2 in the NE1/4SE1/4 and SE1/4NE1/4 of section 12, and reservoir #3 in the NW1/4SW1/4 of section 7. Change irrigation use to multi-purpose.

**RECEIVED**

MAY 13 2004

WATER RESOURCES DEPT  
 SALEM, OREGON

*T. 9726*

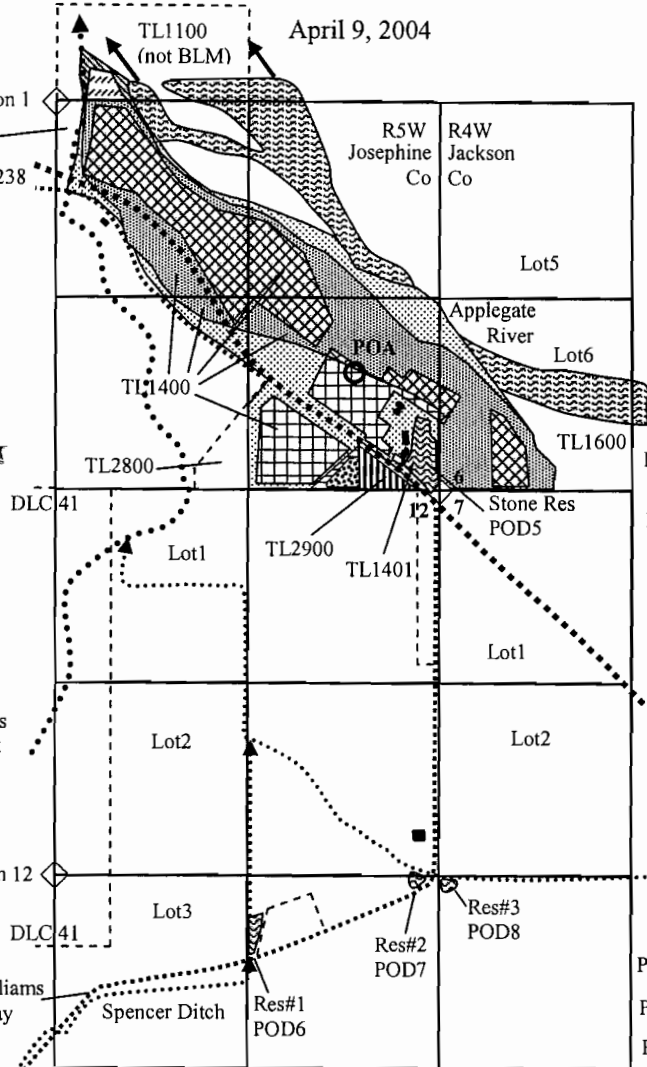
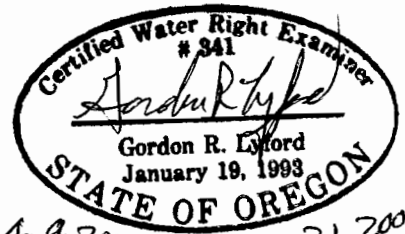
This map was drawn by Gordon R. Lyford for the Bureau of Land Management that manages tax lots 900, 1200, 1400, 1401, 1402, 1500, 1600, 1601, 2800, and 2900. This map is for the purpose of identifying the location of the water rights only and is not intended to provide legal dimensions or locations of property ownership lines.

**TRANSFER APPLICATION MAP FOR BLM PROVOLT SEED ORCHARD**  
**C# 32813 Primary Irrigation from the Applegate River with an October 1898 Priority**  
**C# 43265 Supplemental Irrigation from Waste Water and Stone Reservoir**  
**C# 49852 Supplemental Irrigation from a Drain Ditch and Reservoirs #1, #2, and #3**  
**T38S, R5W, Portions of Section 1, W.M., Josephine County**  
**T38S, R4W, Portions of Sections 6, W.M., Jackson County**  
**Existing Primary and Supplemental Irrigation Water Rights**

N

1" = 1320'

**RECEIVED**  
**MAY 13 2004**  
 WATER RESOURCES DEPT  
 SALEM, OREGON

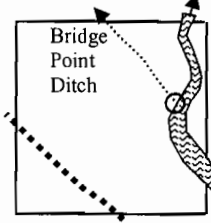


POA is 570' W & 810' N of SE corner of section 1

POD5 is 50' W & 540' N of SE corner of section 1

POD1 coordinates are not specified in C#32813

T38S, R4W, Section 17  
 SW1/4SE1/4



Highway 238

Bridge Point Ditch

Applegate River

POD6 is 1220' W & 2900'S of NE corner of section 12

POD7 is 70' W & 2630' S of NE corner of section 12

POD8 is 10' E & 2650' S of NE corner of section 12

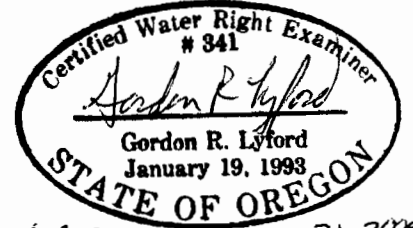
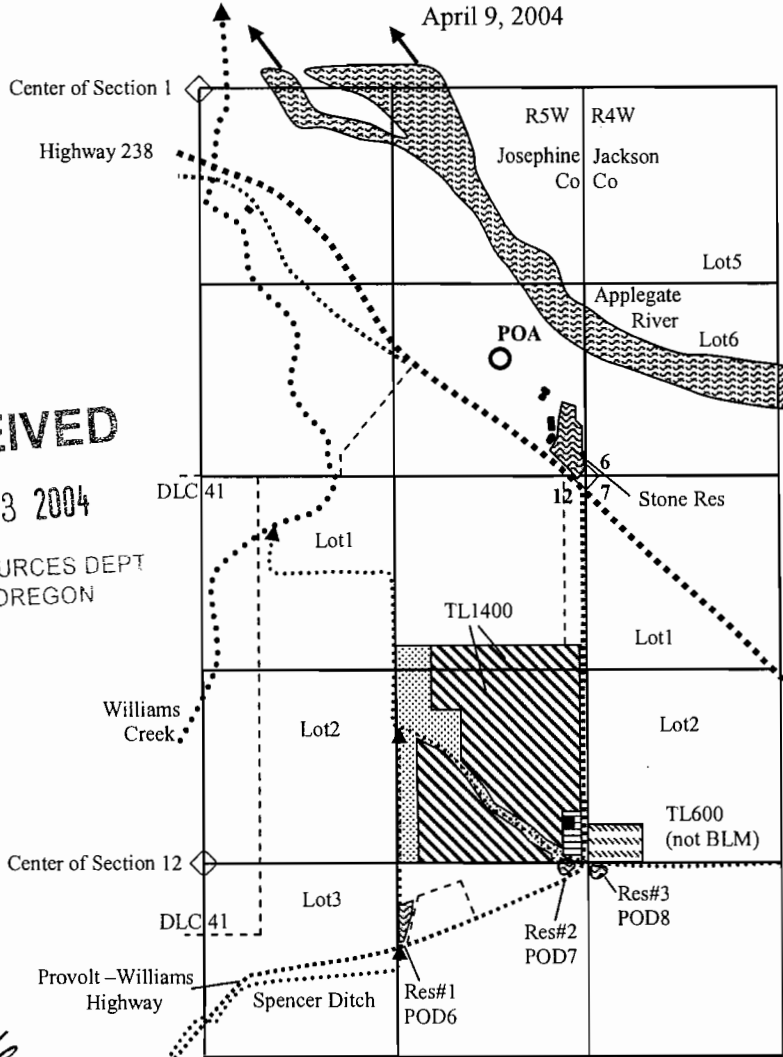
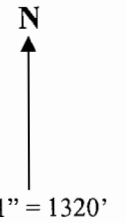
T-9726

- Portions of Certificate #32813 & Certificate #43265. 12.7 acres in the NW1/4SE1/4, 0.5 acres in the SW1/4SE1/4, 4.7 acres in the NE1/4SE1/4, and 3.8 acres in the SE1/4SE1/4 of section 1. 3.1 acres in Lot 6 ( SW1/4SW1/4) of section 6. Change POD1 to POA for Certificate #32813. No change in supplemental irrigation for Certificate #43265.
- Portions of Certificate #32813. 10.6 acres in the SE1/4SE1/4 of section 1. Change POD1 to POA.
- Portions of Certificate #32813 & Certificate #49852. 0.7 acres in the SE1/4SE1/4 of section 1. Change POD1 to POA for Certificate #32813. No change in supplemental irrigation for Certificate #49852.
- Portions of Certificate #49852. 1.5 acres in the SE1/4SE1/4 of section 1. No change proposed.
- Portions of Certificate #32813. 2.7 acres in the NW1/4SE1/4, 0.7 acres in the SW1/4SE1/4, 3.3 acres in the NE1/4SE1/4, and 10.9 acres in the SE1/4SE1/4 of section 1. 0.9 acres in Lot 6 (SW1/4SW1/4) of section 6. Cancel these acres located under roads, buildings, rivers, reservoir, and abandoned.
- Portions of Certificate #32813 & Certificate #43265. 6.9 acres in the NW1/4SE1/4, 1.5 acres in the SW1/4SE1/4, 1.6 acres in the NE1/4SE1/4, and 8.2 acres in the SE1/4SE1/4 of section 1. 7.5 acres in Lot 6 ( SW1/4SW1/4) of section 6. Cancel these acres located under roads and abandoned.
- Portions of Certificate #32813 & Certificate #49852. 0.6 acres in the SE1/4SE1/4 of section 1. Cancel these acres located under roads and abandoned.
- Remaining rights under a portion of Certificate #32813. 0.8 acres in the SW1/4NE1/4 of section 1. These acres appear to be abandoned (not BLM).
- Remaining rights under portions of Certificates #32813 & #43265. 1.2 acres in the SW1/4NE1/4 of section 1. These acres appear to be abandoned (not BLM).
- Stone reservoir under Certificate #43264 in the SE1/4SE1/4 of section 1. Change supplemental irrigation use to multi-purpose.

This map was drawn by Gordon R. Lyford for the Bureau of Land Management that manages tax lots 900, 1200, 1400, 1401, 1402, 1500, 1600, 1601, 2800, and 2900. This map is for the purpose of identifying the location of the water rights only and is not intended to provide legal dimensions or locations of property ownership lines.

TRANSFER APPLICATION MAP FOR BLM PROVOLT SEED ORCHARD  
 C# 32818 Primary Irrigation from the Applegate River with an October 1898 Priority  
 C# 49852 Supplemental Irrigation from a Drain Ditch and Reservoirs #1, #2, and #3

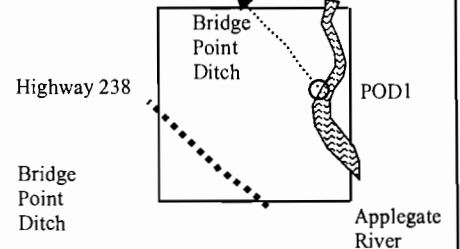
T38S, R5W, Portions of Section 12, W.M., Josephine County  
 T38S, R4W, Portions of Section 7, W.M., Jackson County  
 Existing Primary and Supplemental Irrigation Water Rights



POA is 570' W & 810' N of SE corner of section 1

POD1 coordinates are not specified in C#32818

T38S, R4W, Section 17  
 SW1/4SE1/4



POD6 is 1220' W & 2900' S of NE corner of section 12  
 POD7 is 70' W & 2630' S of NE corner of section 12  
 POD8 is 10' E & 2650' S of NE corner of section 12

**RECEIVED**  
 MAY 13 2004  
 WATER RESOURCES DEPT  
 SALEM, OREGON

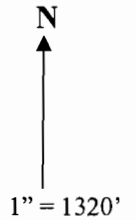
T-9726

- Portions of Certificate #32818 & Certificate #49852. 3.8 acres in the NE1/4NE1/4 and 28.9 acres in the SE1/4NE1/4 of section 12. Change POD1 to POA for Certificate #32818. No change in supplemental irrigation for Certificate #49852.
- Portions of Certificate #32818 & Certificate #49852. 1.2 acres in the NE1/4NE1/4 and 9.9 acres in the SE1/4NE1/4 of section 12. Cancel these acres located under roads, canal, and abandoned.
- Portions of Certificate #32818. 0.7 acres in the SE1/4NE1/4 of section 12. Cancel these acres located under roads, buildings, canal, reservoir, and abandoned.
- Remaining rights under portions of Certificate #32818. 2.0 acres in Lot 2 (SW1/4NW1/4) of section 7. These acres appear to be partially abandoned (not BLM).
- Under Certificate #49851 reservoir #1 in the NE1/4SE1/4 of section 12, reservoir #2 in the NE1/4SE1/4 and SE1/4NE1/4 of section 12, and reservoir #3 in the NW1/4SW1/4 of section 7. Change irrigation use to multi-purpose.

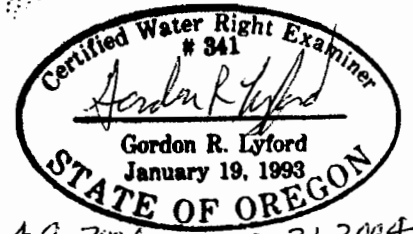
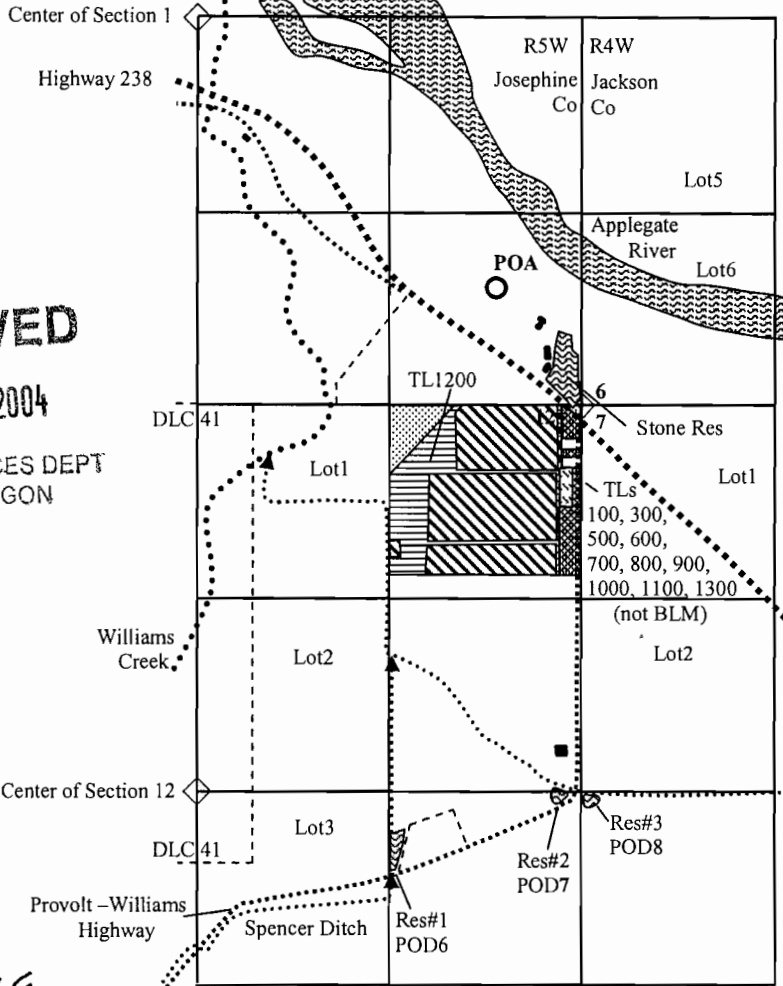
This map was drawn by Gordon R. Lyford for the Bureau of Land Management that manages tax lots 900, 1200, 1400, 1401, 1402, 1500, 1600, 1601, 2800, and 2900. This map is for the purpose of identifying the location of the water rights only and is not intended to provide legal dimensions or locations of property ownership lines.

TRANSFER APPLICATION MAP FOR BLM PROVOLT SEED ORCHARD  
 C# 32820 Primary Irrigation from the Applegate River with an October 1898 Priority  
 C# 49852 Supplemental Irrigation from a Drain Ditch and Reservoirs #1, #2, and #3

T38S, R5W, Portions of Section 12, W.M., Josephine County  
 Existing Primary and Supplemental Irrigation Water Rights



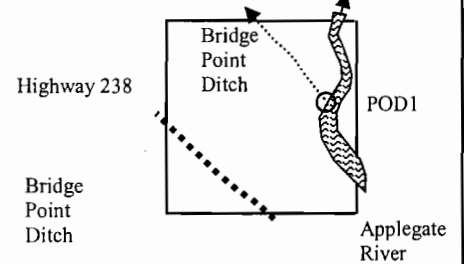
April 9, 2004



POA is 570' W & 810' N of SE corner of section 1

POD1 coordinates are not specified in C#32820

T38S, R4W, Section 17  
 SW1/4SE1/4



POD6 is 1220' W & 2900' S of NE corner of section 12

POD7 is 70' W & 2630' S of NE corner of section 12

POD8 is 10' E & 2650' S of NE corner of section 12

RECEIVED

MAY 13 2004

WATER RESOURCES DEPT  
 SALEM, OREGON

T-9726

- Portions of Certificate #32820 & Certificate #49852. 21.7 acres in the NE1/4NE1/4 of section 12. Change POD1 to POA for Certificate #32820. No change in supplemental irrigation for Certificate #49852.
- Portions of Certificate #32820. 2.3 acres in the NE1/4NE1/4 of section 12. Cancel these acres located under roads and abandoned.
- Portions of Certificate #32820 & Certificate #49852. 6.0 acres in the NE1/4NE1/4 of section 12. Cancel these acres located under roads and abandoned.
- Remaining rights under a portion of Certificate #32820. 3.1 acres in the NE1/4NE1/4 of section 12. These acres appear to be abandoned (not BLM).
- Remaining rights under portions of Certificate #32820 & Certificate #49852. 0.5 acres in the NE1/4NE1/4 of section 12. These acres appear to be abandoned (not BLM).
- Under Certificate #49851 reservoir #1 in the NE1/4SE1/4 of section 12, reservoir #2 in the NE1/4SE1/4 and SE1/4NE1/4 of section 12, and reservoir #3 in the NW1/4SW1/4 of section 7. Change irrigation use to multi-purpose.

This map was drawn by Gordon R. Lyford for the Bureau of Land Management that manages tax lots 900, 1200, 1400, 1401, 1402, 1500, 1600, 1601, 2800, and 2900. This map is for the purpose of identifying the location of the water rights only and is not intended to provide legal dimensions or locations of property ownership lines.

TRANSFER APPLICATION MAP FOR BLM PROVOLT SEED ORCHARD  
 C# 32945 Primary Irrigation from Williams Creek with an December 1908 Priority  
 C# 49852 Supplemental Irrigation from a Drain Ditch and Reservoirs #1, #2, and #3

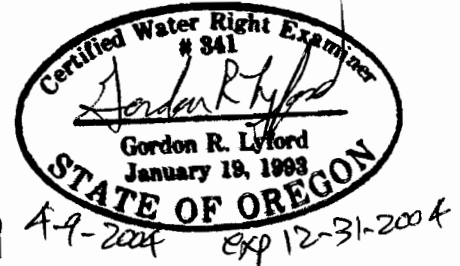
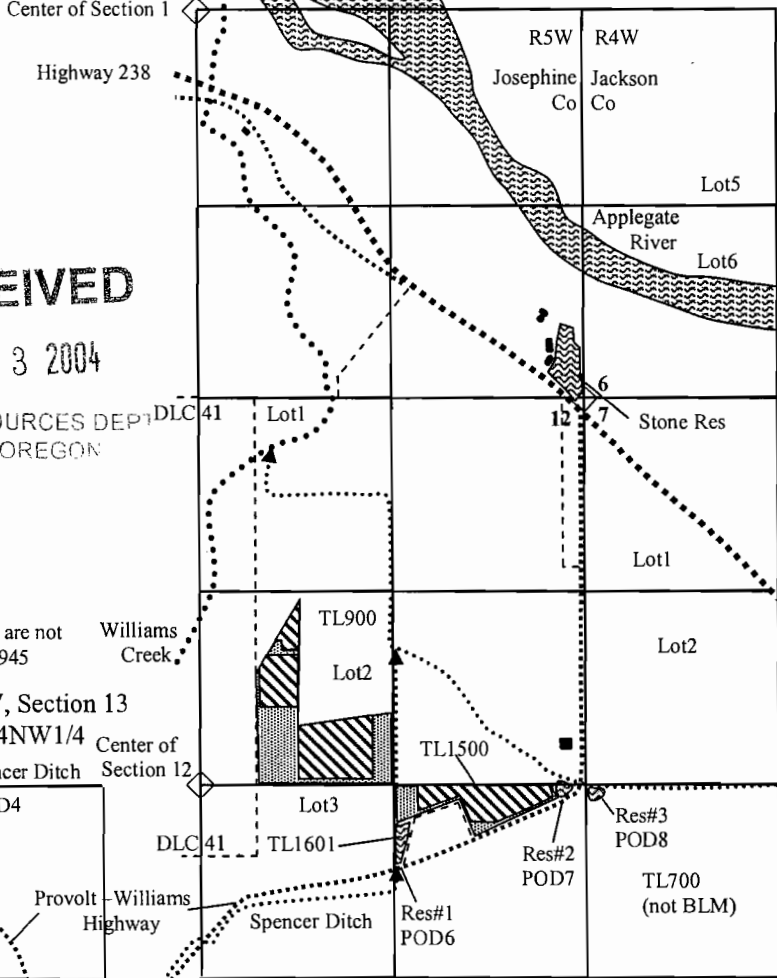
T38S, R5W, Portions of Section 12, W.M., Josephine County  
 Existing Primary and Supplemental Irrigation Water Rights

N



1" = 1320'

April 9, 2004



RECEIVED

MAY 13 2004

WATER RESOURCES DEPT  
 SALEM OREGON

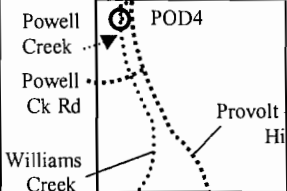
POD4 coordinates are not  
 specified in C#32945

T38S, R5W, Section 13

NW1/4NW1/4

Center of Section 12

Spencer Ditch



POD6 is 1220' W & 2900' S of NE corner of section 12  
 POD7 is 70' W & 2630' S of NE corner of section 12  
 POD8 is 10' E & 2650' S of NE corner of section 12

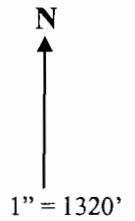
- Portions of Certificate #32945 & Certificate #49852. 6.8 acres in Lot 2 (SW1/4NE1/4) and 3.9 acres in the NE1/4SE1/4 of section 12. Transfer to instream flow rights into Williams Creek for Certificate #32945. No change in supplemental irrigation for Certificate #49852.
- Portions of Certificate #32945. 5.7 acres in Lot 2 (SW1/4NE1/4) and 2.8 acres in the NE1/4SE1/4 of section 12. Portions of Certificate #49852. 5.7 acres in Lot 2 (SW1/4NE1/4) and 2.3 acres in the NE1/4SE1/4 of section 12. Cancel these acres located under roads, reservoirs, and abandoned.
- Under Certificate #49851 reservoir #1 in the NE1/4SE1/4 of section 12, reservoir #2 in the NE1/4SE1/4 and SE1/4NE1/4 of section 12, and reservoir #3 in the NW1/4SW1/4 of section 7. Change irrigation use to multi-purpose.

T-9726

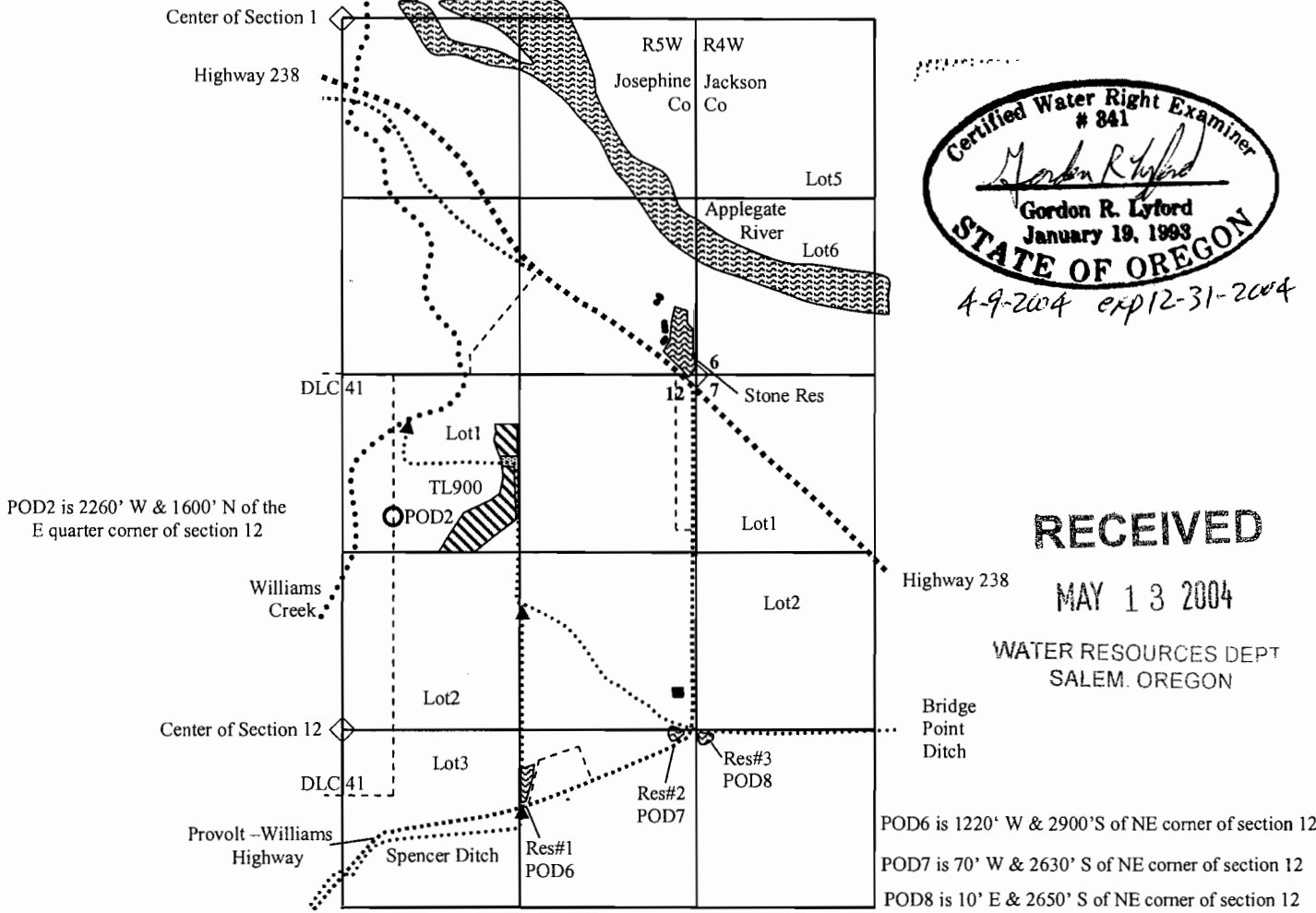
This map was drawn by Gordon R. Lyford for the Bureau of Land Management that manages tax lots 900, 1200, 1400, 1401, 1402, 1500, 1600, 1601, 2800, and 2900. This map is for the purpose of identifying the location of the water rights only and is not intended to provide legal dimensions or locations of property ownership lines.

TRANSFER APPLICATION MAP FOR BLM PROVOLT SEED ORCHARD  
 C# 32946 Primary Irrigation from Williams Creek with a December 1908 Priority  
 C# 49852 Supplemental Irrigation from a Drain Ditch and Reservoirs #1, #2, and #3

T38S, R5W, Portions of Section 12, W.M., Josephine County  
 Existing Primary and Supplemental Irrigation Water Rights



April 9, 2004



4-9-2004 exp 12-31-2004

**RECEIVED**

MAY 13 2004

WATER RESOURCES DEPT  
 SALEM, OREGON

- Portions of Certificate #32946 & Certificate #49852. 5.5 acres in Lot 1 (NW1/4NE1/4) of section 12. Transfer to instream flow rights into Williams Creek for Certificate #32946. No change in supplemental irrigation for Certificate #49852.
- Portions of Certificate #32946 & Certificate #49852. 0.5 acres in Lot 1 (NW1/4NE1/4) of section 12. Cancel these acres located under roads, canal, and abandoned.
- Under Certificate #49851 reservoir #1 in the NE1/4SE1/4 of section 12, reservoir #2 in the NE1/4SE1/4 and SE1/4NE1/4 of section 12, and reservoir #3 in the NW1/4SW1/4 of section 7. Change irrigation use to multi-purpose.

T-9726

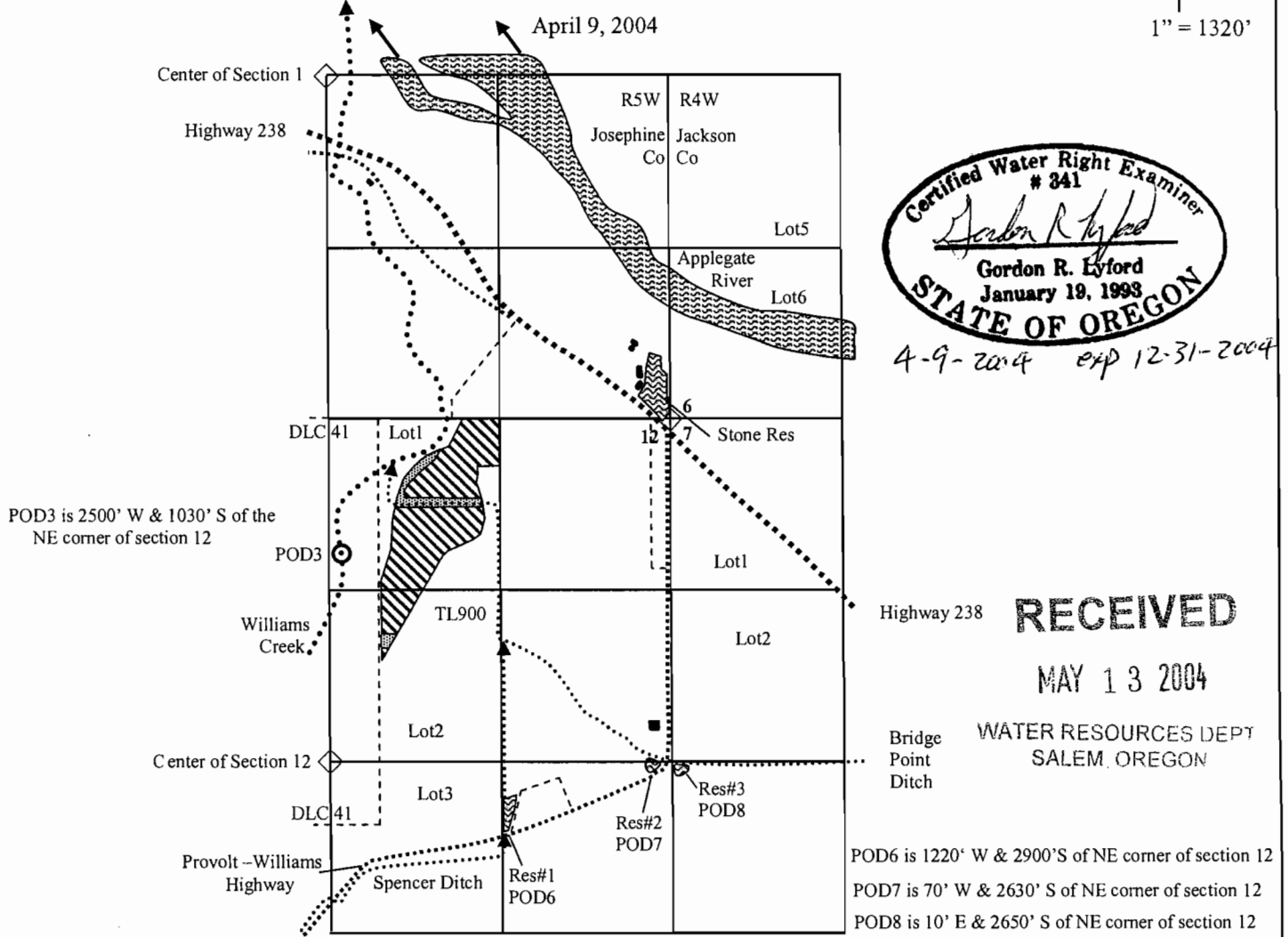
This map was drawn by Gordon R. Lyford for the Bureau of Land Management that manages tax lots 900, 1200, 1400, 1401, 1402, 1500, 1600, 1601, 2800, and 2900. This map is for the purpose of identifying the location of the water rights only and is not intended to provide legal dimensions or locations of property ownership lines.

TRANSFER APPLICATION MAP FOR BLM PROVOLT SEED ORCHARD  
 C# 49853 Primary Irrigation from Williams Creek with a January 19, 1961 Priority  
 C# 49852 Supplemental Irrigation from a Drain Ditch and Reservoirs #1, #2, and #3

T38S, R5W, Portions of Section 12, W.M., Josephine County  
 Existing Primary and Supplemental Irrigation Water Rights



1" = 1320'



- Portions of Certificate #49853 & Certificate #49852. 12.2 acres in Lot 1 (NW1/4NE1/4) and 1.6 acres in Lot 2 (SW1/4NE1/4) of section 12. Transfer to instream flow rights into Williams Creek for Certificate #49853. No change in supplemental irrigation for Certificate #49852.
- Portions of Certificate #49853 & Certificate #49852. 1.7 acres in Lot 1 (NW1/4NE1/4) and 0.2 acres in Lot 2 (SW1/4NE1/4) of section 12. Cancel these acres located under roads, canal, and abandoned.
- Under Certificate #49851 reservoir #1 in the NE1/4SE1/4 of section 12, reservoir #2 in the NE1/4SE1/4 and SE1/4NE1/4 of section 12, and reservoir #3 in the NW1/4SW1/4 of section 7. Change irrigation use to multi-purpose.

T-9720

This map was drawn by Gordon R. Lyford for the Bureau of Land Management that manages tax lots 900, 1200, 1400, 1401, 1402, 1500, 1600, 1601, 2800, and 2900. This map is for the purpose of identifying the location of the water rights only and is not intended to provide legal dimensions or locations of property ownership lines.

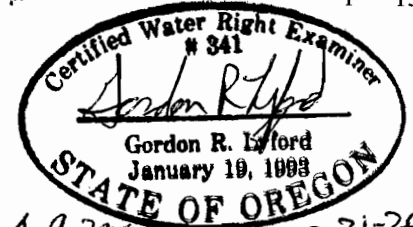
TRANSFER APPLICATION MAP FOR BLM PROVOLT SEED ORCHARD  
 C# 32813, C#32818, and C#32820 Primary Irrigation Rights and  
 Conserved Water Rights with an October 1898 Priority

T38S, R5W, Portions of Sections 1 and 12, W.M., Josephine  
 T38S, R4W, Portions of Section 6, W.M., Jackson County  
 Proposed Primary Irrigation Water Rights

April 9, 2004



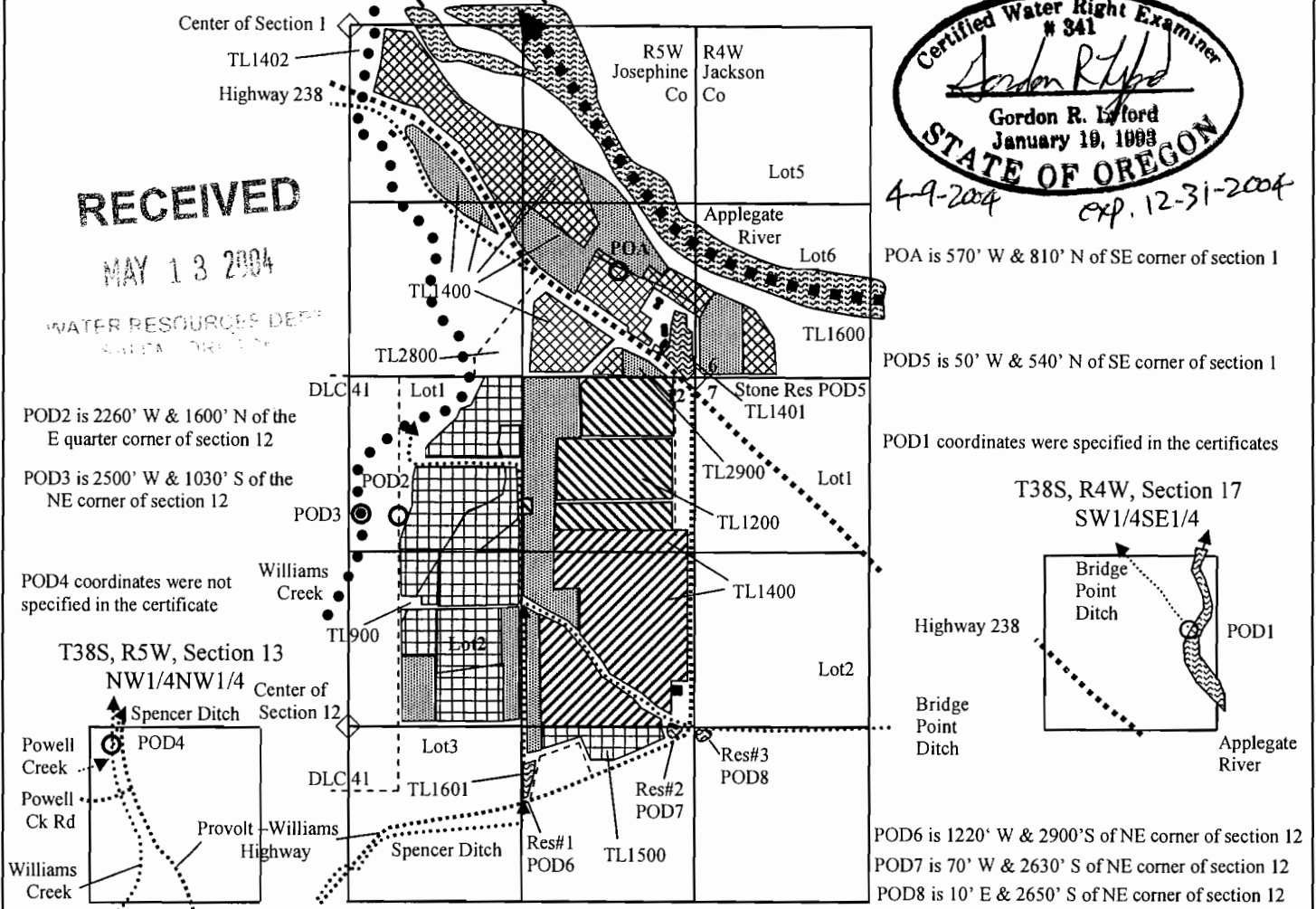
1" = 1320'



**RECEIVED**

MAY 13 2004

WATER RESOURCES DEPT  
 OREGON DEPARTMENT OF

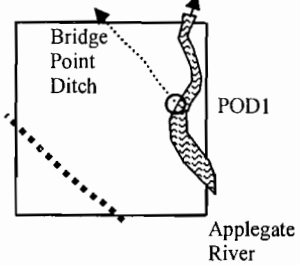


POA is 570' W & 810' N of SE corner of section 1

POD5 is 50' W & 540' N of SE corner of section 1

POD1 coordinates were specified in the certificates

T38S, R4W, Section 17  
 SW1/4SE1/4



POD6 is 1220' W & 2900'S of NE corner of section 12

POD7 is 70' W & 2630' S of NE corner of section 12

POD8 is 10' E & 2650' S of NE corner of section 12

- Portions of Certificate #32813. 12.7 acres in the NW1/4SE1/4, 0.5 acres in the SW1/4SE1/4, 4.7 acres in the NE1/4SE1/4, and 15.1 acres in the SE1/4SE1/4 of section 1. 3.1 acres in Lot 6 (SW1/4SW1/4) of section 6. Proposed change from POD1 to POA.
- Portions of Certificate #32818. 3.8 acres in the NE1/4NE1/4 and 28.9 acres in the SE1/4NE1/4 of section 12. Proposed change from POD1 to POA.
- Portions of Certificate #32820. 21.7 acres in the NE1/4NE1/4 of section 12. Proposed change from POD1 to POA.
- Applied conservation water from C#32813, C#32818, and C#32820 to the former locations of C#16309, C#32945, C#32946, and C#49853. 18.7 acres in Lot 1 (NW1/4NE1/4), 20.4 acres in Lot 2 (SW1/4NE1/4), and 3.9 acres in the NE1/4SE1/4 of section 12. Proposed water source is POA.
- Applied conservation water from C#32813, C#32818, and C#32820 to new lands. 2.7 acres in the NW1/4SE1/4, 1.0 acres in the SW1/4SE1/4, 1.3 acres in the NE1/4SE1/4, and 8.7 acres in the SE1/4SE1/4 of section 1. 4.0 acres in Lot 6 (SW1/4SW1/4) of section 6. 5.8 acres in Lot 2 (SW1/4NE1/4), 9.0 acres in the NE1/4NE1/4, 5.2 acres in the SE1/4NE1/4, and 0.4 acres in the NE1/4SE1/4 of section 12. Proposed water source is POA.
- Applegate River instream flow rights from water conservation under C#32813, C#32818, and C#32820 providing 0.695 cfs with a priority of October 1898.
- Williams Creek instream flow rights providing 0.221 cfs from C#16309 with a priority of 1869, 0.214 cfs from C#32945 with a priority of December 1908, 0.11 cfs from C#32946 with a priority of December 1908, and 0.345 cfs from C#49853 with a priority of January 19, 1961.
- Stone reservoir under Certificate #43264; and reservoirs #1, #2, and #3 under Certificate #49851 for multi-purpose use. The use of 0.067 cfs from conservation water is for the maintenance of Stone reservoir, and 0.006 cfs is for road construction and prescribed fire operations on BLM lands.

This map was drawn by Gordon R. Lyford for the Bureau of Land Management that manages tax lots 900, 1200, 1400, 1401, 1402, 1500, 1600, 1601, 2800, and 2900. This map is for the purpose of identifying the location of the water rights only and is not intended to provide legal dimensions or locations of property ownership lines.

T-9726