

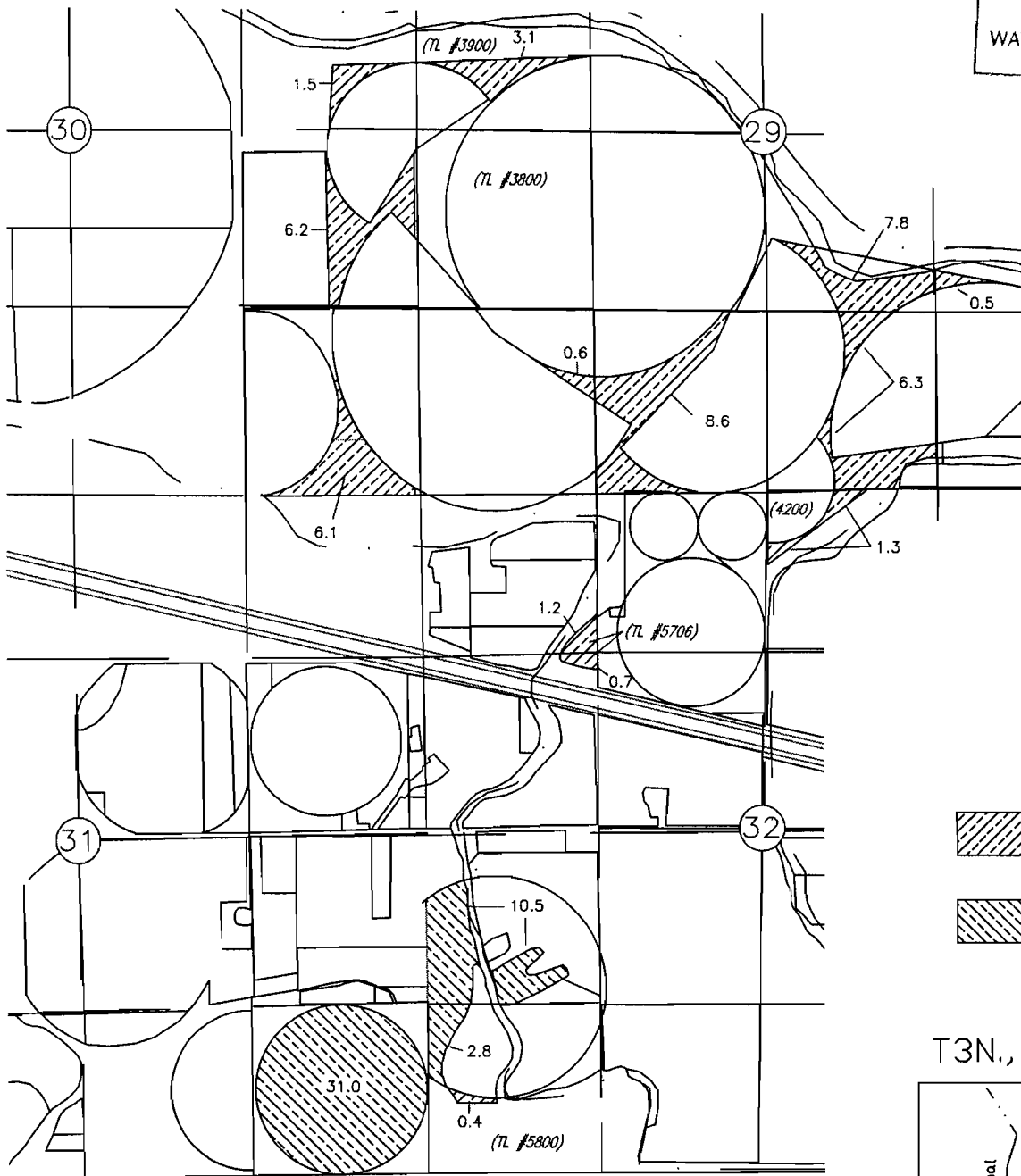
2004 WESTLAND IRRIGATION DISTRICT 540.580 TRANSFER BETZ & BOETTCHER TO BOETTCHER April 1961, Cert. 76799

RECEIVED

MAY 10 2004

WATER RESOURCES DEPT
SALEM, OREGON

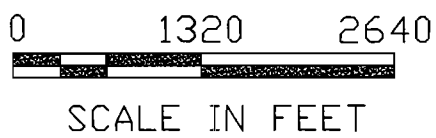
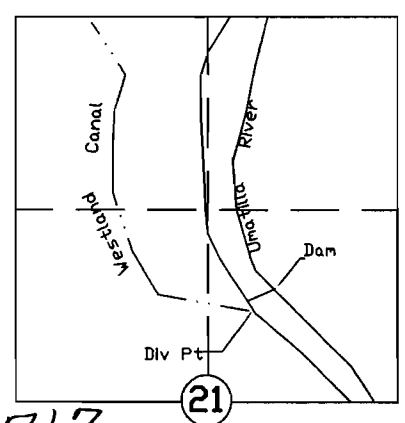
T4N., R28E., W.M.



1961 FROM

1961 TO

T3N., R 29E., W.M.



NOTE: THE PURPOSE OF THIS MAP IS TO IDENTIFY THE APPROXIMATE LOCATION OF THE WATER RIGHT. IT IS NOT INTENDED TO PROVIDE INFORMATION RELATIVE TO THE LOCATION OF PROPERTY OWNERSHIP BOUNDARY LINES.

T-9717