

T. 6 S., R. 38 E., W.M.

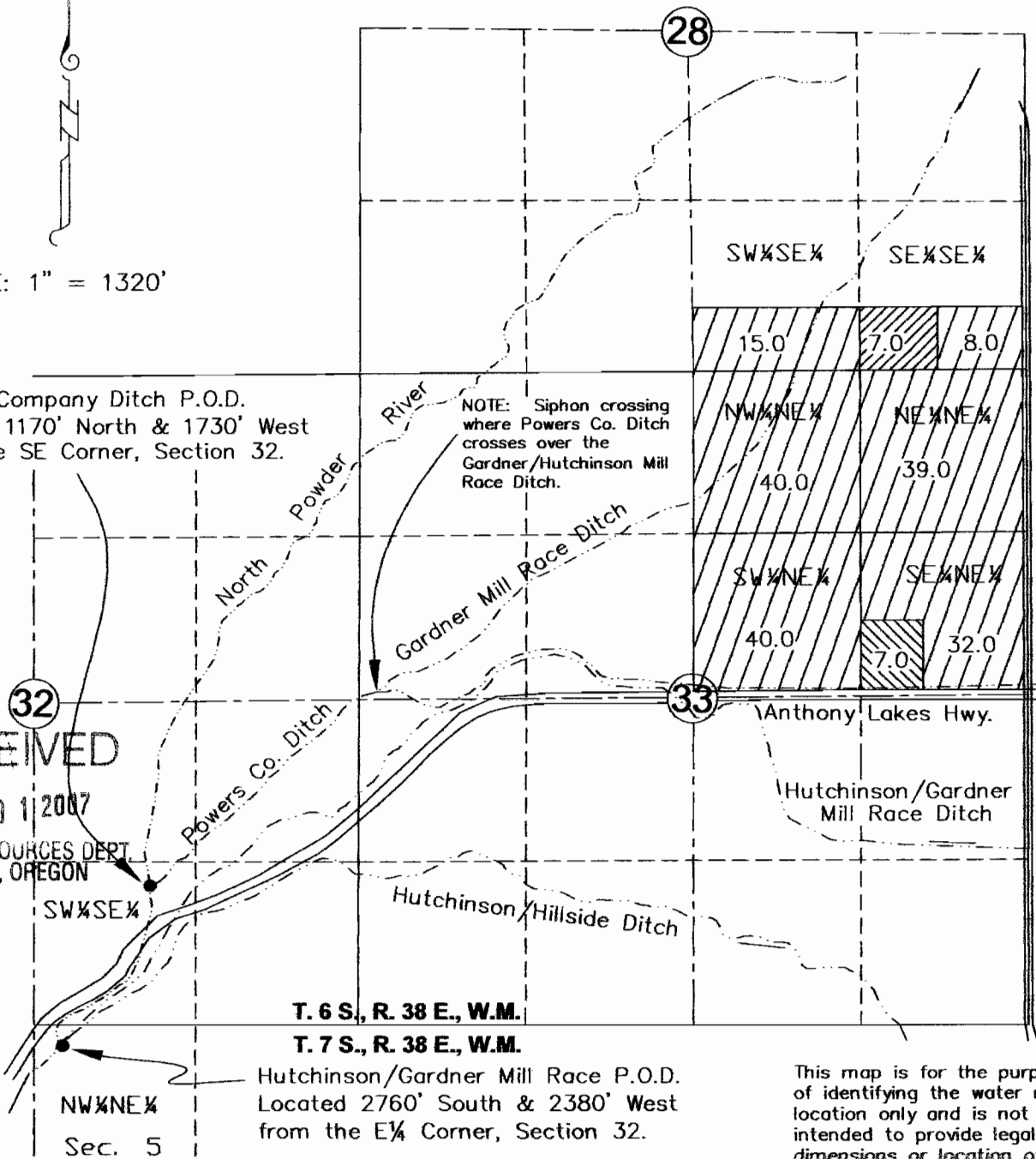


SCALE: 1" = 1320'

Powers Company Ditch P.O.D.  
Located 1170' North & 1730' West  
from the SE Corner, Section 32.

NOTE: Siphon crossing  
where Powers Co. Ditch  
crosses over the  
Gardner/Hutchinson Mill  
Race Ditch.

RECEIVED  
OCT 01 2007  
WATER RESOURCES DEPT.  
SALEM, OREGON






T. 6 S., R. 38 E., W.M.

T. 7 S., R. 38 E., W.M.

Hutchinson/Gardner Mill Race P.O.D.  
Located 2760' South & 2380' West  
from the E 1/4 Corner, Section 32.

This map is for the purpose  
of identifying the water right  
location only and is not  
intended to provide legal  
dimensions or location of  
property ownership lines.

-  Lands Irrigated with 1874 Priority
-  Lands Irrigated with 1881 Priority
-  Remaining Rights (1881 Priority)

FINAL PROOF SURVEY

In Name of

Peter W. Schoeningh

Reference: T-9714

Site Survey May 31, 2005

by Hanley Engineering, Inc.

HANLEY ENGINEERING, INC.  
2043 MAIN STREET  
BAKER CITY, OREGON

