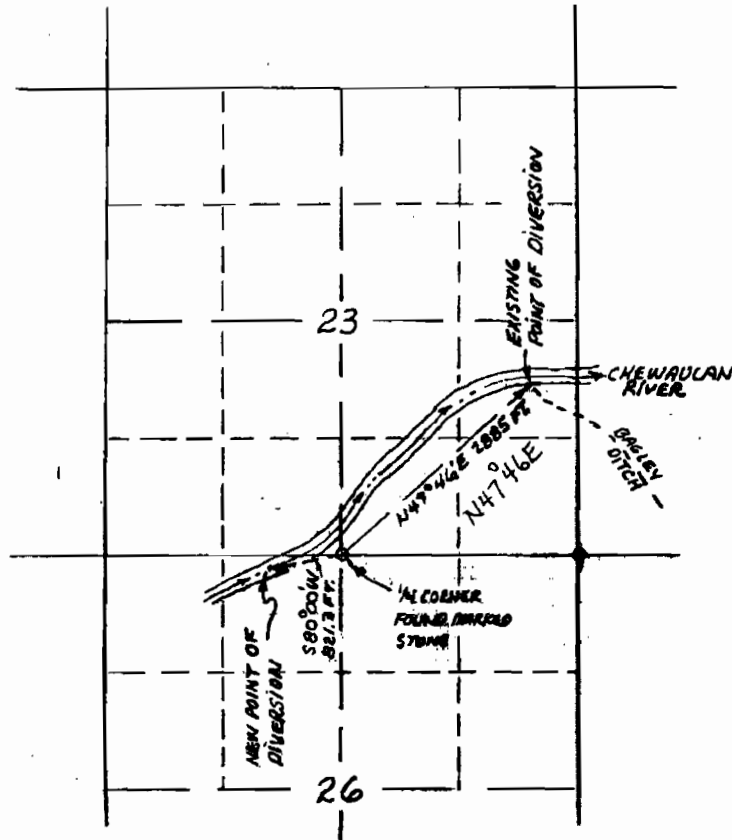
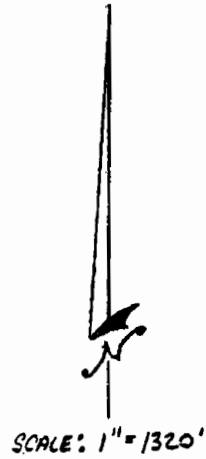
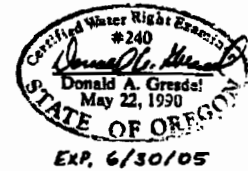


MAP TO ACCOMPANY APPLICATION
 FOR
 TRANSFER OF POINT OF DIVERSION
 FOR
 BAGLEY DITCH
 IN
 NE 1/4 SE 1/4 SEC. 23 AND NE 1/4 NW 1/4 SEC. 26, T33S R18E, W.11.

FOR: J-SPEAR RANCH CO.
 APRIL, 2004
 BY: DONALD A. GRESDEL, CWRE No. 240



EXISTING POINT OF DIVERSION
 LIES IN TAX LOT 3318-00000-1200
 IN NE 1/4 SE 1/4, SECTION 23

NEW POINT OF DIVERSION LIES IN
 TAX LOT 3318-00000-2101
 IN NE 1/4 NW 1/4, SECTION 26

RECEIVED

MAY 26 2004

WATER RESOURCES DEPT
 SALEM, OREGON

T-9733