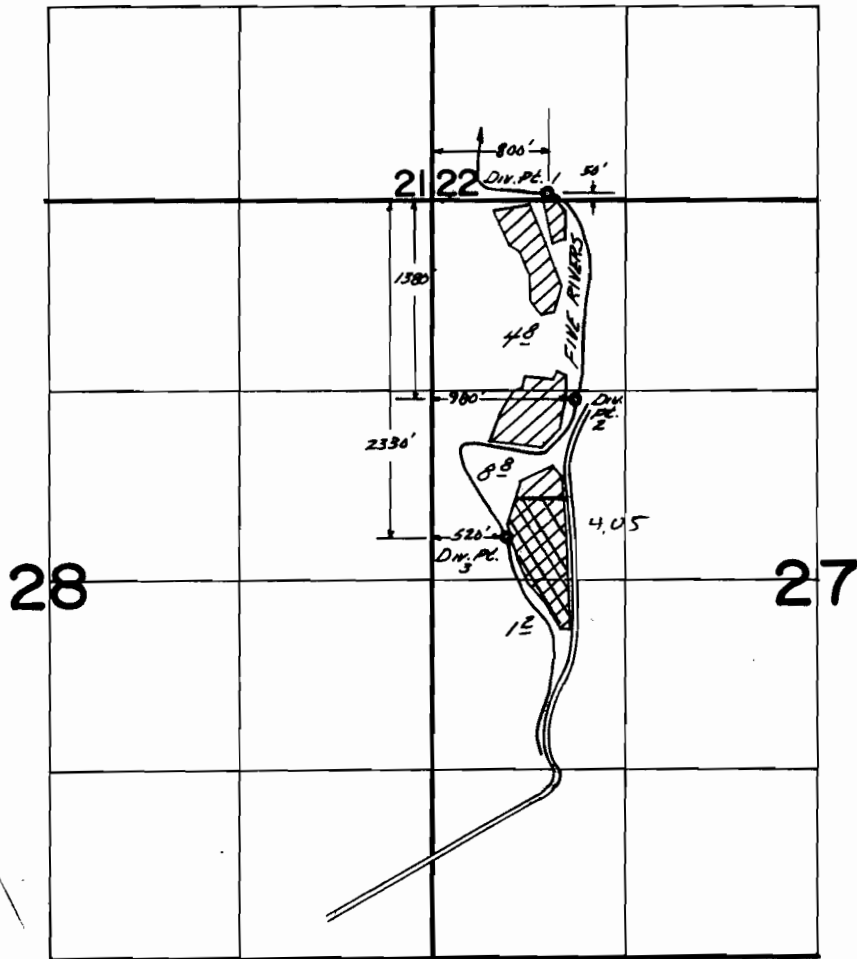


From

T. 15S, R. 9W. W.M.



FINAL PROOF SURVEY
UNDER

RECEIVED

JUL 30 2004

WATER RESOURCES DEPT
SALEM, OREGON

Application No. 50843. Permit No. 38387....
IN NAME OF

.....PRINDEL CREEK FARM INC.....

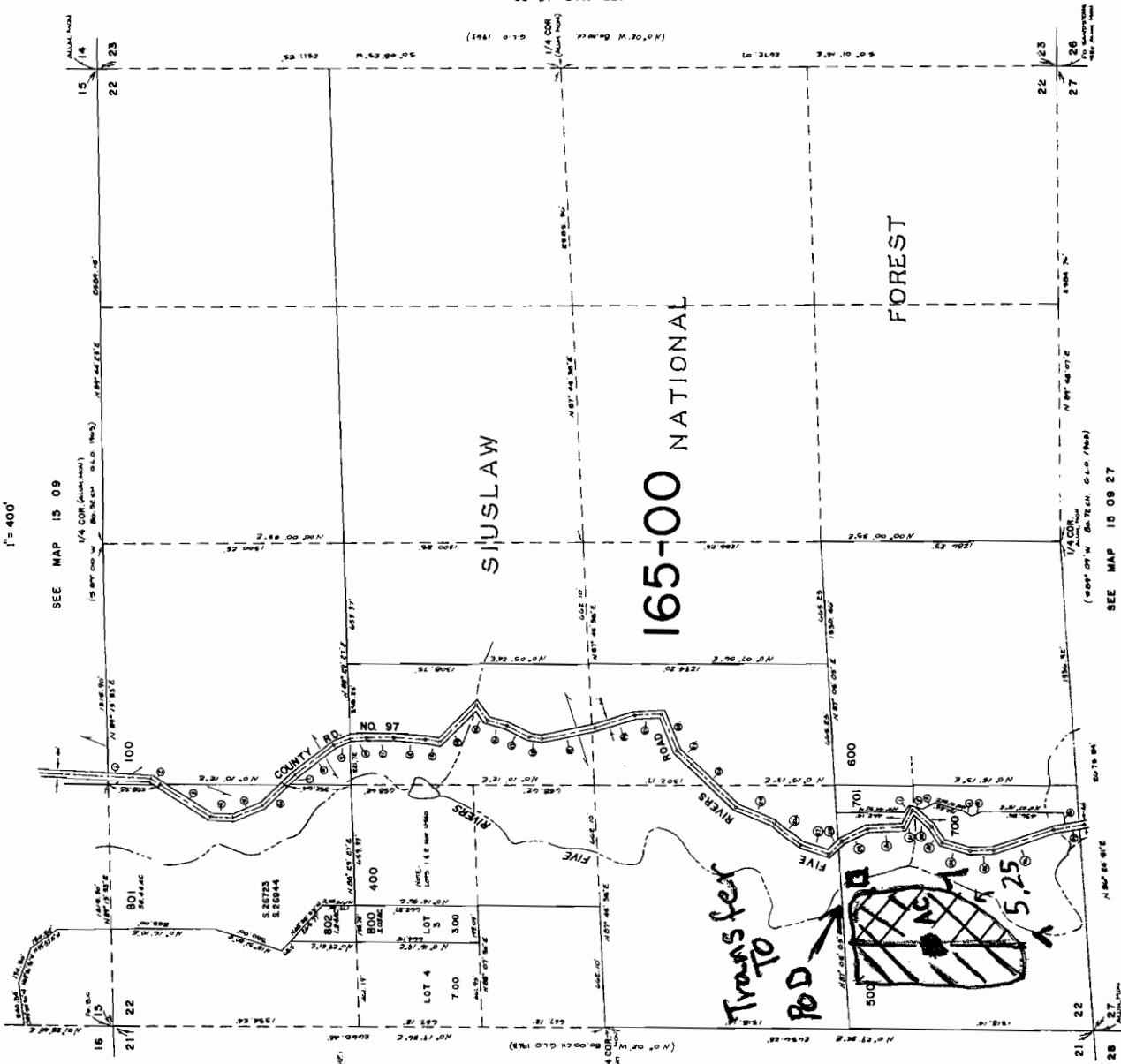
Surveyed Aug...8... 1979., by S.C. BROWN.....

70

976

Section 22 T. 15S. R. 9 W.W.M.
LANE COUNTY
1" = 400'

15 09 22



SEE MAP 15 09

SEE MAP 15 09

SEE MAP 15 09

- S. FIVE RIVERS RD.
- 1. 1.1114
- 2. 1.1114
- 3. 1.1114
- 4. 1.1114
- 5. 1.1114
- 6. 1.1114
- 7. 1.1114
- 8. 1.1114
- 9. 1.1114
- 10. 1.1114
- 11. 1.1114
- 12. 1.1114
- 13. 1.1114
- 14. 1.1114
- 15. 1.1114
- 16. 1.1114
- 17. 1.1114
- 18. 1.1114
- 19. 1.1114
- 20. 1.1114
- 21. 1.1114
- 22. 1.1114
- 23. 1.1114
- 24. 1.1114
- 25. 1.1114
- 26. 1.1114
- 27. 1.1114
- 28. 1.1114
- 29. 1.1114
- 30. 1.1114
- 31. 1.1114
- 32. 1.1114
- 33. 1.1114
- 34. 1.1114
- 35. 1.1114
- 36. 1.1114
- 37. 1.1114
- 38. 1.1114
- 39. 1.1114
- 40. 1.1114

- 41. 1.1114
- 42. 1.1114
- 43. 1.1114
- 44. 1.1114
- 45. 1.1114
- 46. 1.1114
- 47. 1.1114
- 48. 1.1114
- 49. 1.1114
- 50. 1.1114
- 51. 1.1114
- 52. 1.1114
- 53. 1.1114
- 54. 1.1114
- 55. 1.1114
- 56. 1.1114
- 57. 1.1114
- 58. 1.1114
- 59. 1.1114
- 60. 1.1114

↑ North

RECEIVED

JUL 30 2004

WATER RESOURCES DEPT
SALEM, OREGON

15 09 22