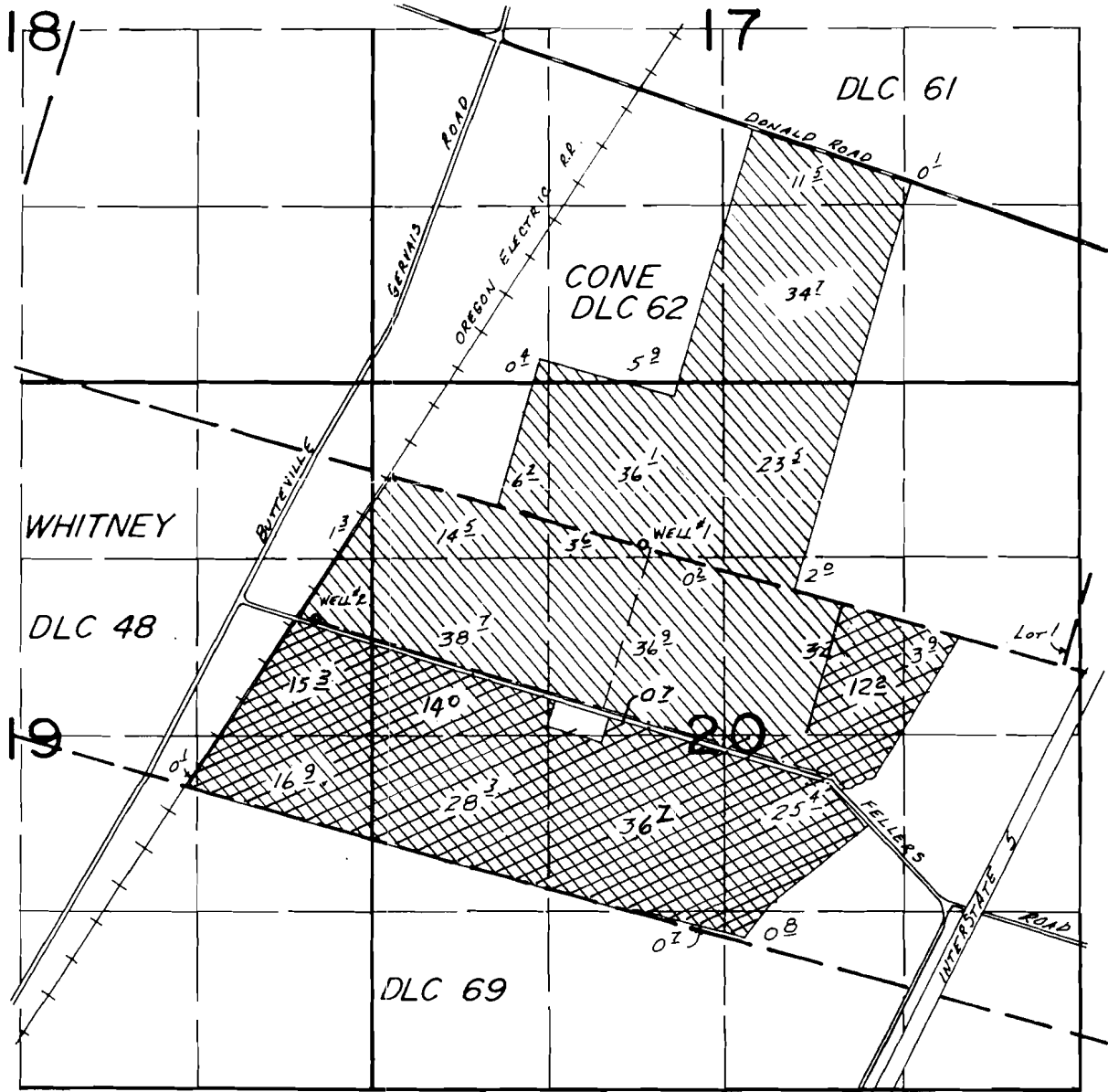


T. 4S., R. 1W., W.M.



WELLS LOC: #1- 900'N. & 3150'W., #2- 370'N. & 5620'W., BOTH FROM SE COR. CONE DLC 62.

Receiving lands for Earl Stoller's Transfer No

FINAL PROOF SURVEY
UNDER

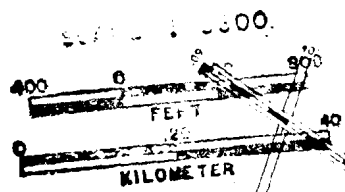
RECEIVED

JUN 12 2000

Application No. G-9124 Permit No. G-8443
 G-10015 G-9150
IN NAME OF

NORMAN REILING

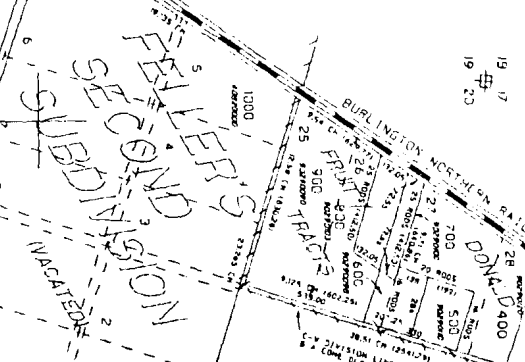
Surveyed Sept. 29, 1983, by L. M. TOLL



SEE MAP 04 IN 19A

19
17
19
23

SEE MAP 04 IN 19



015 00 06 0

1398000
570000

015 00 03 0

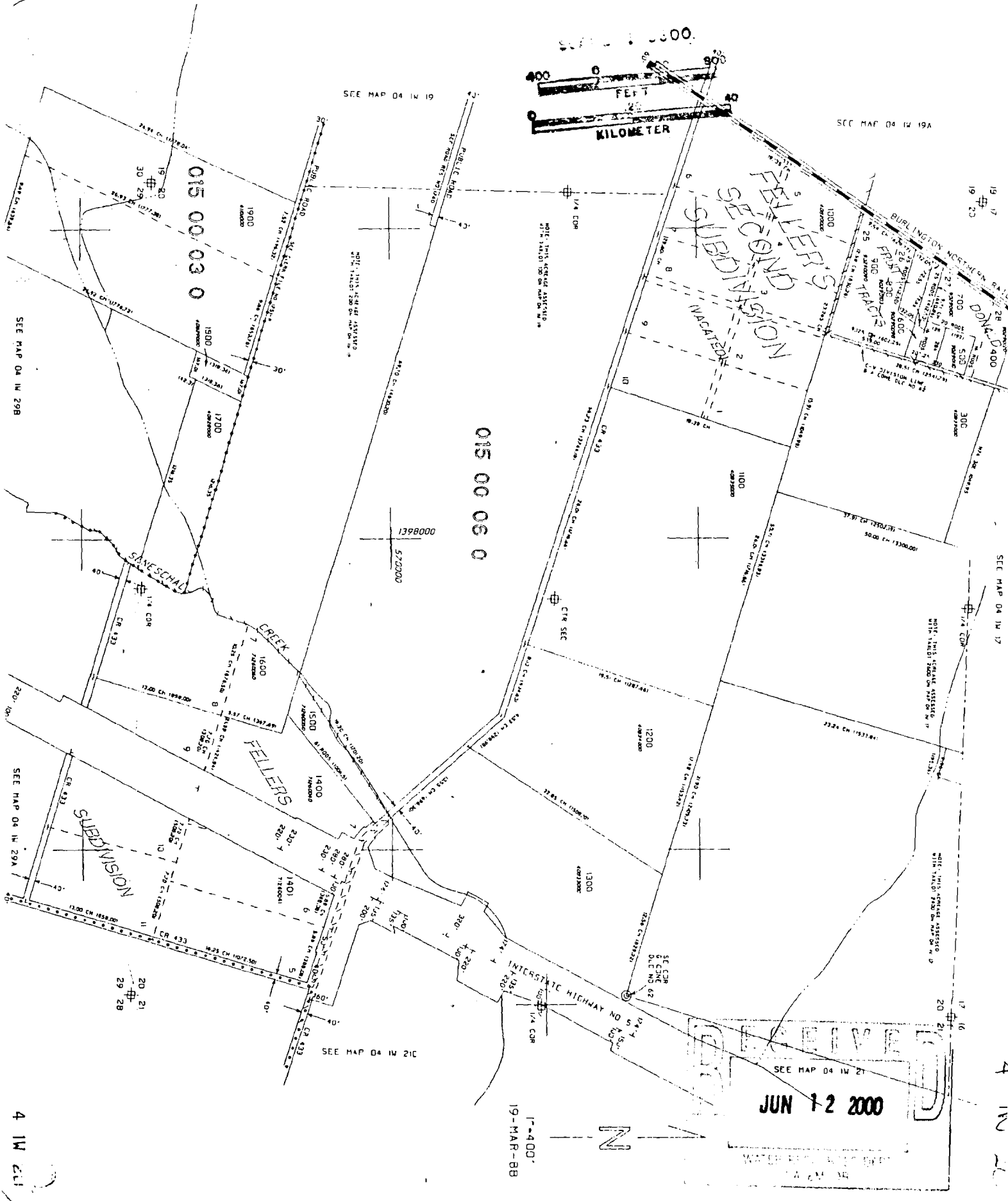
SEE MAP 04 IN 29B

SEE MAP 04 IN 17

SEE MAP 04 IN 29A

4 IN 21

4 IN 20



JUN 12 2000

1"=400'
19-MAR-88

WATER RIGHTS...
1/4 COR