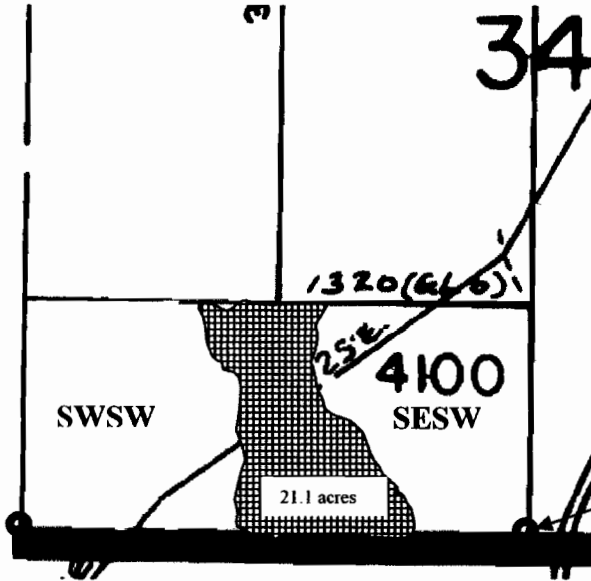


SE SW ¼ of Section
34, T22S, R10E



SWSW 10.1 acres
SESW 10.0 acres

South center marker of section 34, T22S, R10E

Surface Water Right Map For Emmett Ranch, LLC

Certificate 72196, Priority 1900

RECEIVED

DEC 22 2004

WATER RESOURCES DEPT
SALEM, OREGON



Place of Use



Approximate Marker Location

T22S R10E Section 34, SE & SW¼, SW ¼, Tax Lot 4100

1 inch equals 1000 feet

November 2, 2004

Deschutes Irrigation, LLC

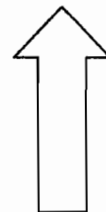
P.O. Box 1830

Bend, OR 97709

541-322-9528

shortsales@usa.com

NORTH



T-9835 Map-2a