

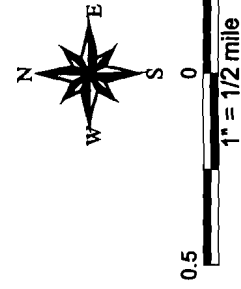
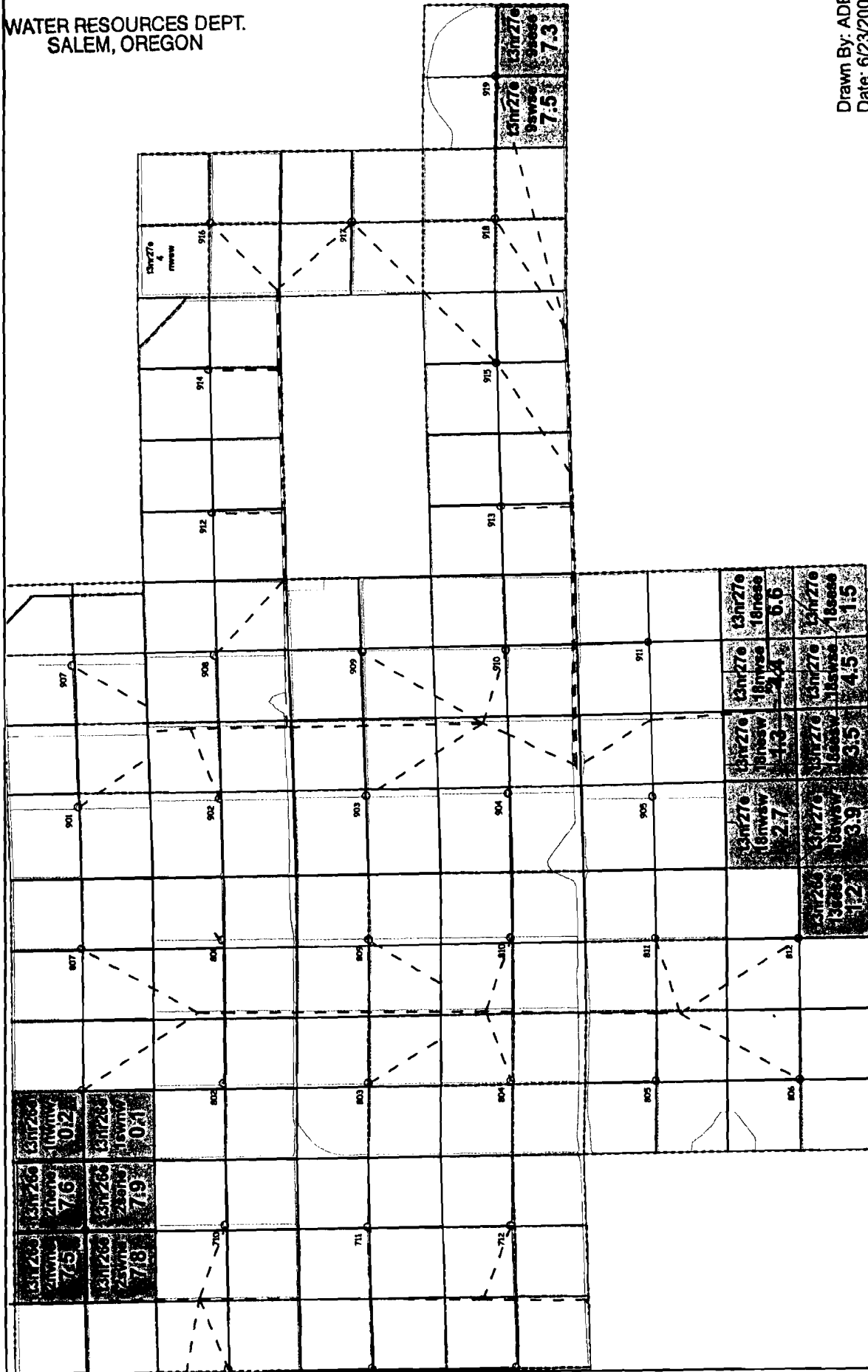
RECEIVED

AUG 14 2000

T-8579

WATER RESOURCES DEPT.
SALEM, OREGON

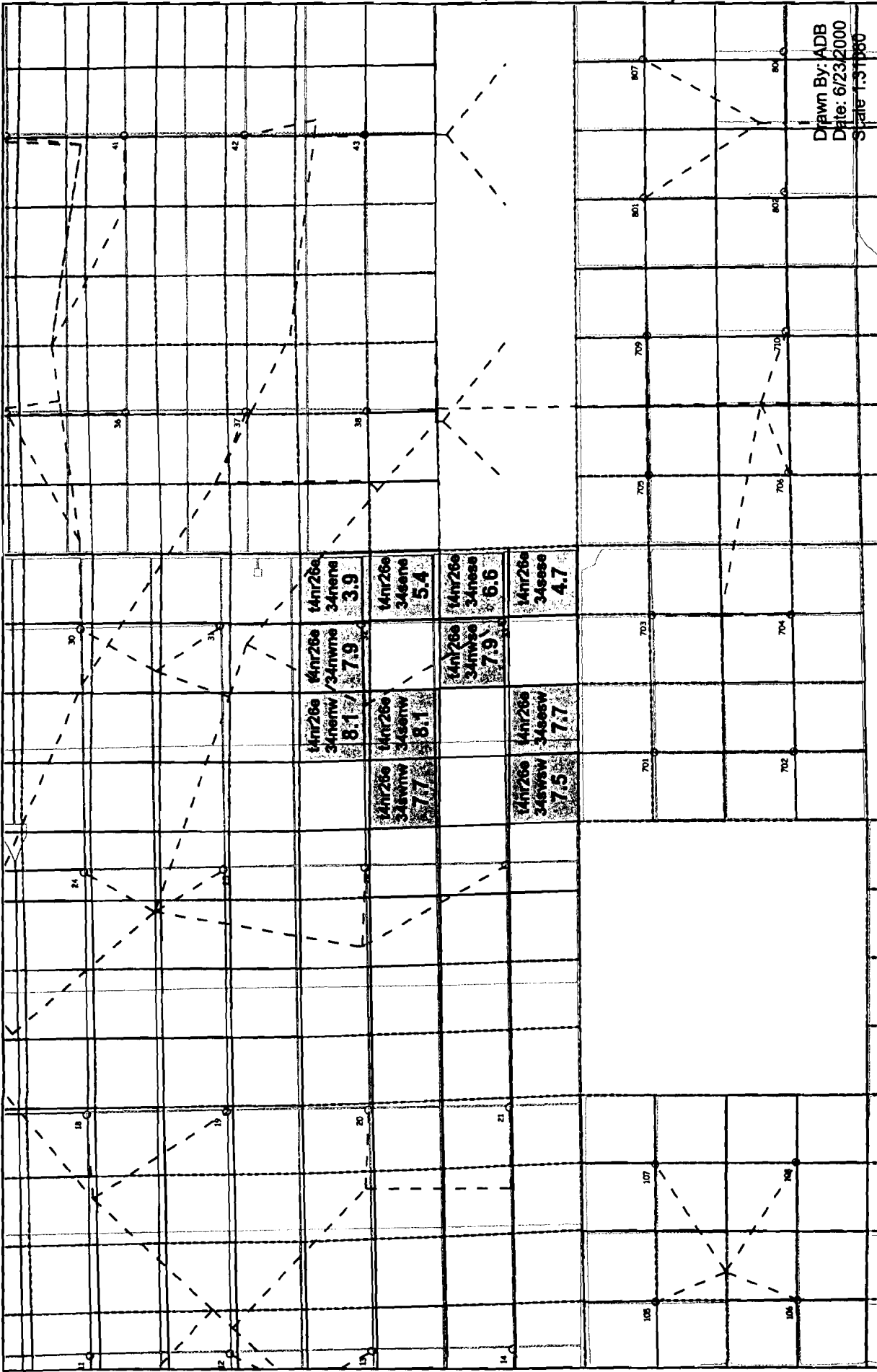
Drawn By: ADB
Date: 6/23/2000
Scale 1:31680



Potlatch Corporation
 Hybrid Poplar Program
 Water Right Transfer "To" Map
 Certificate 74193
 Township 3 North
 Range 26 Sections 1, 2, and 13
 Range 27 Sections 9, and 18

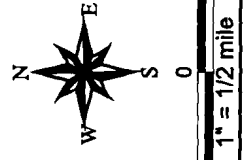
- Quarter Quarter Section Lines
- Water Mainlines
- Distribution Manifolds
- Asbuilt Area
- Quarter Quarter Section Location
- To Acres

T-8579



Drawn By: ADB
Date: 6/23/2000
Scale: 1"=100'

Potlatch Corporation
Hybrid Poplar Program
Water Right Transfer "From" Map
Certificate 74193
Township 4 North
Range 26 Section 34



- Quarter Quarter Section Lines
- Water Mainlines
- Distribution Manifolds
- Asbuilt Area

Quarter Quarter Section Location
"From" Acres

