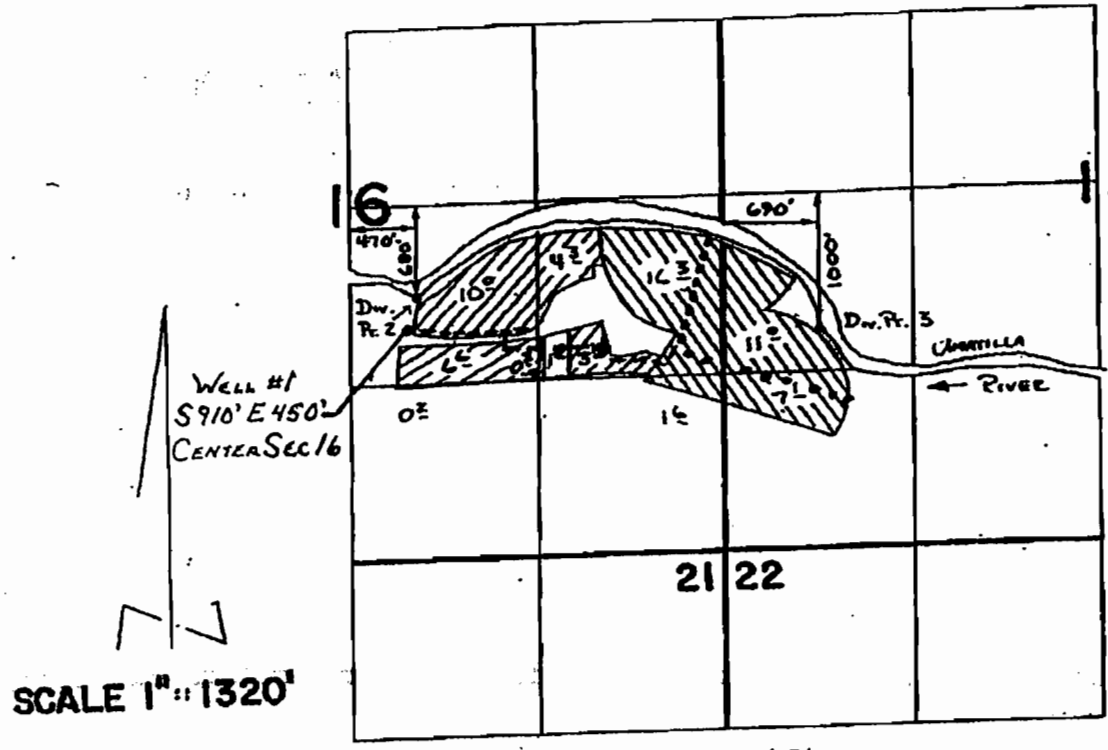


G-15796

T. 2N., R. 31E., W.M.

RECEIVED  
APR 08 2004  
WATER RESOURCES DEPT  
SALEM, OREGON

RECEIVED  
APR 25 2005  
WATER RESOURCES DEPT  
SALEM, OREGON



36A-1904      17.48-1951      7.1Ac-1953

PROPOSED PLACE OF USE

	T-5773 Dw. Pr. 3		T-5774 Dw. Pr. 2		T-5794 Dw. Pr. 2
Umatilla River Decree		Permit S-20389		Permit S-22288	
Old C#35280		Old C#21304		Old C#21343	

8" MAIN LINE - - - - -

6" MAIN LINE . . . . .

TOTAL ACREAGE 60.58

\*\* Above acres also covered by S-7400, supplemental McKay Storage right. No certificate has been issued yet.

MAP T2N, R 31E, W.M.

SECTION 15  
NW 1/4, SW 1/4  
SW 1/4, SW 1/4

SECTION 16  
SE 1/4

ALL IN TAX LOT 3400

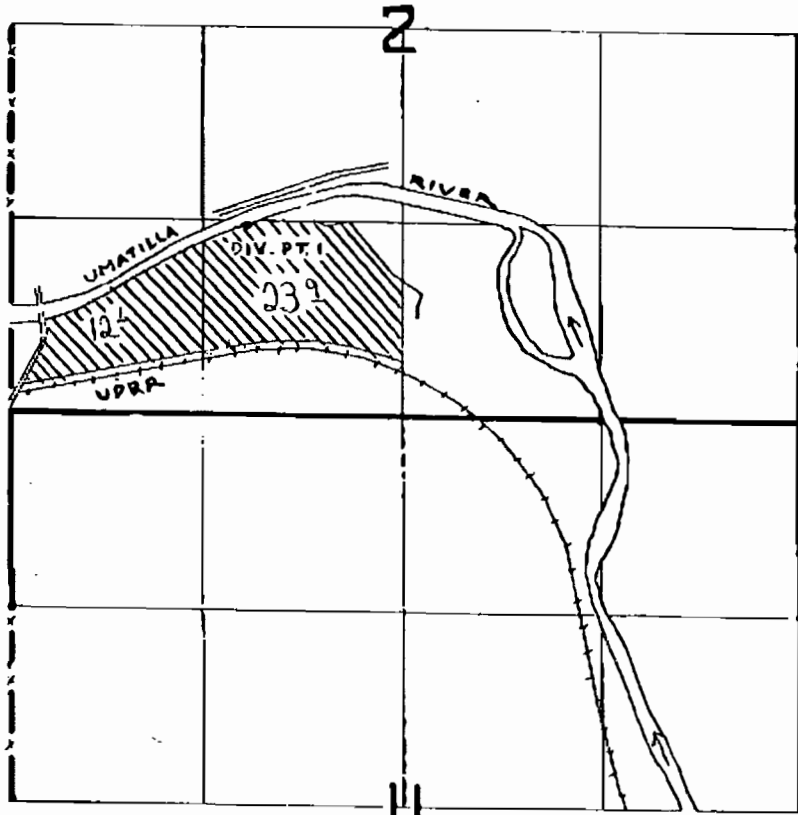
T-9915

Application No. G-16225  
Permit No. G-15796


04/26/05 01:26P P.004

T. 2N. R. 30E. W.M.

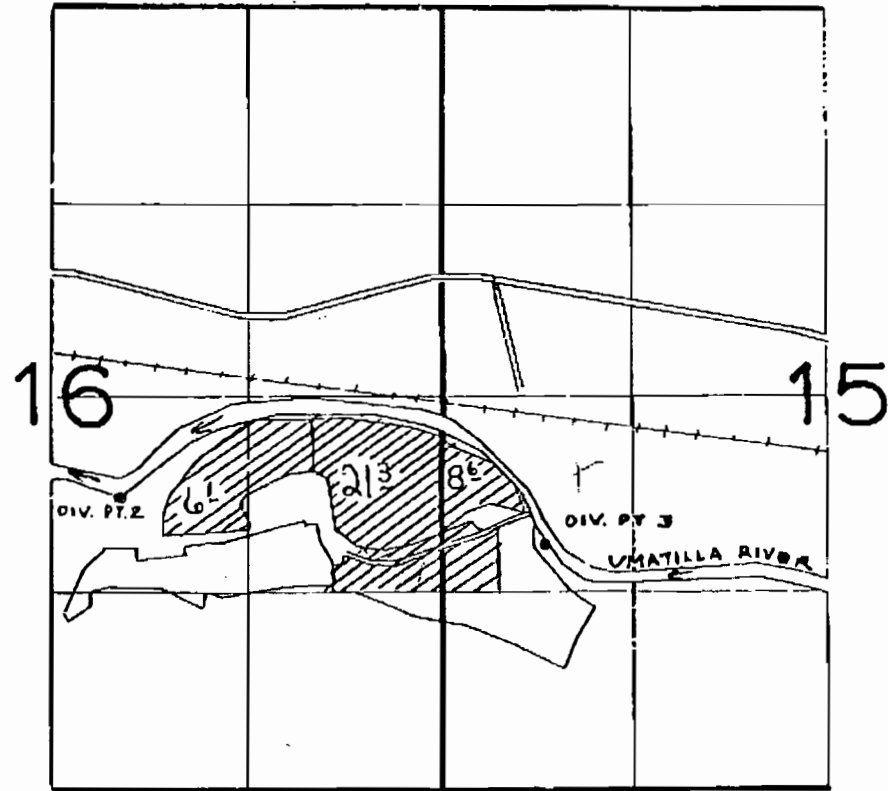
T. 2N. R. 31E. W.M. <sup>T-51''</sup>




DIV. PT. 1 LOC. 1300' N & 1050' W FROM S 1/4 COR. SEC. 2

From 

RECEIVED  
MAY 11 1986  
WATER RESOURCES DEPT  
SILENT CANYON



DIV. PT. 2 LOC. 680' S & 2180' W FROM E 1/4 COR. SEC. 1  
DIV. PT. 3 LOC. 1010' S & 720' E FROM W 1/4 COR. SEC. 15

To 

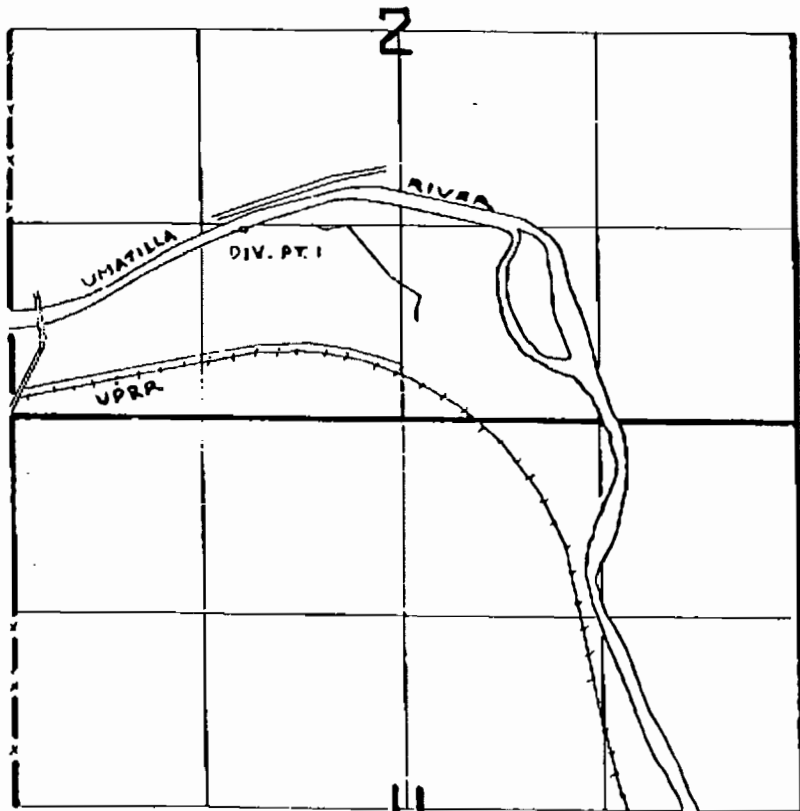
T-99/5

T. 2N. R. 30E. W.M.

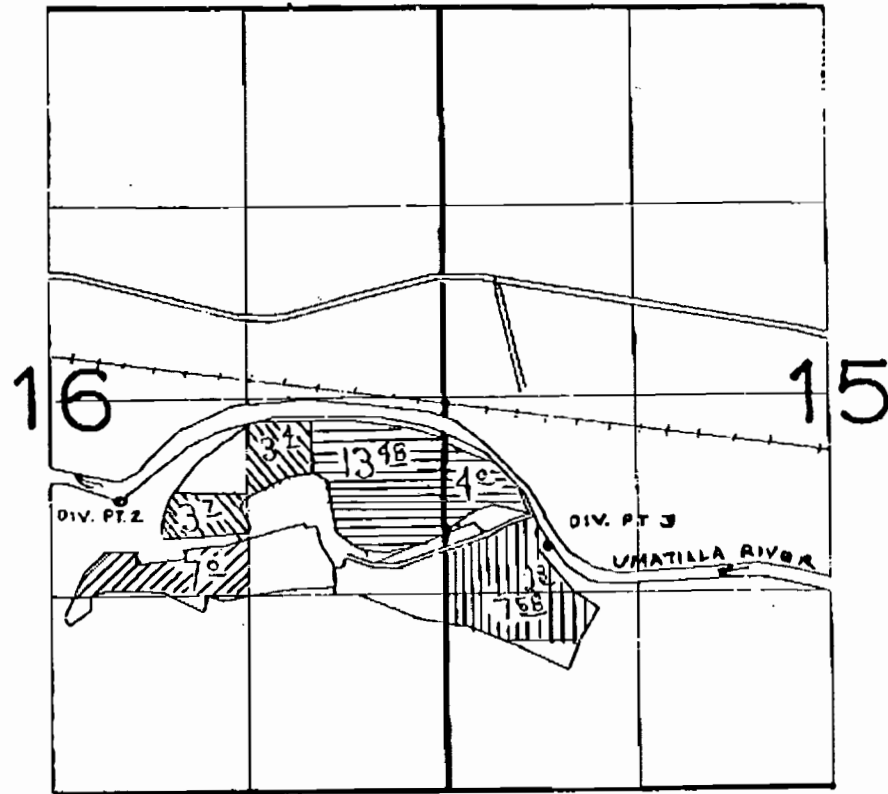
T-5774

T. 2N. R. 31E. W.M.

04/26/05 01:26P P.003



DIV. PT. 1 LOC. 1300' N & 1030' W FROM S 1/4 COR. SEC. 2



DIV. PT. 2 LOC. 680' S & 2180' W FROM E 1/4 COR. SEC. 16  
DIV. PT. 3 LOC. 1010' S & 720' E FROM W 1/4 COR. SEC. 15

Permit 22288

Permit 20389

RECEIVED

MAR 11 1986

WATER RESOURCES DEPT  
SALEM, OREGON

From [diagonal hatching]

From [horizontal hatching]

To [diagonal hatching]

To [vertical hatching]

T-9915

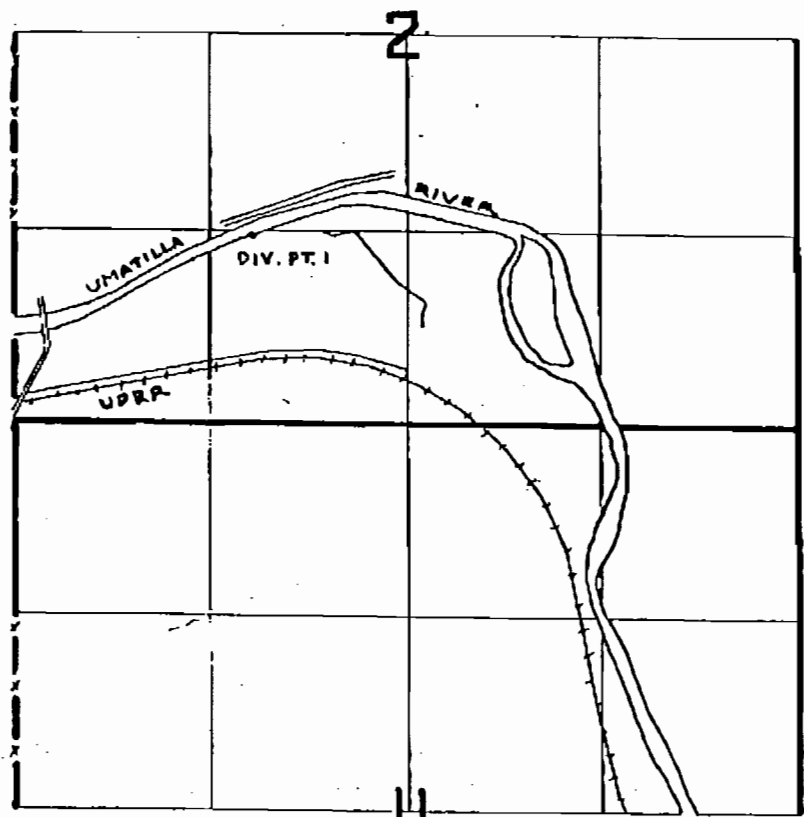
T-5794

T. 2N. R. 30E. W.M.

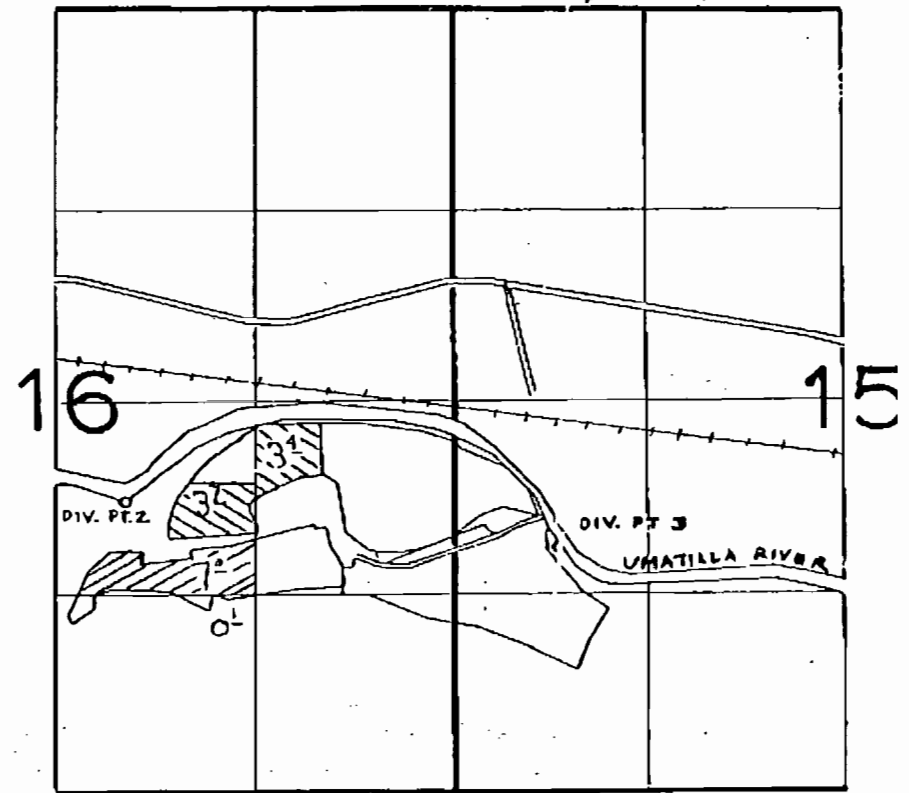
T. 2N. R. 31E. W.M.

04/26/05 01:26P P.002

T-5794



DIV. PT. 1 LOC. 1300' N & 1090' W FROM S 1/4 COR. SEC. 2



DIV. PT. 2 LOC. 680' S & 2180' W FROM E 1/4 COR. SEC. 16  
DIV. PT. 3 LOC. 1010' S & 720' E FROM W 1/4 COR. SEC. 17

VED  
 MAY 17 1986  
 WATER RESOURCES DEPT  
 SEASIDE BRANCH

Permit 22289  
 From [diagonal hatching symbol]  
 To [diagonal hatching symbol]

T-9915