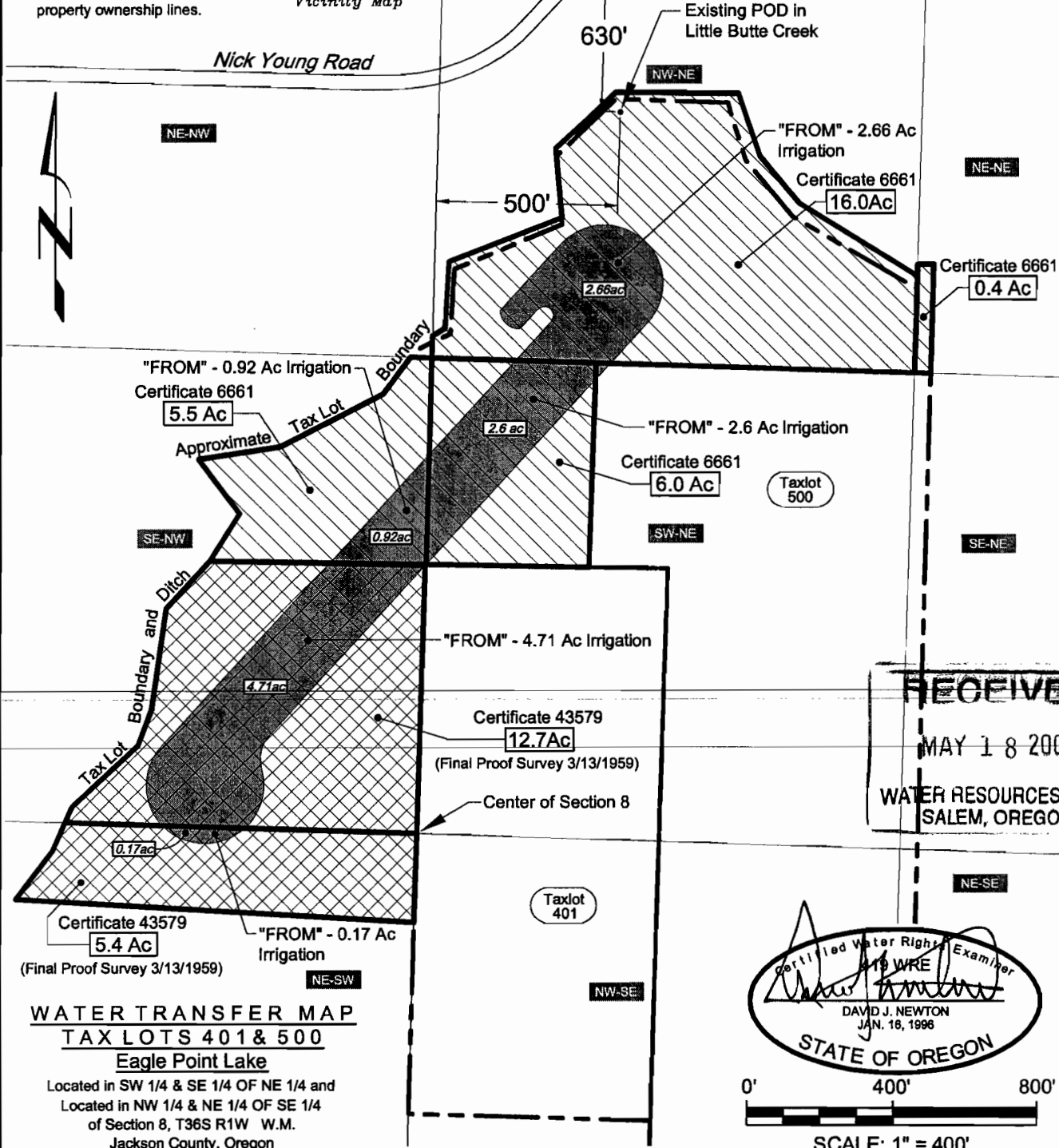
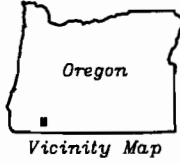


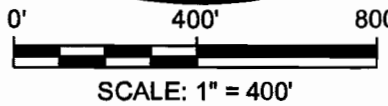
NOTES

1. This map was prepared for the purpose of identifying the location of water rights only and is not intended to provide legal dimensions or locations of property ownership lines.



RECEIVED
MAY 18 2005
WATER RESOURCES DEPT
SALEM, OREGON

Certified Water Rights Examiner
DAVID J. NEWTON
JAN. 18, 1998
STATE OF OREGON



WATER TRANSFER MAP
TAX LOTS 401 & 500
Eagle Point Lake
Located in SW 1/4 & SE 1/4 OF NE 1/4 and
Located in NW 1/4 & NE 1/4 OF SE 1/4
of Section 8, T36S R1W W.M.
Jackson County, Oregon

NEWTON
CONSULTANTS INC.
Earth, Water and Rock Specialists
Ph: 503 742-1800 Fax: 503 742-1801

Water Rights Change of Use Map
"FROM" Map
Eagle Point, Jackson County, Oregon

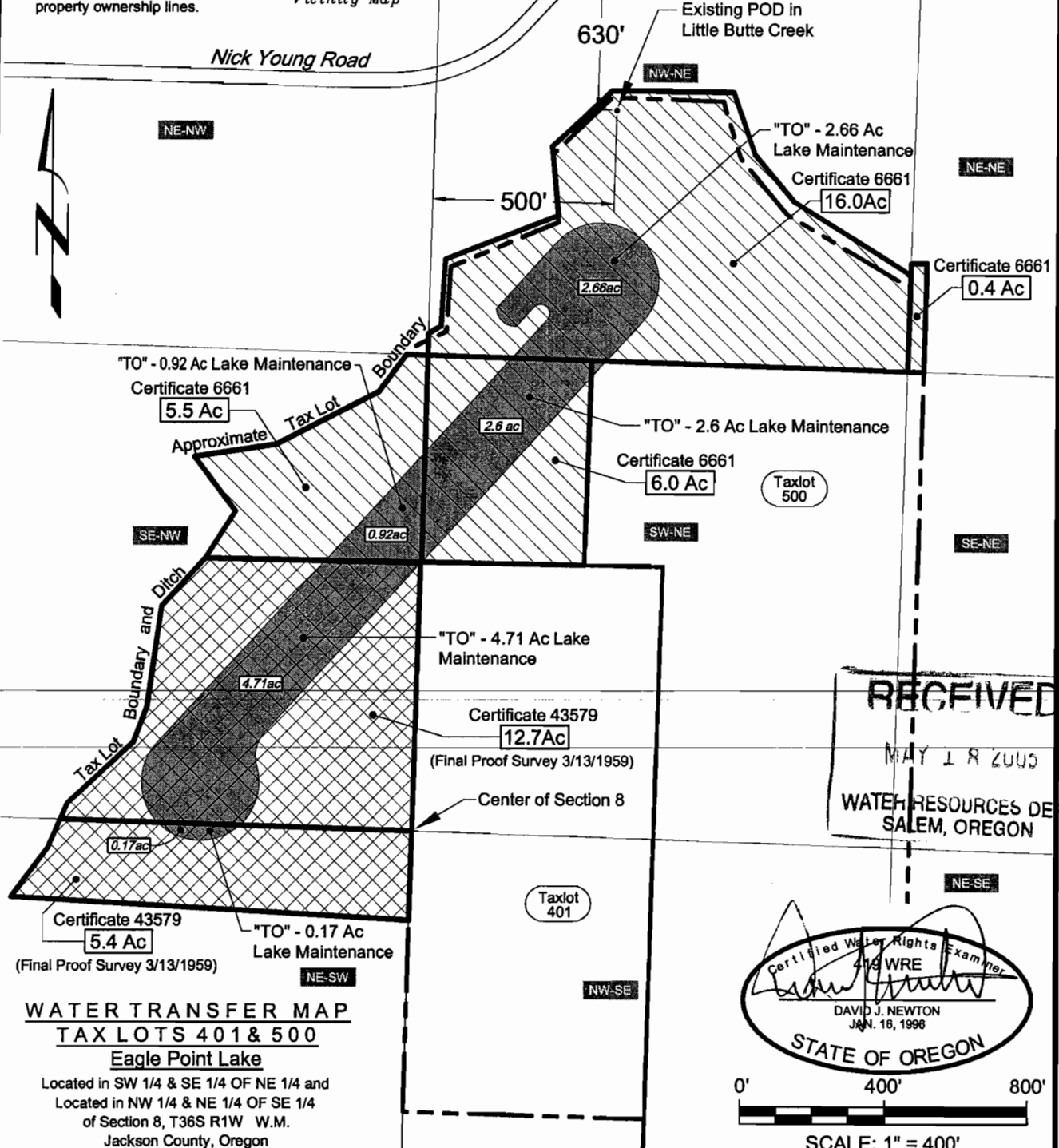
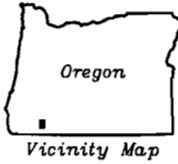
DESIGNED BY: D. Newton	DRAWN BY: S. Schenck	DATE: May 2005	PROJECT NO. 1012-101	FIGURE 1
----------------------------------	--------------------------------	--------------------------	--------------------------------	--------------------

T-9937

G:\1000\1012\101\Cad\Water\W1012101_F1_DN 10:44 05/16/2005 SS

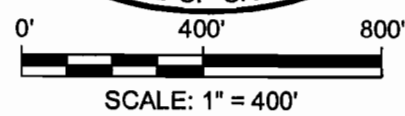
NOTES

1. This map was prepared for the purpose of identifying the location of water rights only and is not intended to provide legal dimensions or locations of property ownership lines.



RECEIVED
MAY 18 2005
WATER RESOURCES DEPT
SALEM, OREGON

Certified Water Rights Examiner
419 WRE
David J. Newton
DAVID J. NEWTON
JAN. 16, 1998
STATE OF OREGON



WATER TRANSFER MAP
TAX LOTS 401 & 500
Eagle Point Lake
Located in SW 1/4 & SE 1/4 OF NE 1/4 and
Located in NW 1/4 & NE 1/4 OF SE 1/4
of Section 8, T36S R1W W.M.
Jackson County, Oregon

NEWTON
CONSULTANTS INC.
Earth, Water and Rock Specialists
Ph: 503 742-1800 Fax: 503 742-1801

Water Rights Change of Use Map
"TO" Map
Eagle Point, Jackson County, Oregon

DESIGNED BY: D. Newton	DRAWN BY: S. Schenck	DATE: May 2005	PROJECT NO. 1012-101	FIGURE 2
----------------------------------	--------------------------------	--------------------------	--------------------------------	--------------------

T-9937

G:\1000\1012\101\Cad\Water\W1012101_F1_DN 10:44 05/16/2005 SS