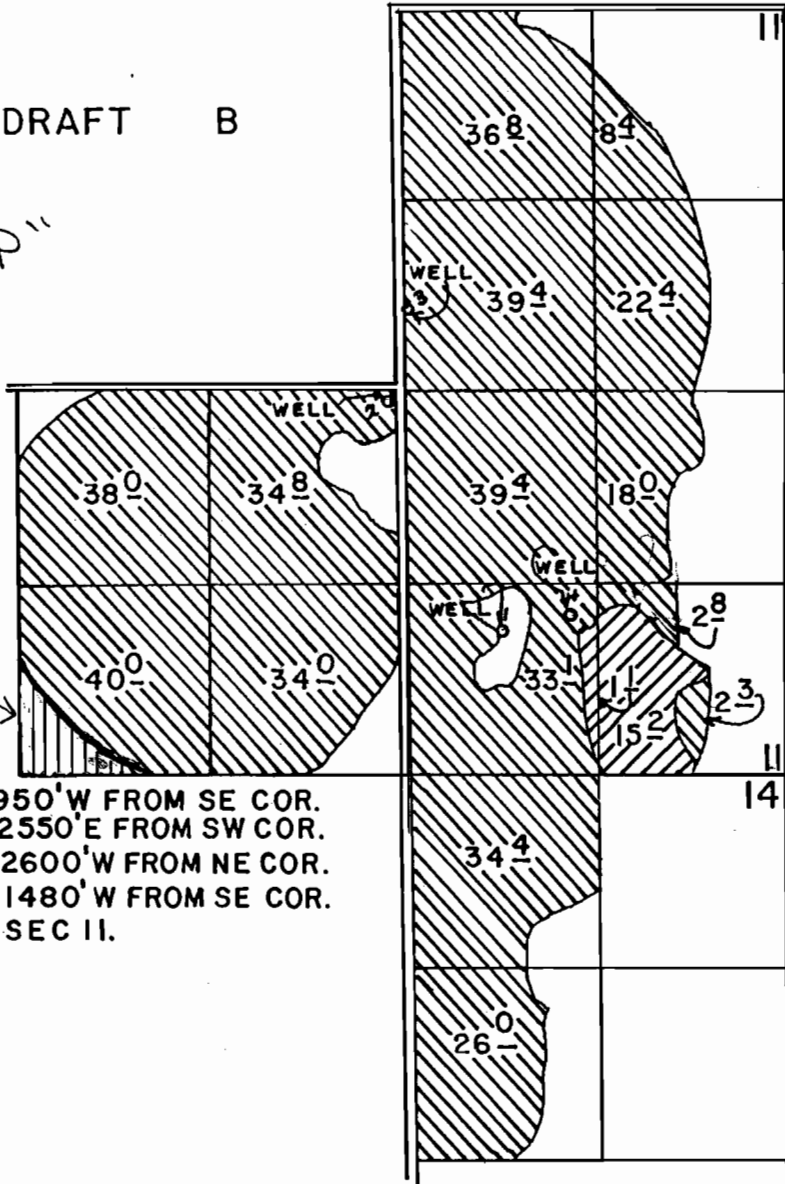


# T. 15 S., R. 14 E., W.M.

DRAFT B

"OFF MAP"

5<sup>2</sup>  
Acres →



WELL 1, LOC: 980' N & 1950' W FROM SE COR.  
 WELL 2, LOC: 2550' N & 2550' E FROM SW COR.  
 WELL 3, LOC: 2060' S & 2600' W FROM NE COR.  
 WELL 4, LOC: 1090' N & 1480' W FROM SE COR.  
 ALL IN SEC II.



**RECEIVED**

MAY 19 2005

WATER RESOURCES DEPT  
SALEM, OREGON

||||| - OFF Lands

SCALE: 1" = 1320'

PRIORITY DATE  
DEC. 11, 1978

## FINAL PROOF SURVEY

UNDER

Application No. G-9049 Permit No. G-8720  
 IN NAME OF



PRIMARY



SUPPLEMENTAL

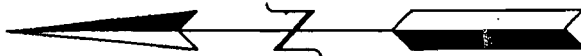
### WAMPLER-WERTH FARMS

Surveyed SEPT 13, 1984, by L.G. OLSEN

T-9936

C-68756

T-9936

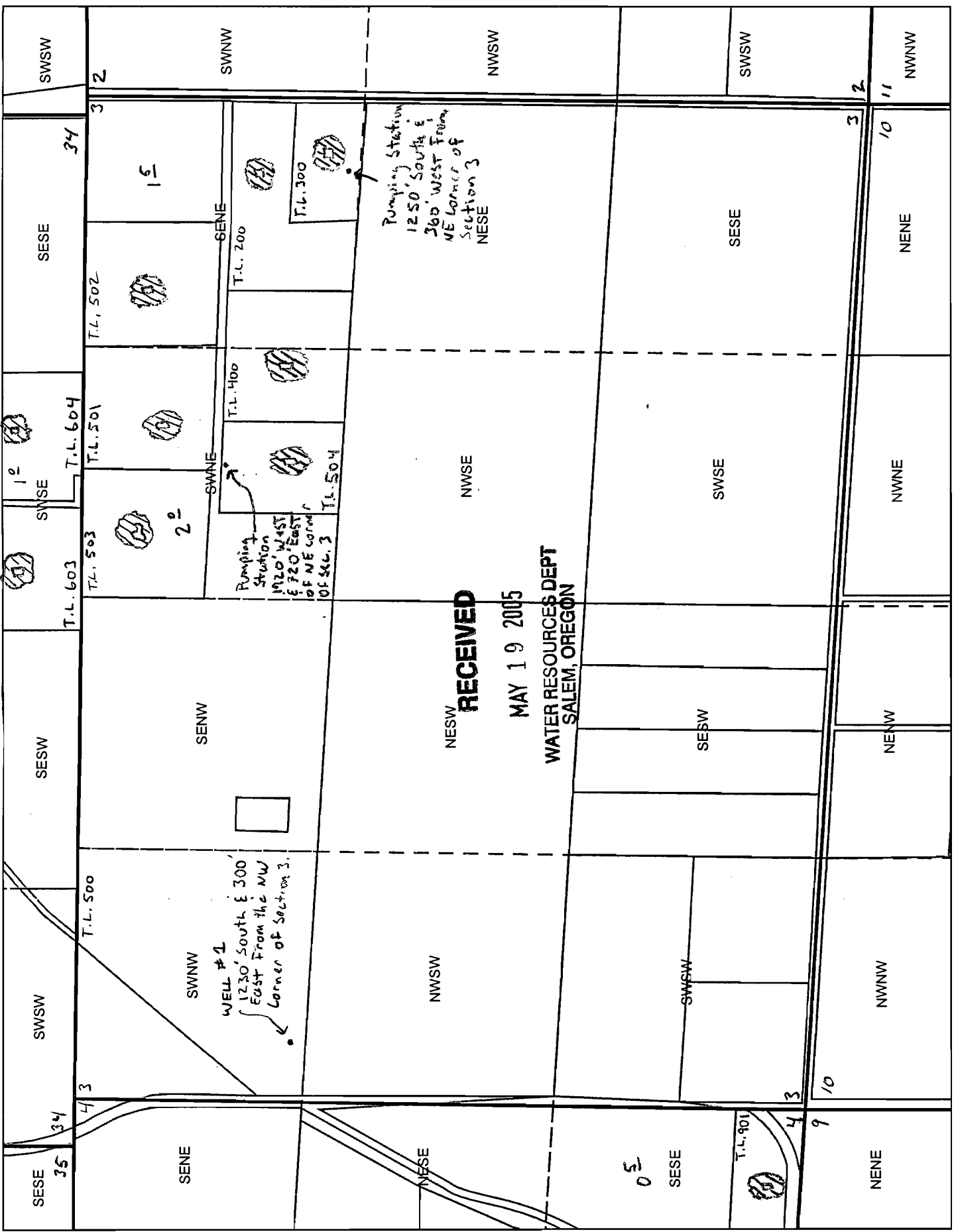


Proposed  
= Place of use

16S 14E Sec 3

"DN MAP"

1 inch equals 660 feet



**RECEIVED**  
MAY 19 2005  
WATER RESOURCES DEPT  
SALEM, OREGON