

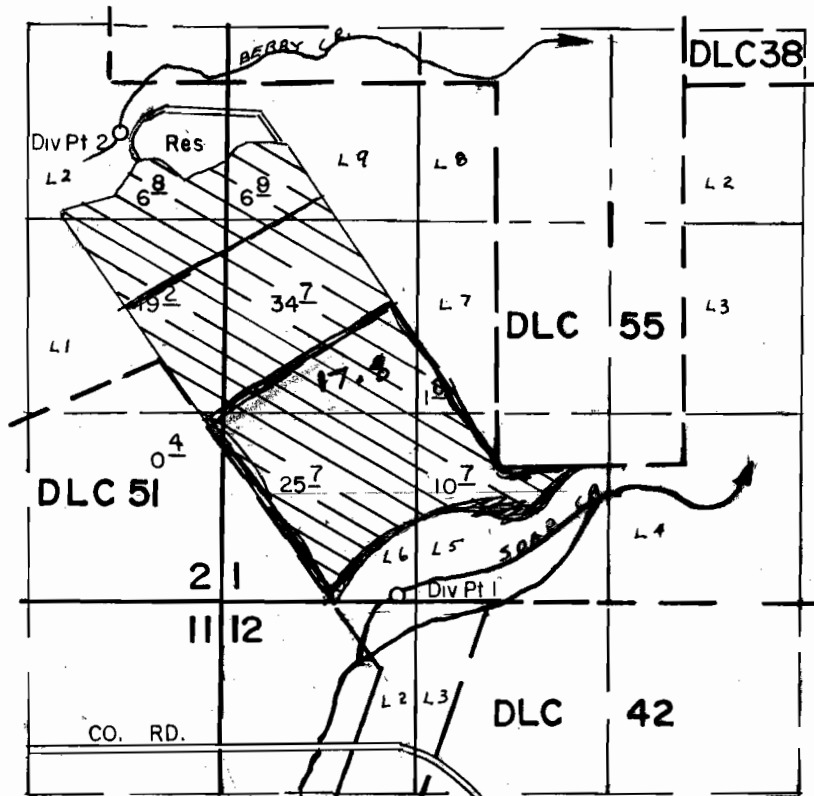
FROM MAP

RECEIVED

AUG 26 2005

**WATER RESOURCES DEPT
SALEM, OREGON**

T. 10S., R. 5W., W.M.



Div Pt 1 Located 50' N & 1200' E, Div Pt 2 Located 3200' N & 750' W,
Both From The SW Corner Section 1.

SCALE: 1" = 1320'

**FINAL PROOF SURVEY
UNDER**

R-59512 R-8167

Application No. 5.9513.... Permit No. 45016.....

IN NAME OF

.....**GYLAN MULKEY**.....

Surveyed MAY 5.... 1987...., by B.W. BISHOP.....

F9995

Polk County Scale Map

TO MAP



- Legend**
- Contours
 - Taxlot
 - Taxlot Arrows
 - Taxlot Boundary

RECEIVED

AUG 26 2005

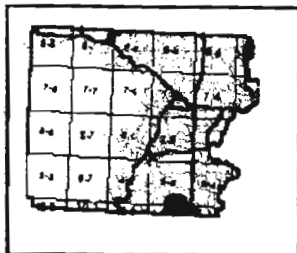
WATER RESOURCES DEPT
SALEM, OREGON

RECEIVED
SEP 30 2003



1 in. = 800 ft.

Vicinity



5122-1
T-9995

This map was produced using the Polk County GIS data. The GIS data is maintained by the county to support its governmental activities. The county is not responsible for map errors, omissions, misuse or misinterpretation.

9/22/03