

THIS MAP WAS PREPARED FOR  
ASSESSMENT PURPOSE ONLY

Section 30 T.2N. R.11E. W.M.

Hood River County

1" = 400'

T-8649

2N 11 30



**Map Symbol Legend**

- House
- Turnout Box
- property line
- open ditch

**Water Right Certificate Legend**

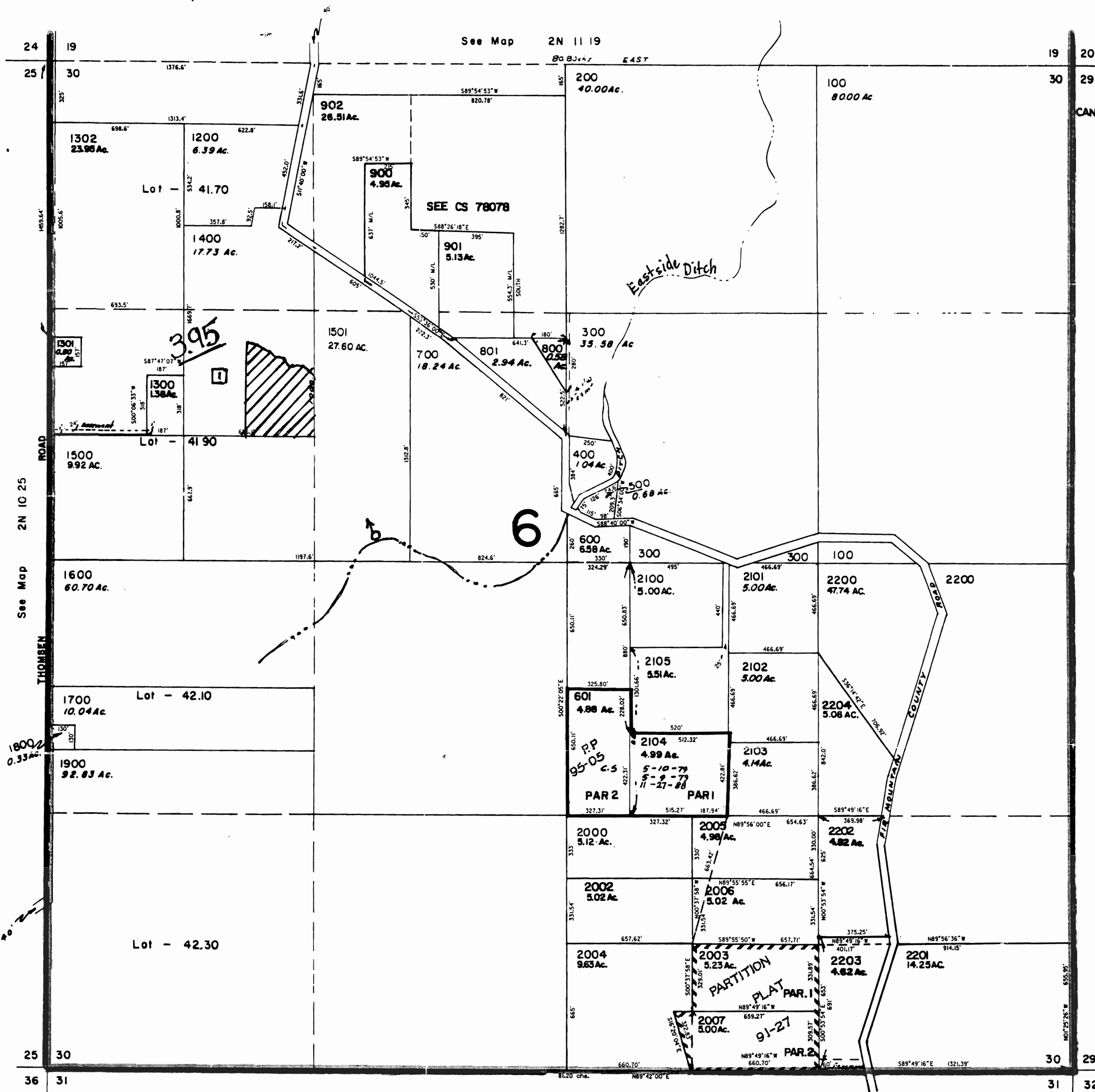
- C-74642
- Transfer from
- Transfer to

East Fork  
Irrigation District  
Hood River, Oregon

Section 30 T.2N. R.11E

Scale 1" = 400' CMS

The hand-written number in the Qtr/Qtr indicates the total amount of water moved.  
Example: If .20 water right acres are added and .50 water right acres are removed, the written number would be .70.



CANCELLED NO'S  
2001  
1100  
1000

See Map 2N 11

See Map 2N 11 31

REVISED 10-7-96 LC

2N 11 30