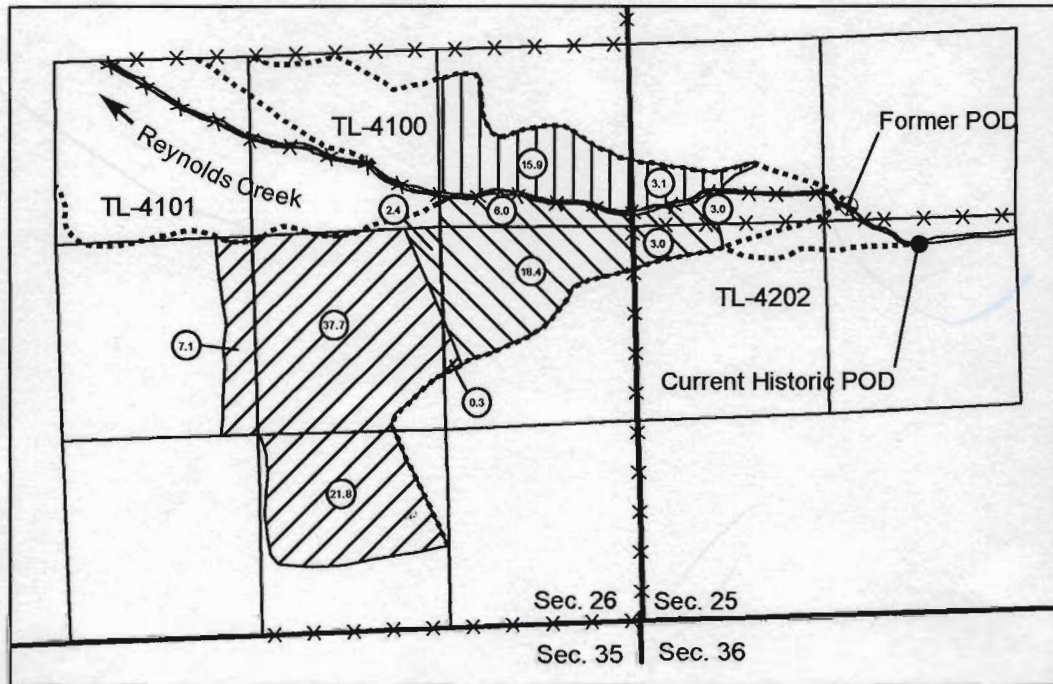


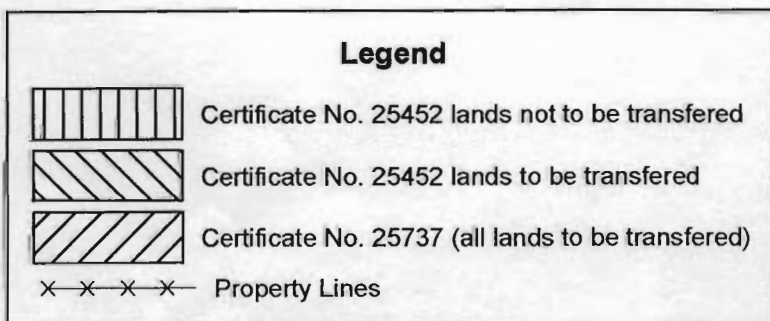
Historic Point of Diversion Transfer Application Map for Elmwood Ranches, Inc



Township 13 South, Range 34 East W.M.

Current Historic POD: N 44° 24' 36.7" W 118° 33' 56.5"

1 inch = 1320 feet



RECEIVED
JUN 30 2006
WATER RESOURCES DEPT
SALEM, OREGON