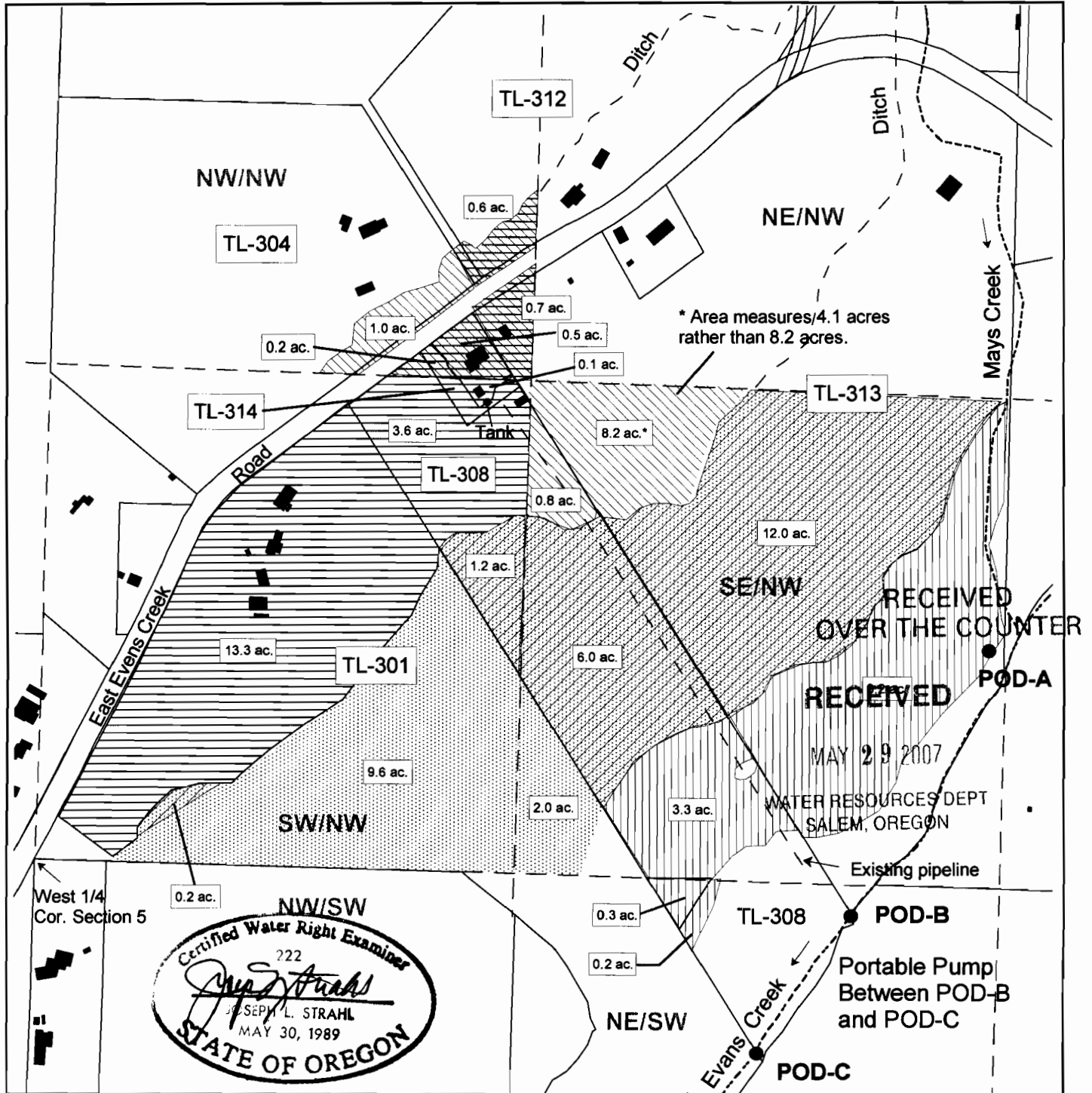


# Change in Point of Diversion and Place of Use Section 5, Township 35 South, Range 3 West W.M. Tax Lots 308 and 314 Jackson County

This map is for the purpose of identifying water rights and is not intended to provide legal dimensions or locations of property ownership lines.



Point of diversion from Mays Creek - Certificates 24152, 51335 and 50143 - SE/NW, Section 32, T. 34 S., R.3W., WM, 35 feet N. and 1675 feet E. from the West 1/4 Corner Section 32.

POD-A - Existing Point of Diversion for Certificates 43985 and 43986 - SE/NW, Section 5, T.35 S., R.3 W., WM. 650 feet N. and 2610 feet E. from the West 1/4 Corner Section 5.

Proposed Point of Diversion for all water rights on Tax lots 308 and 314, NE/SW, between POD-B, 85 feet S. and 2660 feet E. and POD-C, 480 feet S. and 2015 feet E., Both from the West 1/4 Corner of Section 5, T35 S, R.3 W., W.M.

- Certificate 51335 (Decree), 1901, Mays Cr. Change in Point of Diversion (POD) only, for 0.2 acres NW/NW, and 0.8 ac. SE/NW, Cancel 0.5 ac. in NW/NW, Remaining Right - 2.3 ac. NW/NW and 8.2 ac. SE/NW, all in Section 5.
- Certificate 50143 (Permit 17593) 3/6/1947 Mays Cr. & Reservoir. Change in POD & Place of Use 3.6 ac. (primary) FROM SW/NW, TO 3.3 ac. SE/NW and 0.3 ac. NE/SW, Cancel 0.1 ac. (primary) SW/NW, 0.7 ac. (supplemental) NW/NW; Remaining right - 1.3 ac. (supplemental) NW/NW and 13.3 ac. (primary) SW/NW, all in Section 5.
- Certificate 43986 (Permit 3312) 5/27/1917 Evans Cr. (East Evans Cr.) Change in POD and Place of Use FROM 3.3 ac. SE/NW and 0.3 ac. NE/SW TO 3.6 ac. SW/NW; Cancel 0.2 ac. NE/SW; Remaining Right 8.2 acres SE/NW, all in Section 5.
- Certificate 43985 (Permit 6124) 12/1/1923, Evans Cr. (E.F. Evans Cr.) Change POD only for 1.2 ac. SW/NW and 6.0 ac. SE/NW. Remaining Right 0.2 ac. SW/NW and 12.0 ac. SE/NW all in Section 5.
- Certificate 24152 (Permit 24619) 12/4/1956 Mays Cr. (Supplemental). Change in POD only for 1.2 ac. SW/NW and 6.0 ac. SE/NW. Remaining Right, 14 ac. SE/NW and 9.8 ac. SW/NW.

Applicant - Cynthia A. Edwards  
13238 East Evans Creek Rd., Rogue River, OR 97537

**Scale**  
**1 inch = 400 feet**

