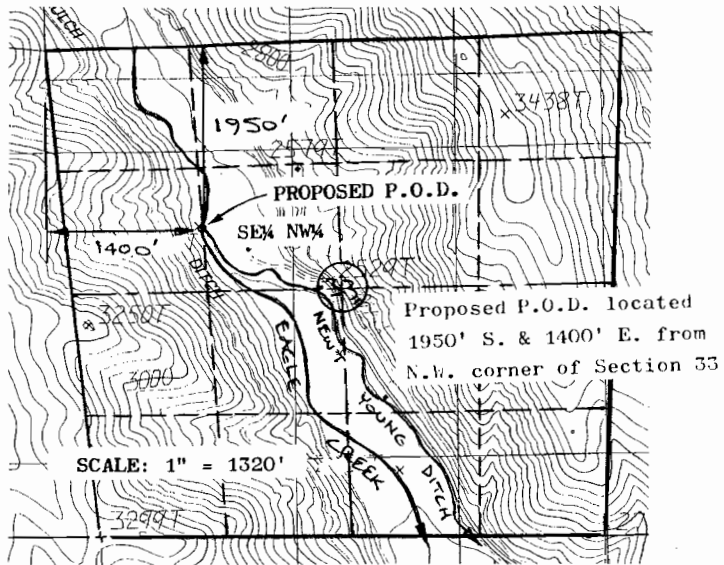
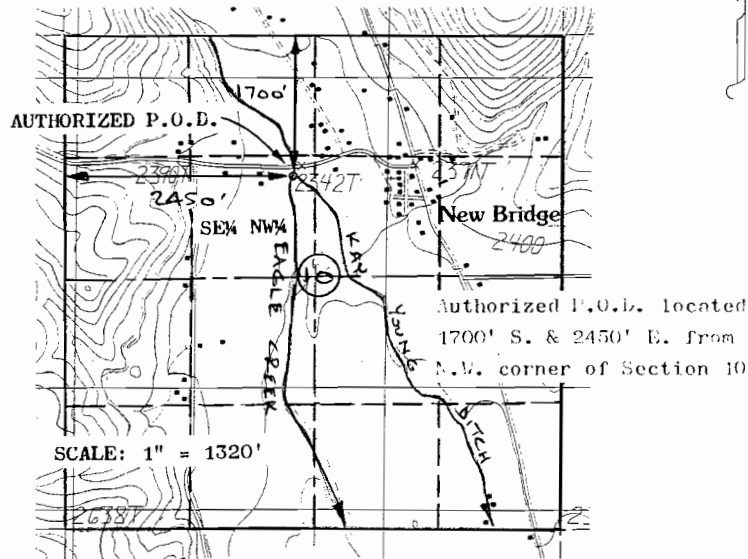


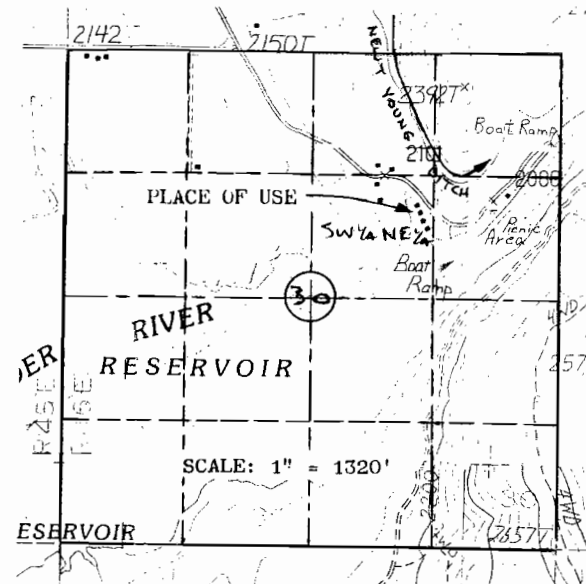
T. 8 S., R. 45 E., W.M.



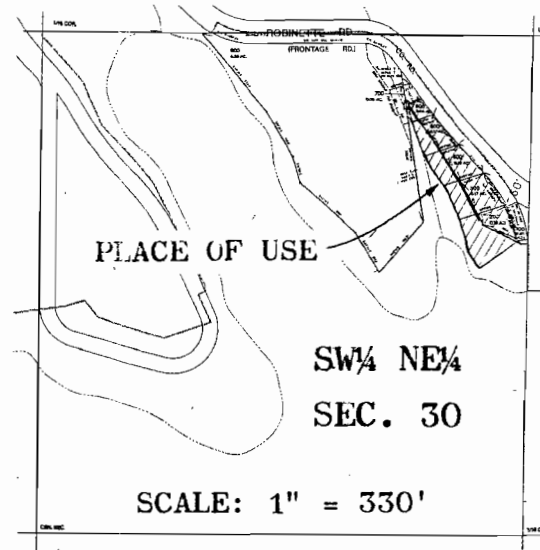
T. 9 S., R. 45 E., W.M.



T. 9 S., R. 46 E., W.M.



T. 9 S., R. 46 E., W.M.



IRRIGATED AREA

T.L. #600	Ed Elms	0.1 ac.
T.L. #500	Ed Elms	0.1 ac.
T.L. #400	A. Kirkpatrick	0.2 ac.
T.L. #300	J & S Mgmt. LLC	0.3 ac.
T.L. #200	Bill Goss Estate	0.3 ac.
		Total = 1.0 ac.

ORIGINAL ACRES:


C-4649	= 15.6 ac. Primary
C-75354	= 11.5 ac. Supplemental

TRANSFERRED LANDS:

C-4649	= 1.0 ac. Primary
C-75354	= 1.0 ac. Supplemental

REMAINING RIGHTS:

C-4649	= 14.6 ac. Primary
C-75354	= 10.5 ac. Supplemental

 Lands trans. from Kay Young Ditch to New Young Ditch

MAP TO ACCOMPANY APPLICATION FOR TRANSFER OF P.O.D.

In the name of:  
Ed Elms, Anne Kirkpatrick, J & S Mgmt. LLC & Bill Goss Estate

Reference:  
Certificate Number 75354  
&  
Certificate Number 4649  
&  
Special Order Volume 51 Page 425

January, 2007  
Revised Feb. 2007



MAR 14 2007  
WATER RESOURCES DEPT  
SALEM, OREGON