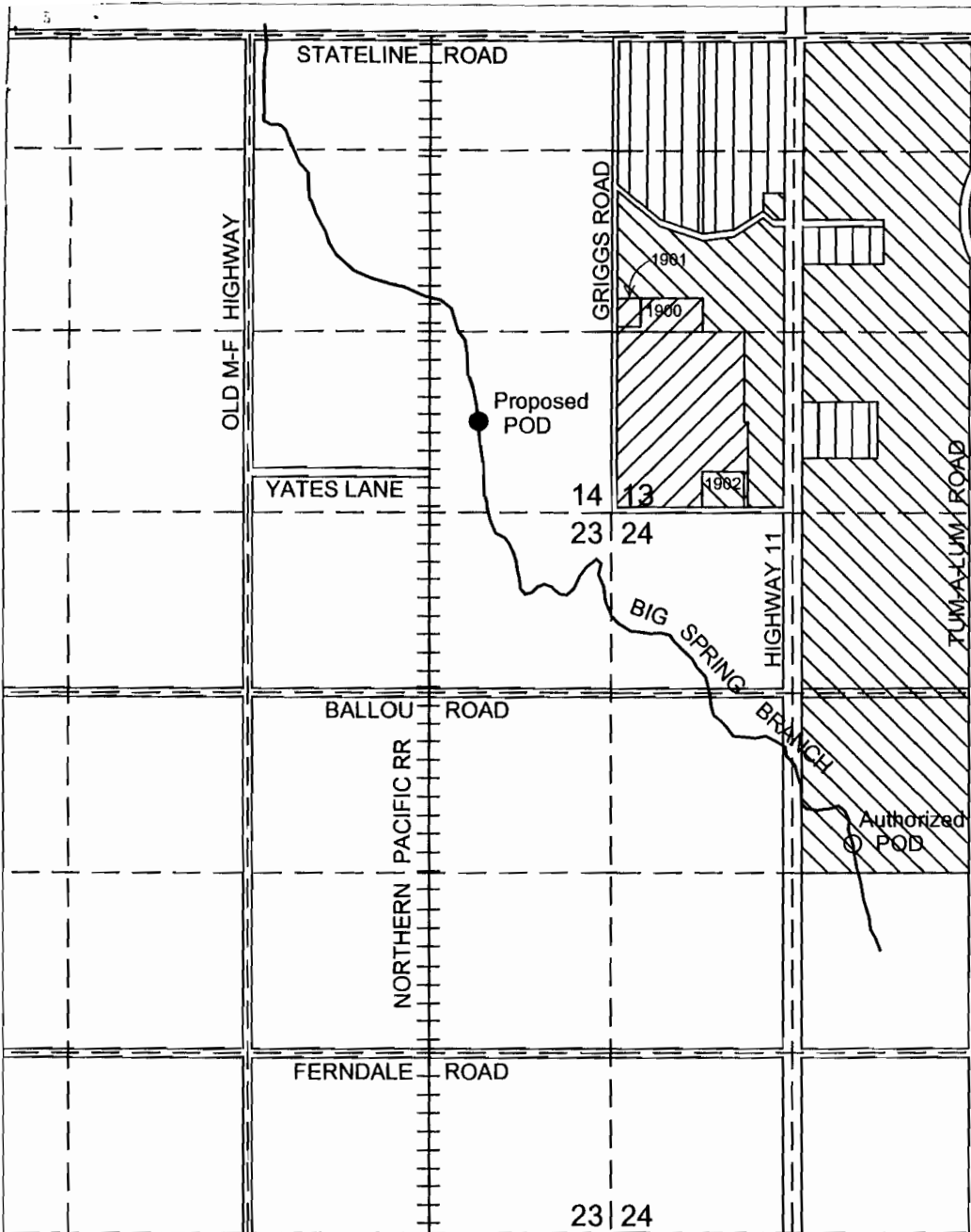


T6N, R35E, WM
UMATILLA COUNTY



1 in = 1320 ft



13 | 18
24 | 19

23 | 24

24 | 19

○ Authorized POD is located in SE/4 of NW/4, Section 24, T6N, R35E, WM.

▨ Authorized Place of Use INCLUDED IN THIS TRANSFER
3.5 acres in the NW/4, SW/4, S13
25.8 acres in the SW/4, SW/4, S13

▨ Authorized Place of Use NOT INCLUDED IN THIS TRANSFER
Excluded through previous transfers

● Proposed POD is located in SE/4 of SE/4, Section 14, T6N, R35E, WM.
642 feet N and 978 feet W from the SE Corner of Section 14, T6N, R35E, WM.

▨ Authorized Place of Use NOT INCLUDED IN THIS TRANSFER
3.3 acres in the SW/4, NW/4, S13
26.5 acres in the SE/4, NW/4, S13
23.1 acres in the NW/4, SW/4, S13
14.2 acres in the SW/4, SW/4, S13
35.1 acres in the SE/4, SW/4, S13
35.0 acres in the NE/4, SW/4, S13

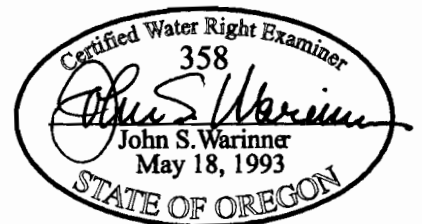
RECEIVED

T 10148

APR 20 2006

WATER RESOURCES DEPT
SALEM, OREGON

CWRE Stamp & Signature



The purpose of this map is to identify the location of a water right. It is not intended to provide information regarding the location of property ownership boundary lines.

FOUNTAINHEAD

1860 Blue Creek Road - Walla Walla, WA 99362
Phone: 509.529.2646 Fax: 509.522.5251

TRANSFER MAP

Transfer POD for Certificate 76488
in the name of
Terry M. Walker
53558 Yates Lane
Milton-Freewater, OR 97862

Revised by John Warinner 12 APR 2006