

MAP FOR WATER RIGHTS TRANSFER

FOR LISKEY FARMS, INC.

APPLICATION NO. G-9874

PERMIT NO. G-9547

CERTIFICATE NO. 67664

SECTIONS 34 & 35, T40S, R9EWM

AREA OF PROPOSED ADDITIONAL PLACE OF USE

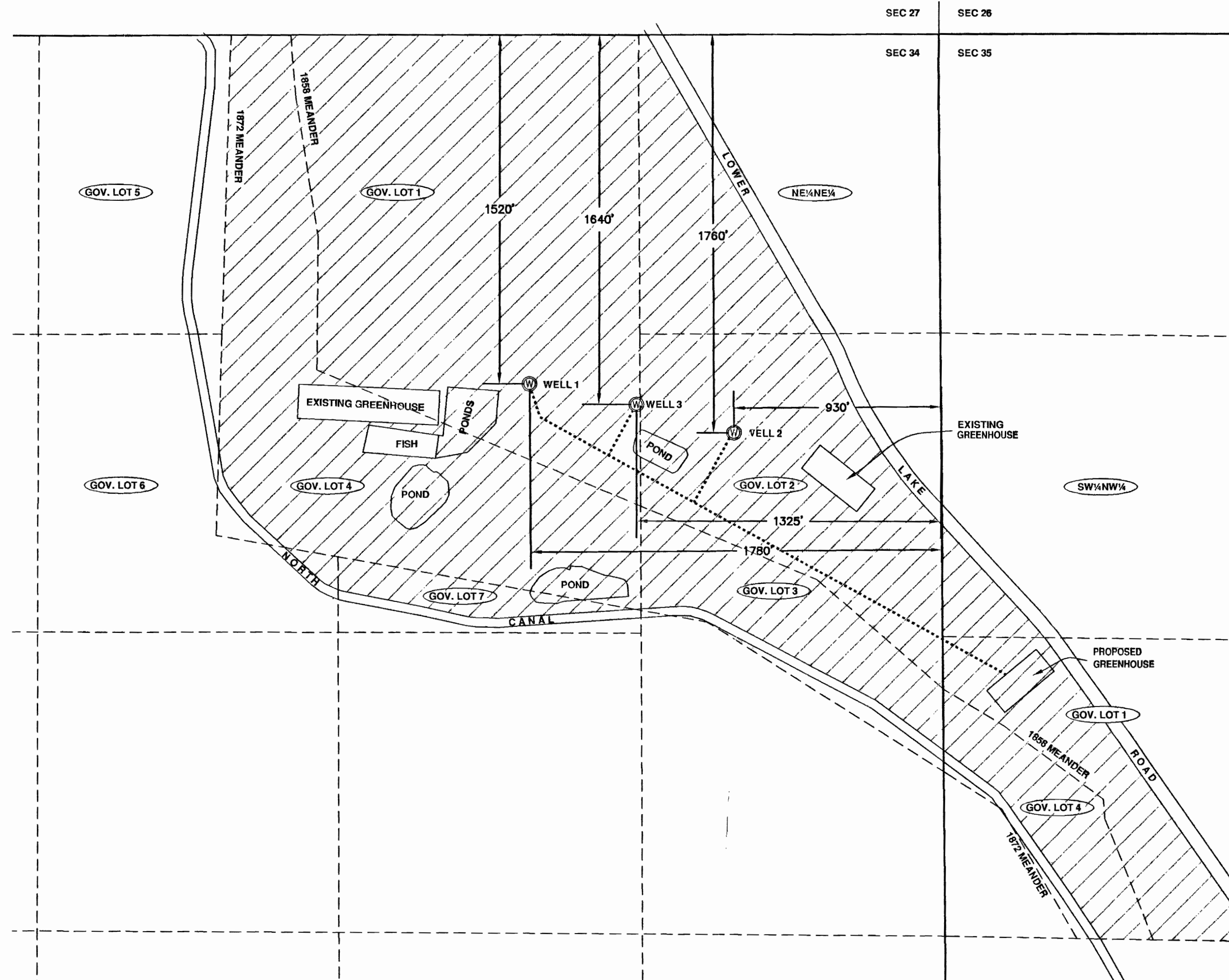
SECTION 34

GOV. LOT 1	57.4 Ac.
GOV. LOT 2	25.8 Ac.
GOV. LOT 3	10.5 Ac.
GOV. LOT 4	37.1 Ac.
GOV. LOT 5	3.1 Ac.
GOV. LOT 6	1.0 Ac.
GOV. LOT 7	3.4 Ac.
NE 1/4 NE 1/4	12.3 Ac.

SECTION 35

GOV. LOT 1	12.1 Ac.
GOV. LOT 4	7.7 Ac.
SW 1/4 NW 1/4	2.5 Ac.

FOR CERTIFICATED PLACE OF USE SEE FINAL PROOF SURVEY MAP FOR PERMIT G9547.



SCALE: 1" = 400'

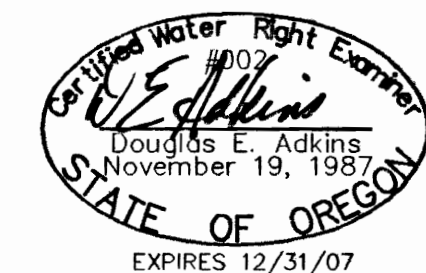


LEGEND

- PROPOSED 12" PIPE
- SECTION/MEANDER LINE
- PROPOSED ADDITIONAL PLACE OF USE

POINTS OF APPROPRIATION

WELL 1 AND WELL 2 ARE EXISTING POINTS OF APPROPRIATION
WELL 3 IS PROPOSED ADDITIONAL POINT OF APPROPRIATION



2950 Shasta Way Klamath Falls, Oregon 97603 · (541) 884-4666 · FAX (541) 884-5335
Klamath Falls, OR · Medford, OR · Alturas, CA

APRIL 27, 2007

WR MAP

2195-02

RECEIVED

MAY 23 2007

WATER RESOURCES DEPT
SALEM, OREGON

Engineers ▲ Planners ▲ Surveyors