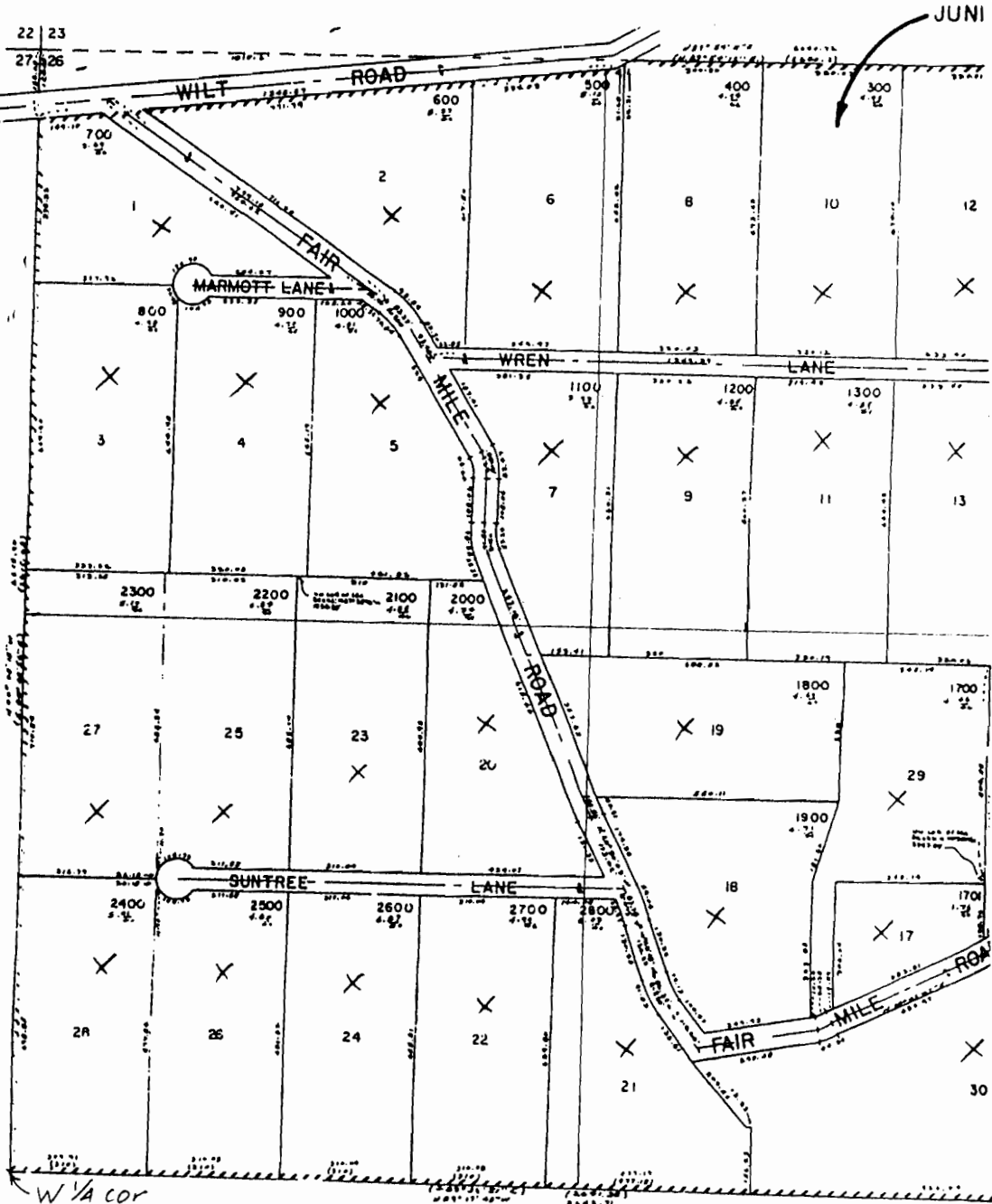


NW1/4 SEC. 26 T.14S. R.10E.W.M.
DESCHUTES COUNTY



Scale 1" = 400'

To: 43 lots



RECEIVED

JAN 22 2008

WATER RESOURCES DEPT
SALEM, OREGON

Transfer Application Map
for
JUNIPINE HOME OWNERS ASSOCIATION
from
Stephen M. Sparks Revocable Trust

RECEIVED

JAN 10 2007

WATER RESOURCES DEPT
SALEM, OREGON

T 10296

NE1/4 SEC. 26 T.14S. R.10E. W.M.
DESCHUTES COUNTY

RECEIVED

JAN 10 2007

WATER RESOURCES DEPT
SALEM, OREGON

NE ACRES

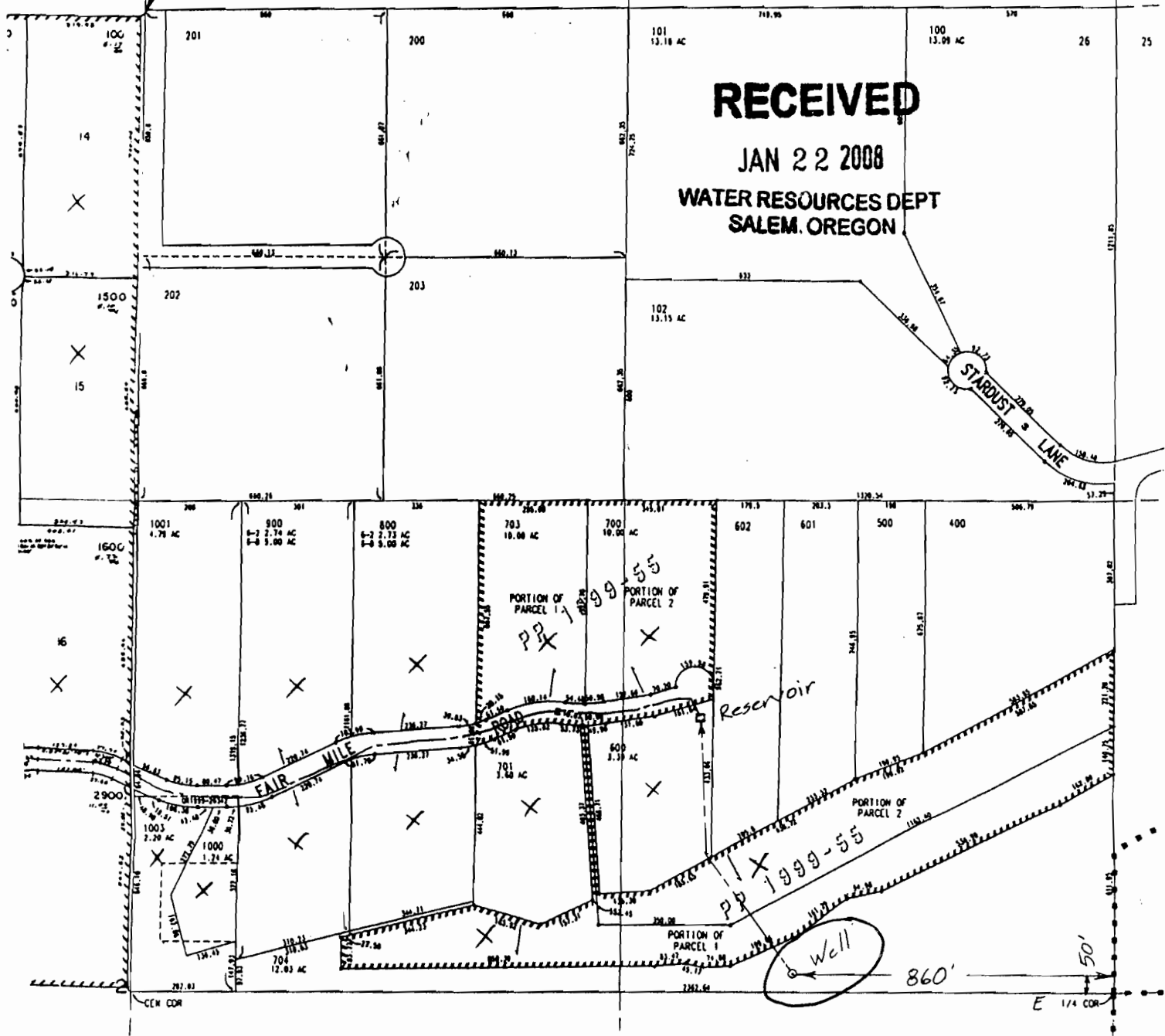
N 1/4 corner

23 24

RECEIVED

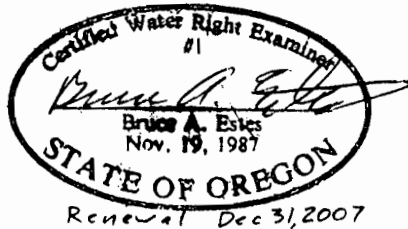
JAN 22 2008

WATER RESOURCES DEPT
SALEM, OREGON



T 10296

This map is for the purpose of
locating a water right only
and has no intent to provide
legal dimensions or the location
of property lines.



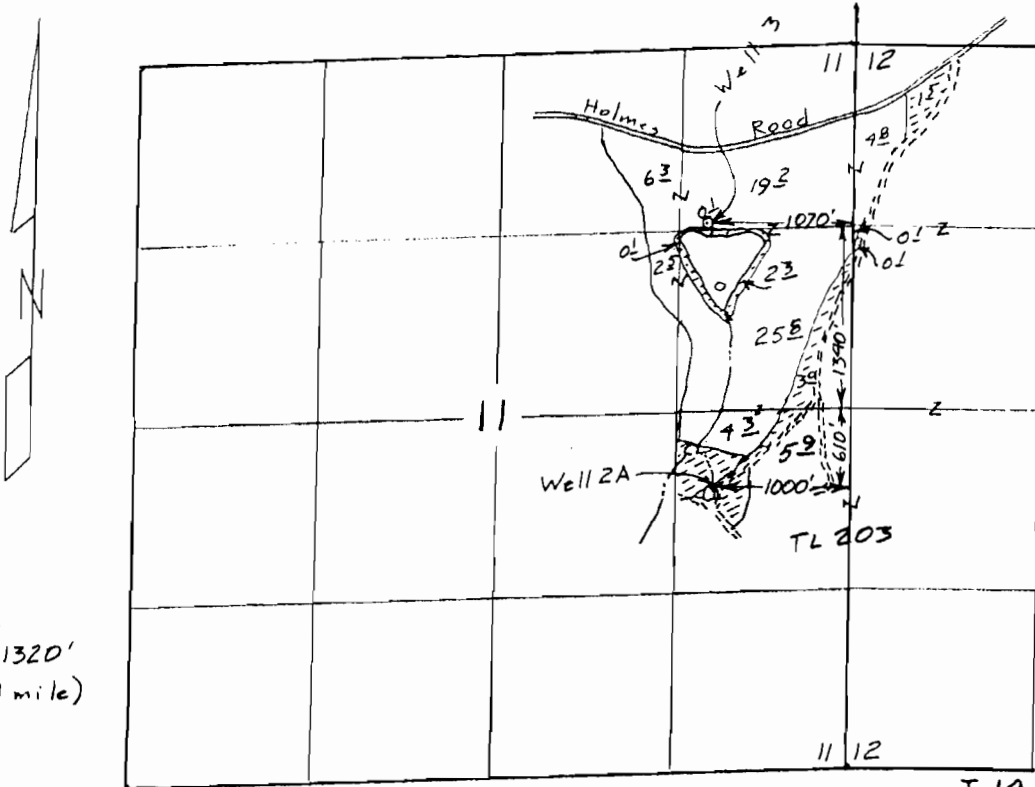
Sheet 2 of 2

ESTES SURVEYS, LLC

PO Box 17519
Salem, OR 97306-7519
(503) 585-7593

60382 Arnold Rd
Bend, OR 97702
(541) 382-7391

TOWNSHIP 14 SOUTH, RANGE 11 EAST, W.M.



Scale
1" = 1320'
(4" = 1 mile)

RECEIVED

MAY 02 2000

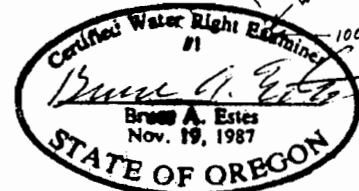
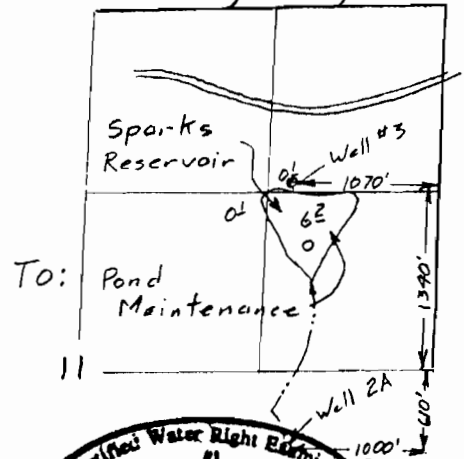
WATER RESOURCES DEPT
SALEM, OREGON

- Remain in place 63² acres
- ⊖ From 13² acres

Transfer Application Map
for
STEPHEN M. SPARKS REVOCABLE TRUST

Transfer T- 10296

T. 14S, R. 11E, W.M.



Renewal Dec 31, 2009

Sheet 1 of 2

This map is for the purpose of locating a water right only and has no intent to provide legal dimensions or the location of property lines.

ESTES SURVEYS, LLC
 PO Box 17519 60382 Arnold Rd
 Salem, OR 97305-7519 Bend, OR 97702
 (503) 585-7593 (541) 382-7391

amended 28 April 00