



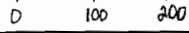
3

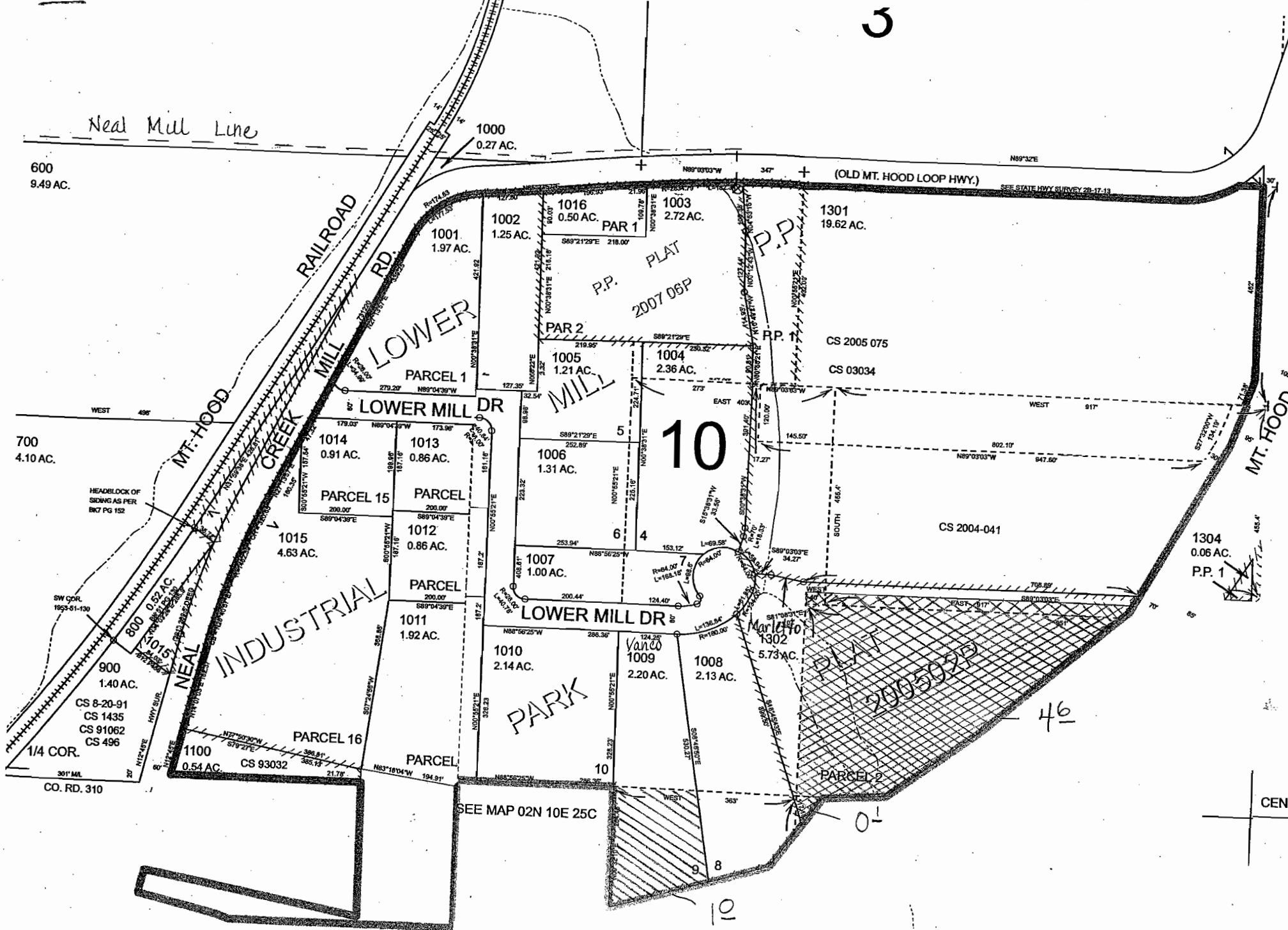
SEE MAP 02N 10E

HWY.

LOOP

REC'D JUN 15 2009

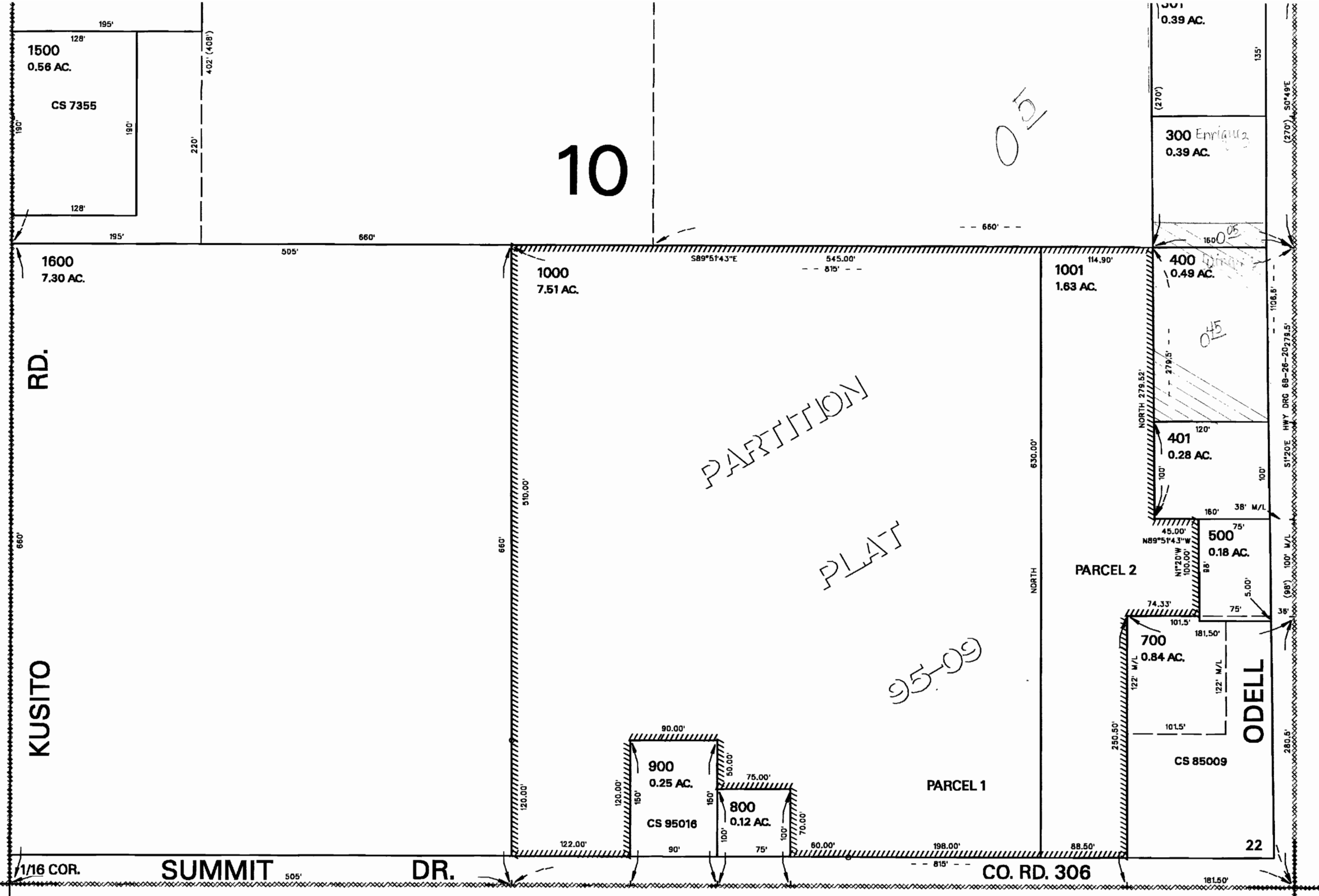
Map Legend	
Partial Cancellation of a Water Right	
Water Right Certificate	
	C-3846
SE/NW 4.60 acres	
NE/SW .10 acre	
	C-1668
NE/SW 1.0 acre	
Section 2N-10E-25	
Scale 1" = 200' cms	
	



CEN. SEC.

Revised CMS 5/11/2007

02N 10E 25 E



SEE MAP 2N 10 23

RECEIVED

DEC 11 2008

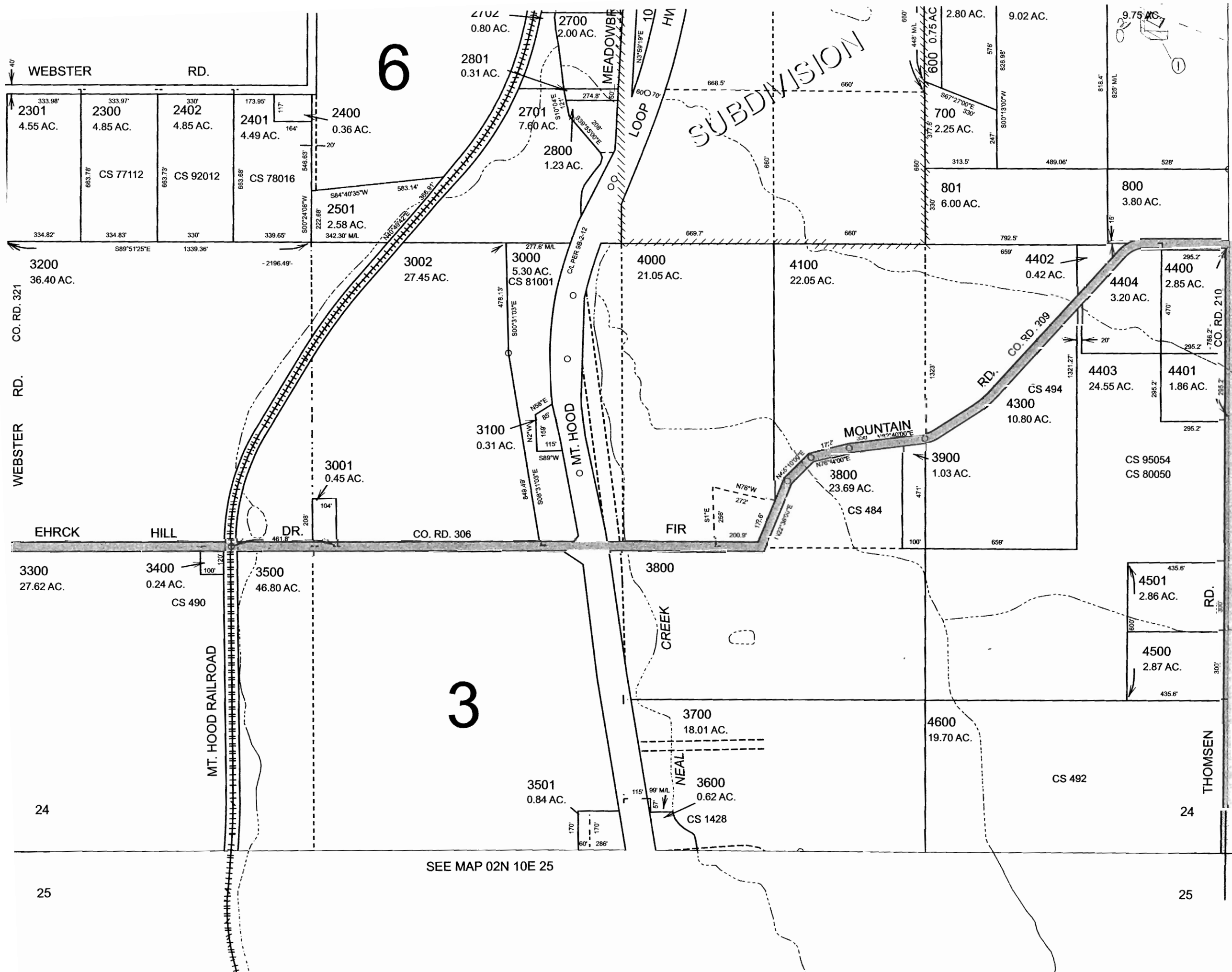
WATER RESOURCES DEPT
SALEM, OREGON

Map Legend	
Map Symbols	
	Turnout Box
	Open Ditch
	Pipeline
	Property Line
Water Right Certificate	
	C-81340
	Transfer To
	Transfer From
East Fork Irrigation District Hood River, Oregon	
Section 2N-10-22DD	
Scale 1" = 100' cms	

SEE MAP 2N 10 27

REVISED: JD
11/19/02

2N 10 22DD



SEE MAP 02N 11E 19

Map Legend	
Map Symbols	
Water Right Certificate	
	C-81340
	Transfer To
	Transfer From
East Fork Irrigation District	
Hood River, Oregon	
Section 2N-10E-24	
Scale 1" = 400' cms	

SEE MAP 02N 10E 25

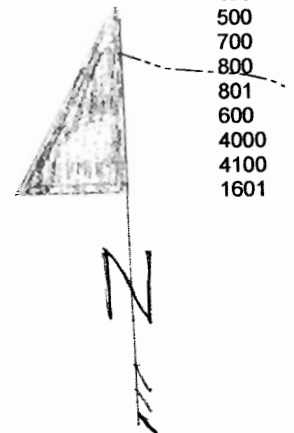
RECEIVED
 DEC 11 2008
 WATER RESOURCES DEPT
 SALEM, OREGON
 Revised CMS
 5/11/2007
 02N 10E 24

SECTION 24 T02N R10E WM
HOOD RIVER COUNTY

1" = 400'

CANCELLED NOS.

- 200
- 2000
- 2100
- 2790
- 2890
- 2900
- 3502
- 4200
- 100
- 900
- 300
- 400
- 500
- 700
- 800
- 801
- 600
- 4000
- 4100
- 1601



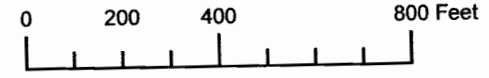
Crag Rat Line

RECEIVED

DEC 11 2008

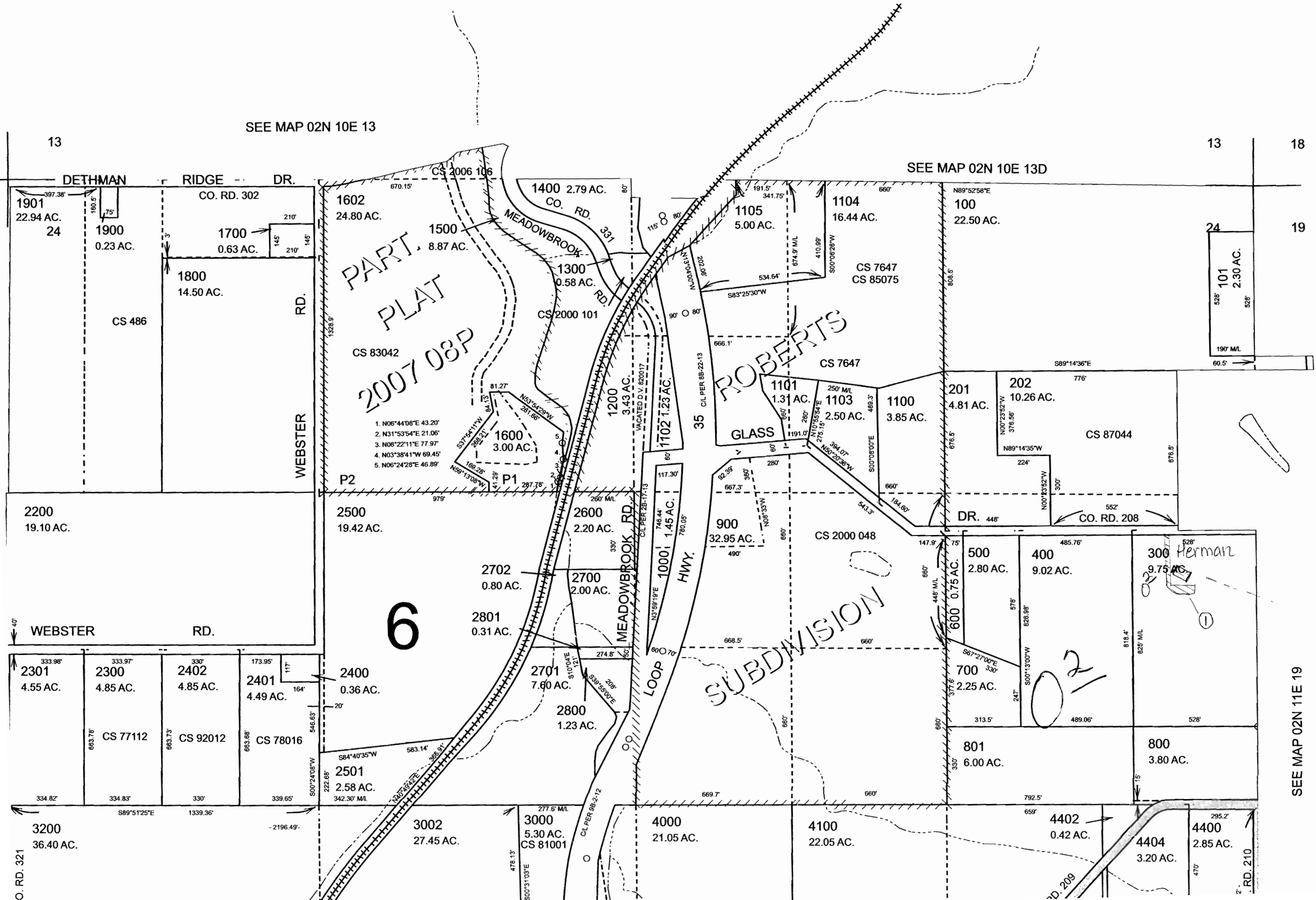
WATER RESOURCES DEPT
SALEM, OREGON

ED FOR
ONLY



SEE MAP 02N 10E 13

SEE MAP 02N 10E 13D



SEE MAP 02N 11E 19

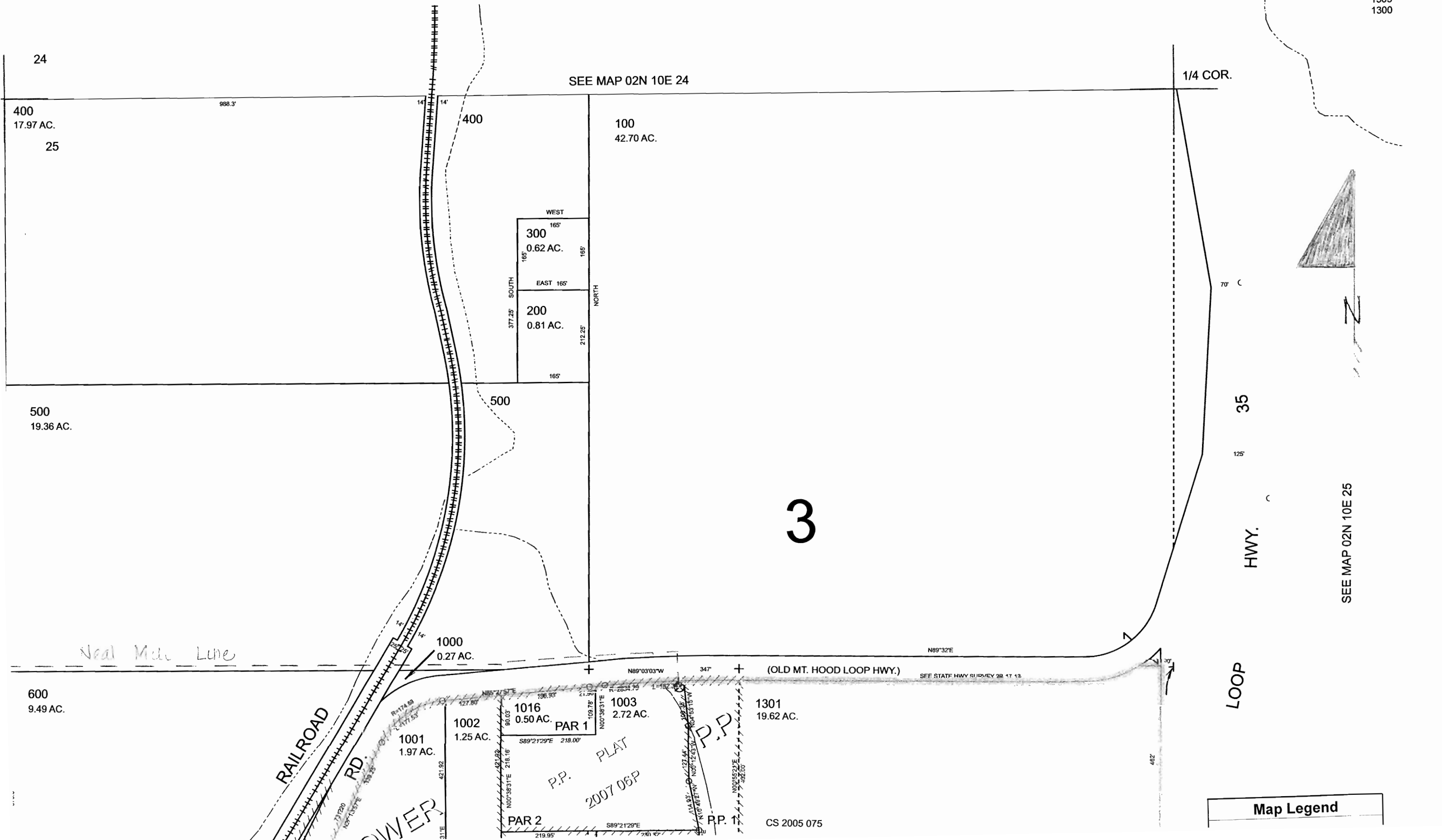
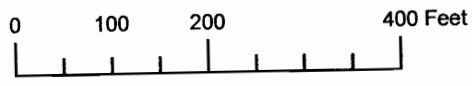
CO. RD. 321

RD. 210

- CANCELLED NOS.
- 1400
 - 1500
 - 1200
 - 1303
 - 1300

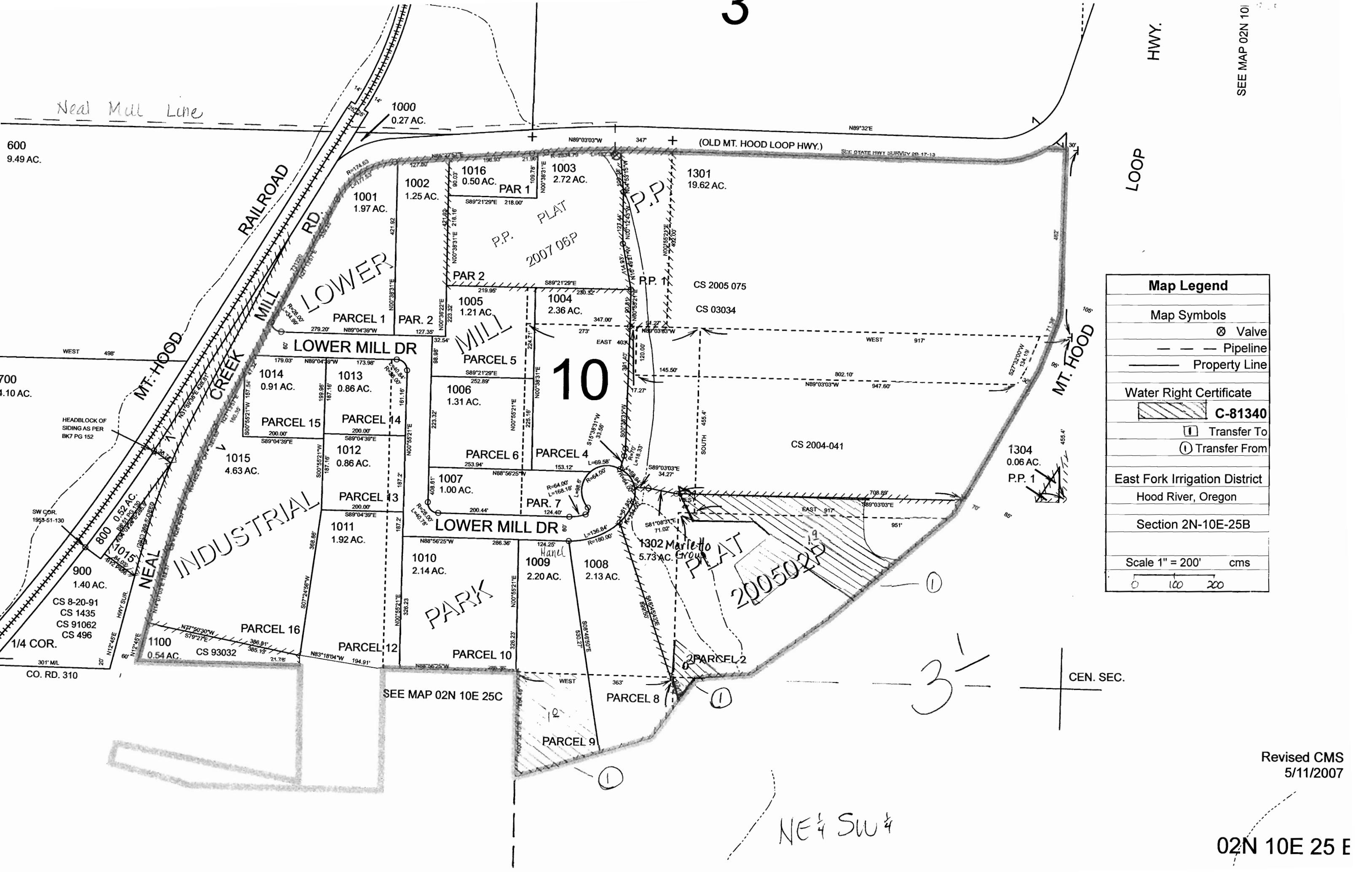
NW 1/4 SECTION 25 T02N R10E WM
HOOD RIVER COUNTY
1" = 200'

PREPARED FOR
OFFICE ONLY



SEE MAP 02N 10E 25

Map Legend



Map Legend	
Map Symbols	
	Valve
	Pipeline
	Property Line
Water Right Certificate	
	C-81340
	Transfer To
	Transfer From
East Fork Irrigation District Hood River, Oregon	
Section 2N-10E-25B	
Scale 1" = 200' cms	

Revised CMS
5/11/2007

02N 10E 25 E

NE 1/4 SW 1/4

3'

SEE MAP 02N 10E 25C

CEN. SEC.

SEE MAP 02N 10

HWY.

LOOP

MT. HOOD

(OLD MT. HOOD LOOP HWY.)

10

PARK

Marletto Plat
Hand Group

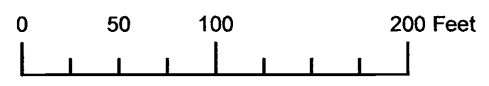
INDUSTRIAL

LOWER MILL

RAILROAD

Neal Mill Line

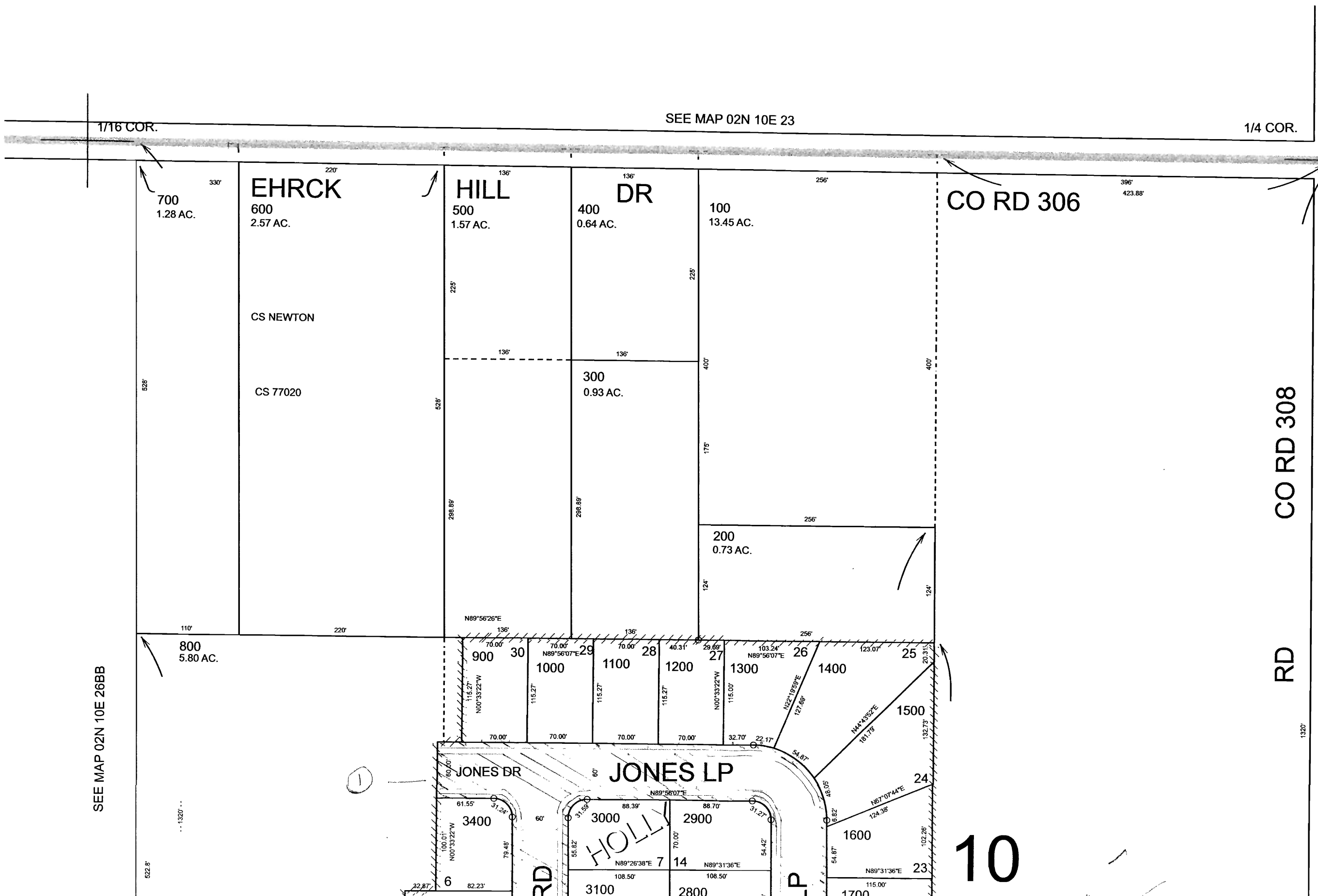
VAS PREPARED FOR
ENT PURPOSE ONLY



NE 1/4 NW 1/4 SECTION 26 T02N R10E WM HOOD RIVER COUNTY

1" = 100'

02N 10E
CANCEL



CO RD 308
RD

RECEIVED

DEC 11 2008

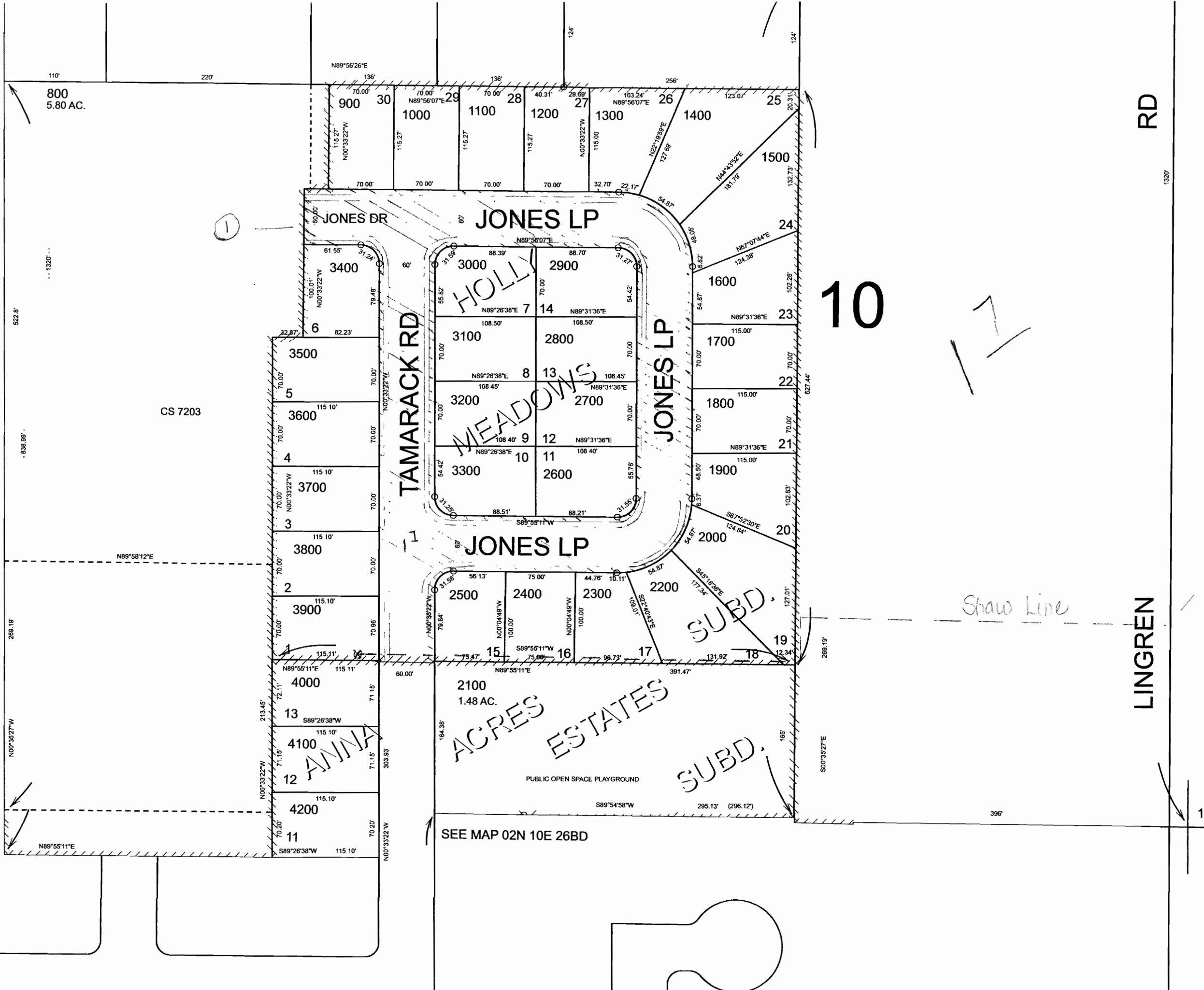
WATER RESOURCES DEPT
SALEM, OREGON

SEE MAP 02N 10E 26

Map Legend

Map Symbols

SEE MAP 02N 10E 26BB



SEE MAP 02N 10E 26

Map Legend	
Map Symbols	
	Valve
	Pipeline
	Property Line
Water Right Certificate	
	C-81340
	Transfer To
	Transfer From
East Fork Irrigation District	
Hood River, Oregon	
Section 2N-10E-26BA	
Scale 1" = 100' cms	

RECEIVED

DEC 11 2008

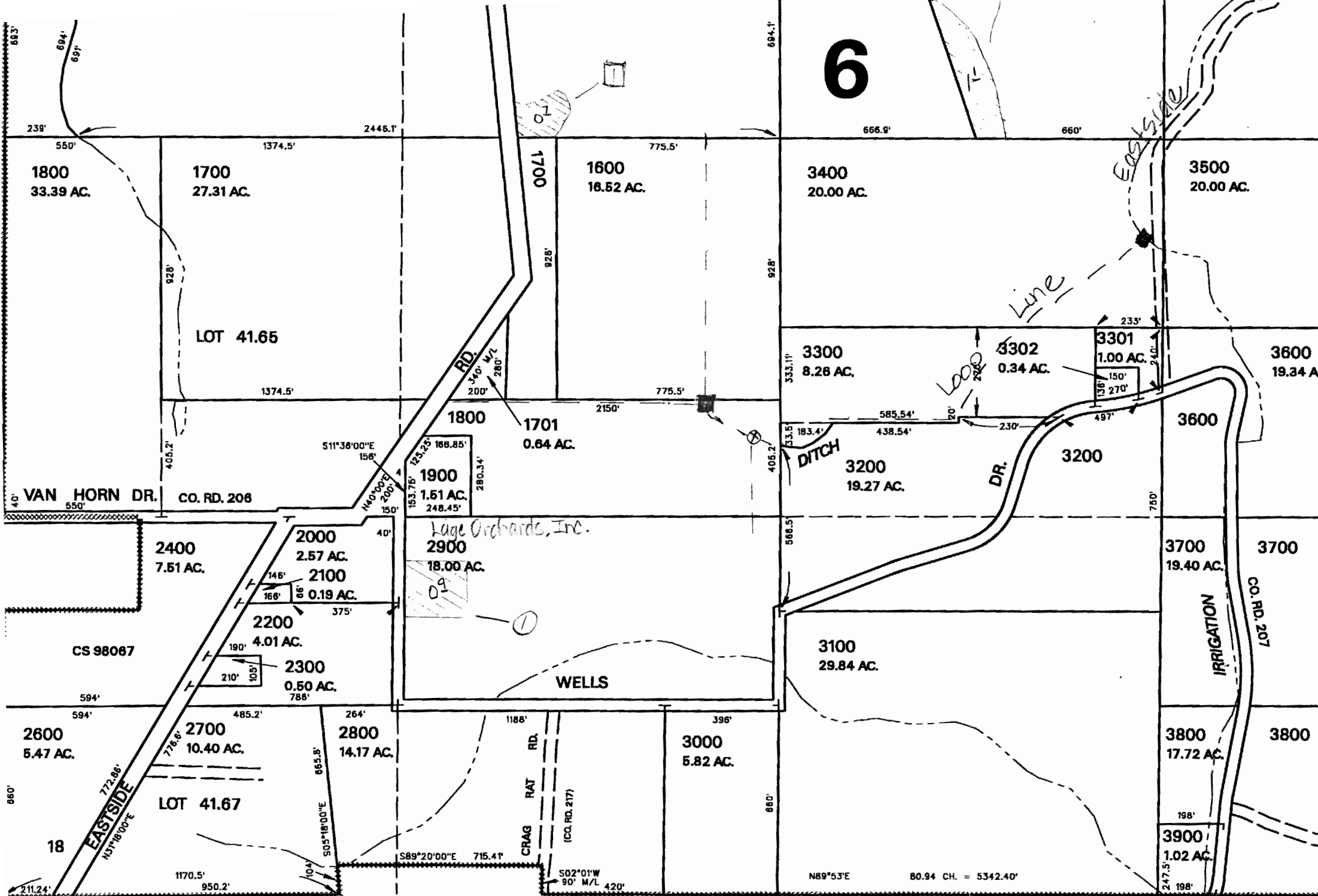
WATER RESOURCES DEPT
SALEM, OREGON

1 10 18

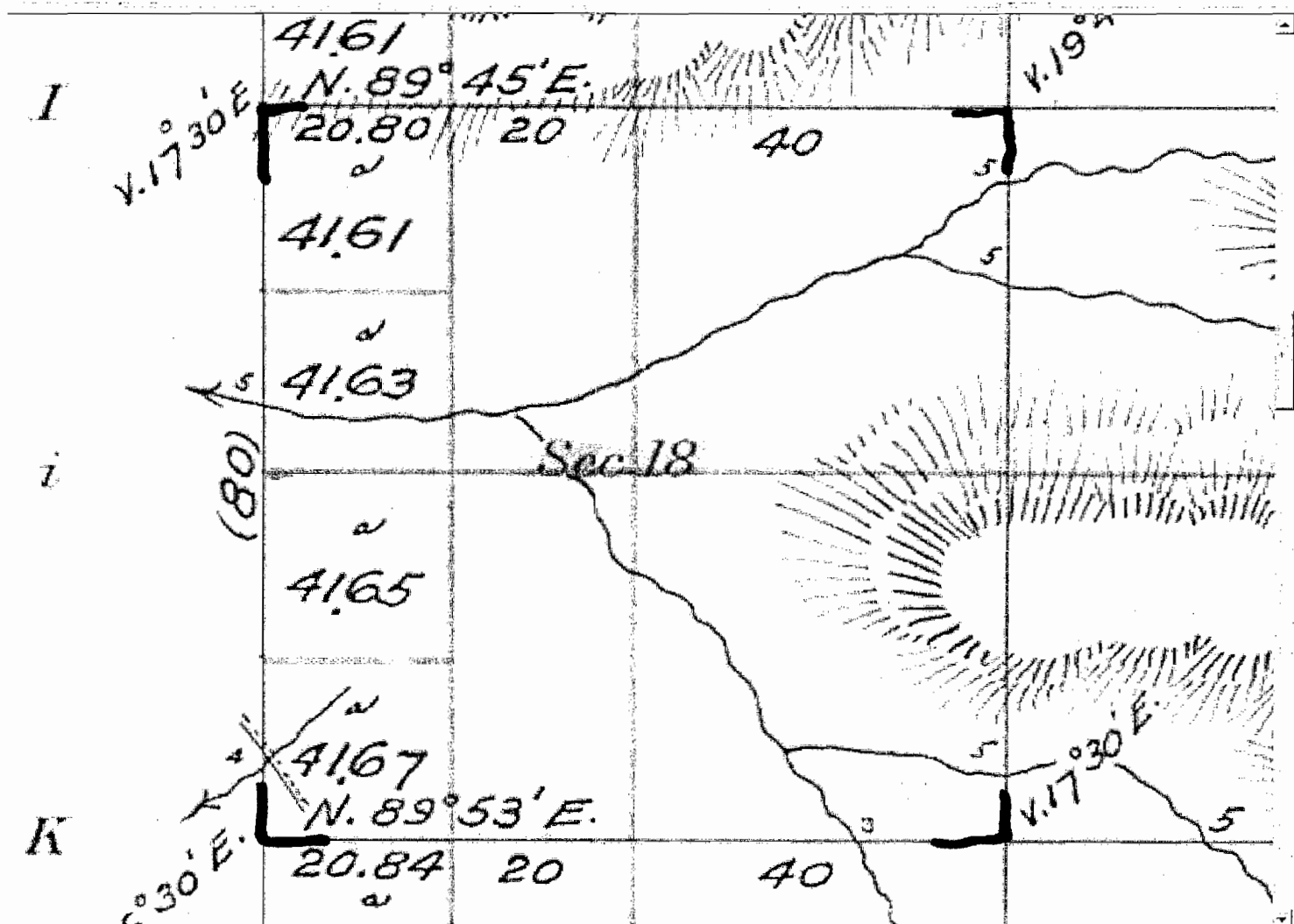
Revised CMS
3/7/2007

02N 10E 26 E

6



SEE MAP 02N 11E 19



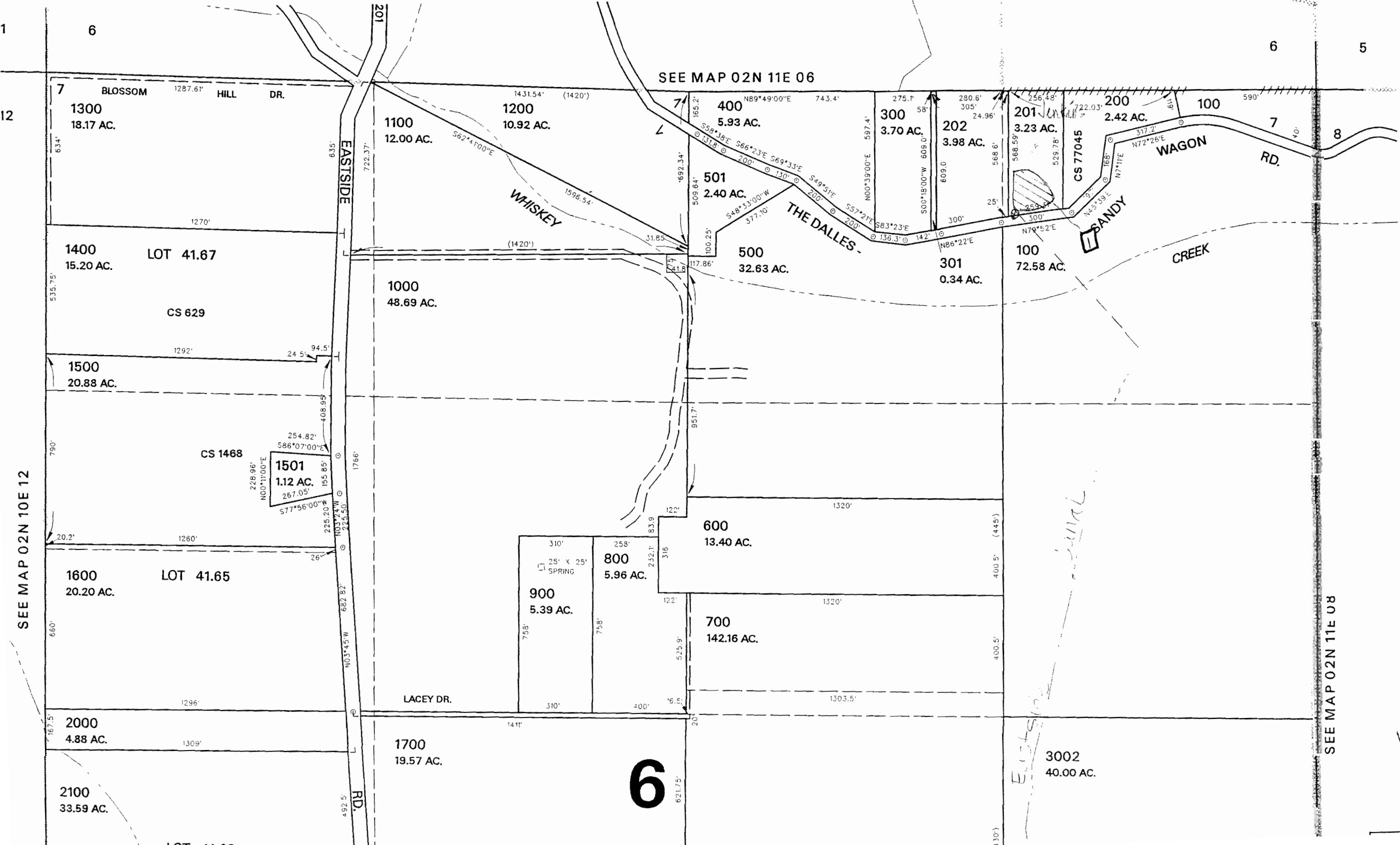
THIS MAP WAS PREPARED FOR ASSESSMENT PURPOSE ONLY

SECTION 07 T.02N. R.11E. W.M. HOOD RIVER COUNTY

1"=400'

02N 11E 07

CANCELLED NO
302
1900
2200
2900
3001



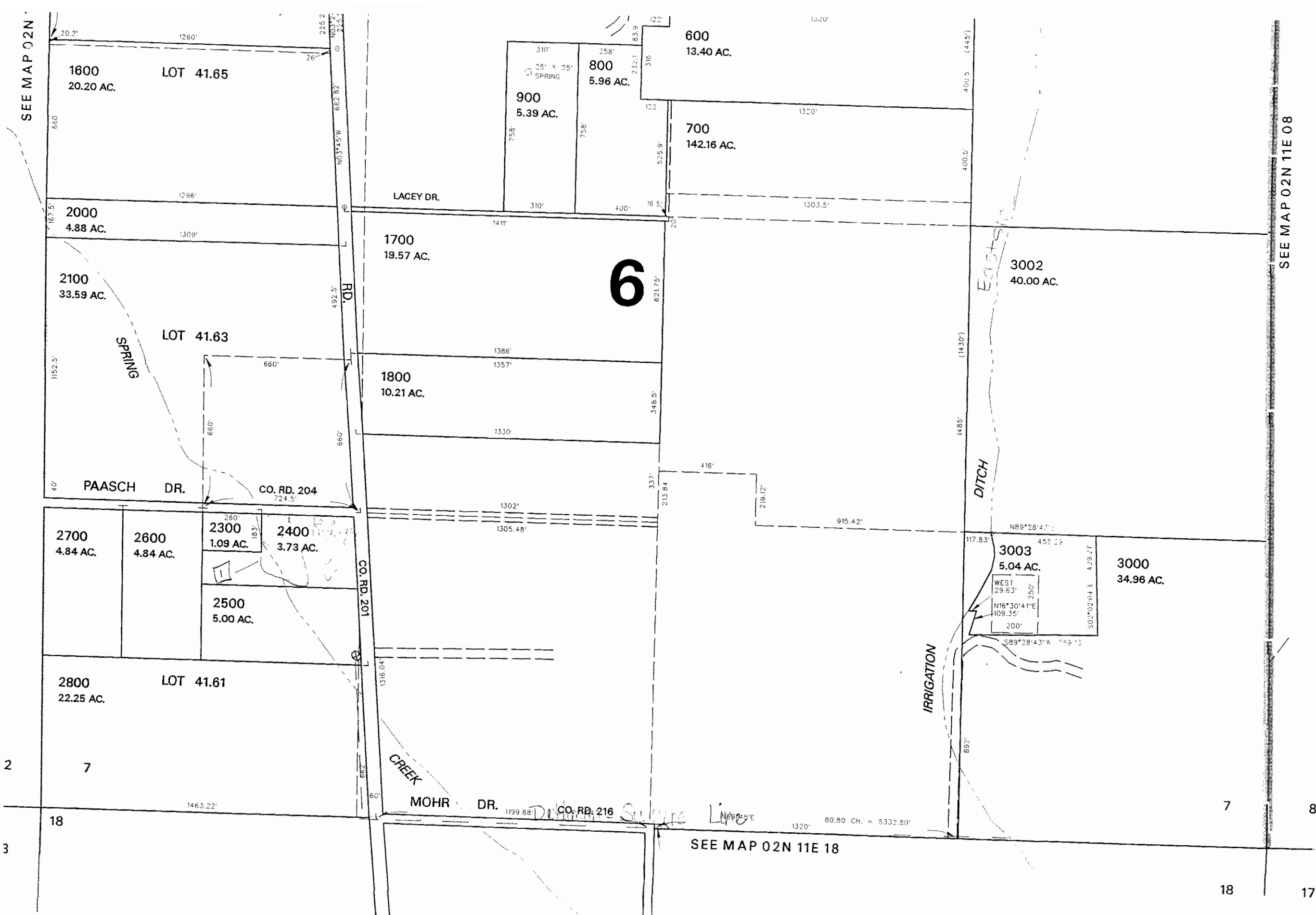
SEE MAP 02N 10E 12

SEE MAP 02N 11E 06

SEE MAP 02N 11E 08

12

RECEIVED
DEC 11 2008
WATER RESOURCES DEPT
SALEM, OREGON



Map Legend	
Map Symbols	
	Valve
	Pipeline
	Property Line
Water Right Certificate	
	C-81340
	Transfer To
	Transfer From
East Fork Irrigation District	
Hood River, Oregon	
Section 2N-11E-07	
Scale 1" = 400' cms	

RECEIVED

DEC 11 2008

WATER RESOURCES DEPT
SALEM, OREGON

REVISED: JD
02/24/03

02N 11E 07

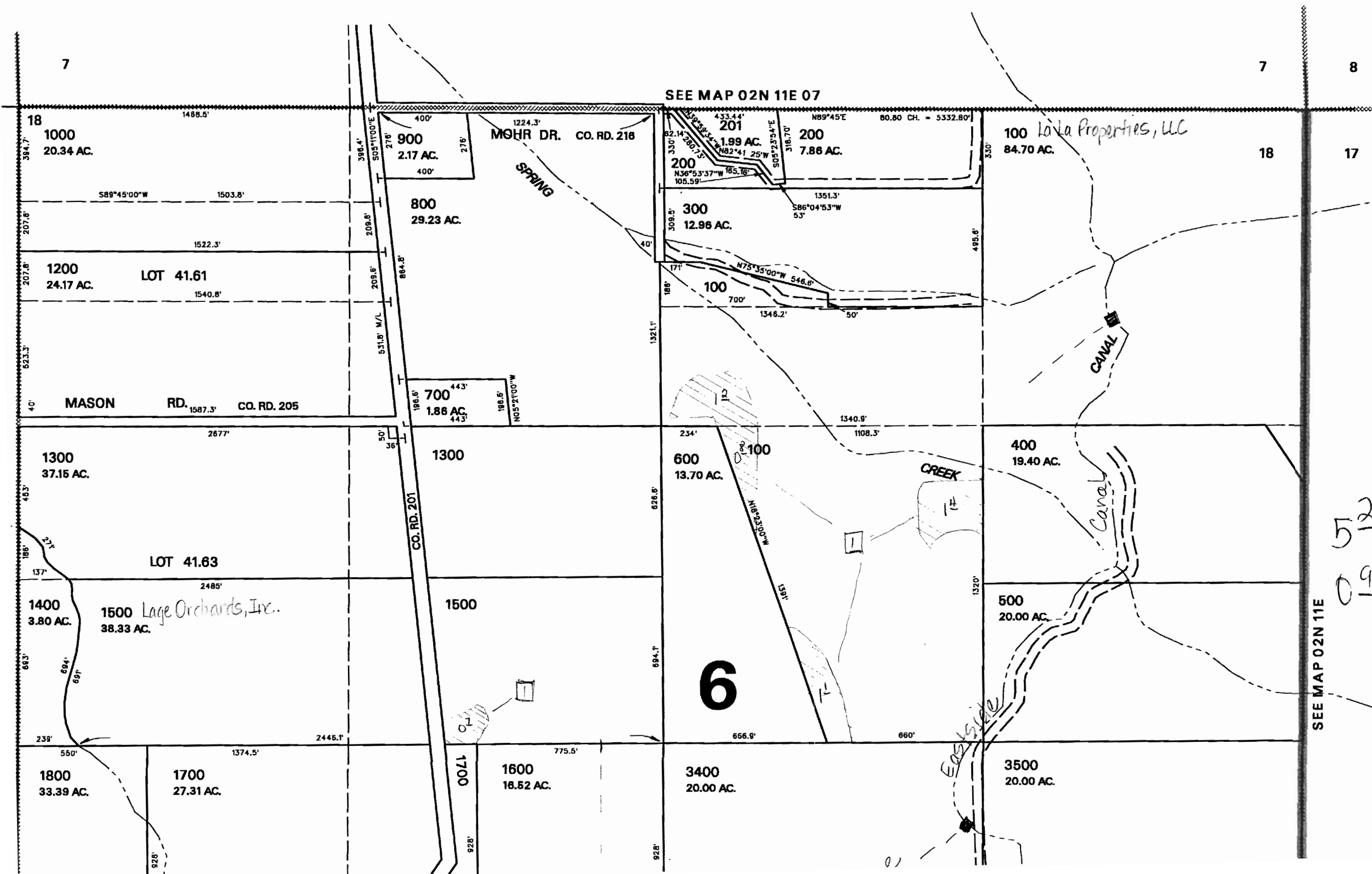
SECTION 18 T.02N. R.11E. W.M. HOOD RIVER COUNTY

1" = 400'

02N 11E 18

CANCELLED NO.
1100
2500

THIS MAP WAS PREPARED FOR
ASSESSMENT PURPOSE ONLY



5² transfer to
0⁹ transfer from

RECEIVED

DEC 1 1 2008

WATER RESOURCES DEPT
SALEM, OREGON

SEE MAP 02N 11E

SEE MAP 02N 11E 07