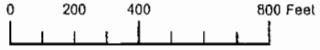


PREPARED FOR
PURPOSE ONLY



Amended 7/13/2009

SECTION 06 T.21S. R.47E. W.M.
MALHEUR COUNTY

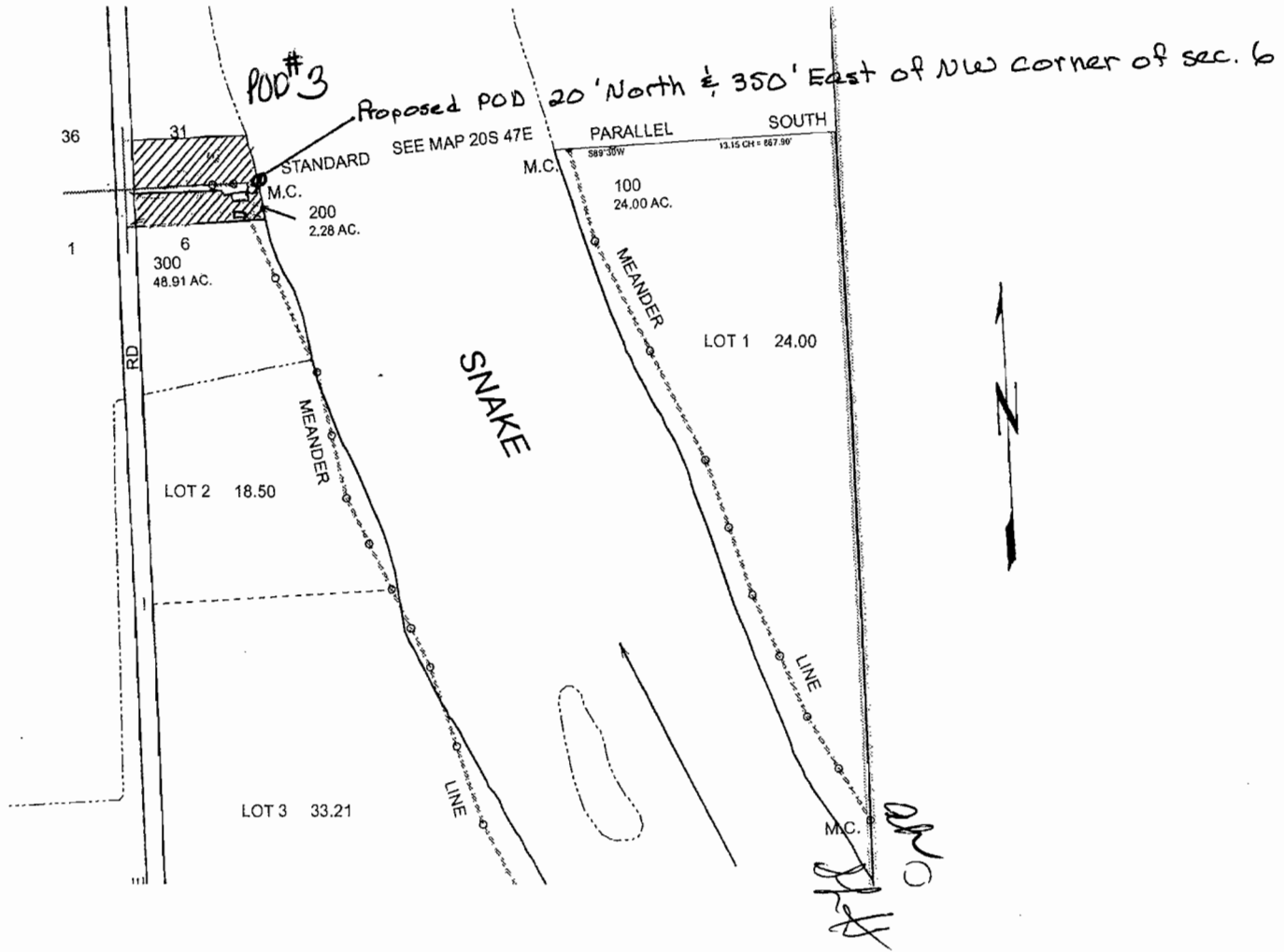
1" = 660'

RECEIVED
JUL 23 2009
WATER RESOURCE DEPT.
EASTERN REGION

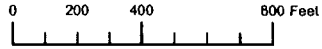
RECEIVED

MAR 24 2008

WATER RESOURCES DEPT
SALEM, OREGON



PREPARED FOR
PURPOSE ONLY

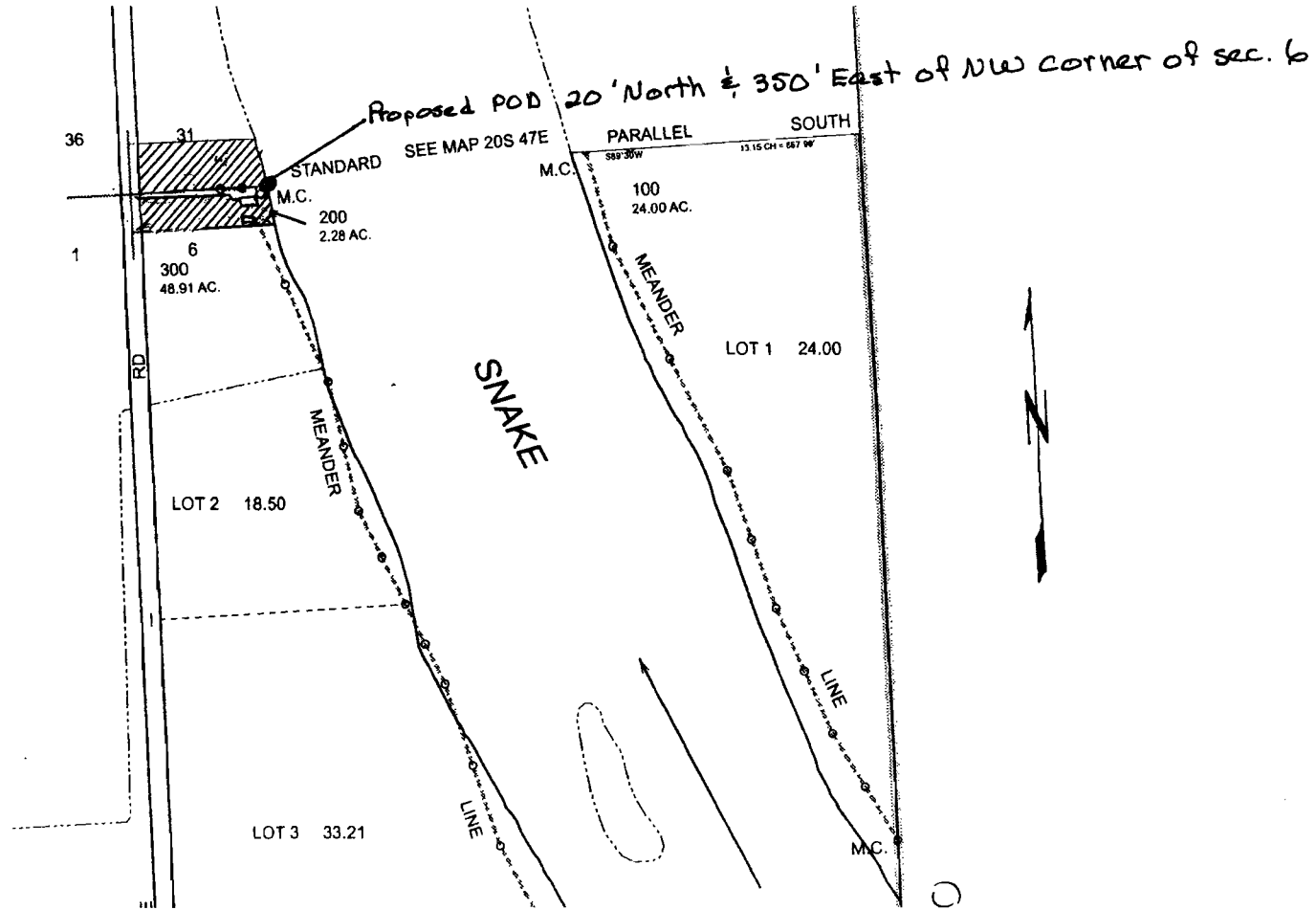


SECTION 06 T.21S. R.47E. W.M.
MALHEUR COUNTY
1" = 660'

RECEIVED

MAR 24 2008

WATER RESOURCES DEPT
SALEM, OREGON



Section 6 T21S R47E W.M



RECEIVED

MAR 24 2008

WATER RESOURCES DEPT
SALEM, OREGON