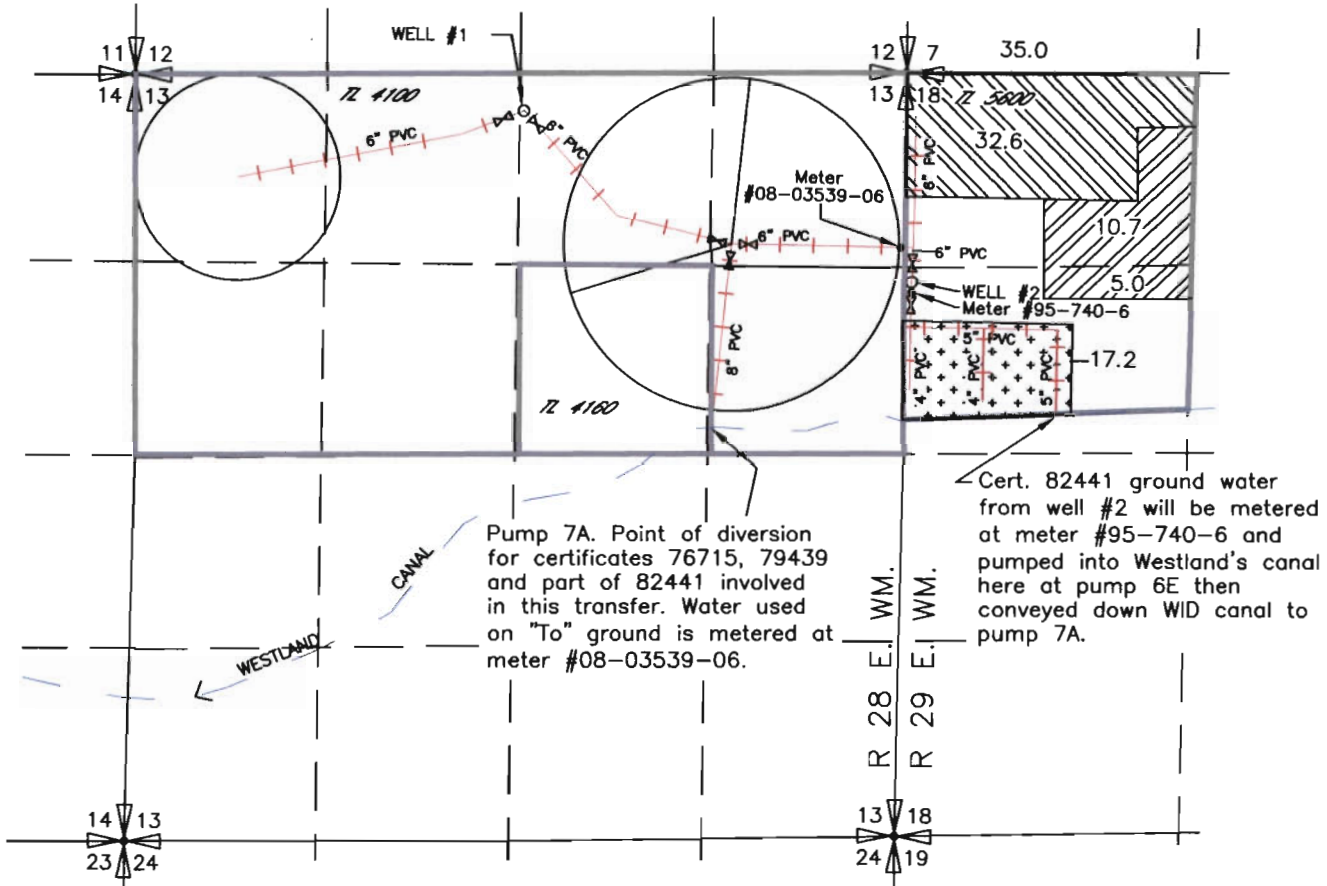


2010 WESTLAND IRRIGATION DISTRICT
 TEMPORARY TRANSFER
 DOUBLE M RANCH, INC – DOUBLE M RANCH INC
 CERTIFICATES 76715, 79439 & 82441
 T3N, R 28 & 29 E, W.M.

FROM



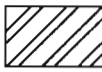


Cert. 82441 ground water from well #2 will be metered at meter #95-740-6 and pumped into Westland's canal here at pump 6E then conveyed down WID canal to pump 7A.

Pump 7A. Point of diversion for certificates 76715, 79439 and part of 82441 involved in this transfer. Water used on "To" ground is metered at meter #08-03539-06.

WELL #1 Located 270' South & 2540' West from the NE corner section 13, T3N, R28E, WM

WELL #2 Located 1450' South & 3160' West from the N 1/4 corner section 18, T3N, R29E, WM

T3N., R 29E., W.M.

-  Primary Cert. 76715 & Supplemental Cert. 79439
-  Certificate 82441
-  Certificate 82441 not involved in this transfer

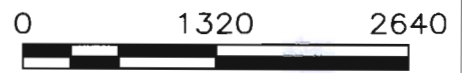
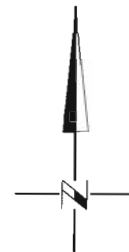
⊗ Control Valve

This transfer is identical to district temporary transfers, 2008 T-10611 and 2009 T-10834

RECEIVED

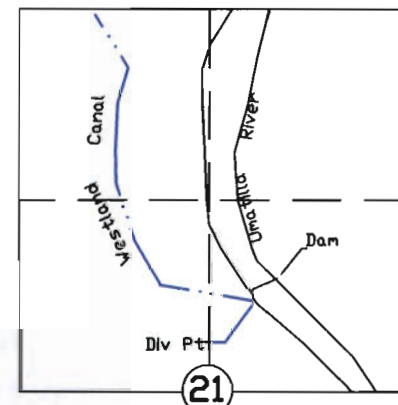
MAR 25 2010

WATER RESOURCES DEPT
 SALEM, OREGON



SCALE IN FEET

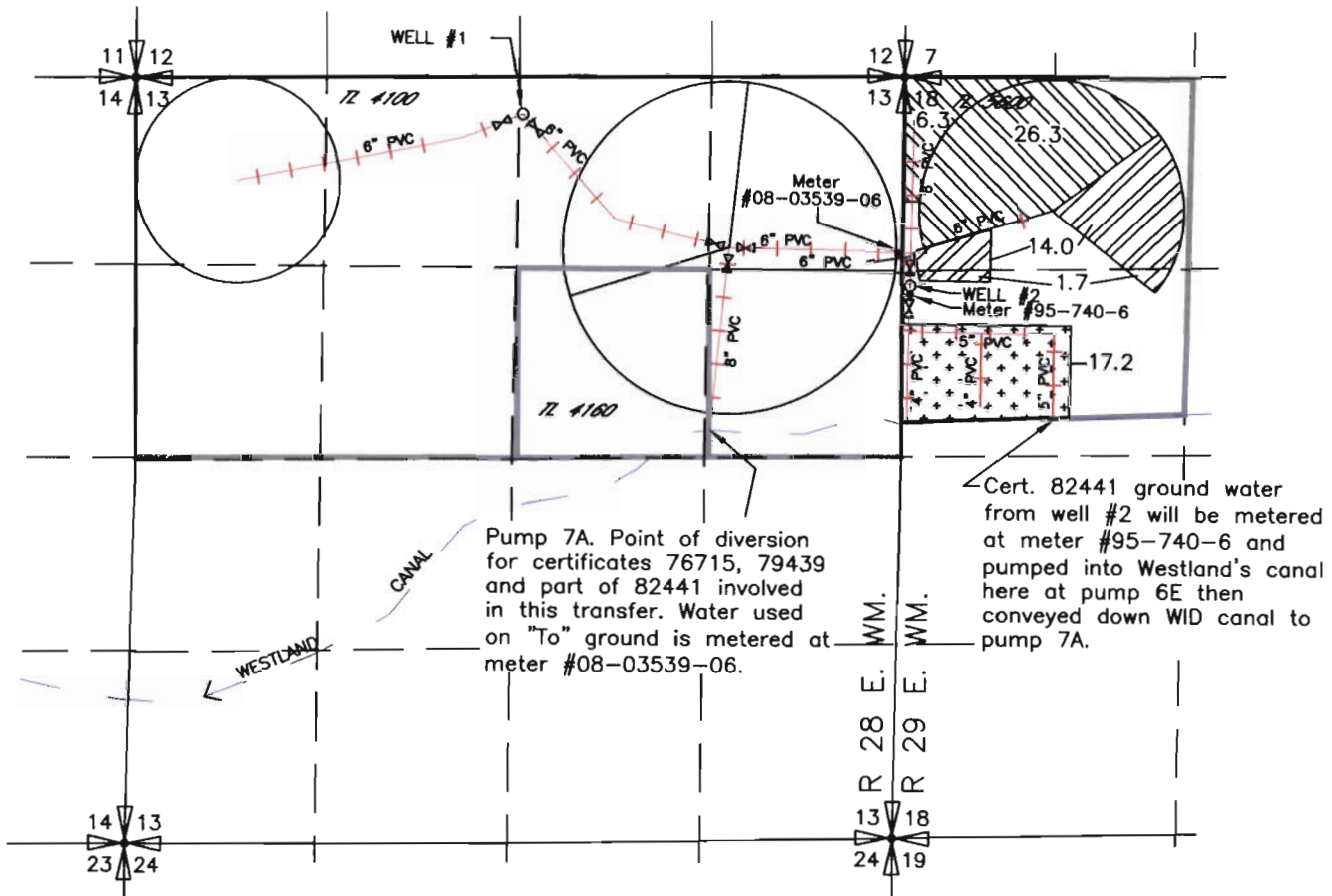
T 11043



NOTE: THE PURPOSE OF THIS MAP IS TO IDENTIFY THE APPROXIMATE LOCATION OF THE WATER RIGHT. IT IS NOT INTENDED TO PROVIDE INFORMATION RELATIVE TO THE LOCATION OF PROPERTY OWNERSHIP BOUNDARY LINES.

2010 WESTLAND IRRIGATION DISTRICT
 TEMPORARY TRANSFER
 DOUBLE M RANCH INC
 CERTIFICATES 76715, 79439 & 82441
 T3N, R 28 & 29 E, W.M.

T 11043





Pump 7A. Point of diversion for certificates 76715, 79439 and part of 82441 involved in this transfer. Water used on "To" ground is metered at meter #08-03539-06.

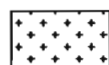
Cert. 82441 ground water from well #2 will be metered at meter #95-740-6 and pumped into Westland's canal here at pump 6E then conveyed down WID canal to pump 7A.

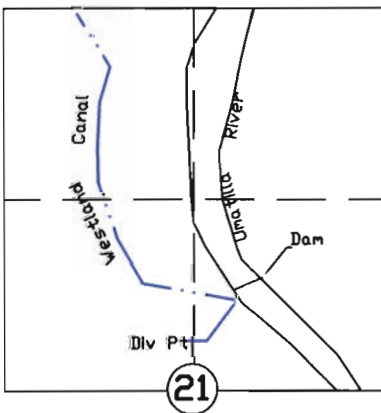
WELL #1 Located 270' South & 2540' West from the NE corner section 13, T3N, R28E, WM


WELL #2 Located 1450' South & 3160' West from the N 1/4 corner section 18, T3N, R29E, WM
 T3N., R 29E., W.M.

 Primary Cert. 76715 & Supplemental Cert. 79439

 Certificate 82441

 Certificate 82441 not involved in this transfer



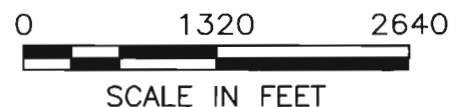
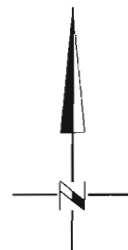
 Control Valve

RECEIVED

MAR 25 2010

This transfer is identical to district temporary transfers, 2008 T-10611 and 2009 T-10834

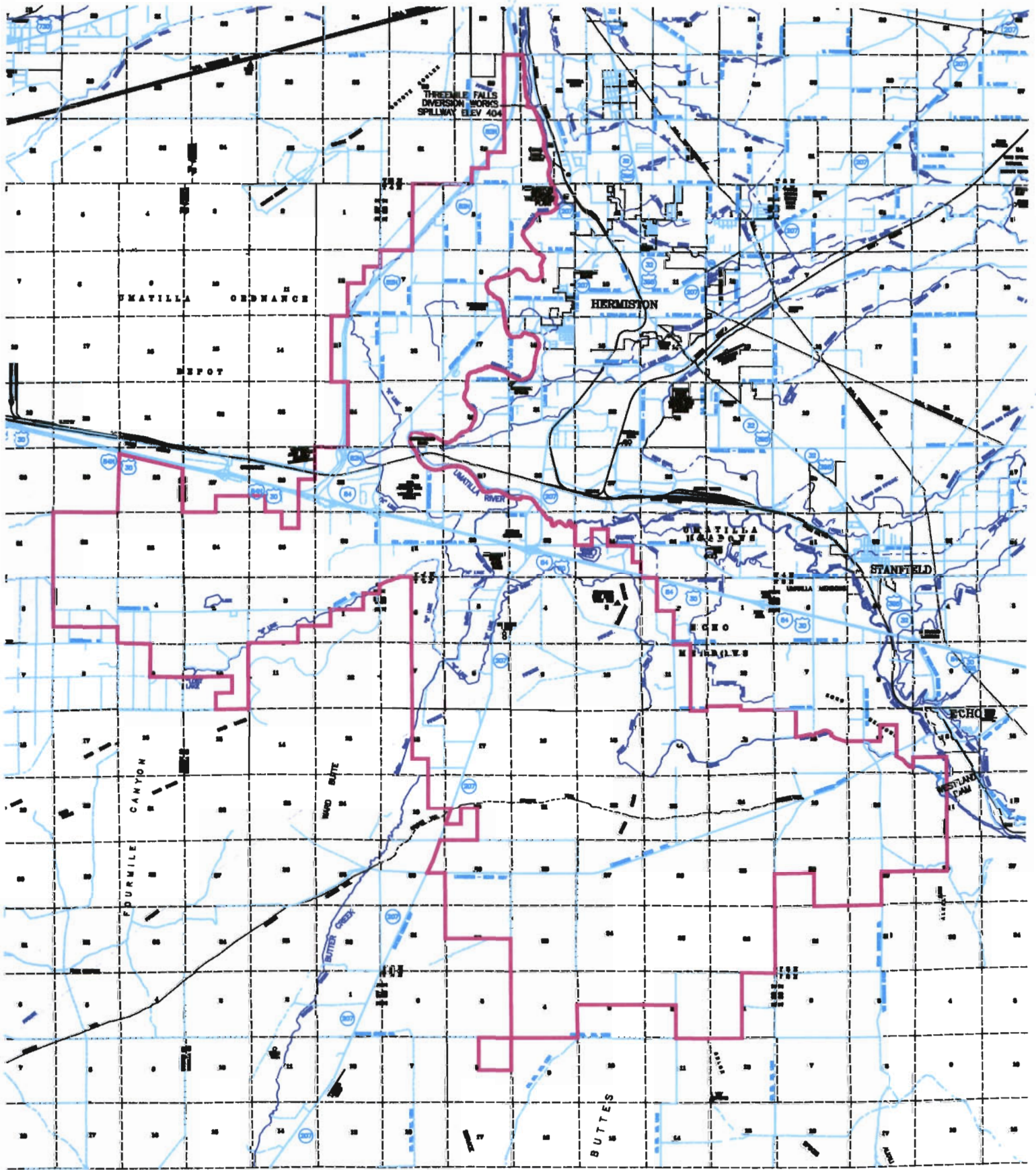
WATER RESOURCES DEPT
 SALEM, OREGON



T 11043

NOTE: THE PURPOSE OF THIS MAP IS TO IDENTIFY THE APPROXIMATE LOCATION OF THE WATER RIGHT. IT IS NOT INTENDED TO PROVIDE INFORMATION RELATIVE TO THE LOCATION OF PROPERTY OWNERSHIP BOUNDARY LINES.

Westland Irrigation District Boundary



LEGION: — DISTRICT BOUNDARY

RECEIVED

MAR 25 2010



WESTLAND IRRIGATION DISTRICT
SERVICE BOUNDARY

1 11043

WATER RESOURCES DEPT
SALEM, OREGON