

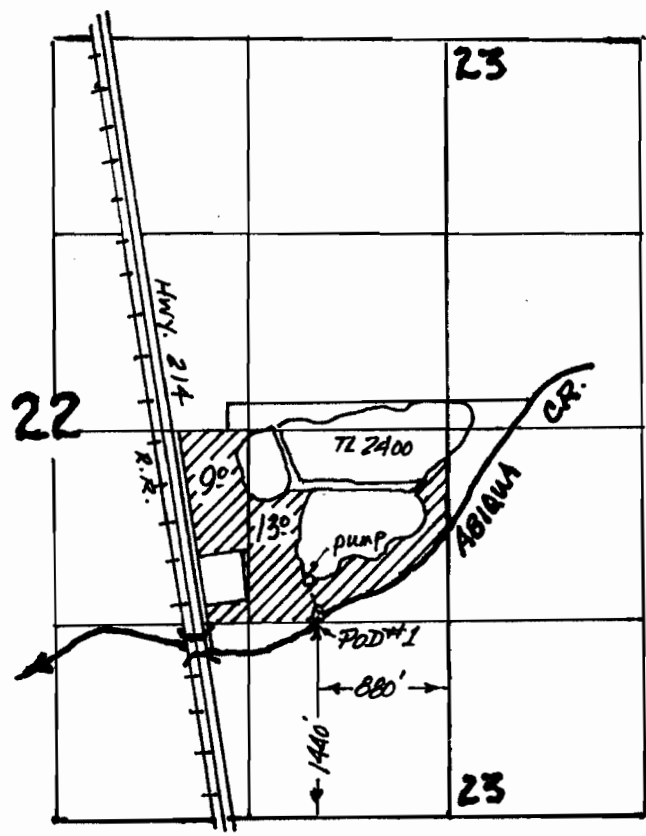
T.6. S., R. 1 W., W.M.

RECEIVED

APR 12 2010

WATER RIGHTS DIVISION  
CLERK OF COURT

N  
1" = 1320'



"FROM" LANDS

**TRANSFER APPLICATION MAP**  
For  
**COMMONWEALTH GROUP, LLC**  
Page 1 of 2

T 11061



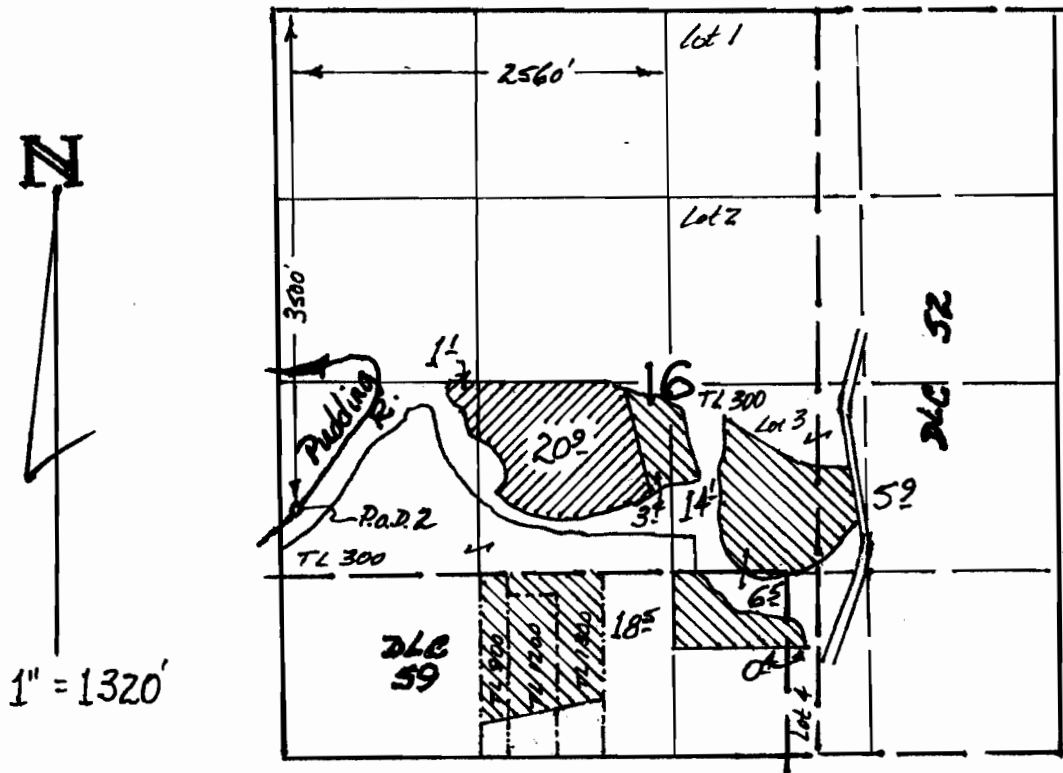
This map is for the purpose of identifying the location of water rights only, and is not intended to provide legal dimensions or locations of property lines.

RECEIVED

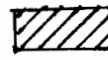
T.6. S., R. 1 W., W.M.

APR 12 2010

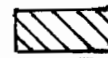
WATER RIGHTS DIVISION  
STATE OF OREGON



"To" LANDS



CERT. 6088



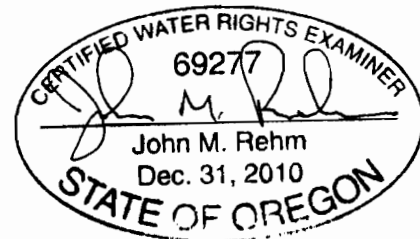
CERT. 35993

TRANSFER APPLICATION MAP

For

COMMONWEALTH GROUP, LLC

Page 2 of 2



This map is for the purpose of identifying the location of water rights only, and is not intended to provide legal dimensions or locations of property lines.