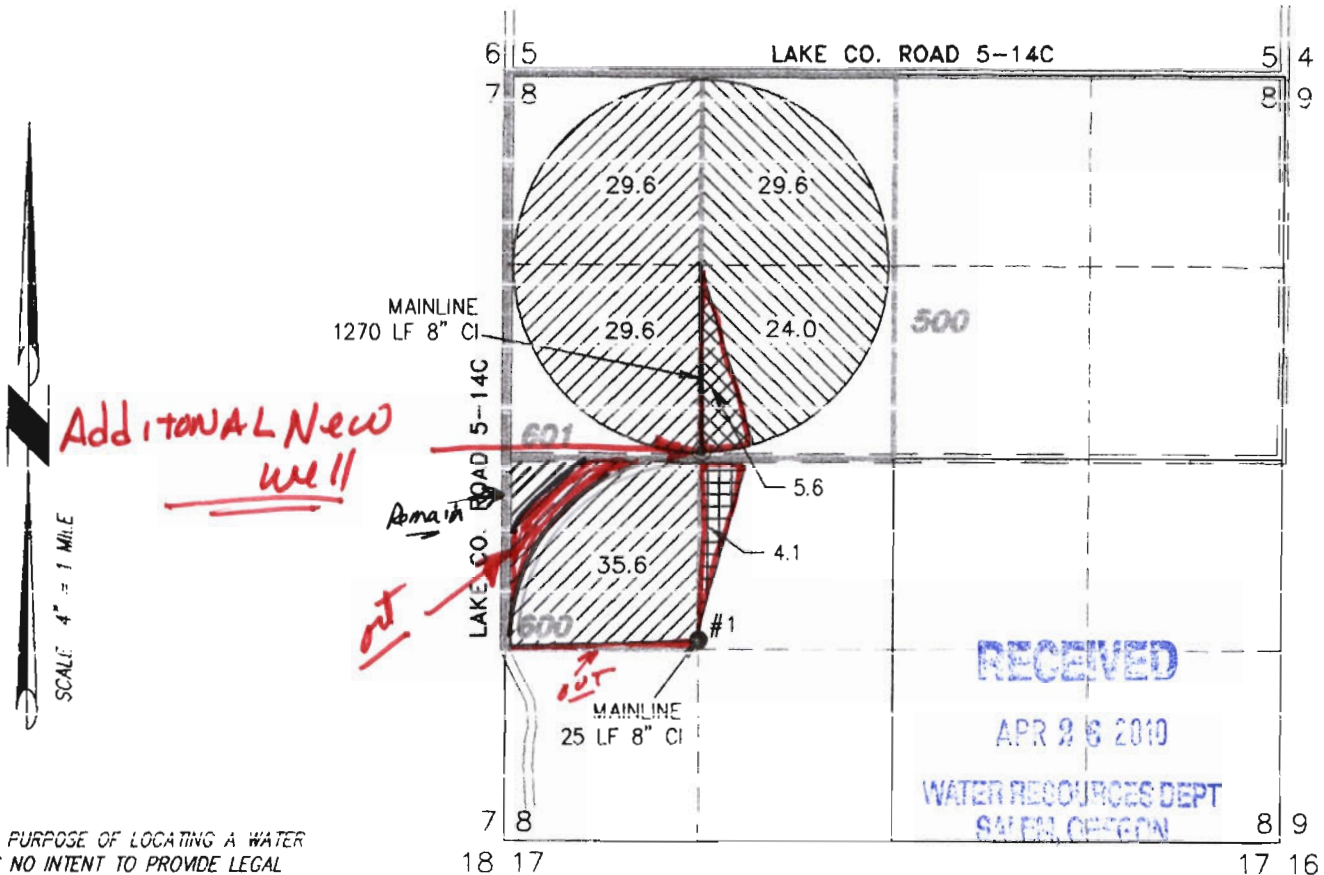


TEMPORARY TRANSFER
 TO ACCOMPANY APPLICATION
 TO CHANGE PLACE OF USE
 ADD A POINT OF APPROPRIATION
 FOR
 TIM WARKENTIN

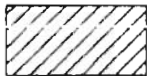
"TO"

"TO" TAX LOTS 500, 600, & 601
 IN SECTION 8, TOWNSHIP 26 SOUTH, RANGE 18 EAST, W.M.
 LAKE COUNTY, OREGON



MAP IS FOR THE PURPOSE OF LOCATING A WATER POINT ONLY AND HAS NO INTENT TO PROVIDE LEGAL VISIONS OR THE LOCATION OF PROPERTY LINES.

- PROPOSED WELL LOCATED IN THE SE 1/4 NW 1/4 SECTION 8, T26S R18E, W.M. LOCATED 2686 FEET NORTH AND 1344 FEET EAST FROM THE SW CORNER OF SECTION 8.
- #1 WELL LOCATED IN THE NW 1/4 SW 1/4 SECTION 8, T26S R18E, W.M. LOCATED 1380 FEET NORTH AND 1270 FEET EAST FROM THE SW CORNER OF SECTION 8.



104.5 ACRES WATER RIGHTS FROM CERTIFICATE #53454 (G-8876) TO REMAIN AS SHOWN.



53.6 ACRES WATER RIGHTS FROM CERTIFICATE #75740 (G-9233) TO REMAIN AS SHOWN.



5.6 ACRES WATER RIGHTS FROM CERTIFICATE #53454 (G-8876) TRANSFERRED AS SHOWN.



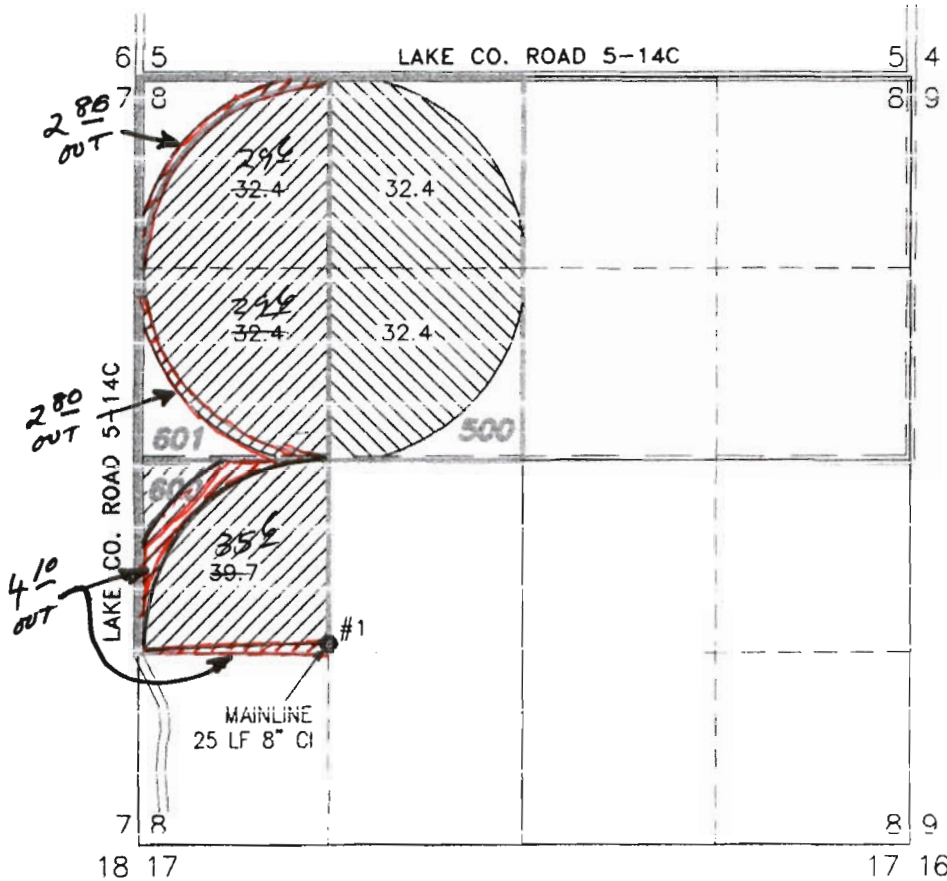
4.1 ACRES WATER RIGHTS FROM CERTIFICATE 53454 (G-8876) TRANSFERRED AS SHOWN.

T 11068

'From'

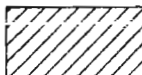

"FROM" TAX LOTS 500, 600, & 601
IN SECTION 8, TOWNSHIP 26 SOUTH, RANGE 18 EAST, W.M.
LAKE COUNTY, OREGON

TEMPORARY TRAN
MAP TO ACCOMPANY A
TO CHANGE PLACE
AND ADD A POINT OF AI
FOR
TIM WARKENT



THIS MAP IS FOR THE PURPOSE OF LOCATING A WA
RIGHT ONLY AND HAS NO INTENT TO PROVIDE LEGAL
DIMENSIONS OR THE LOCATION OF PROPERTY LINES.

● #1 WELL LOCATED IN THE NW 1/4 SW 1/4 SECTION 8, 126'S R18E, W.M. LOCATED
1380 FEET NORTH AND 1270 FEET EAST FROM THE SW CORNER OF SECTION 8.

-  ⁹⁷⁰ ACRES WATER RIGHTS FROM CERTIFICATE #53454
(G-8876), ~~AS SHOWN~~
-  64.8 ACRES WATER RIGHTS FROM CERTIFICATE #75740
(G-9233), AS SHOWN.

RECEIVED
APR 26 2010
WATER RESOURCES DEPT
SALEM, OREGON

T 11068