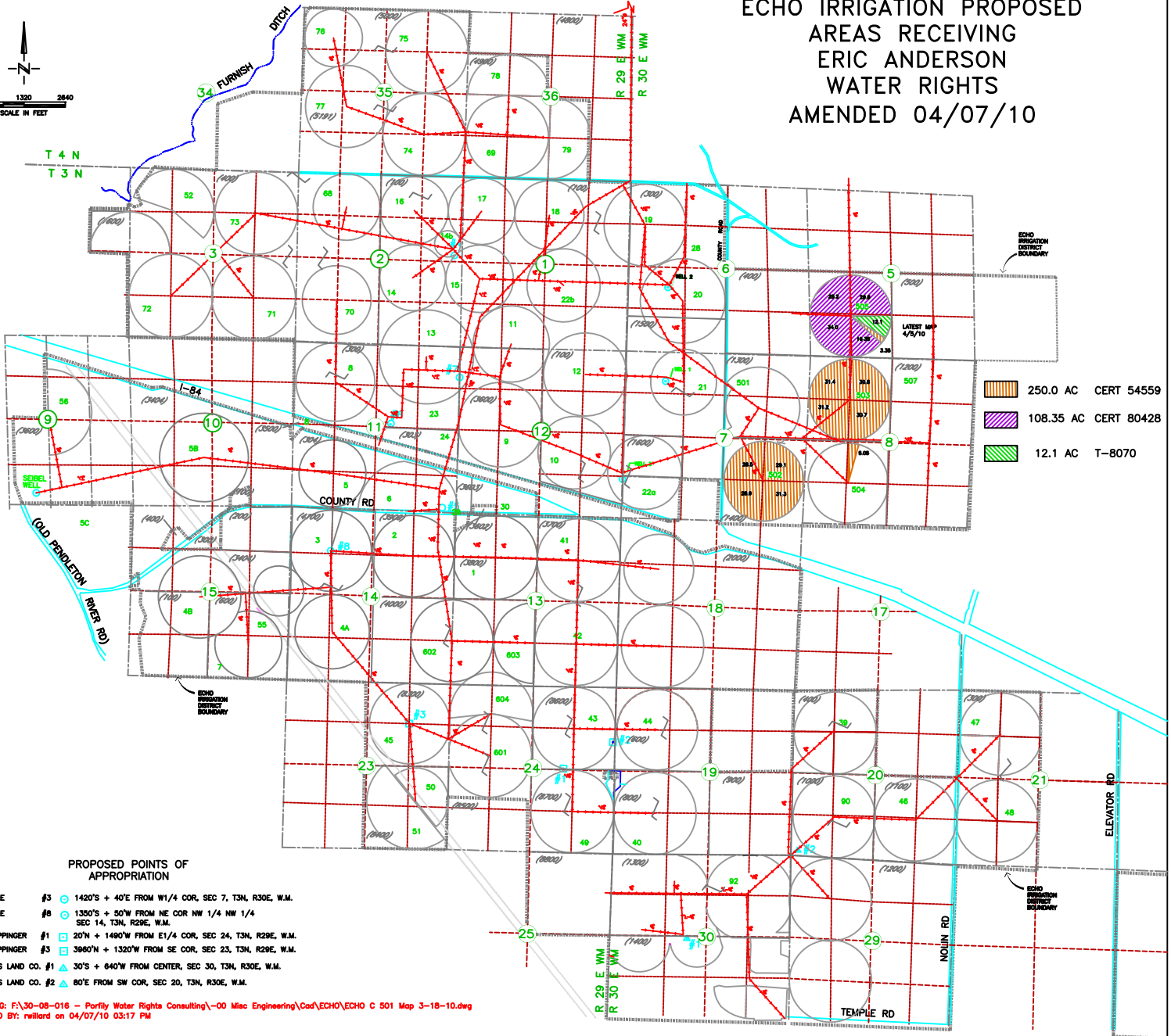
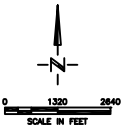


# ECHO IRRIGATION PROPOSED AREAS RECEIVING ERIC ANDERSON WATER RIGHTS AMENDED 04/07/10



### PROPOSED POINTS OF APPROPRIATION

- HALE #3  $\odot$  1420'S + 40'E FROM W1/4 COR, SEC 7, T3N, R30E, W.M.
- HALE #8  $\odot$  1350'S + 50'W FROM NE COR NW 1/4 NW 1/4 SEC 14, T3N, R29E, W.M.
- COPPINGER #1  $\square$  20'N + 1490'W FROM E1/4 COR, SEC 24, T3N, R29E, W.M.
- COPPINGER #3  $\square$  3960'N + 1320'W FROM SE COR, SEC 23, T3N, R29E, W.M.
- DITCHENS LAND CO. #1  $\triangle$  30'S + 640'W FROM CENTER, SEC 30, T3N, R30E, W.M.
- DITCHENS LAND CO. #2  $\triangle$  80'E FROM SW COR, SEC 20, T3N, R30E, W.M.

DRAWING: F:\30-08-016 - Porphy Water Rights Consulting\00 Misc Engineering\Cad\ECHO\ECHO C 501 Map 3-18-10.dwg  
 PRINTED BY: rwillard on 04/07/10 03:17 PM