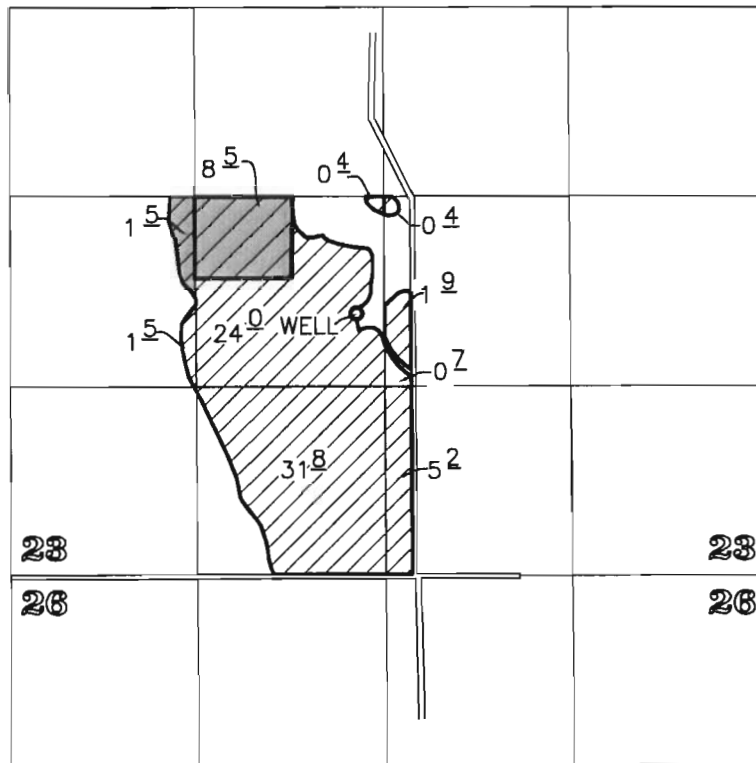




TRANSFER APPLICATION MAP
 T-11083
 T.5 S.,R.1E.,W.M.



WELL LOC: 1800' N. & 2800' W. FROM THE CORNER SEC 23

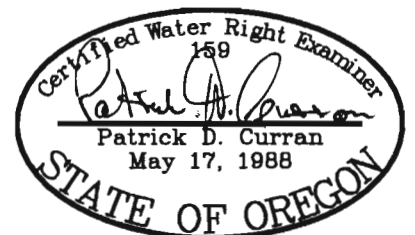
DISCLAIMER:
 THIS MAP IS NOT
 INTENDED TO PROVIDE
 LEGAL DIMENSIONS OR
 LOCATIONS OF
 PROPERTY OWNERSHIP
 LINES

 LAND TRANSFERRED "FROM"
 LAND REMAINING

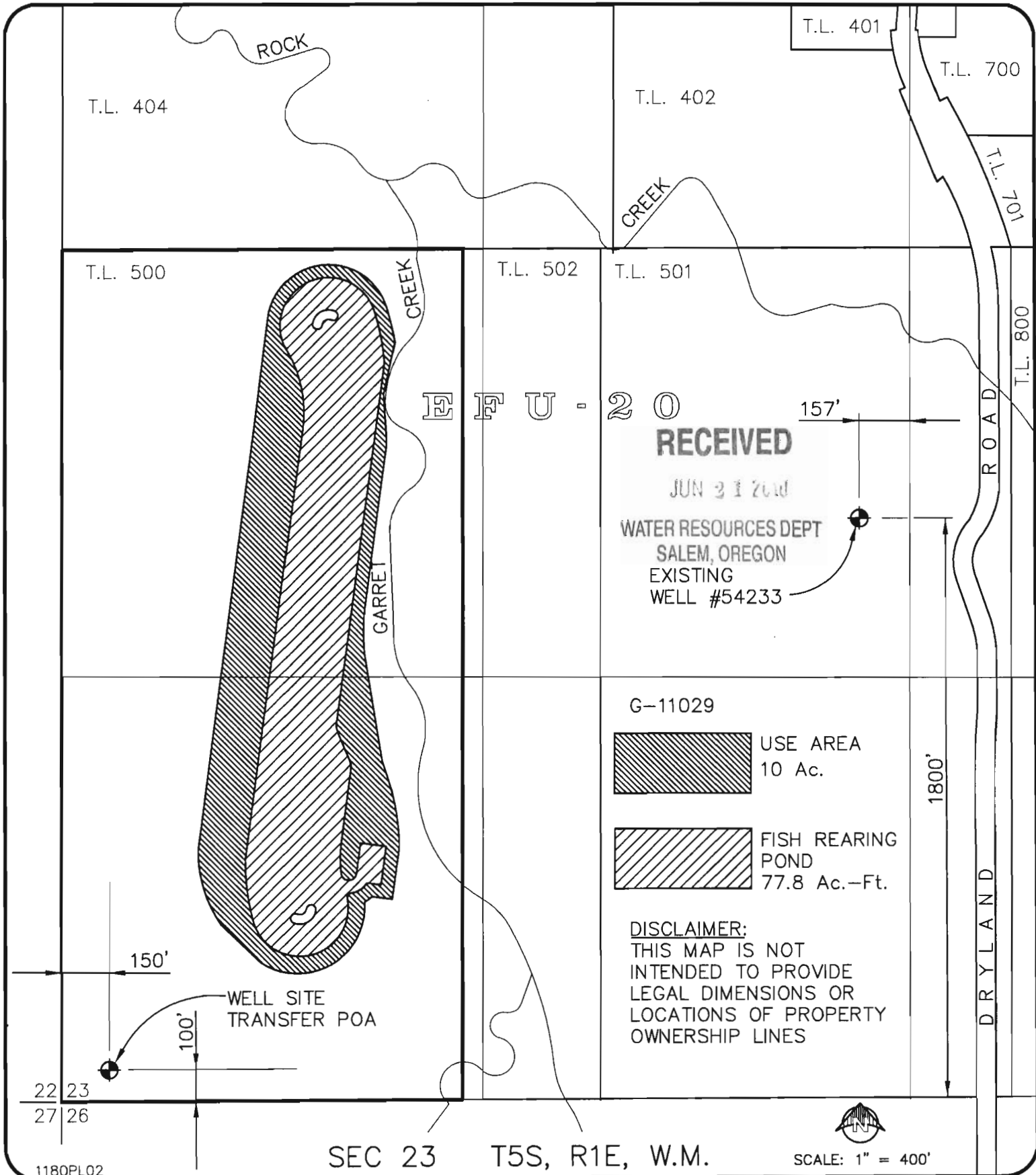
RECEIVED

JUN 21 2010

WATER RESOURCES DEPT
 SALEM, OREGON



CURRAN-McLEOD, INC.
 CONSULTING ENGINEERS



**PROPOSED
WELL LOCATION
POU/POA TRANSFER
CERT 54233**

J:\1180\dwg\1180PL03a.DWG, 6/17/2010 9:21:24 AM



**CURRAN-McLEOD, INC.
CONSULTING ENGINEERS**

6655 S.W. HAMPTON ST., SUITE 210
PORTLAND, OREGON 97223
PHONE (503) 684-3478