

SEC. 15 T.39S. R.19E. W.M.
LAKE COUNTY

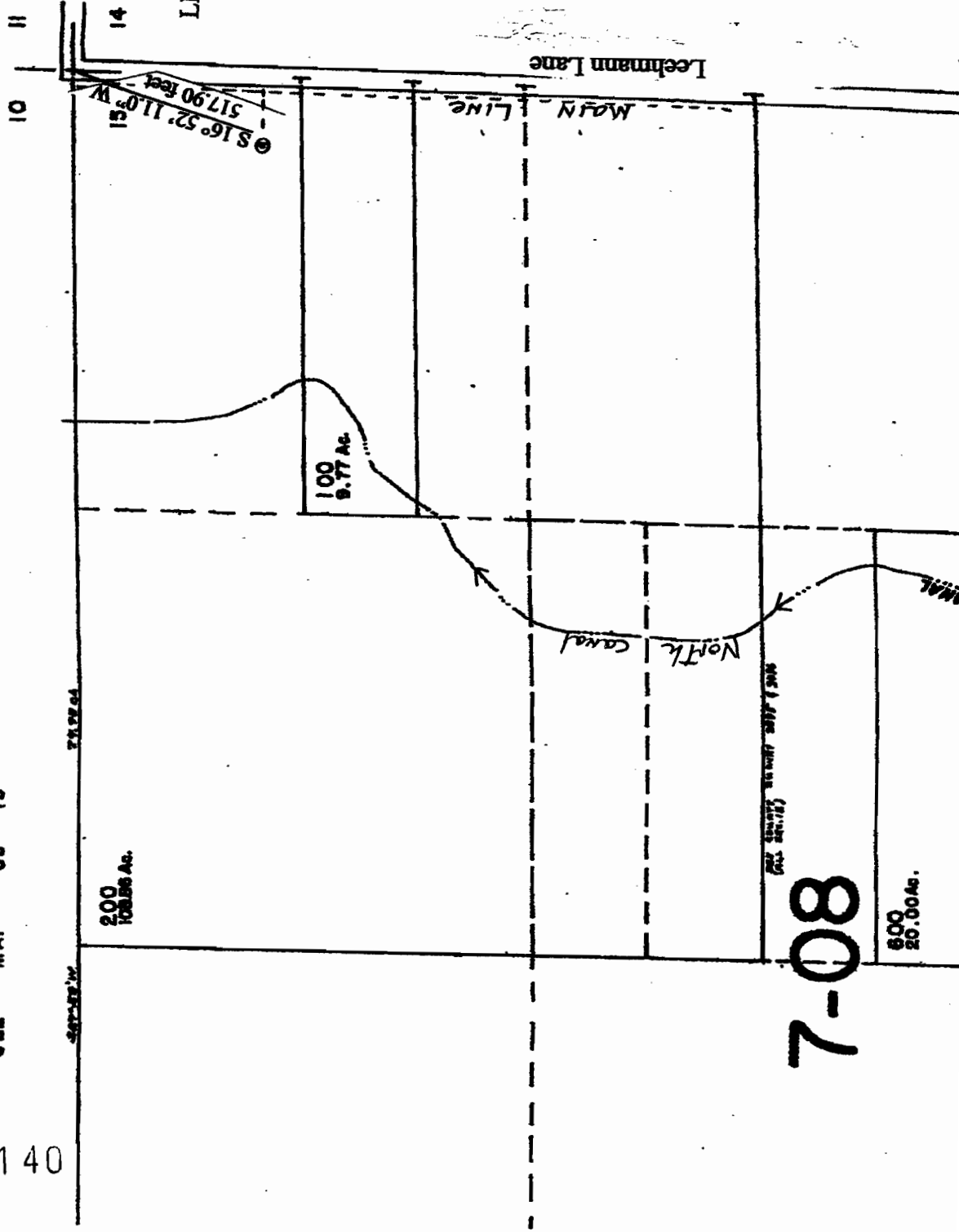
39 19 15

T 11140

1"=400'

SEE MAP 39 19

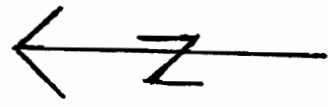
RECORDED
OCT 04 2010
WATER RIGHTS REPORT



LEGEND:

- ⊗ Additional well
S 16° 52' 11.0" W
A distance of 517.90 feet
from the NE corner of Section 15
T39S R19E WM

SCALE 1" = 400 feet



39 19 14

7-08

200
102.86 Ac.

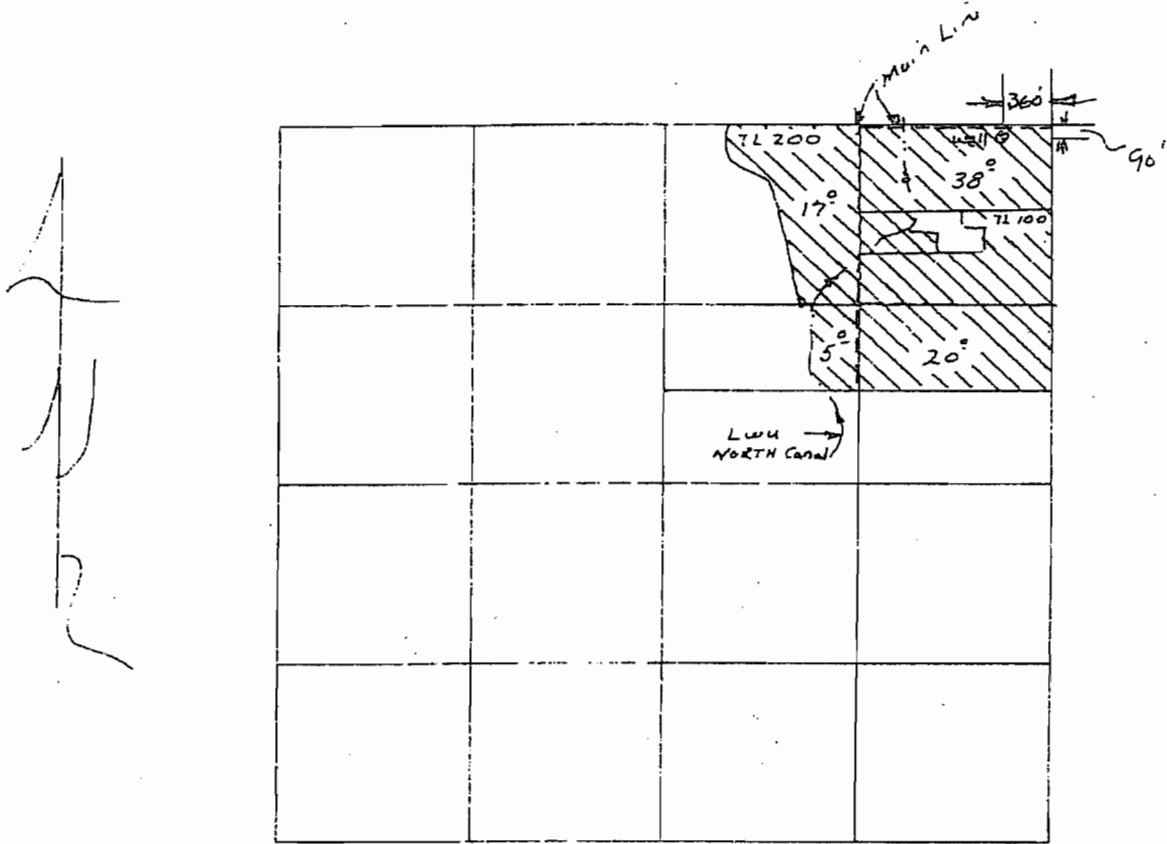
100
9.77 Ac.

600
20.00 Ac.

Amended map for well proposed location
AUGUST 2007

T 39 S, R 19 E, WM
SECTION 15

Application G-17124



Well Located 90' S, 360' W from the NE Corner
SEC 15.

SCALE 1" = 1320'

NOTE:

No change to existing place of
use or POA.

T 11140

RECEIVED

OCT 04 2010

WATER RESOURCES DEPT
SALEM, OREGON

RECEIVED

SEP 02 2009

WATER RESOURCES DEPT
SALEM, OREGON