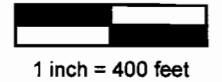


**W/2 of NE/4 of SEC 24
T6N, R35E, WM
Umatilla County**



- ⊙ **Point of Diversion (Authorized)**
 POD 1 located in the SE/4 NE/4, Section 24, 1660 feet S and 1360 feet E from N/4 Corner of Section 24.

 POD 2 located in the NE/4 NE/4, Section 24, 915 feet S and 1420 feet E from N/4 Corner of Section 24.
- ⊕ **Point of Appropriation (Proposed)**
 POA 1 is groundwater well (alluvial aquifer) located in the NW/4 NE/4 of Section 24, 1260 feet S and 720 feet E from N/4 Corner of Section 24. Well Log UMAT 4461. Used since 1987 (23 yrs).

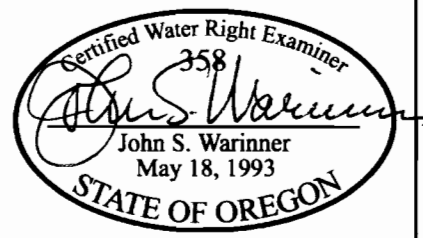
- Place of Use (Included)**
6.8 acres in SW NE of Section 24 (TL 400)
- Place of Use (Not Included)**
18.06 acres, including:
11.06 acres in SW NE of Section 24
7.0 acres in NW SE of Section 24

OCT 14 2010

The purpose of this map is to identify the location of a water right. It is not intended to provide information regarding the location of property boundary lines.

FOUNTAINHEAD
1204 Alvarado Terrace
Walla Walla, WA 99362
509.529.2646 phone

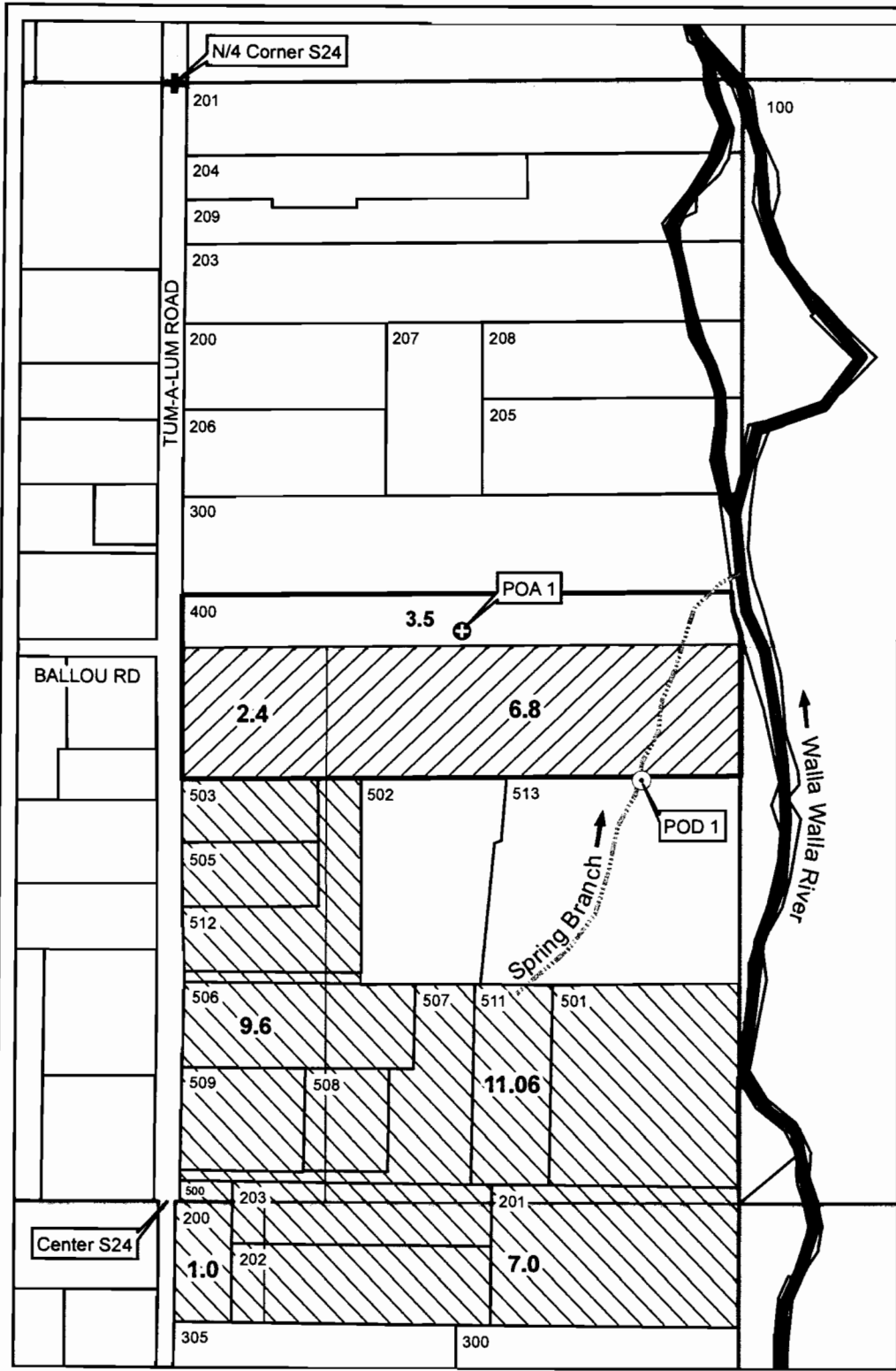
T 11144



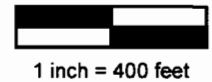
**TRANSFER MAP
POD to Historic POA
Certificate 80904**

in the name of
DALE WOOD

Revised 14 JUL 2010



**W/2 of NE/4 of SEC 24
T6N, R35E, WM
Umatilla County**



- ⊙ **Point of Diversion (Authorized)**
POD 1 located in the SE/4 NE/4, Section 24, 325 feet S and 227 feet W from NE Corner of SW/4 NE/4 of Section 24.
- ⊕ **Point of Appropriation (Proposed)**
POA 1 is groundwater well (alluvial aquifer) located in the NW/4 NE/4 of Section 24, 1260 feet S and 720 feet E from N/4 Corner of Section 24. Well Log UMAT 4461. Used since 1987 (23 yrs).

Place of Use (Included)
2.4 acres in SW NE of Section 24 (TL 400) - PRIMARY
6.8 acres in SW NE of Section 24 (TL 400) - SUPPLEMENTAL

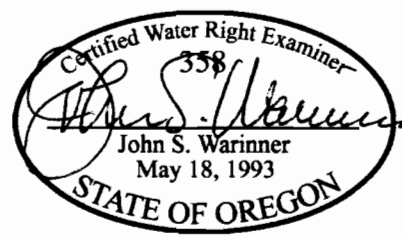
Place of Use (Not Included)
9.6 acres in SW NE of Section 24 - PRIMARY
11.06 acres in SW NE of Section 24 - SUPPLEMENTAL
1.0 acre in NW SE of Section 24 - PRIMARY
7.0 acres in NW SE of Section 24 - SUPPLEMENTAL

OCT 14 2010

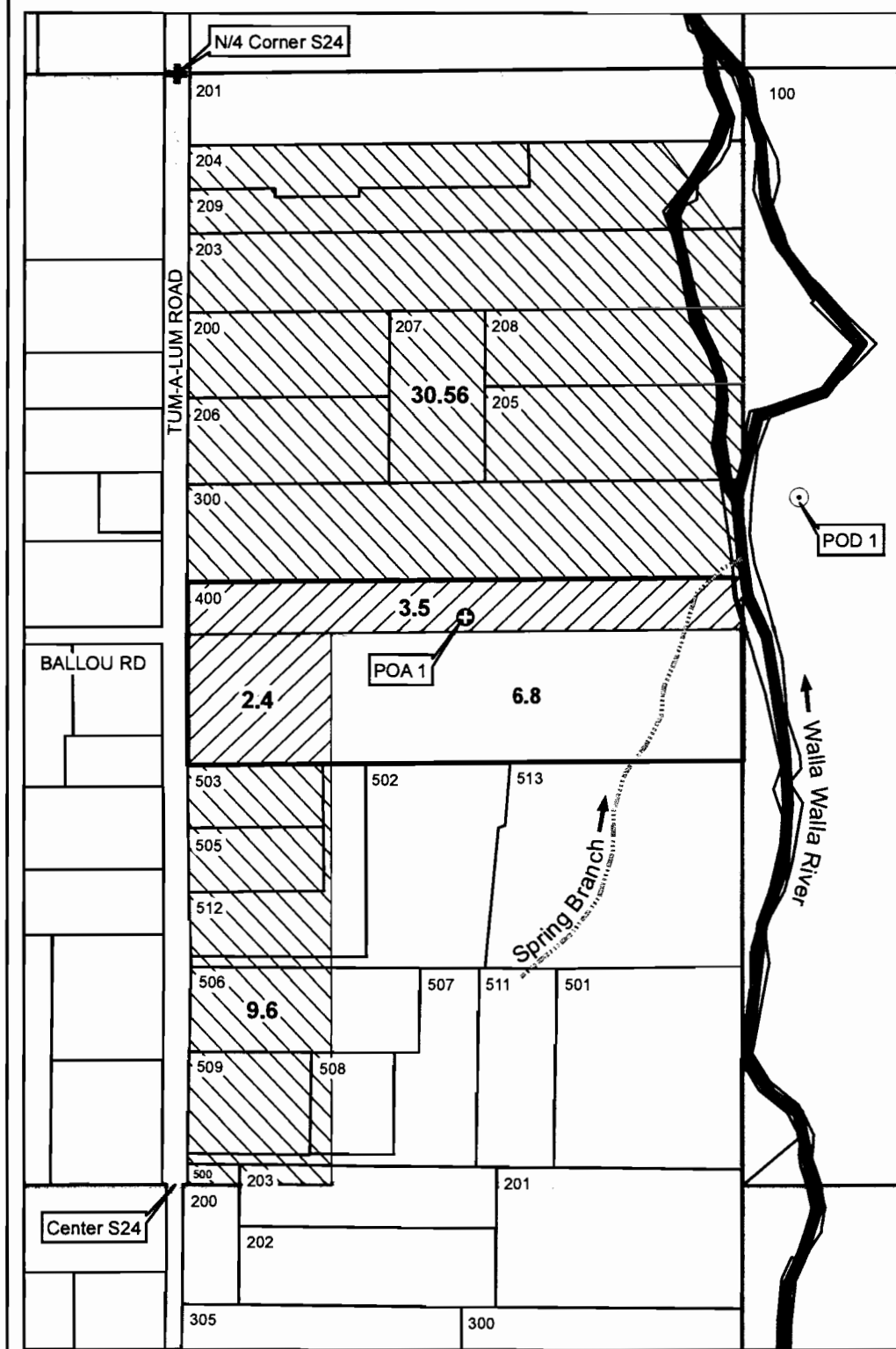
The purpose of this map is to identify the location of a water right. It is not intended to provide information regarding the location of property boundary lines.

FOUNTAINHEAD
1204 Alvarado Terrace
Walla Walla, WA 99362
509.529.2646 phone

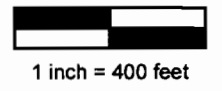
11144



**TRANSFER MAP
POD to Historic POA
Certificate 80905**
in the name of
DALE WOOD
Revised 14 JUL 2010



**W/2 of NE/4 of SEC 24
T6N, R35E, WM
Umatilla County**



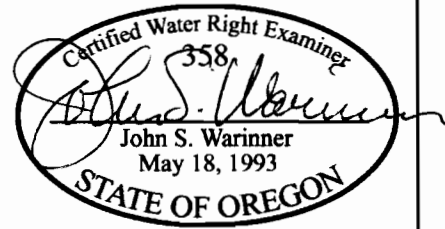
- **Point of Diversion (Authorized)**
POD 1 located in the NE/4 NE/4, Section 24, T6N, R35E, WM.
Specific coordinates not described on certificate or maps.
- ⊕ **Point of Appropriation (Proposed)**
POA 1 is groundwater well (alluvial aquifer) located in the NW/4 NE/4 of Section 24, 1260 feet S and 720 feet E from N/4 Corner of Section 24. Well Log UMAT 4461. Used since 1987 (23 yrs).
- Place of Use (Included)**
3.5 acres in NW NE of Section 24 (TL 400) - SUPPLEMENTAL
2.4 acres in SW NE of Section 24 (TL 400) - SUPPLEMENTAL
- Place of Use (Not Included)**
30.56 acres in NW NE of Section 24 - SUPPLEMENTAL
9.6 acres in SW NE of Section 24 - SUPPLEMENTAL

OCT 14 2010

The purpose of this map is to identify the location of a water right. It is not intended to provide information regarding the location of property boundary lines.

FOUNTAINHEAD
1204 Alvarado Terrace
Walla Walla, WA 99362
509.529.2646 phone

11144



TRANSFER MAP
POD to Historic POA
Certificate 33395

in the name of
DALE WOOD

Revised 14 JUL 2010