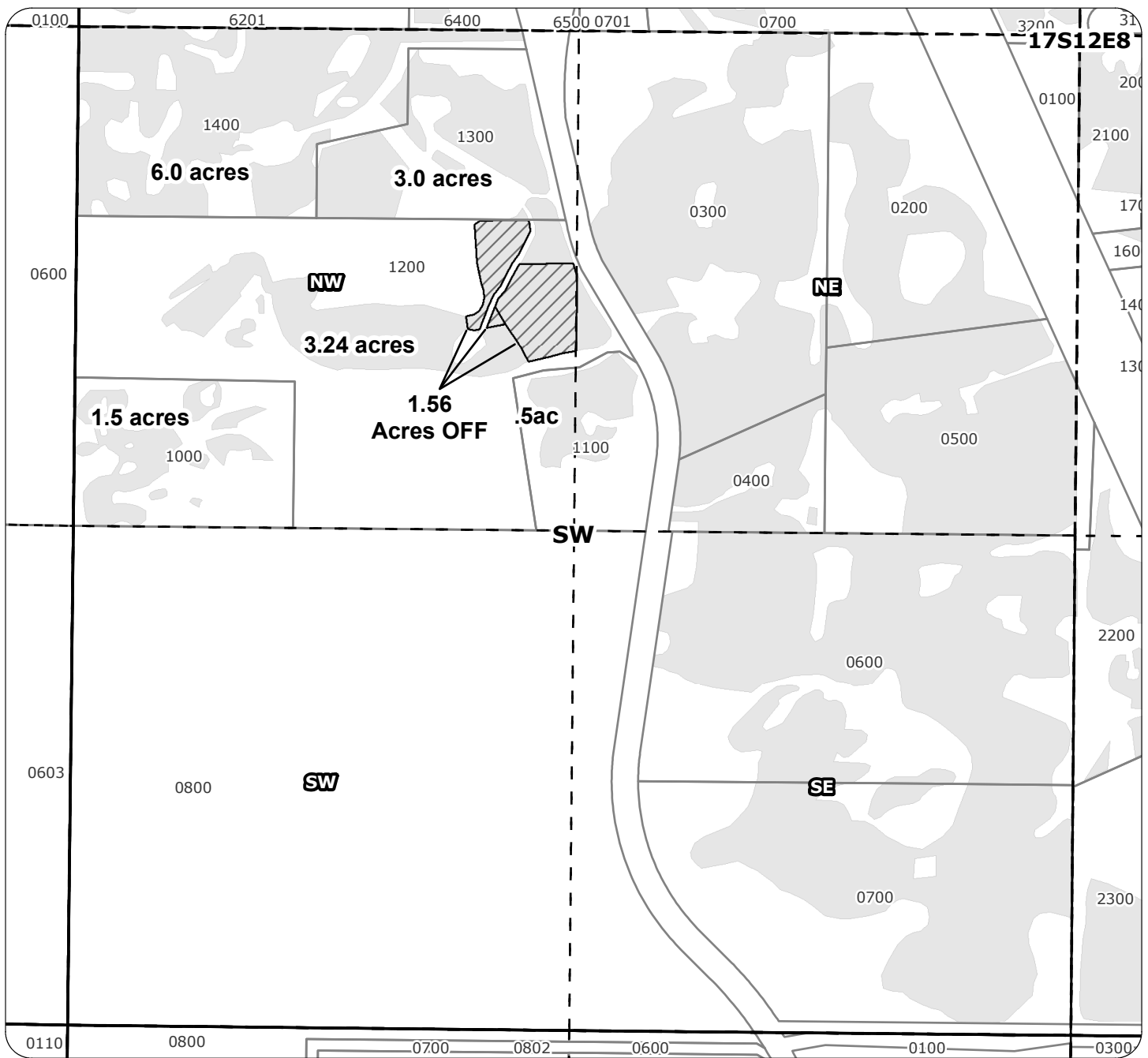
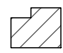



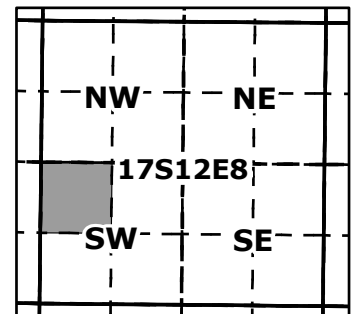
2010 Swalley Irrigation District Transfer Map



Application for Permanent District Transfer - Cert 74145

-  OFF
-  Water Rights

for
 Ray Ruppel
 Taxlot 01200- 1.56 Acres OFF
 in 17S12E8NWSW
 Total Remaining Water Right
 in Taxlot 01200- 3.24 Acres
 in 17S12E8NWSW
 No change in taxlot from 3111 map



1 inch equals 400 feet

