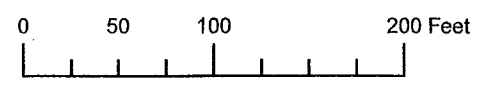


RED FOR USE ONLY



# SW 1/4 NW 1/4 SECTION 26 T02N R10E WM HOOD RIVER COUNTY

1" = 100'

Transfer To  
C.81340 0<sup>25</sup> ac.

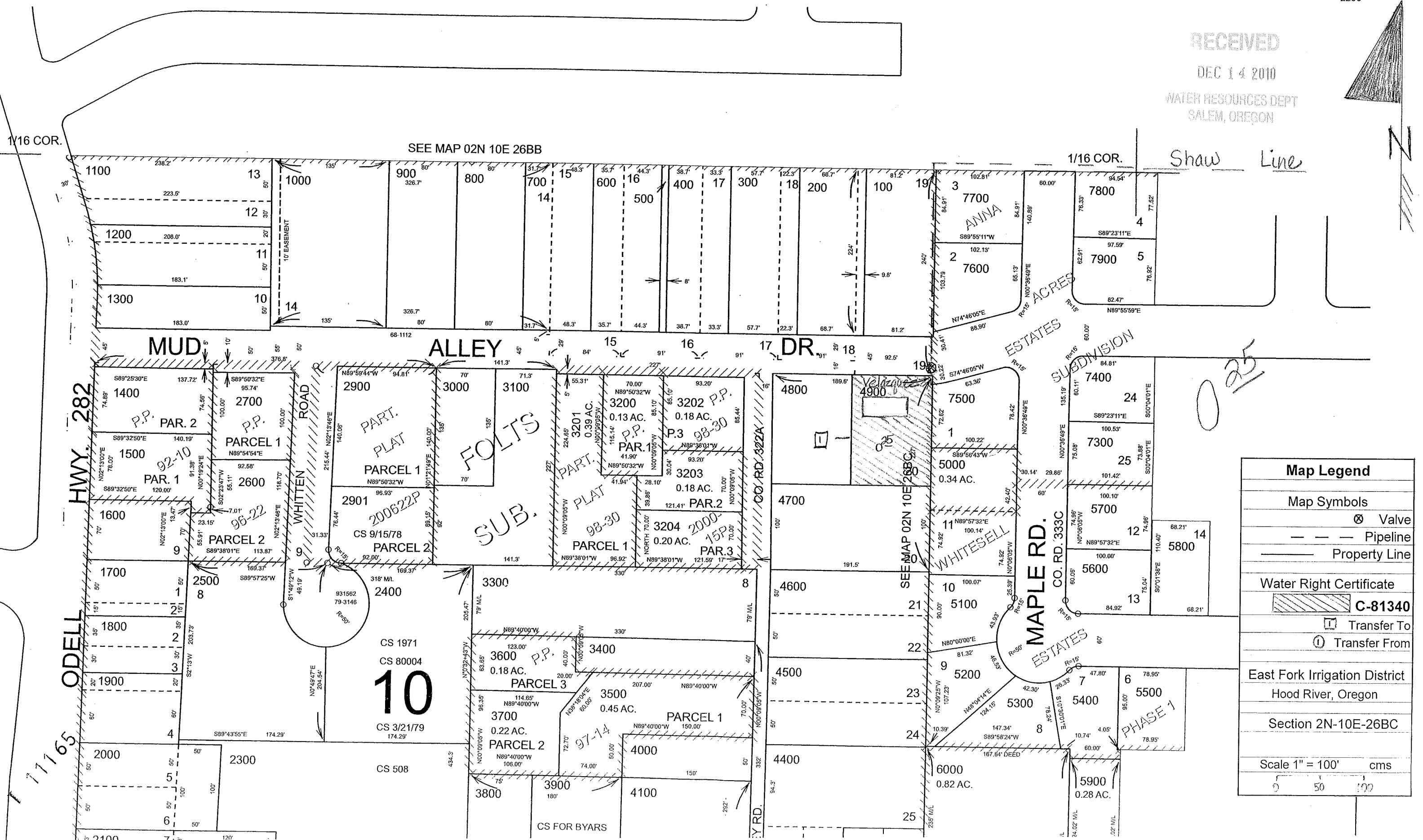
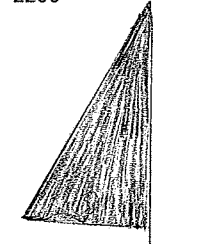
## 02N 10E 26 B

CANCELLED NOS.  
2800  
2200

RECEIVED

DEC 14 2010

WATER RESOURCES DEPT  
SALEM, OREGON



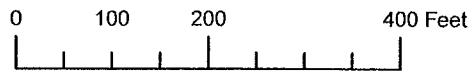
0<sup>25</sup>

Map Legend	
Map Symbols	
	Valve
	Pipeline
	Property Line
Water Right Certificate	
	C-81340
	Transfer To
	Transfer From
East Fork Irrigation District Hood River, Oregon	
Section 2N-10E-26BC	
Scale 1" = 100' cms	





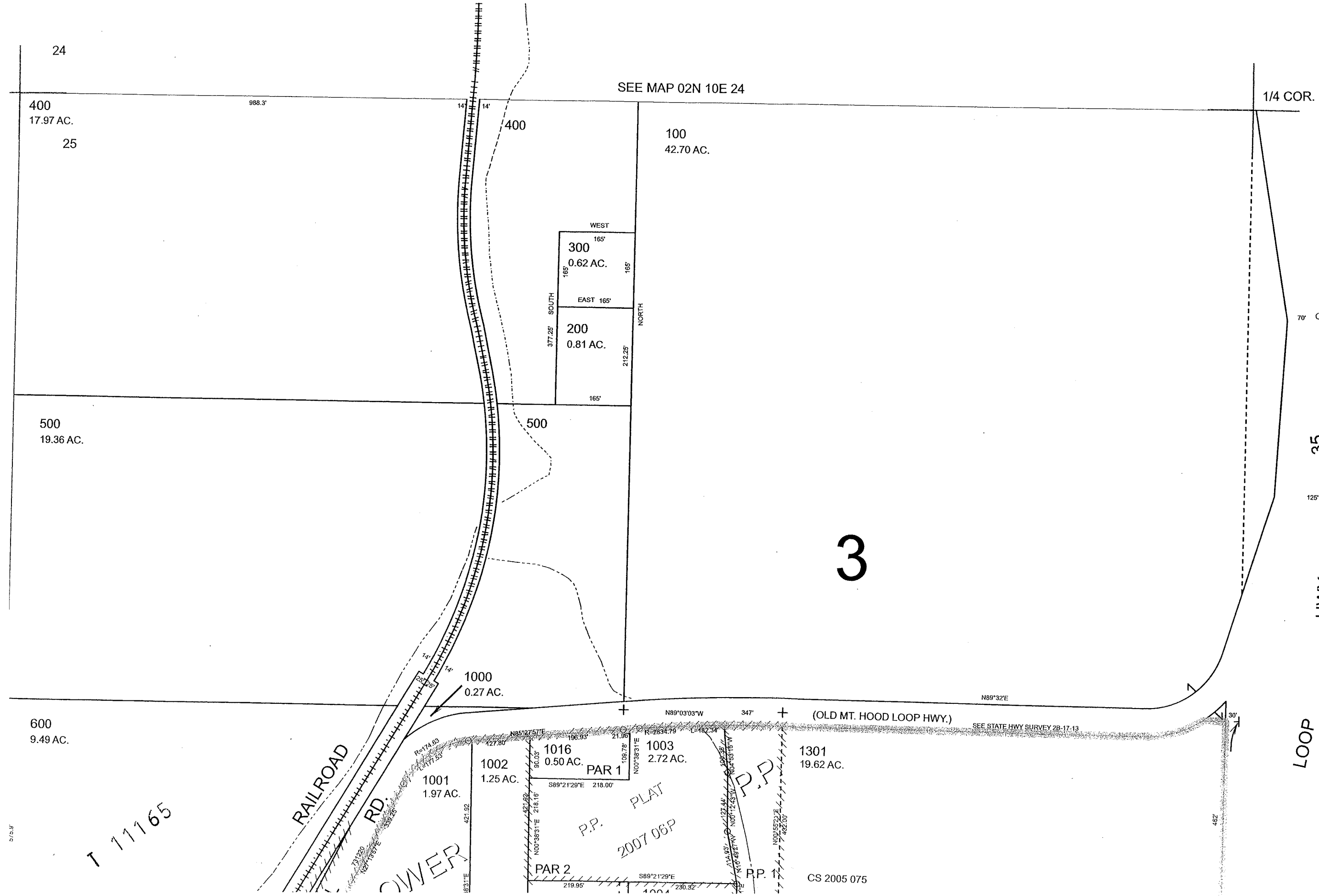
PARED FOR  
POSE ONLY



# NW 1/4 SECTION 25 T02N R10E WM HOOD RIVER COUNTY

1" = 200'

**02N 10E 25**  
CANCELLED NOS.  
1200  
1300  
1303  
1400  
1500



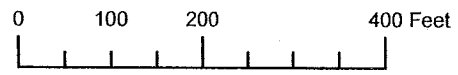
RECEIVED  
DEC 14 2010  
WATER RESOURCES DEPT  
SALEM, OREGON

SEE MAP 02N 10E 25

T 11165

CS 2005 075

THIS MAP WAS PREPARED FOR ASSESSMENT PURPOSE ONLY



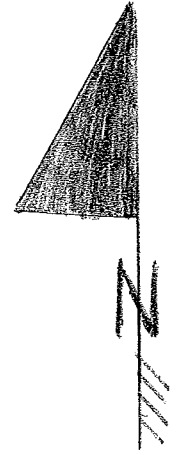
# S.E. 1/4 SEC. 13 T.2N. R.10E. W.M. HOOD RIVER COUNTY

1" = 200'

Transfer From  
C.B1340 0.25 ac.

02N10

CAN  
1  
1  
1



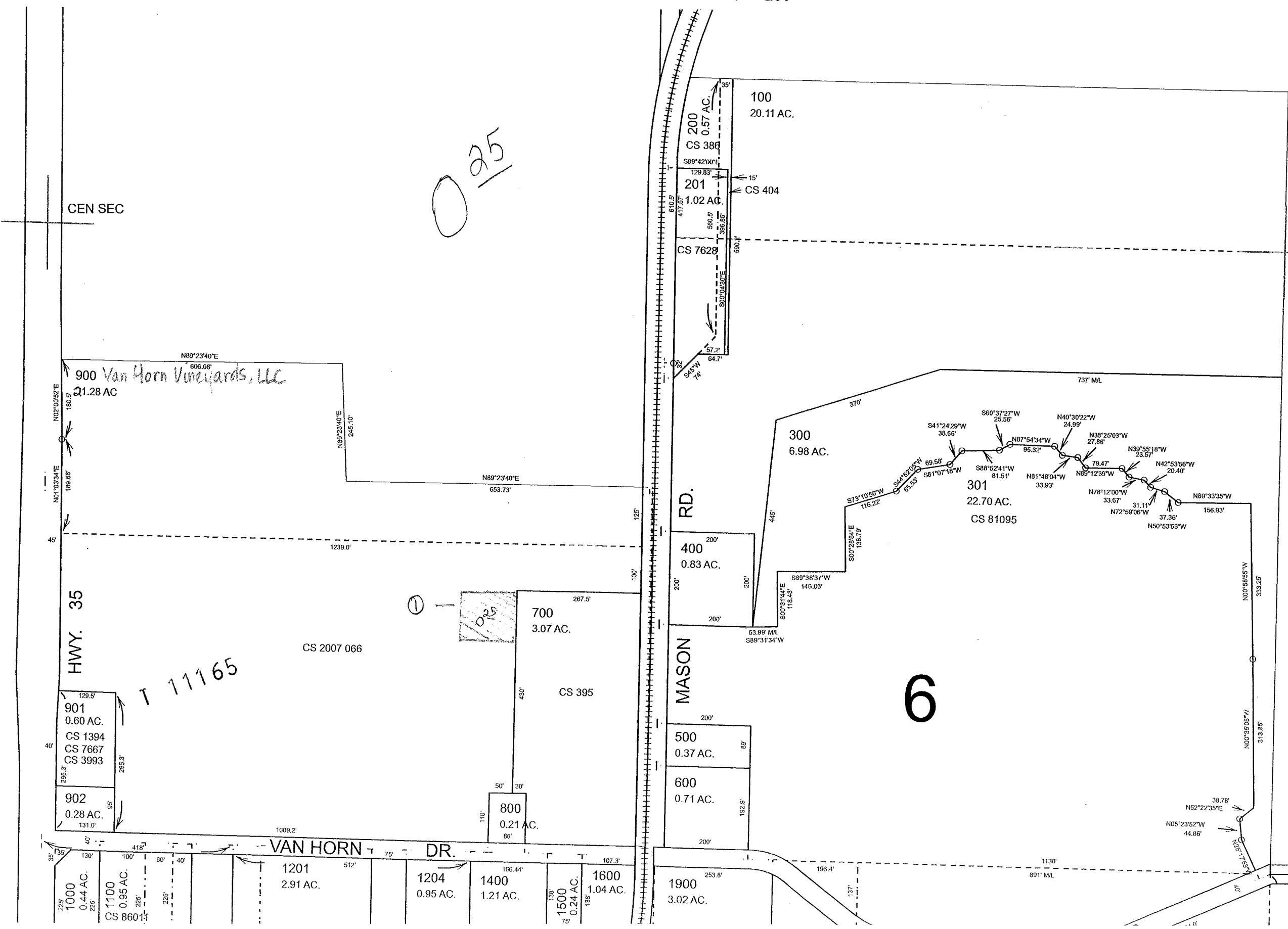
0.25

RECEIVED

DEC 14 2010

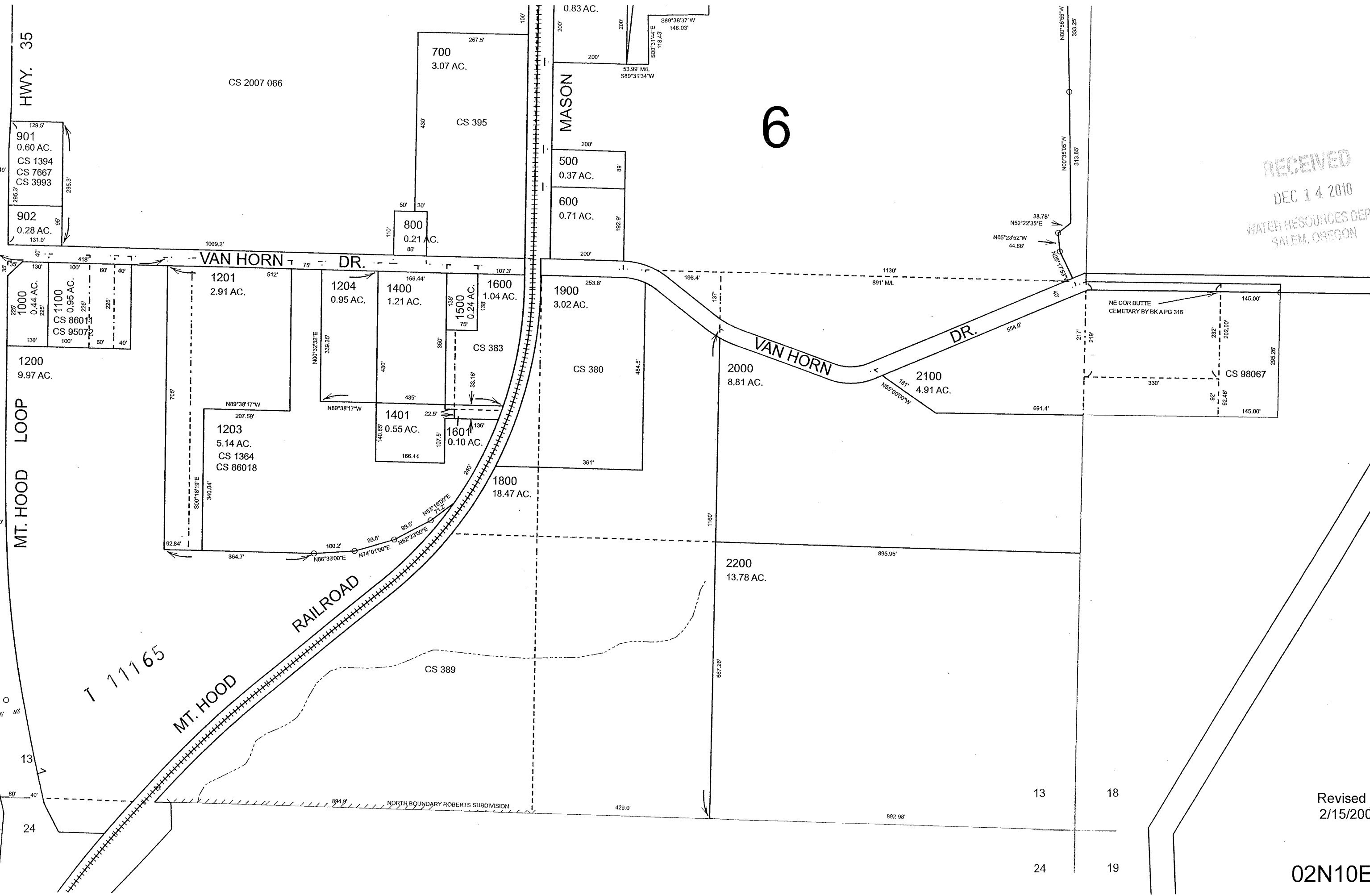
WATER RESOURCES DEPT  
SALEM, OREGON

Map Legend	
Map Symbols	
	Valve
	Pipeline
	Property Line
Water Right Certificate	
	C-81340
	Transfer To
	Transfer From
East Fork Irrigation District Hood River, Oregon	
Section 2N-10E-13D	
Scale 1" = 200' cms	



6

NE COR BUTTE  
CEMETARY BY BK A PG 315



HWY. 35

MT. HOOD LOOP

6

VAN HORN DR.

VAN HORN DR.

MT. HOOD RAILROAD

CS 2007 066

901 0.60 AC. CS 1394 CS 7667 CS 3993

902 0.28 AC.

700 3.07 AC. CS 395

0.83 AC.

500 0.37 AC.

600 0.71 AC.

800 0.21 AC.

1000 0.44 AC. CS 8601 CS 9507

1100 0.95 AC.

1201 2.91 AC.

1203 5.14 AC. CS 1364 CS 86018

1204 0.95 AC.

1400 1.21 AC.

1401 0.55 AC.

1500 0.24 AC.

1600 1.04 AC.

1601 0.10 AC.

1800 18.47 AC.

1900 3.02 AC.

CS 380

2000 8.81 AC.

2100 4.91 AC.

2200 13.78 AC.

CS 383

CS 389

NE COR BUTTE CEMETARY BY BKA PG 315

CS 98067

NORTH BOUNDARY ROBERTS SUBDIVISION

RECEIVED  
DEC 14 2010  
WATER RESOURCES DEPT  
SALEM, OREGON

Revised JB  
2/15/2008

02N10E13D

13 18  
24 19