

# DESCHUTES COUNTY SEC.14 T14S R13E

SCALE - 1" = 400'



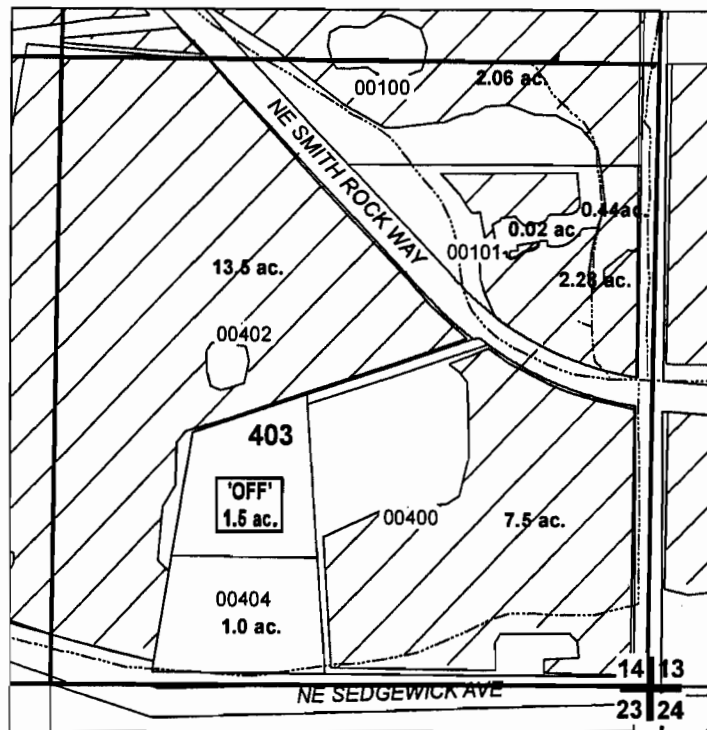
SE 1/4 OF THE SE 1/4

RECEIVED

DEC 21 2010

WATER RIGHTS DEPT  
STATION

DISTRICT INTERNAL  
NOTICE #: T-2010-004



T 11172

"OFF" MAP

# ac.	'OFF' LAND PARCELS
	EXISTING WATER RIGHTS
# ac.	PARCELS W/ WATER RIGHTS



APPLICATION FOR TEMPORARY WATER RIGHTS TRANSFER

COID / PHILIP & PENELOPE KNIGHT

TAXLOT #: 403

1.5 ACRES

DATE: 09-14-10

FILE: E:\TRANSFERWRTRANS10\141314\_SESE

# DESCHUTES COUNTY SEC.16 T14S R13E

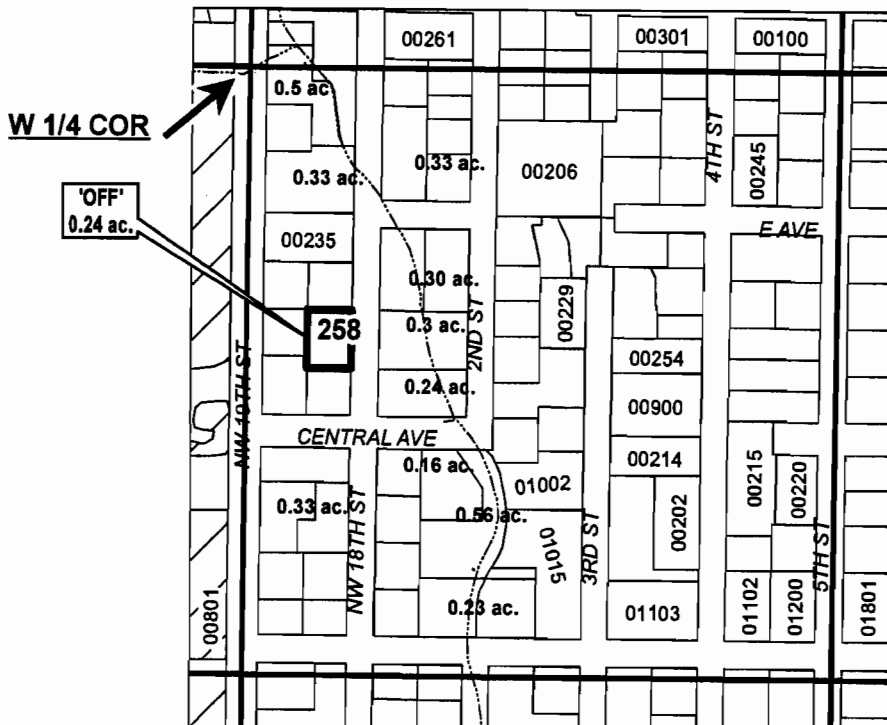
SCALE - 1" = 400'



NW 1/4 OF THE SW 1/4

RECEIVED  
DEC 21 2010  
CLERK OF COUNTY  
DESCHUTES COUNTY

DISTRICT INTERNAL  
NOTICE #: T-2010-004



W 1/4 COR

'OFF'  
0.24 ac.

T 11172

"OFF" MAP

# ac.	'OFF' LAND PARCELS
# ac.	PARCELS W/ WATER RIGHTS



## APPLICATION FOR TEMPORARY WATER RIGHTS TRANSFER

COID / PHILIP & PENELOPE KNIGHT

TAXLOT #:258

0.24 ACRES

DATE: 09-14-10

FILE: I:\TRANSFER\WRTRANS\10T-2010-004\141316\_NWSW

# DESCHUTES COUNTY SEC.16 T14S R13E

SCALE - 1" = 400'

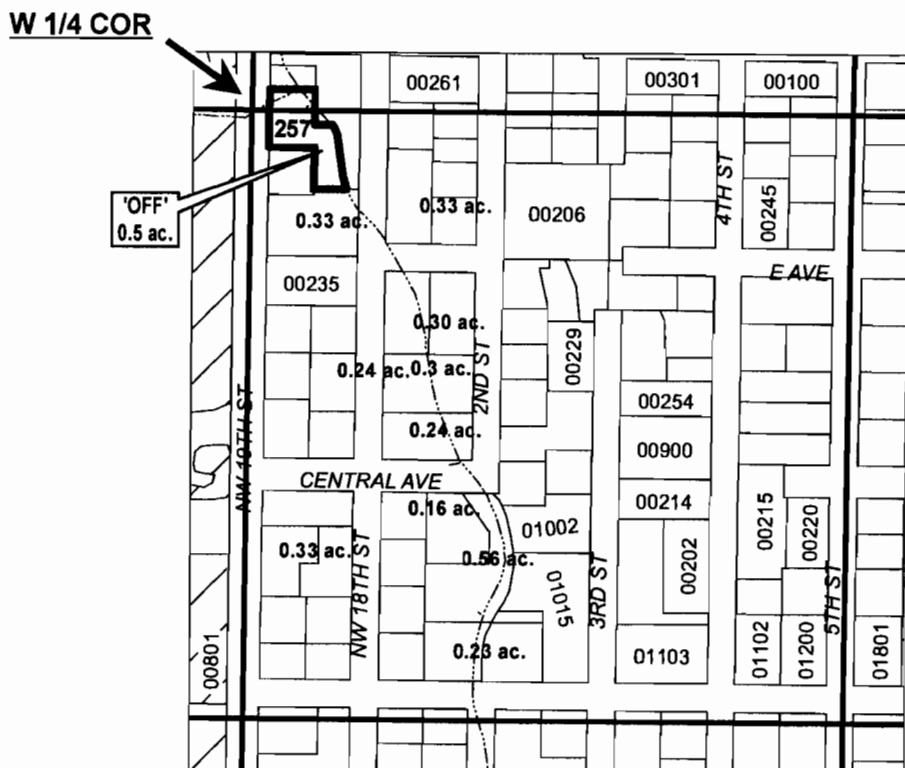


DEC 21 2010

PLANNING & COMMUNITY DEVELOPMENT  
DEPARTMENT

NW 1/4 OF THE SW 1/4

DISTRICT INTERNAL  
NOTICE #: T-2010-026



"OFF" MAP

# ac.	'OFF' LAND PARCELS
# ac.	PARCELS W/ WATER RIGHTS



## APPLICATION FOR WATER RIGHTS TRANSFER

COID / TIMOTHY W. & TANA C. FLEWELLING

TAXLOT #:257

0.5 ACRES

DATE: 12-02-10

FILE: I:\TRANSFER\WR\TRANS10\1141316\_NWSW\_026

111172

# DESCHUTES COUNTY SEC.16 T14S R13E

SCALE - 1" = 400'

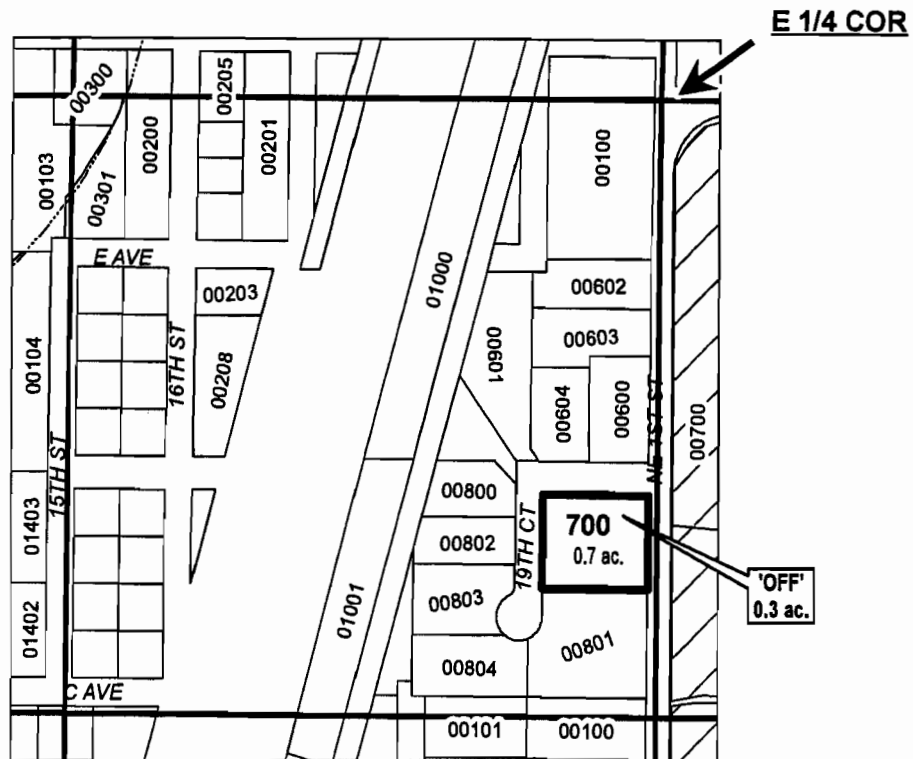


NE 1/4 OF THE SE 1/4

DEC 21 2010

PLANNING & DEVELOPMENT  
COUNTY CLERK'S OFFICE

DISTRICT INTERNAL  
NOTICE #: T-2010-004



"OFF" MAP

# ac.	'OFF' LAND PARCELS
# ac.	PARCELS W/ WATER RIGHTS



## APPLICATION FOR WATER RIGHTS TRANSFER

COID / PHILIP & PENELOPE KNIGHT

TAXLOT #: 700

0.3 ACRES

DATE: 09-14-10

FILE: I:\TRANSFER\WRTRANS\10T-20010-004\141316\_NESE

# DESCHUTES COUNTY SEC.30 T14S R13E

SCALE - 1" = 400'



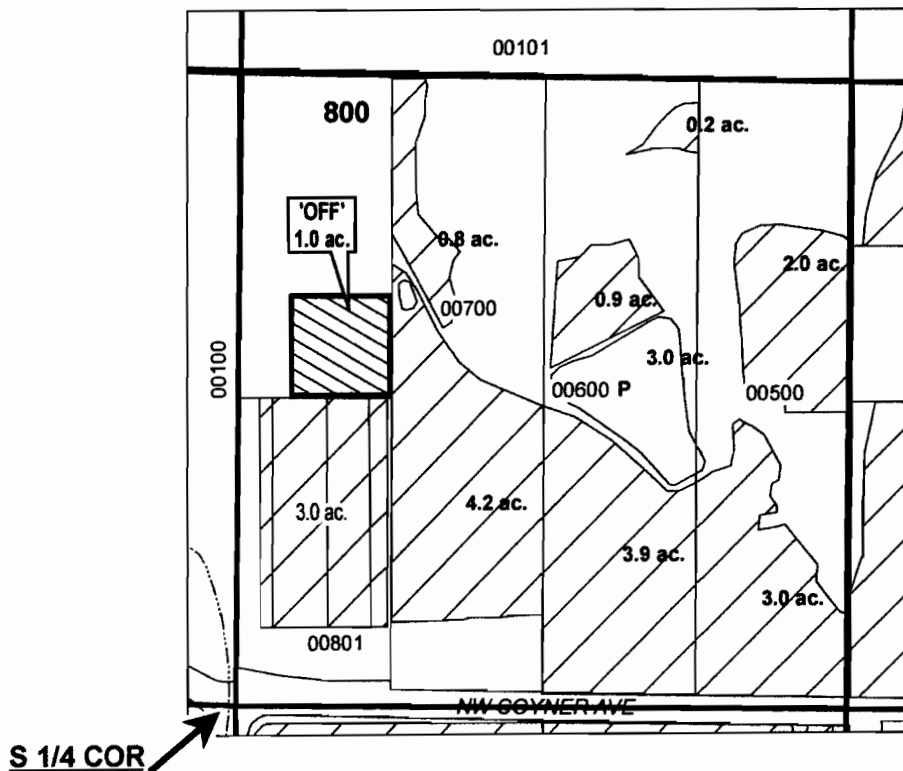
SW 1/4 OF THE SE 1/4

RECEIVED

DEC 21 2010

WATER RIGHTS DIVISION  
CLERK OF COURSE

DISTRICT INTERNAL  
NOTICE #: T-2010-026



	EXISTING WATER RIGHTS
	OFF LANDS

"OFF" MAP



## APPLICATION FOR WATER RIGHTS TRANSFER

COID / TIMOTHY W. & TANA C. FLEWELLING

TAXLOT #: 800

1.0 ACRES

DATE: 11-23-10

FILE: E:\TRANSFER\WRTRANS10\141330\_SWSE\_026

T 11172

# DESCHUTES COUNTY SEC.13 T15S R12E

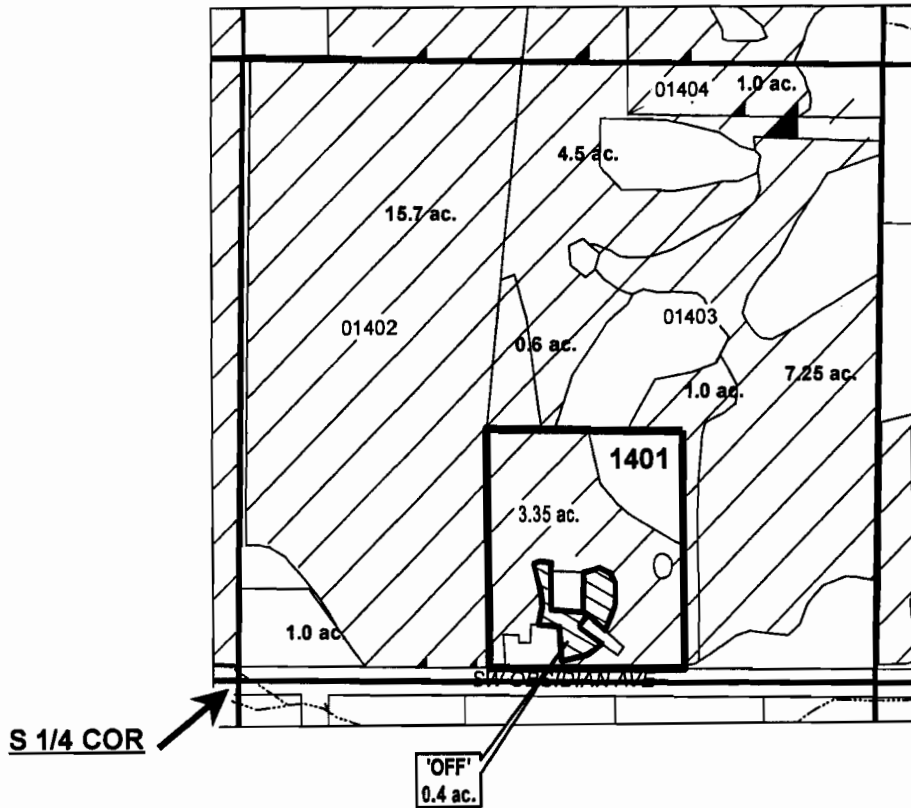
SCALE - 1" = 400'



SW 1/4 OF THE SE 1/4

RECEIVED  
DEC 21 2010  
WASCO IRRIGATION DISTRICT  
3000 11TH ST  
WASCO, OR 97140

DISTRICT INTERNAL  
NOTICE #: T-2010-004



"OFF" MAP



## APPLICATION FOR WATER RIGHTS TRANSFER

COID / PHILIP & PENELOPE KNIGHT

TAXLOT #: 1401

0.4 ACRES

DATE: 09-16-10

FILE: I:\TRANSFER\WRTRANS10\T-2010-0004\151213\_SWSE

T 11172

# DESCHUTES COUNTY SEC.25 T15S R12E

SCALE - 1" = 400'



NE 1/4 OF THE NW 1/4

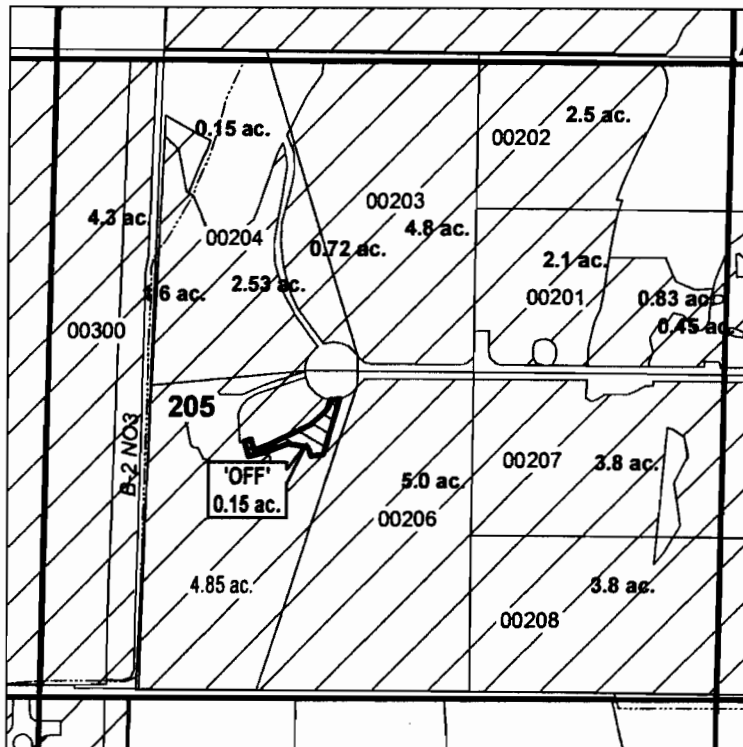
RECEIVED

DEC 21 2010


LAND DISTRICT  
S. 25 T. 15 S. R. 12 E.

DISTRICT INTERNAL  
NOTICE #: T-2010-004

N 1/4 COR



"OFF" MAP

	EXISTING WATER RIGHTS
	OFF LANDS



## APPLICATION FOR WATER RIGHTS TRANSFER

COID / PHILIP & PENELOPE KNIGHT

TAXLOT #: 205

0.15 ACRES

DATE: 09-16-10

11172

FILE: I:\TRANSFER\WRTRANS10\T-2010-004\151225\_SWNW

# DESCHUTES COUNTY SEC.05 T15S R13E

SCALE - 1" = 400'



NW 1/4 OF THE NE 1/4

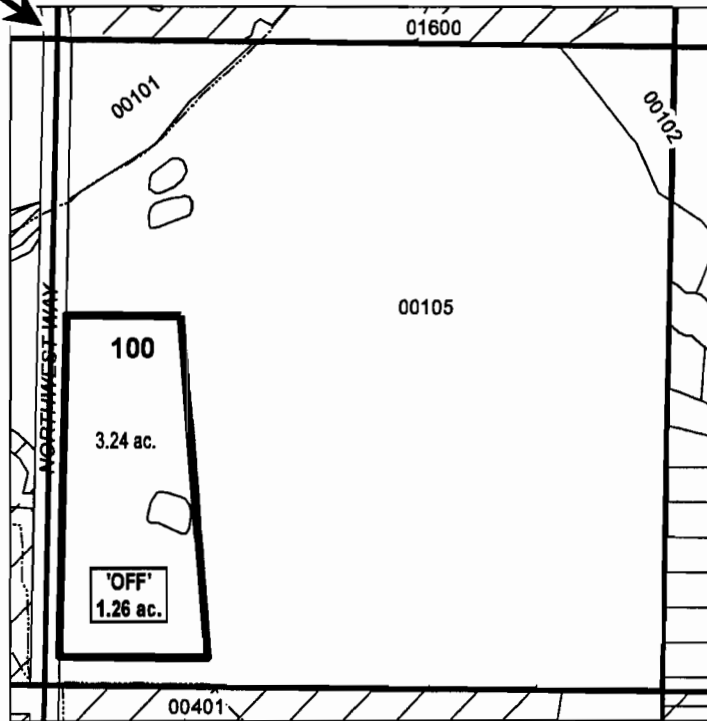
RECEIVED

DEC 21 2010

WATER RIGHTS DIVISION  
REGISTRATION

DISTRICT INTERNAL  
NOTICE #: T-2010-004

N 1/4 COR



# ac.

'OFF' LAND PARCELS

# ac.

PARCELS W/ WATER RIGHTS

"OFF" MAP

CENTRAL OREGON



IRRIGATION DISTRICT

## APPLICATION FOR WATER RIGHTS TRANSFER

COID / PHILIP & PENELOPE KNIGHT

TAXLOT #: 100

1.26 ACRES

DATE: 09-16-10

T 11172

FILE: I:\TRANSFER\WRTRANS10\T-2010-004\151305\_NWNE





# DESCHUTES COUNTY SEC.08 T15S R13E

SCALE - 1" = 400'



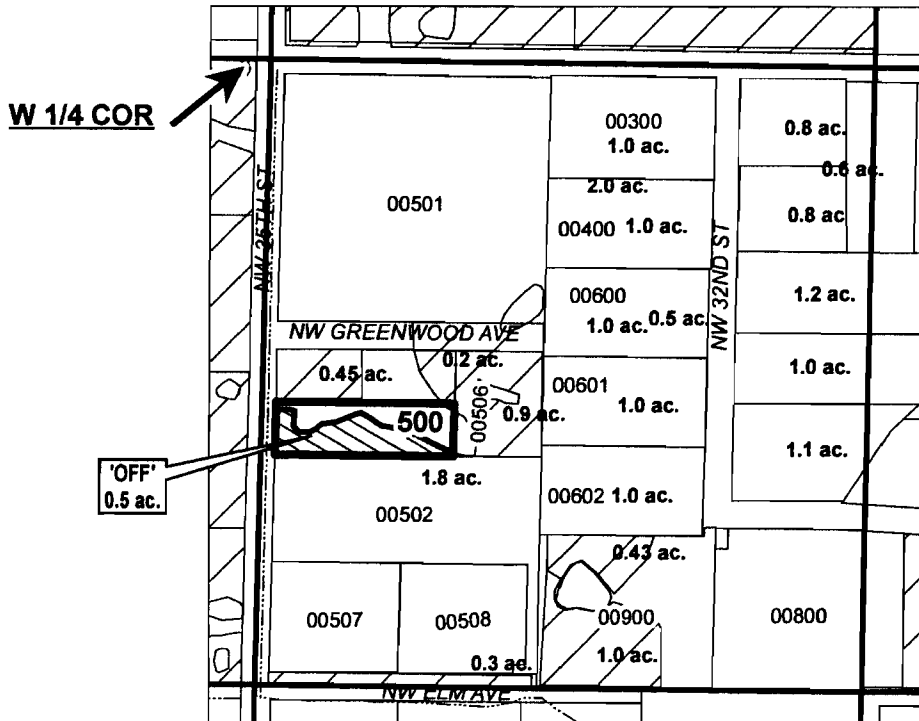
NW 1/4 OF THE SW 1/4

RECEIVED

DEC 21 2010

COUNTY CLERK'S DEPT  
SPECIAL SECTION

DISTRICT INTERNAL  
NOTICE #: T-2010-026



	EXISTING WATER RIGHTS
	OFF LANDS
	PARCELS W/ WATER RIGHTS

"OFF" MAP



## APPLICATION FOR WATER RIGHTS TRANSFER

COID / TIMOTHY W. & TANA C. FLEWELLING

TAXLOT #: 500

0.5 ACRES

DATE: 11-23-10

I 11172

FILE: I:\TRANSFER\WRTRANS10\151308\_NWSW\_026

# DESCHUTES COUNTY SEC.18 T15S R13E

SCALE - 1" = 400'



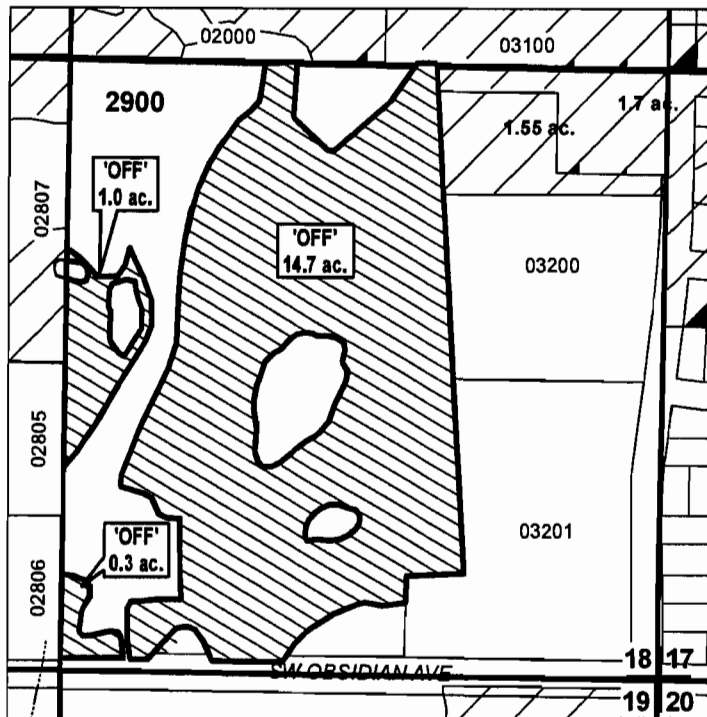
SE 1/4 OF THE SE 1/4

RECEIVED

DEC 21 2010

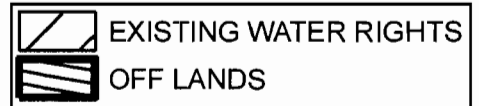
WATER RESOURCES DEPT  
SALIDA OFFICE

DISTRICT INTERNAL  
NOTICE #: T-2010-004



T 11172

"OFF" MAP



## APPLICATION FOR WATER RIGHTS TRANSFER

COID / PHILIP & PENELOPE KNIGHT

TAXLOT #: 2900

16.0 ACRES

DATE: 09-16-10

FILE: I:\TRANSFER\WR\TRANS10\T-2010-004\151318\_SESE

# DESCHUTES COUNTY SEC.20 T15S R13E

RECEIVED

DEC 21 2010

CLERK, DESCHUTES COUNTY  
COURT HOUSE

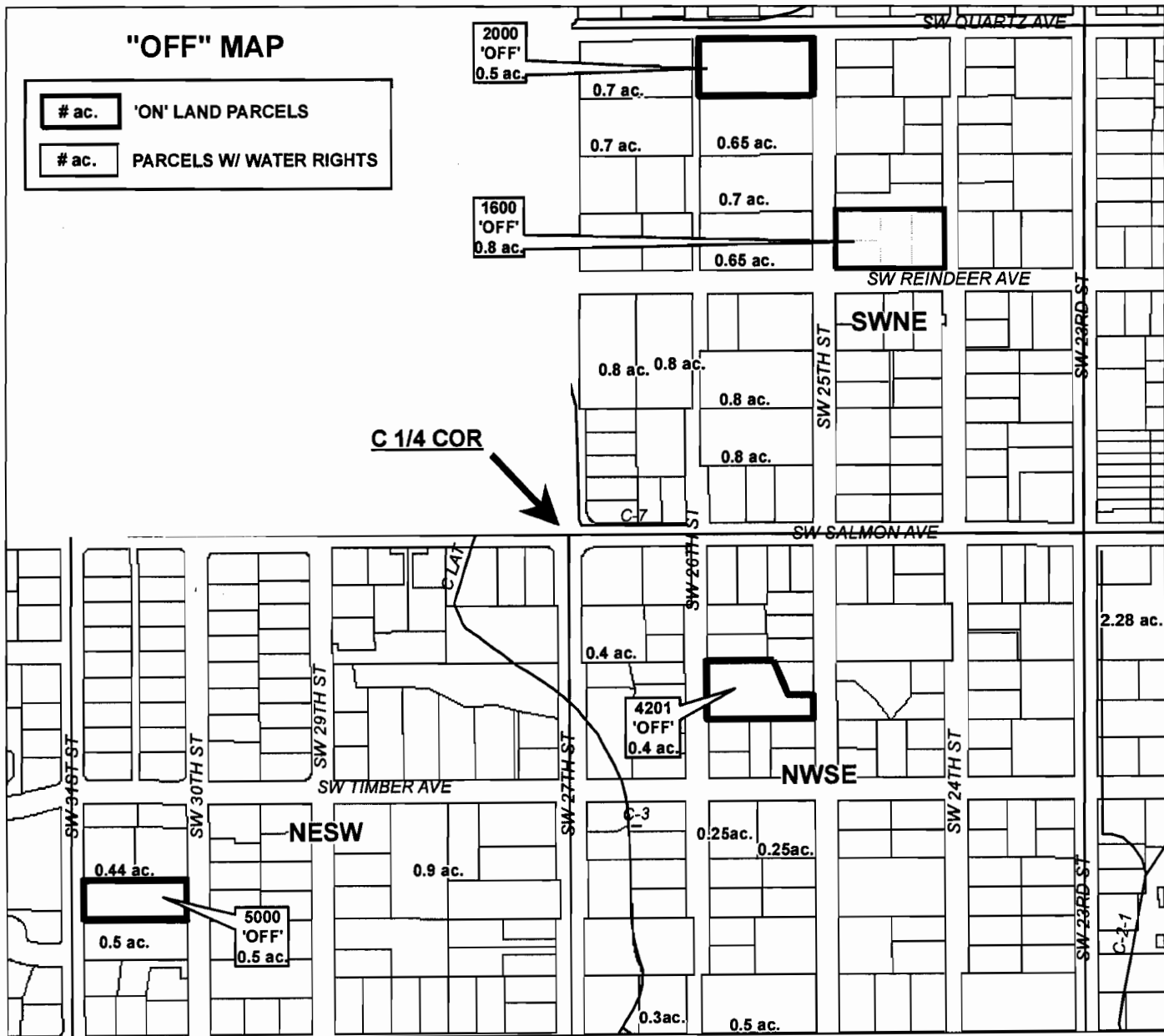
SCALE - 1" = 400'



SW 1/4 OF THE NE 1/4; NE 1/4 OF THE SW 1/4; NW 1/4 OF THE SE 1/4

## "OFF" MAP

# ac. 'ON' LAND PARCELS  
# ac. PARCELS W/ WATER RIGHTS



## APPLICATION FOR WATER RIGHTS TRANSFER

COID / PHILIP & PENELOPE KNIGHT

TAXLOT #: 1600, 2000, 4201, 5000

2.2 ACRES

DATE: 09-20-10

T 11172

FILE: E:\TRANSFER\WRTRANS10T-2010-0041151320

# DESCHUTES COUNTY SEC.30 T15S R13E

SCALE - 1" = 400'



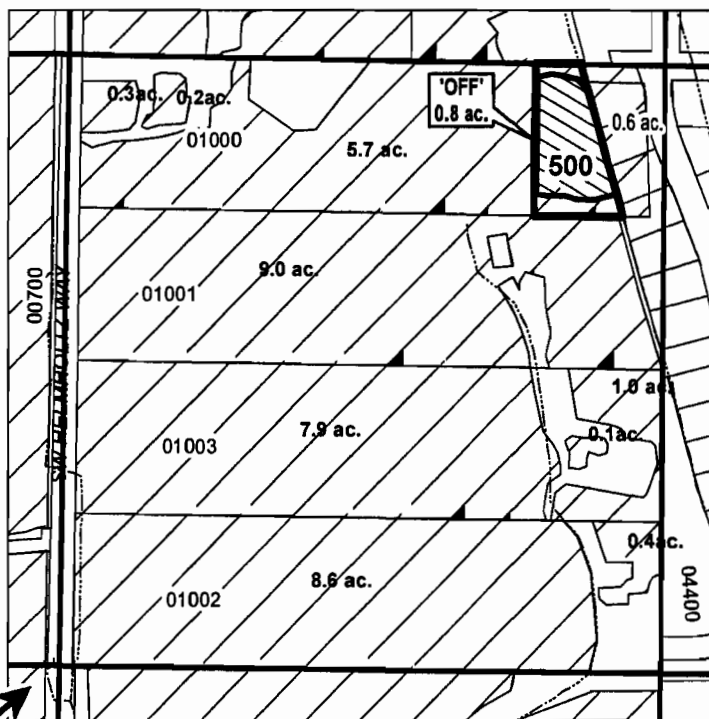
SW 1/4 OF THE NW 1/4

RECEIVED

DEC 21 2010

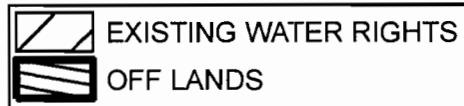
WATER RIGHTS DEPT  
SPECIAL SECTION

DISTRICT INTERNAL  
NOTICE #: T-2010-004



W 1/4 COR

"OFF" MAP



## APPLICATION FOR WATER RIGHTS TRANSFER

COID / PHILIP & PENELOPE KNIGHT

TAXLOT #: 500

0.8 ACRES

DATE: 09-20-10

I 11172

FILE: I:\TRANSFER\WRTRANS10\T-2010-004\151330\_SWNW

# DESCHUTES COUNTY SEC.21 T16S R14E

SCALE - 1" = 400'



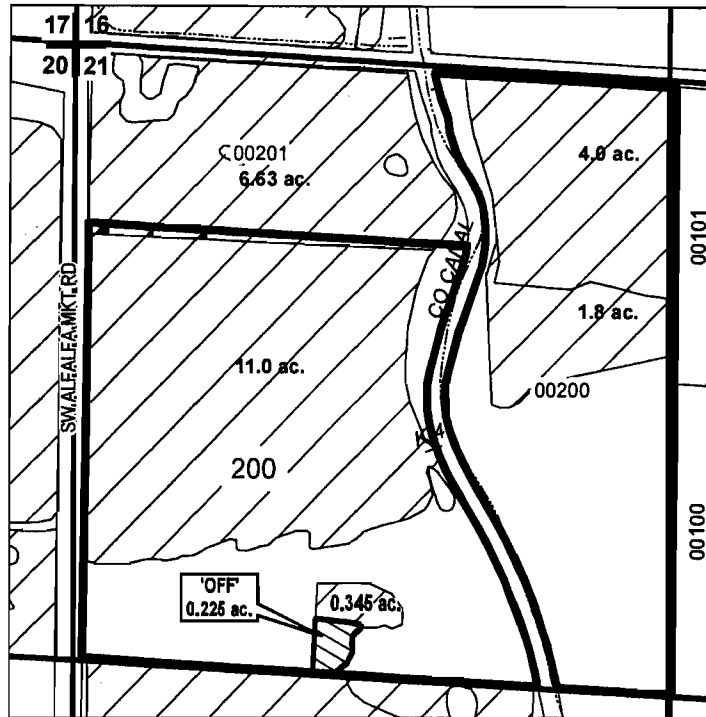
NW 1/4 OF THE NW 1/4

RECORDED



DEC 21 2010

WATER RIGHTS DIVISION  
SANTA FE COUNTY

DISTRICT INTERNAL  
NOTICE # T-2009-035



"OFF / ON" MAP

 EXISTING WATER RIGHTS  
 OFF LANDS

CENTRAL OREGON



IRRIGATION DISTRICT

APPLICATION FOR WATER RIGHTS TRANSFER

COID / RYAN T. & RACHELLE M. JUDSON

TAXLOT #: 200

0.225 ACRES

DATE: 10-12-09

T 11172

FILE: E:\TRANSFER\WRTRANS09\161421\_NWNW



# DESCHUTES COUNTY SEC.14 T17S R12E

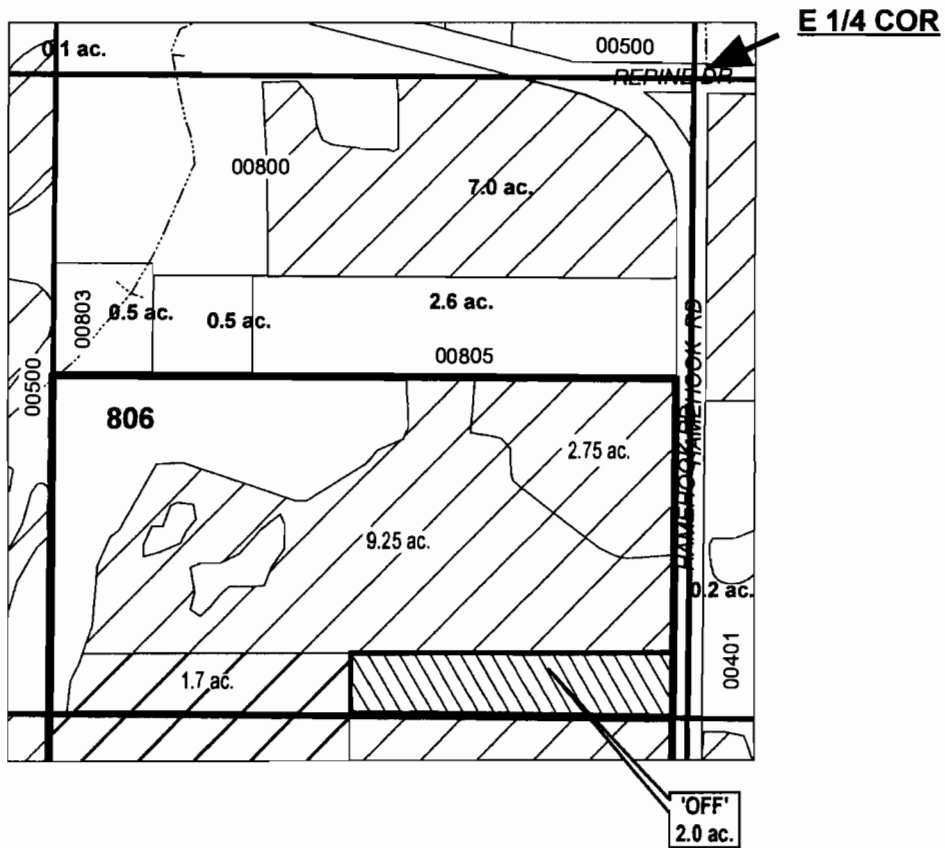
SCALE - 1" = 400'



NE 1/4 OF THE SE 1/4

DEC 21 2010

DISTRICT INTERNAL  
NOTICE #: T-2009-049



"OFF" MAP

	EXISTING WATER RIGHTS
	OFF LANDS
	PARCELS W/ WATER RIGHTS



## APPLICATION FOR WATER RIGHTS TRANSFER

COID / ALAN L. SCHWAB

TAXLOT #: 806 11172

2.0 ACRES

DATE: 12-09-09

FILE: E:\TRANSFER\WR\TRANS09\T-2009-049\171214\_NESE



# DESCHUTES COUNTY SEC.28 T17S R12E

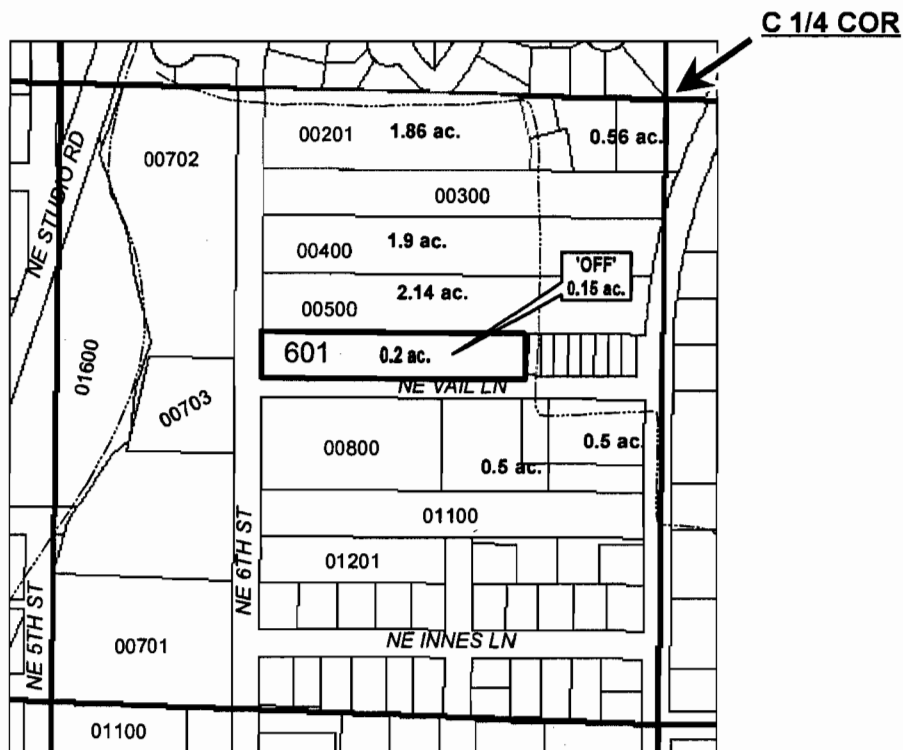
SCALE - 1" = 400'



NE 1/4 OF THE SW 1/4

RECORDED  
DEC 21 2010

DISTRICT INTERNAL  
NOTICE #: T-2009-035



C 1/4 COR

"OFF" MAP

# ac.	'OFF' LAND PARCELS
# ac.	PARCELS W/ WATER RIGHTS



## APPLICATION FOR WATER RIGHTS TRANSFER

COID / RYAN T. & RACHELLE M. JUDSON

TAXLOT #: 601

0.15 ACRES

DATE: 10-12-09

FILE: E:\TRANSFER\WR\TRANS091171228\_NESW2

T 11172

# DESCHUTES COUNTY SEC.18 T17S R13E

SCALE - 1" = 400'

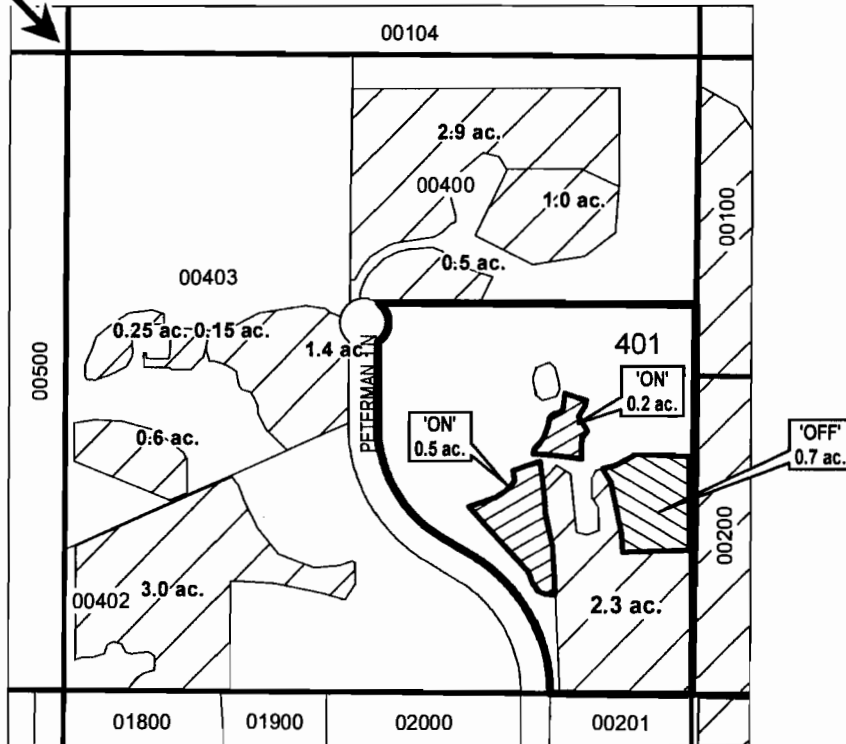


NW 1/4 OF THE SE 1/4

RECORDED  
DEC 21 2010  
WATER RIGHTS DIVISION  
CLATSOP COUNTY

DISTRICT INTERNAL  
NOTICE #: T-2010-021

C 1/4 COR



	EXISTING WATER RIGHTS
	OFF LANDS
	ON LANDS

"OFF / ON" MAP

T 11172



APPLICATION FOR WATER RIGHTS TRANSFER  
WILLIAM H. & CHERYL A. LANE/ WILLIAM H. & CHERYL A. LANE

TAXLOT #: 401

0.7 ACRES

DATE: 12-03-10

FILE: E:\TRANSFER\WRTRANS10\171318\_NWSE\_021

# DESCHUTES COUNTY SEC.20 T17S R13E

SCALE - 1" = 400'



NE 1/4 OF THE SW 1/4

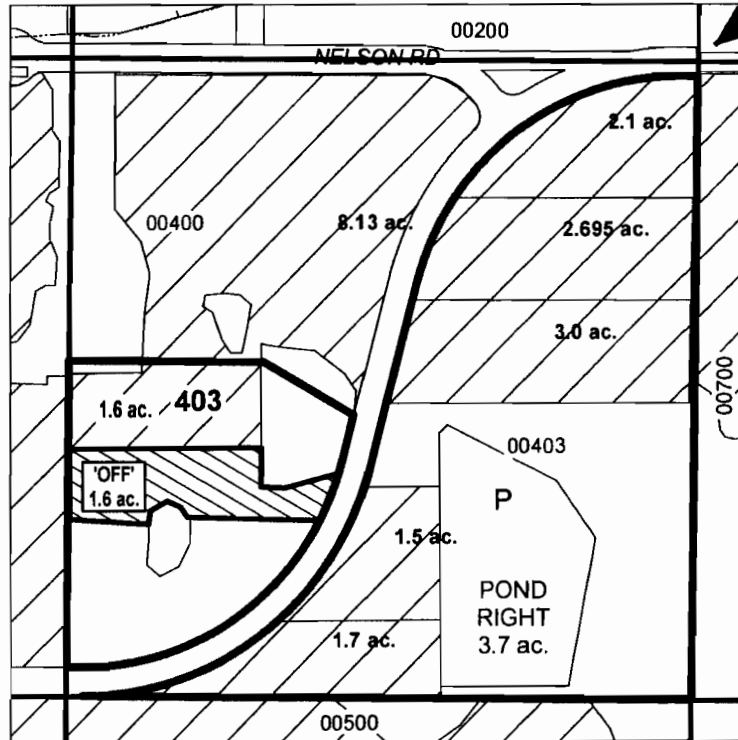
RECEIVED

DEC 21 2010

PLANNING & ZONING  
DEPARTMENT

DISTRICT INTERNAL  
NOTICE #: T-2009-049

C 1/4 COR



T 11172

"OFF" MAP

	EXISTING WATER RIGHTS
	OFF LANDS
	POND



## APPLICATION FOR WATER RIGHTS TRANSFER

COID / ALAN L. SCHWAB

TAXLOT #: 403

1.6 ACRES

DATE: 12-03-10

FILE: E:\TRANSFER\WRTRANS09\T-2009-049\171320\_NESW\_049

# DESCHUTES COUNTY SEC.02 T17S R14E

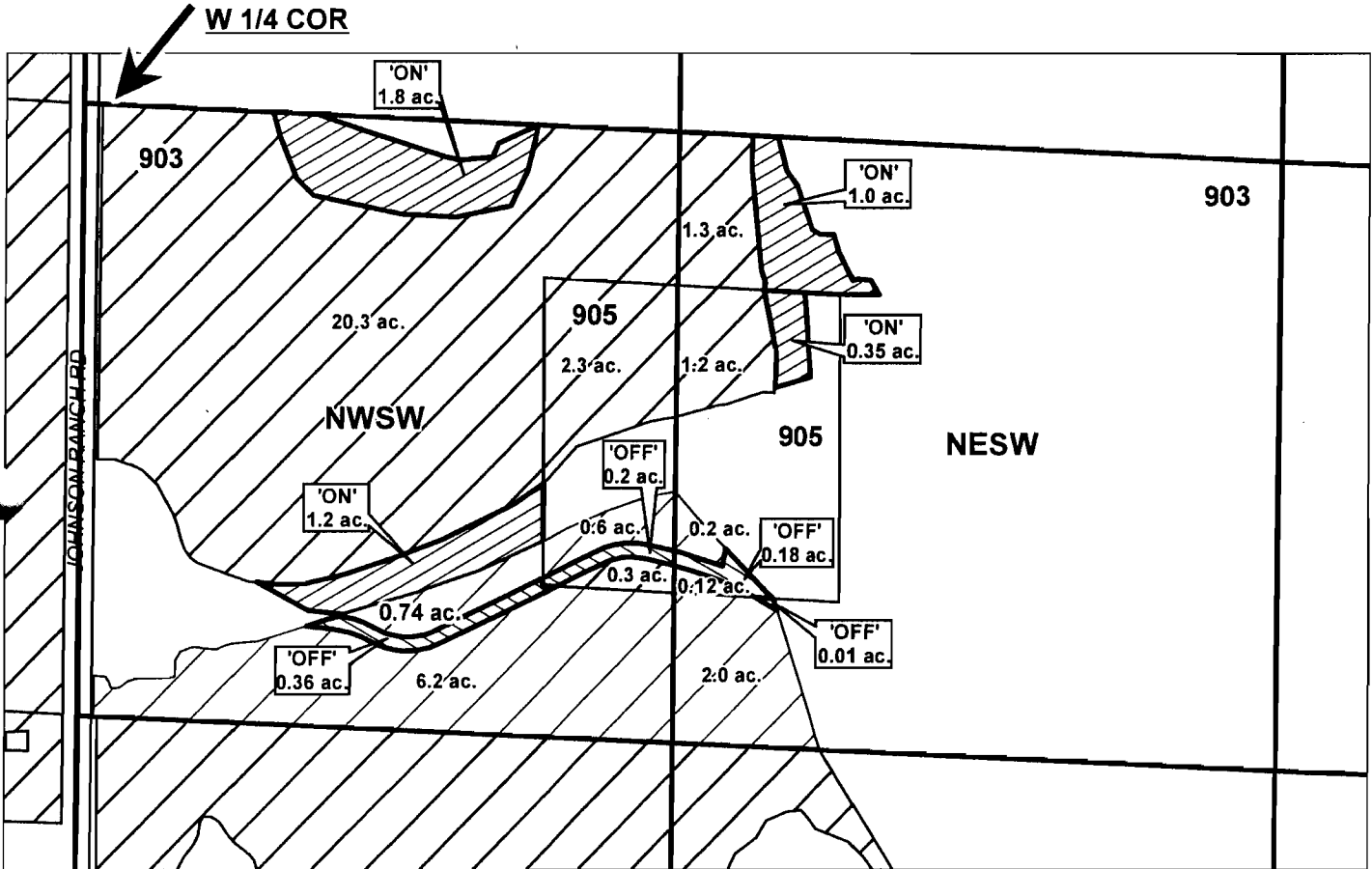
SCALE - 1" = 400'

DEC 21 2010



NW 1/4 OF THE SW 1/4; NE 1/4 OF THE SW 1/4

DISTRICT INTERNAL  
NOTICE #: T-2009-049



	EXISTING WATER RIGHTS
	OFF LANDS
	ON LANDS

"OFF / ON" MAP

T 11172



## APPLICATION FOR WATER RIGHTS TRANSFER

ALAN L. SCHWAB / ALAN L. SCHWAB (0.75)  
COID / ALAN L. SCHWAB (3.6)

TAXLOT #: 903, 905

4.35 ACRES

DATE: 12-03-10

FILE: E:\TRANSFER\WRTRANS09\T-2009-049\171402\_NSW\_REV

# DESCHUTES COUNTY SEC.03 T18S R12E

SCALE - 1" = 400'



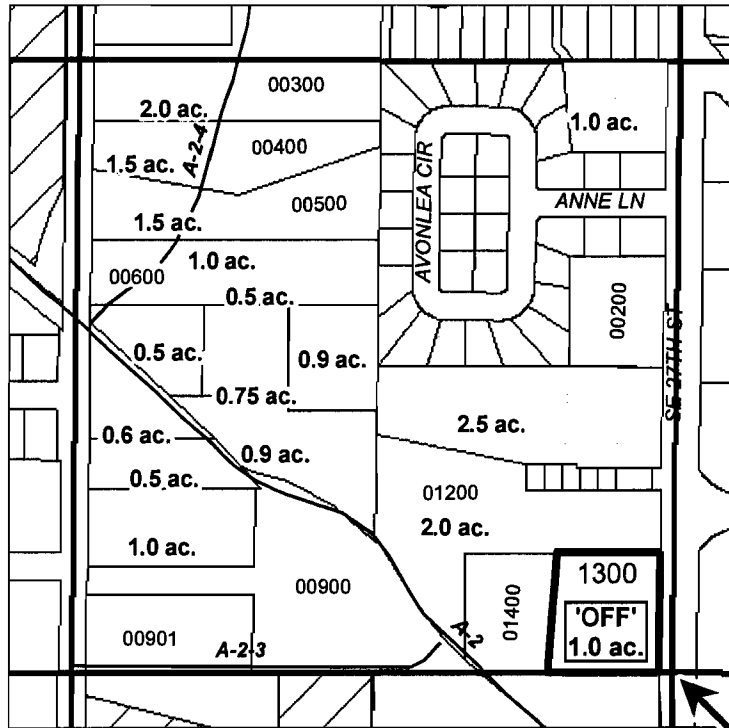
SE 1/4 OF THE NE 1/4

RECEIVED

DEC 21 2010

PLANNING & DEVELOPMENT  
SALMON CITY, OR

DISTRICT INTERNAL  
NOTICE #: T-2009-035



E 1/4 COR

"OFF" MAP

T 11172

# ac.	'OFF' LAND PARCELS
# ac.	PARCELS W/ WATER RIGHTS



## APPLICATION FOR WATER RIGHTS TRANSFER

COID / RYAN T. & RACHELLE M. JUDSON

TAXLOT #: 1300

1.0 ACRES

DATE: 10-12-09

FILE: E:\TRANSFER\WRTRANS09\181203\_SENE

# DESCHUTES COUNTY SEC.03 T18S R12E

SCALE - 1" = 400'

RECEIVED

DEC 21 2010

WATER RIGHTS DIVISION  
SALES SECTION

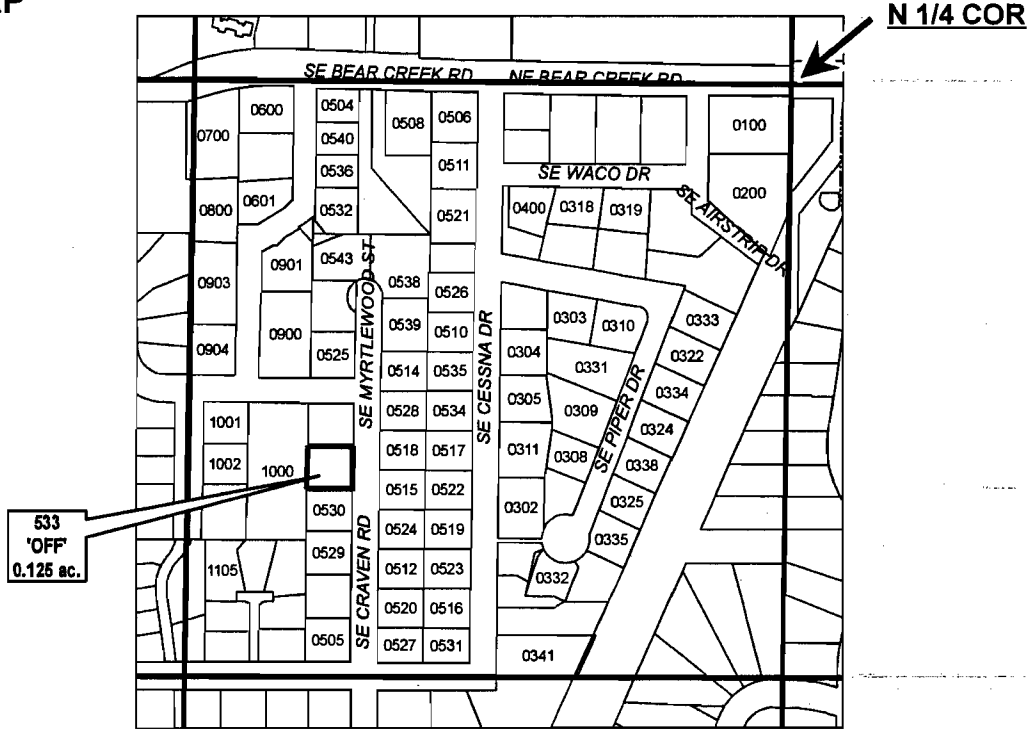
DISTRICT INTERNAL  
NOTICE #: T-2009-035



NE 1/4 OF THE NW 1/4

# ac.	'OFF' LAND PARCELS
TL #	PARCELS W/ WATER RIGHTS

## "OFF" MAP



TL	ACRES	TL	ACRES	TL	ACRES	TL	ACRES	TL	ACRES
100	0.125 ac.	324	0.125 ac.	510	0.125 ac.	525	0.125 ac.	543	0.125 ac.
200	0.250 ac.	325	0.125 ac.	511	0.125 ac.	526	0.125 ac.	600	0.125 ac.
302	0.125 ac.	331	0.125 ac.	512	0.110 ac.	527	0.100 ac.	601	0.250 ac.
303	0.125 ac.	332	0.125 ac.	514	0.125 ac.	528	0.125 ac.	700	0.125 ac.
304	0.125 ac.	333	0.125 ac.	515	0.125 ac.	529	0.125 ac.	800	0.125 ac.
305	0.125 ac.	334	0.125 ac.	516	0.125 ac.	530	0.125 ac.	900	0.125 ac.
307	0.125 ac.	335	0.125 ac.	517	0.125 ac.	531	0.125 ac.	901	0.125 ac.
308	0.125 ac.	338	0.125 ac.	518	0.125 ac.	532	0.100 ac.	903	0.125 ac.
309	0.125 ac.	341	0.125 ac.	519	0.125 ac.	534	0.125 ac.	904	0.125 ac.
310	0.125 ac.	400	0.125 ac.	520	0.109 ac.	535	0.125 ac.	1000	0.250 ac.
311	0.125 ac.	504	0.100 ac.	521	0.125 ac.	536	0.100 ac.	1001	0.125 ac.
318	0.125 ac.	505	0.125 ac.	522	0.125 ac.	538	0.250 ac.	1002	0.125 ac.
319	0.125 ac.	506	0.125 ac.	523	0.125 ac.	539	0.125 ac.	1101	0.250 ac.
322	0.125 ac.	508	0.200 ac.	524	0.125 ac.	540	0.100 ac.		



## APPLICATION FOR WATER RIGHTS TRANSFER

COID / RYAN T. & RACHELLE M. JUDSON

TAXLOT #: 5.33 11172 0.125 ACRES

DATE: 10-09-09

FILE: E:\TRANSFER\WRTRANS09\181203\_NENW

# DESCHUTES COUNTY SEC.05 T18S R13E

SCALE - 1" = 400'



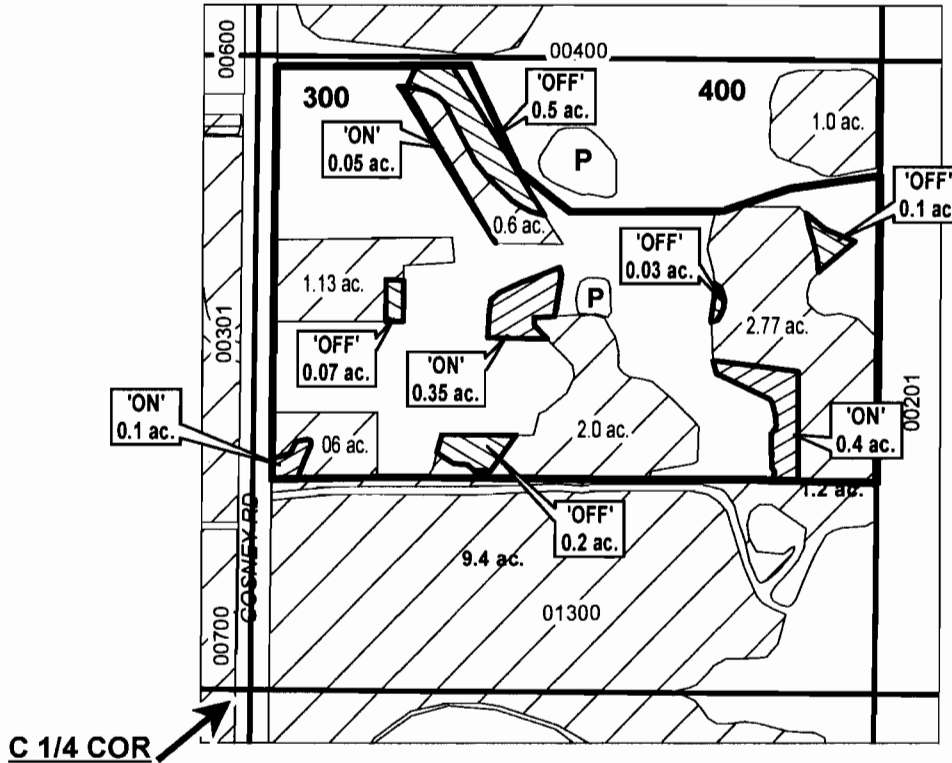
SW 1/4 OF THE NE 1/4

RECEIVED

DEC 21 2010

WATER RESOURCES DEPT  
Salem, Oregon

DISTRICT INTERNAL  
NOTICE #: T-2010-009



"OFF / ON" MAP

	EXISTING WATER RIGHTS
	OFF LANDS
	ON LANDS



APPLICATION FOR WATER RIGHTS TRANSFER  
WHITNEY E. BURGESS TRUST / WHITNEY E. BURGESS TRUST

TAXLOT #: 300

T 11172

0.9 ACRES

DATE: 12-02-10

FILE: E:\TRANSFER\WRTRANS10\181305\_SWNE\_REV

# DESCHUTES COUNTY SEC.04 T14S R13E

SCALE - 1" = 400'



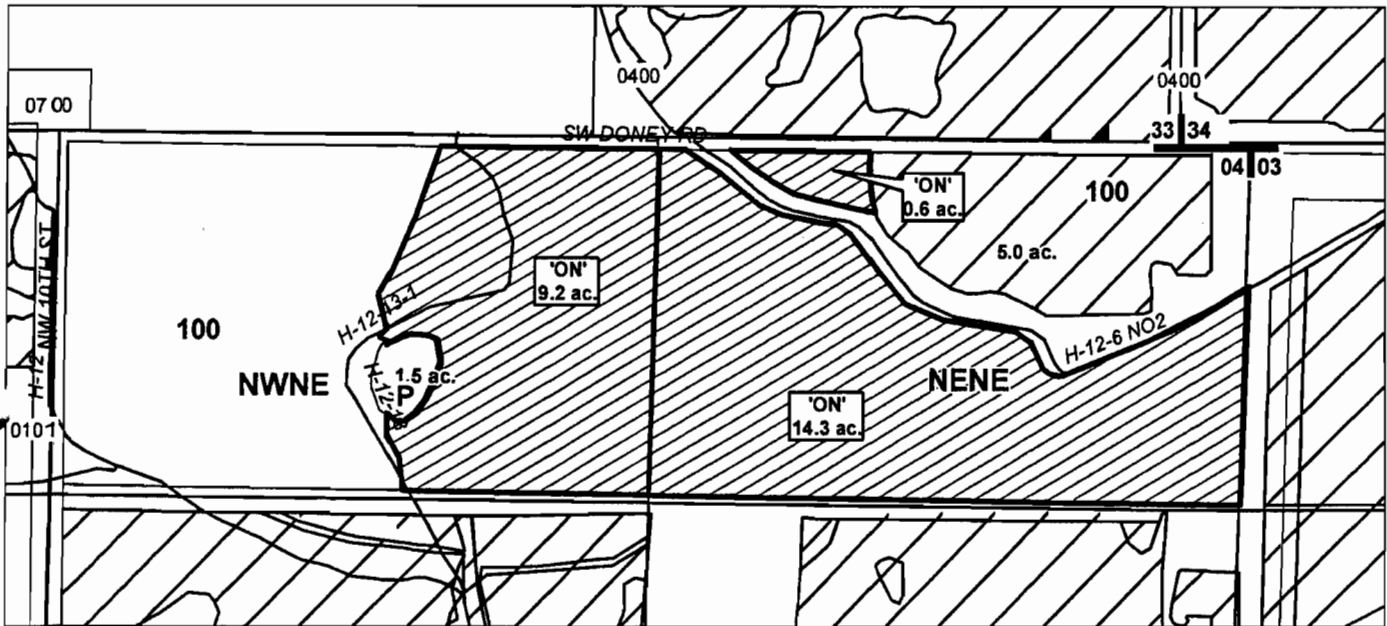
RECEIVED

DEC 21 2010

WATER RIGHTS DEPT  
S.W. OREGON

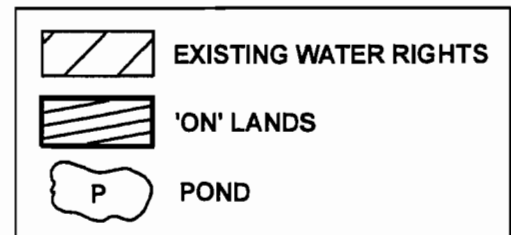
NE 1/4 OF THE NE 1/4; NW 1/4 OF THE NE 1/4

DISTRICT INTERNAL  
NOTICE #: T-2010-004



T 11172

"ON" MAP



## APPLICATION FOR WATER RIGHTS TRANSFER

COID / PHILIP & PENELOPE KNIGHT

TAXLOT #: 100

24.1 ACRES

DATE: 09-21-10

FILE: E:\TRANSFER\WRTRANS10\T-2010-004\141304\_NNE



# DESCHUTES COUNTY SEC.30 T14S R13E

SCALE - 1" = 400'



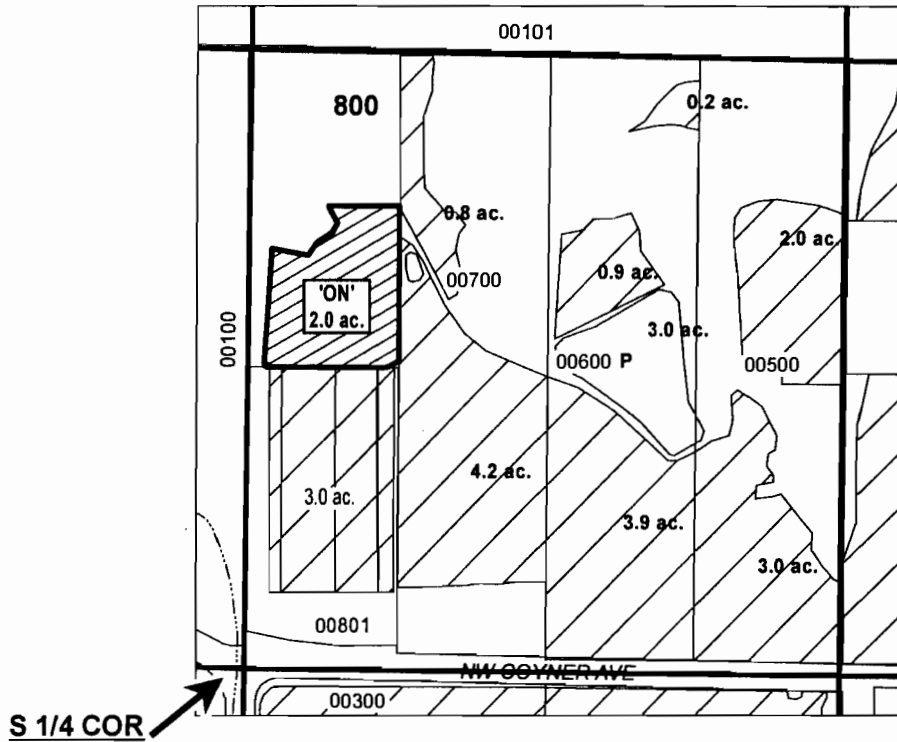
SW 1/4 OF THE SE 1/4

RECEIVED

DEC 21 2010

WATER RIGHTS DIVISION  
S.W. 1/4 COR

DISTRICT INTERNAL  
NOTICE #: T-2010-026



S 1/4 COR

	EXISTING WATER RIGHTS
	ON LANDS

"ON" MAP

T 11172

CENTRAL OREGON



IRRIGATION DISTRICT

## APPLICATION FOR WATER RIGHTS TRANSFER

COID / TIMOTHY W. & TANA C. FLEWELLING

TAXLOT #: 800

2.0 ACRES

DATE: 12-02-10

FILE: E:\TRANSFER\WRTRANS101141330\_SWSE\_ON\_026

# DESCHUTES COUNTY SEC.21 T16S R14E

SCALE - 1" = 400'



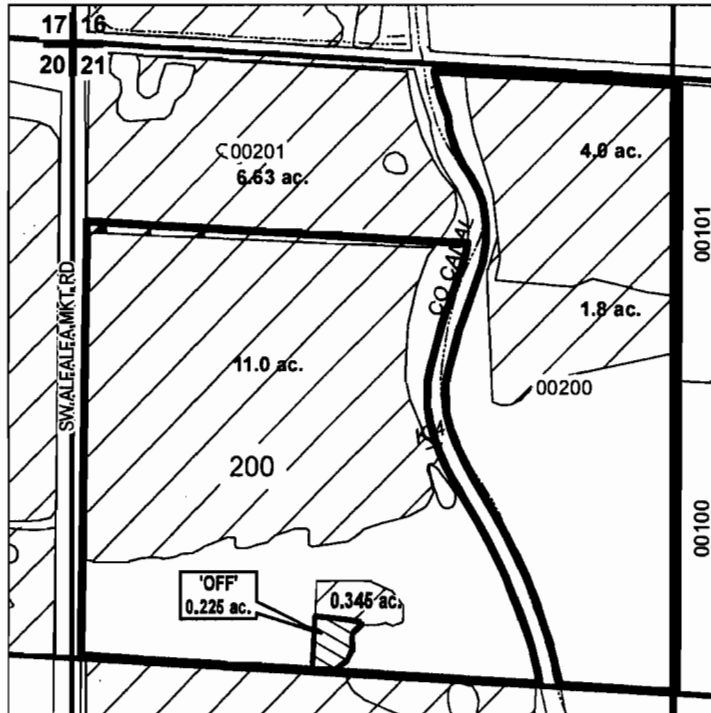
NW 1/4 OF THE NW 1/4

RECEIVED

DEC 21 2010

PLANNING & DEVELOPMENT  
COUNTY CLERK

DISTRICT INTERNAL  
NOTICE #: T-2009-035



T 11172

"OFF / ON" MAP



## APPLICATION FOR WATER RIGHTS TRANSFER

COID / RYAN T. & RACHELLE M. JUDSON

TAXLOT #: 200

0.225 ACRES

DATE: 10-12-09

FILE: E:\TRANSFER\WR\TRANS09\161421\_NWNW



# DESCHUTES COUNTY SEC.14 T17S R12E

SCALE - 1" = 400'

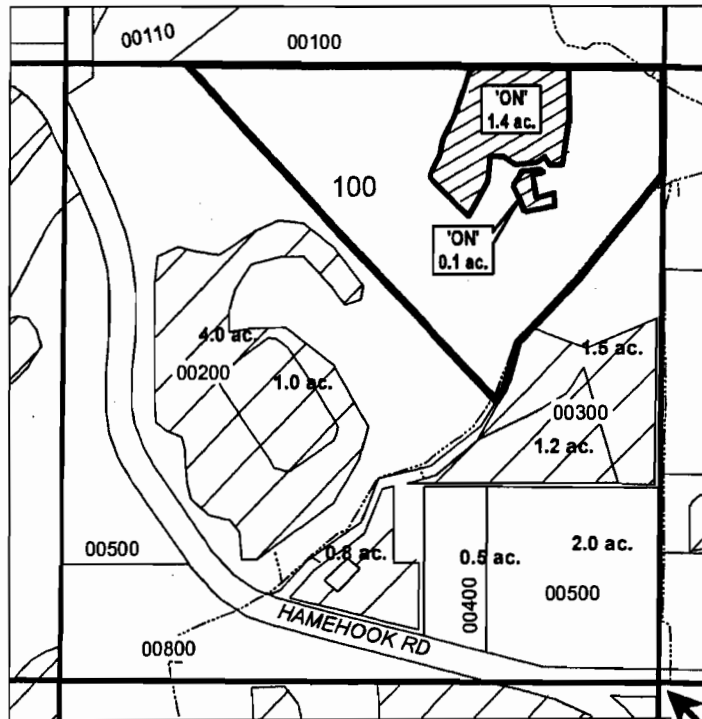


SE 1/4 OF THE NE 1/4

DEC 21 2010

WATER RIGHTS DIVISION  
2010

DISTRICT INTERNAL  
NOTICE #: T-2009-035



E 1/4 COR

T 11172

"ON" MAP

	EXISTING WATER RIGHTS
	ON LANDS
	PARCELS W/ WATER RIGHTS



## APPLICATION FOR WATER RIGHTS TRANSFER

COID / RYAN T. & RACHELLE M. JUDSON

TAXLOT #:100

1.5 ACRES

DATE: 10-12-09

FILE: E:\TRANSFER\WRTRANS09\171214\_SENE

# DESCHUTES COUNTY SEC.18 T17S R13E

SCALE - 1" = 400'



NW 1/4 OF THE SE 1/4

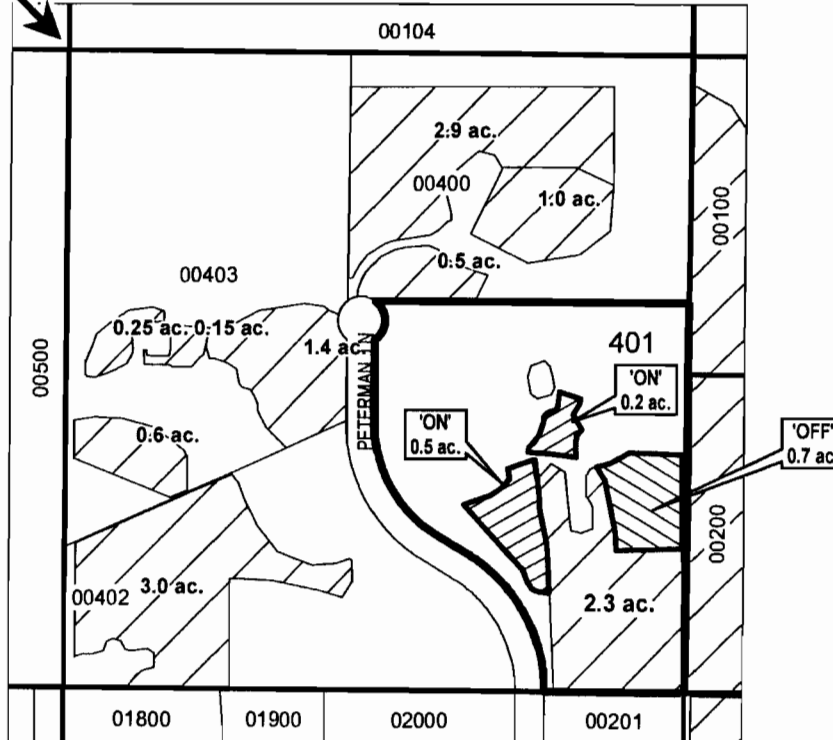
RECEIVED

DEC 21 2010

WATER RIGHTS DIVISION  
S.W. 2010

DISTRICT INTERNAL  
NOTICE #: T-2010-021

C 1/4 COR



T 11172

"OFF / ON" MAP

	EXISTING WATER RIGHTS
	OFF LANDS
	ON LANDS



**APPLICATION FOR WATER RIGHTS TRANSFER**  
**WILLIAM H. & CHERYL A. LANE/ WILLIAM H. & CHERYL A. LANE**

TAXLOT #: 401

0.7 ACRES

DATE: 12-03-10

FILE: E:\TRANSFER\WRTRANS10\171318\_NWSE\_021

# DESCHUTES COUNTY SEC.02 T17S R14E

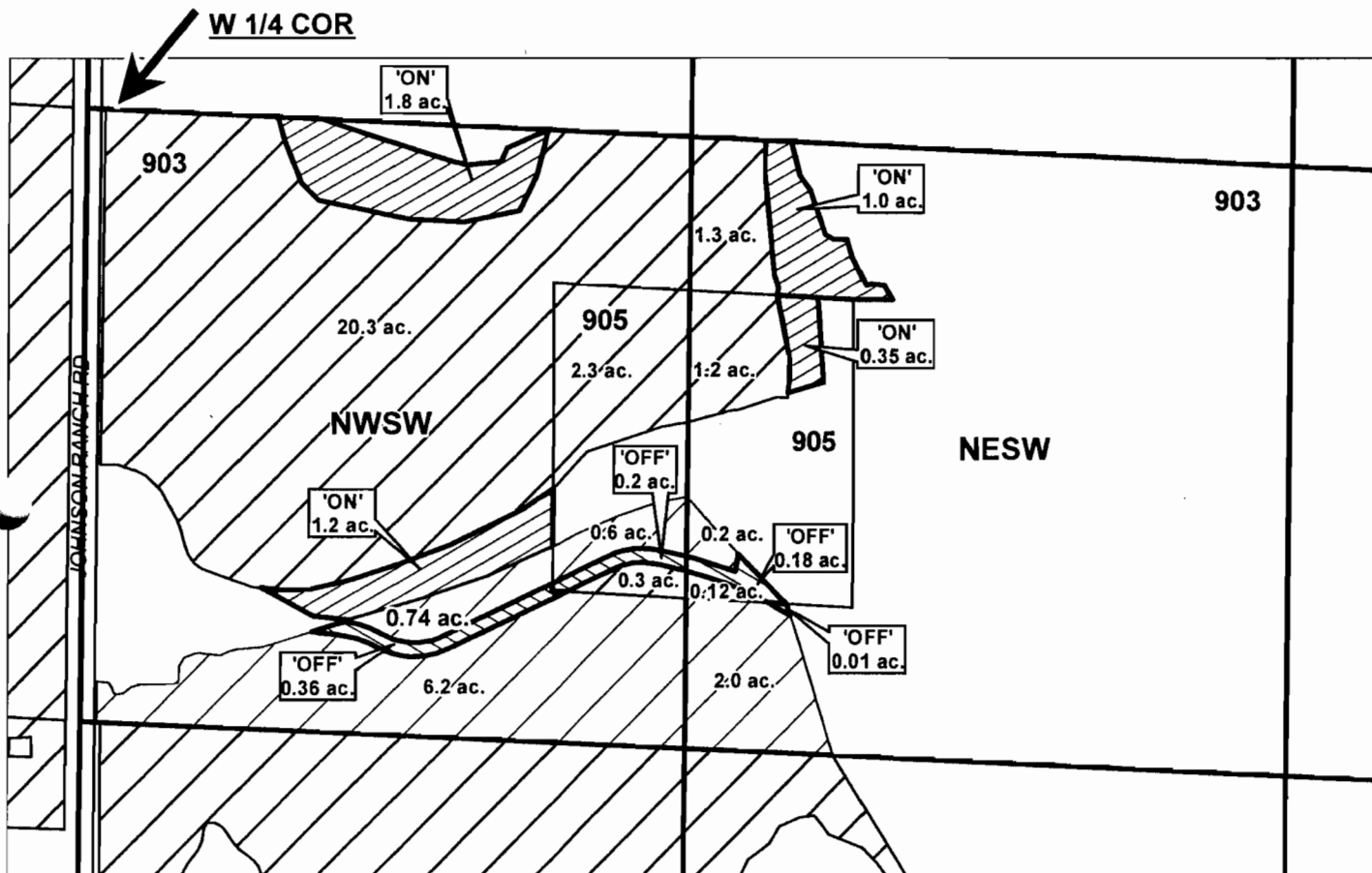
SCALE - 1" = 400'



NW 1/4 OF THE SW 1/4; NE 1/4 OF THE SW 1/4

RECEIVED  
DEC 21 2010  
DESCHUTES COUNTY  
COURT CLERK'S OFFICE

DISTRICT INTERNAL  
NOTICE #: T-2009-049



"OFF / ON" MAP

	EXISTING WATER RIGHTS
	OFF LANDS
	ON LANDS

T 11172



## APPLICATION FOR WATER RIGHTS TRANSFER

ALAN L. SCHWAB / ALAN L. SCHWAB (0.75)  
COID / ALAN L. SCHWAB (3.6)

TAXLOT #: 903, 905

4.35 ACRES

DATE: 12-03-10

FILE: E:\TRANSFER\WRTRANS09\T-2009-049\171402\_NSW\_REV

# DESCHUTES COUNTY SEC.05 T18S R13E

SCALE - 1" = 400'



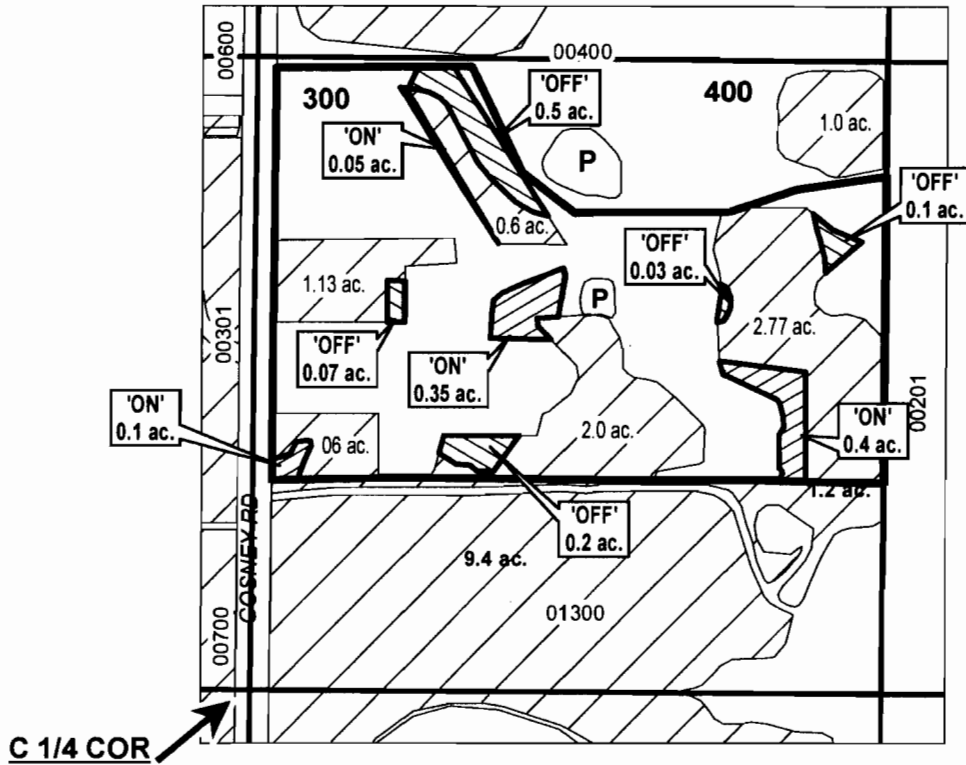
SW 1/4 OF THE NE 1/4

RECEIVED

DEC 21 2010

WATER RESOURCES DEPT  
Salem, Oregon

DISTRICT INTERNAL  
NOTICE #: T-2010-009



T 11172

"OFF / ON" MAP

	EXISTING WATER RIGHTS
	OFF LANDS
	ON LANDS



APPLICATION FOR WATER RIGHTS TRANSFER  
WHITNEY E. BURGESS TRUST / WHITNEY E. BURGESS TRUST

TAXLOT #: 300

0.9 ACRES

DATE: 12-02-10

FILE: E:\TRANSFER\WRTRANS10\181305\_SWNE\_REV