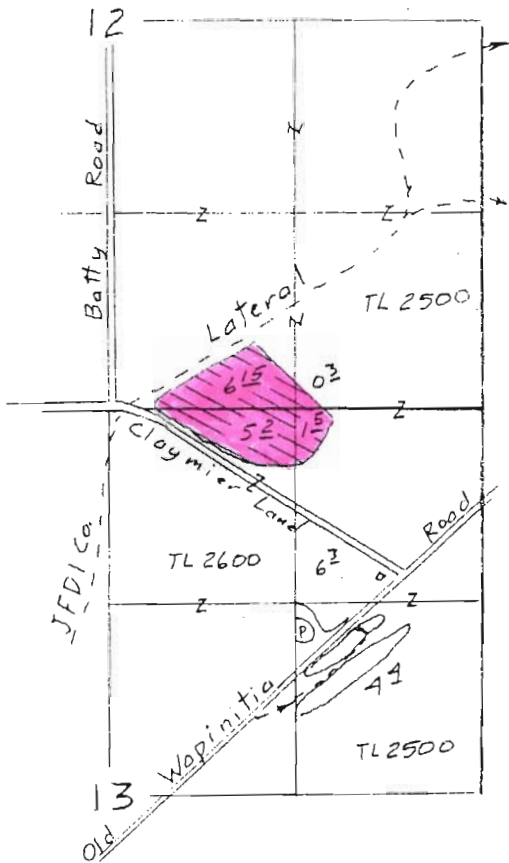
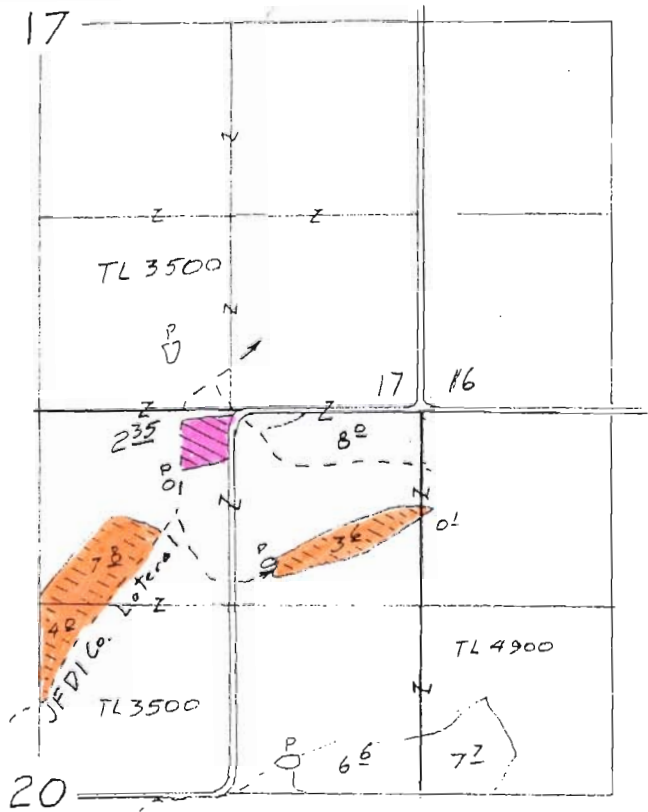


WORK COPY



T.5S., R.12E., W.M.  
Ross

● To 13<sup>15</sup> acres



T.5S., R.13E., W.M.  
Ambrose

● From 15<sup>2</sup> acres

● To 2<sup>35</sup> acres

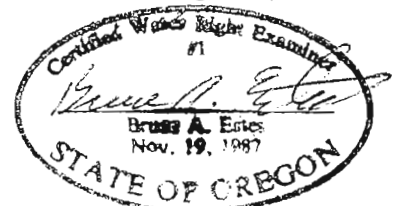
Transfer Application Map  
for  
Barbara Ambrose

(Juniper Flat District Improvement Co.)  
to  
Donna Ross

RECEIVED

JUL 31 2009

WATER RESOURCES DEPT  
SALEM, OREGON



Renewal Dec 31, 2009

Sheet 1 of 2

ESTES SURVEYS, LLC

PO Box 17519  
Salem, OR 97305-7519  
(503) 585-7509

6032 Arnold Rd  
Bend, OR 97702  
(541) 382-7391

This map is for the purpose of  
locating a water right only  
and has no intent to provide  
legal dimensions or the location  
of property lines.

T 10236