

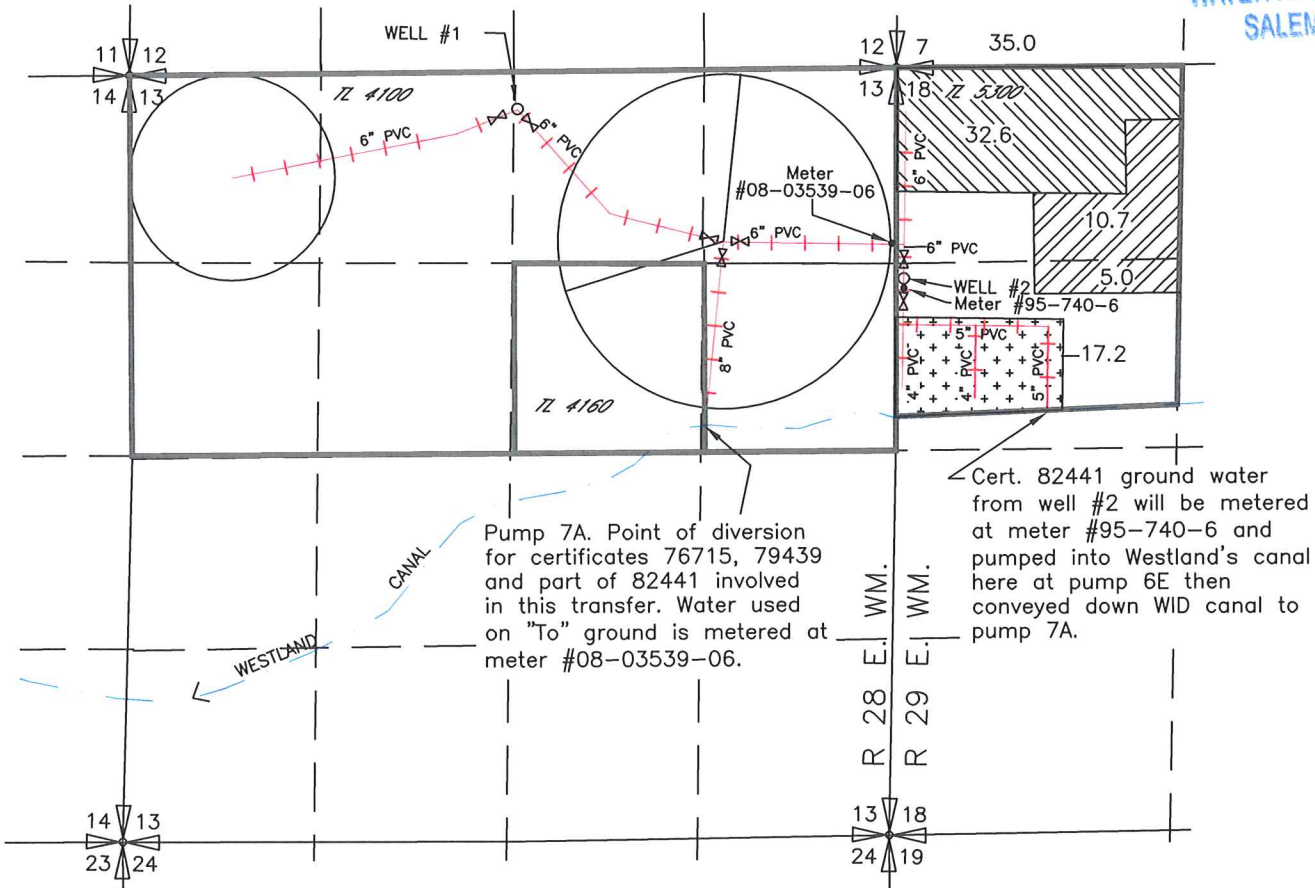
2011 WESTLAND IRRIGATION DISTRICT
 TEMPORARY TRANSFER
 DOUBLE M RANCH, INC – DOUBLE M RANCH INC
 CERTIFICATES 76715, 79439 & 82441
 T3N, R 28 & 29 E, W.M.

RECEIVED

APR 07 2011

WATER RESOURCES DEPT
 SALEM, OREGON

FROM



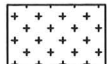


Pump 7A. Point of diversion for certificates 76715, 79439 and part of 82441 involved in this transfer. Water used on "To" ground is metered at meter #08-03539-06.

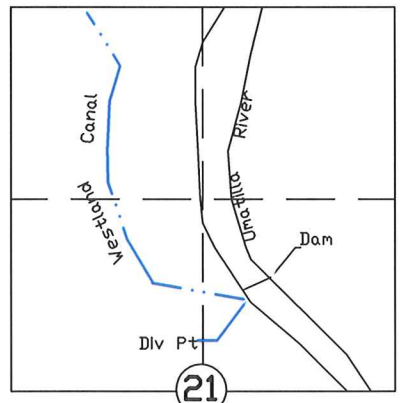
Cert. 82441 ground water from well #2 will be metered at meter #95-740-6 and pumped into Westland's canal here at pump 6E then conveyed down WID canal to pump 7A.

WELL #1 Located 270' South & 2540' West from the NE corner section 13, T3N, R28E, WM
 WELL #2 Located 1450' South & 3160' West from the N 1/4 corner section 18, T3N, R29E, WM

T3N., R 29E., W.M.

-  Primary Cert. 76715 & Supplemental Cert. 79439
-  Certificate 82441
-  Certificate 82441 not involved in this transfer

 Control Valve



This transfer is identical to district temporary transfers, 2008 T-10611, 2009 T-10834 and 2010 T-11043

T 11222



SCALE IN FEET

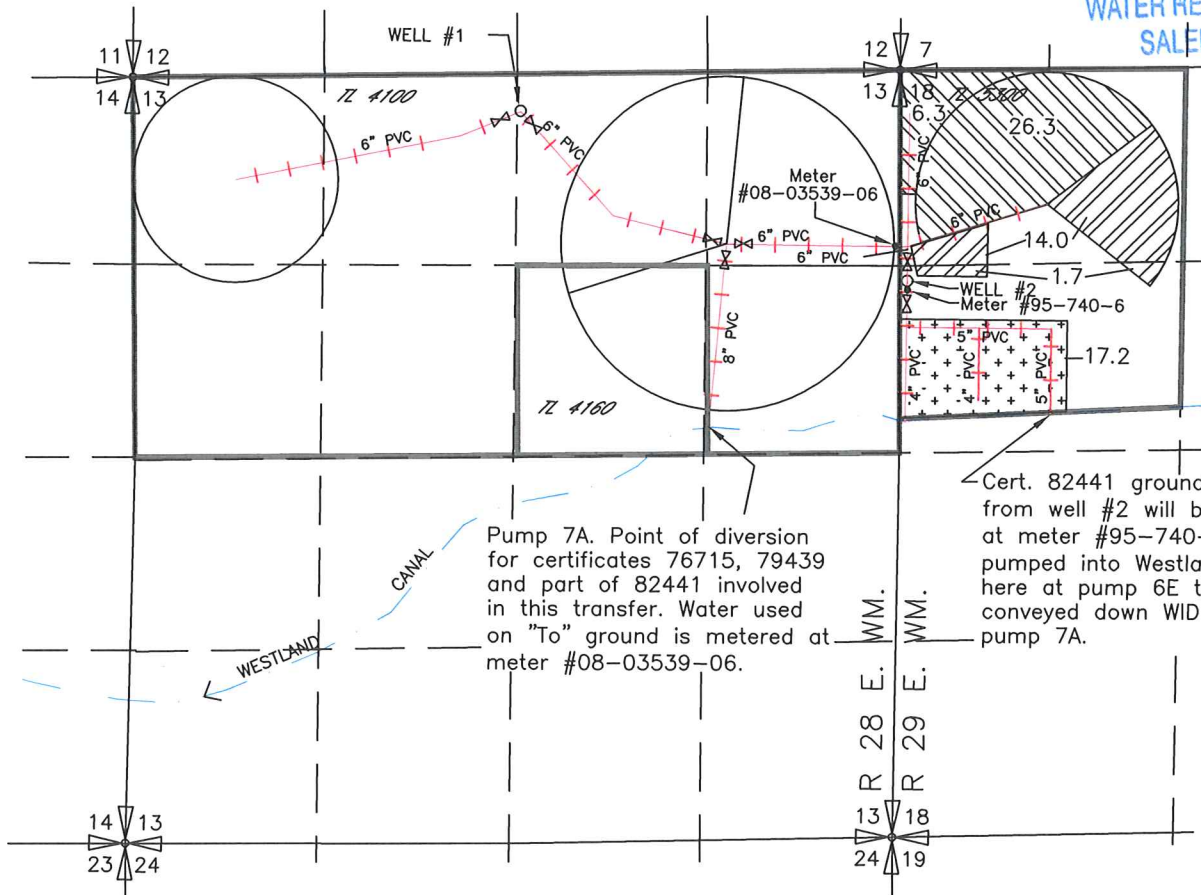
NOTE: THE PURPOSE OF THIS MAP IS TO IDENTIFY THE APPROXIMATE LOCATION OF THE WATER RIGHT. IT IS NOT INTENDED TO PROVIDE INFORMATION RELATIVE TO THE LOCATION OF PROPERTY OWNERSHIP BOUNDARY LINES.

2011 WESTLAND IRRIGATION DISTRICT
 TEMPORARY TRANSFER
 DOUBLE M RANCH INC
 CERTIFICATES 76715, 79439 & 82441
 T3N, R 28 & 29 E, W.M.

RECEIVED



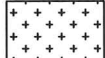
APR 07 2011

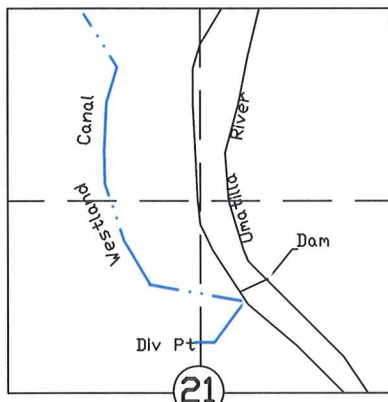
WATER RESOURCES DEPT
 SALEM OREGON



WELL #1 Located 270' South & 2540' West from the NE corner section 13, T3N, R28E, WM

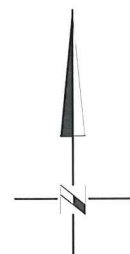
WELL #2 Located 1450' South & 3160' West from the N 1/4 corner section 18, T3N, R29E, WM
 T3N., R 29E., W.M.

-  Primary Cert. 76715 & Supplemental Cert. 79439
-  Certificate 82441
-  Certificate 82441 not involved in this transfer



⊗ Control Valve

This transfer is identical to district temporary transfers, 2008 T-10611, 2009 T-10834 and 2010 T-11043



SCALE IN FEET

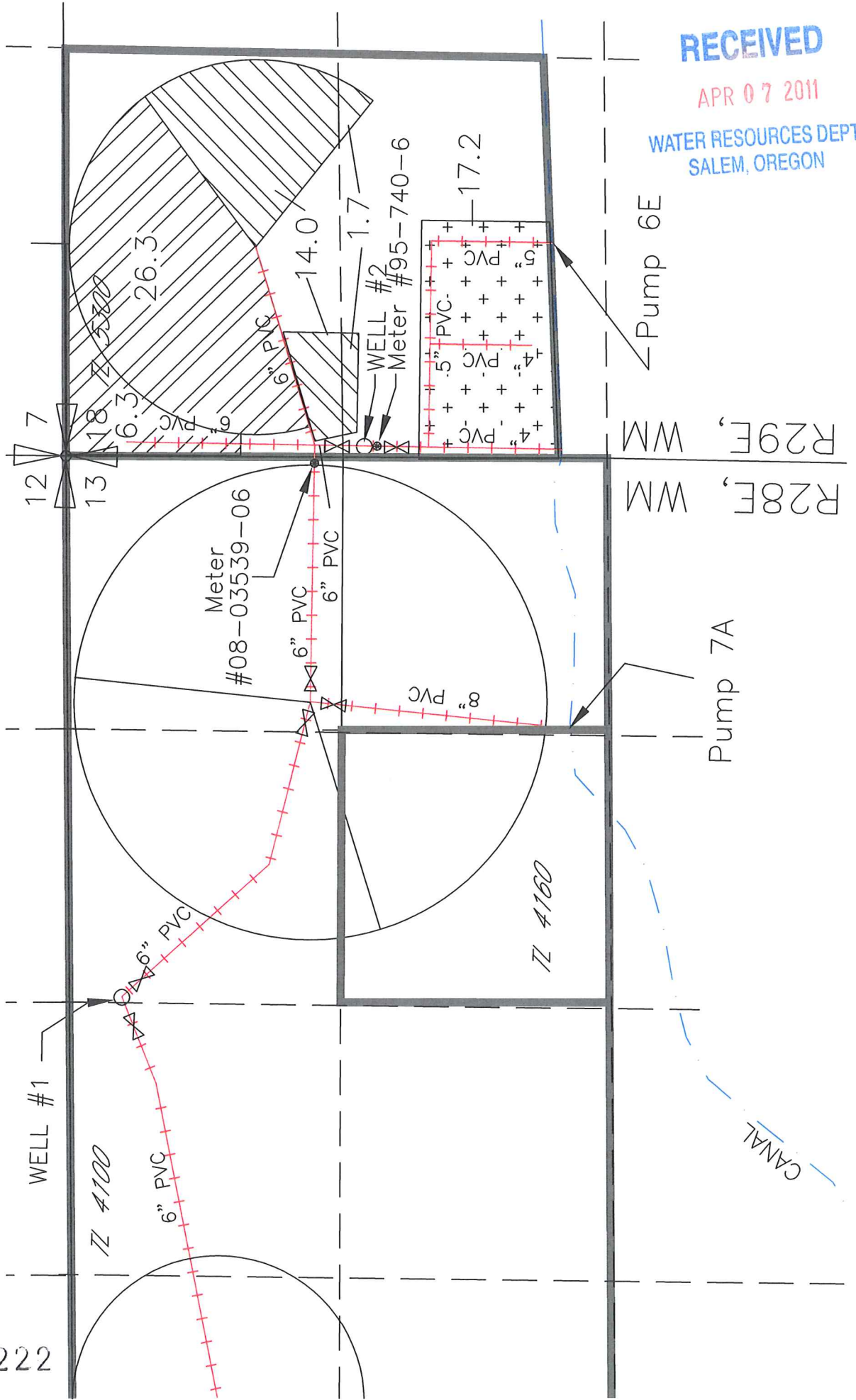
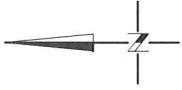
NOTE: THE PURPOSE OF THIS MAP IS TO IDENTIFY THE APPROXIMATE LOCATION OF THE WATER RIGHT. IT IS NOT INTENDED TO PROVIDE INFORMATION RELATIVE TO THE LOCATION OF PROPERTY OWNERSHIP BOUNDARY LINES.

T 11222

Double M Ranch, Inc.
 Distribution System Map for 2011
 Westland Irrigation District
 Temporary Transfer.
 T3N, R 28 & 29 E, W.M.

11222

NOTE: THE PURPOSE OF THIS MAP IS TO IDENTIFY THE APPROXIMATE LOCATION OF THE WATER RIGHTS & WATER DELIVERY SYSTEM. IT IS NOT INTENDED TO PROVIDE INFORMATION RELATIVE TO THE LOCATION OF PROPERTY OWNERSHIP BOUNDARY LINES.



RECEIVED

APR 07 2011

WATER RESOURCES DEPT
 SALEM, OREGON

