

RECEIVED
AUG 04 2010
WATER RESOURCES DEPT
SALEM, OREGON

0 660 1,320 Feet

USDA-FSA National Agriculture Imagery Program (2005)

T 11278

1 inch = 800 feet



RECEIVED
AUG 04 2011
WATER RESOURCES DEPT
SALEM, OREGON

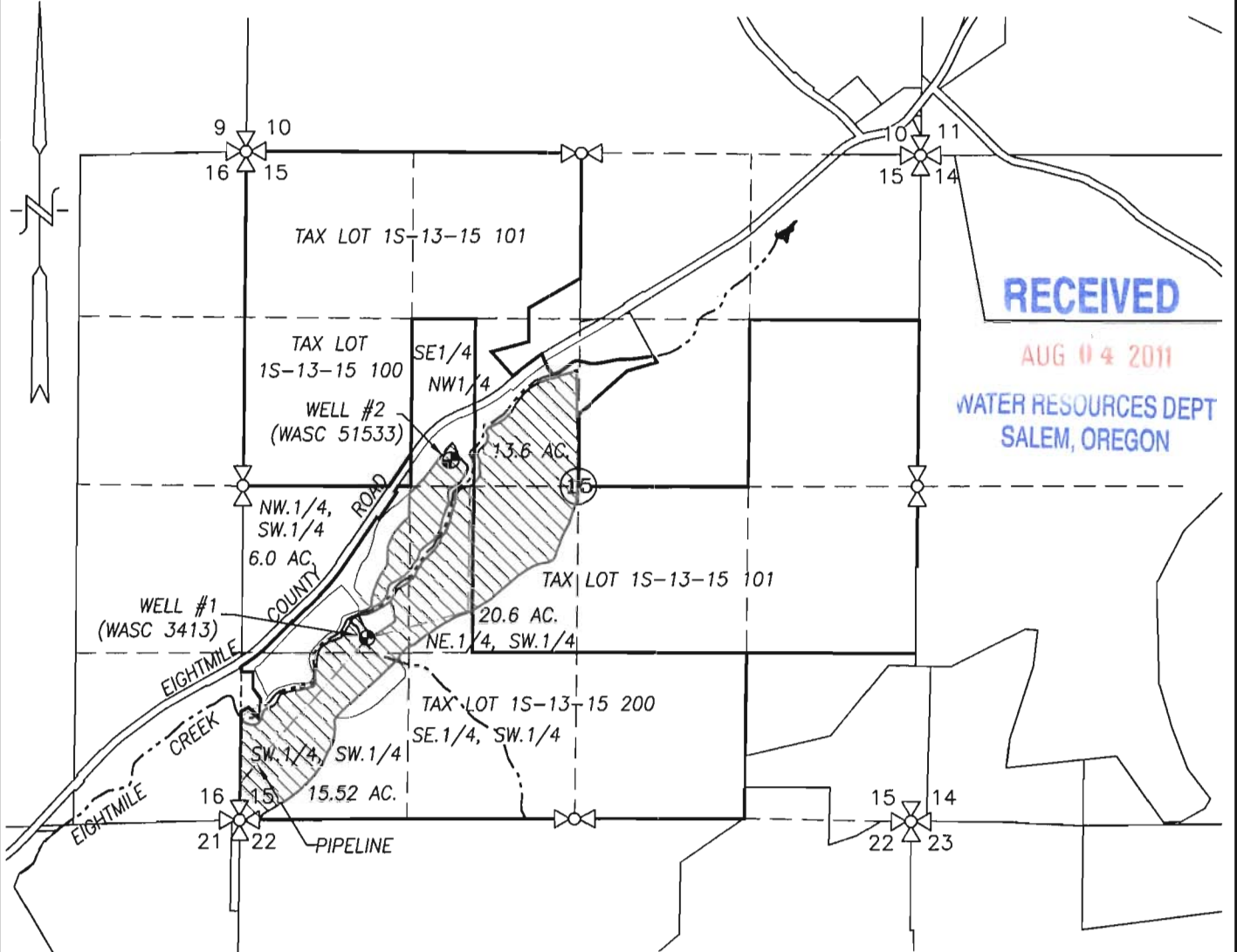
0 660 1,320 Feet

USDA-FSA National Agriculture Imagery Program (2009)

T 11278

1 inch = 800 feet

SECTION 15, TWP.1 S. RANGE 13 E. W.M.
 WASCO COUNTY, OREGON



- WELL #1: 1440' N. & 990' E. FROM SW COR. SEC. 15
- WELL #2: 2842' N. & 1662' E. FROM SW COR. SEC. 15

CERT. 56174 APPLICATION AREA

EXISTING IRRIGATION MAIN

WATER RIGHT
TRANSFER APPLICATION MAP

SCALE: 1" = 1320'



TRANSFER No. T 11278

IN THE NAME OF:
MONTE B. AND JAN D. WASSON

DATE: APRIL 27, 2011



EXPIRES: 06/30/2012

BY: **TENNESON ENGINEERING CORP.**
 3313 W. 2ND. STREET, SUITE 100
 THE DALLES, OREGON. 97058
 PH. 541-296-9177
 FAX 541-296-6657



NOTE:

"THIS MAP IS NOT INTENDED TO PROVIDE DIMENSIONS OR LOCATIONS OF PROPERTY OWNERSHIP LINES."