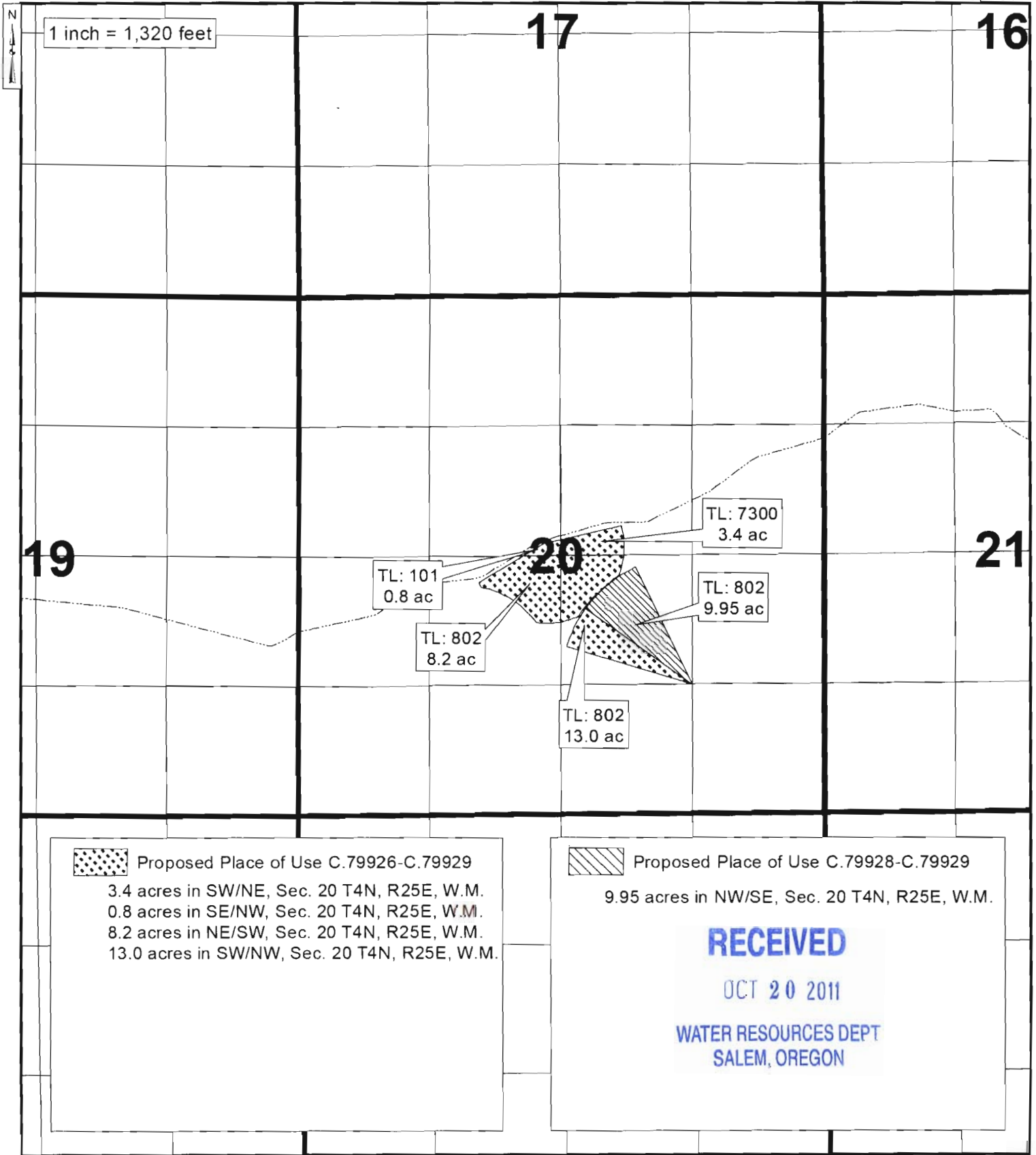


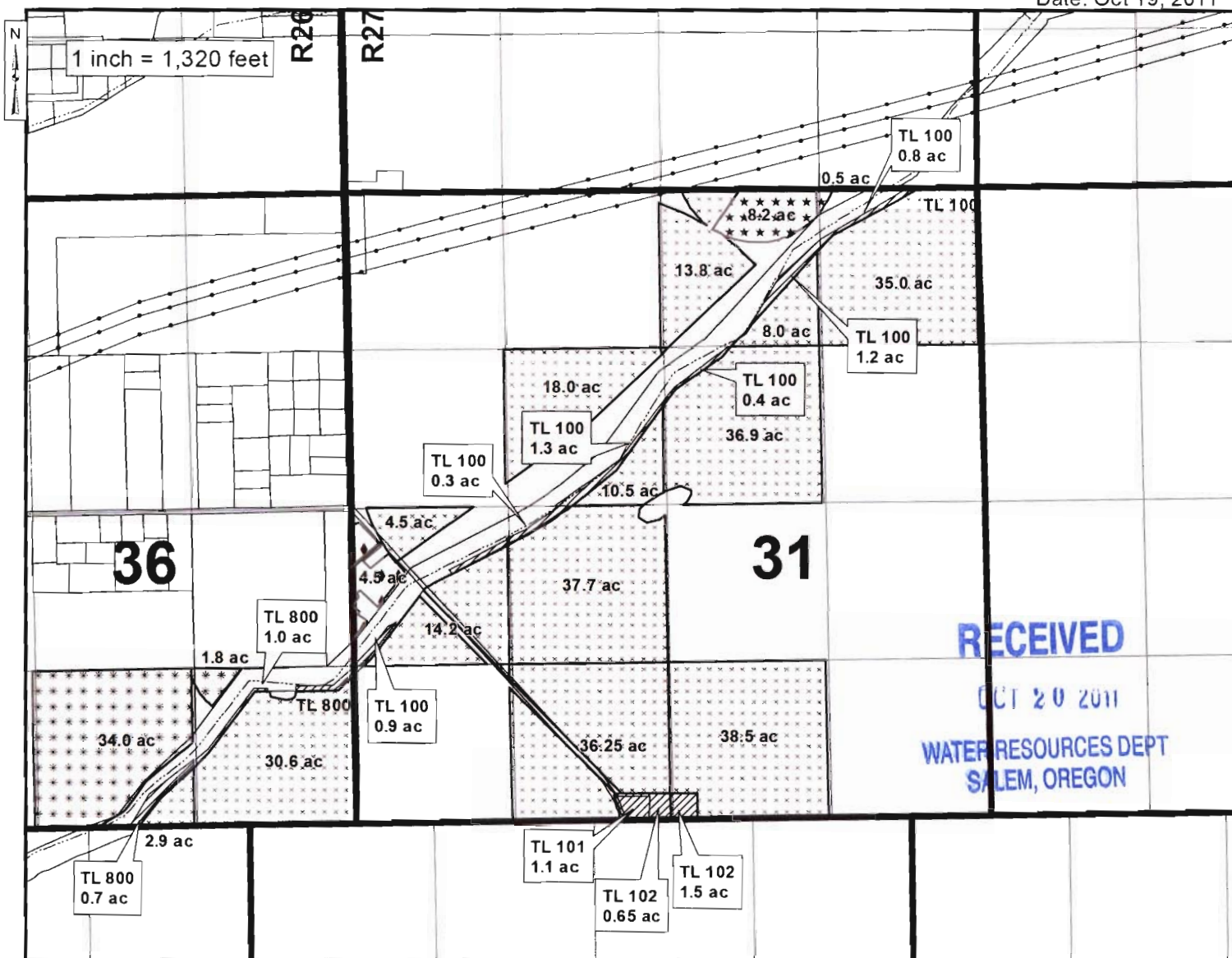
2012 PERMANENT DISTRICT TRANSFER
 TOWNSHIP 4 NORTH, RANGE 25 EAST, WILLAMETTE MERIDIAN
 West Extension Irrigation District - Morrow County
 "TO" LANDS

Date: Oct 18, 2011

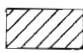






2012 PERMANENT DISTRICT TRANSFER
 TOWNSHIP 5 NORTH, RANGE 26 & 27 EAST, WILLAMETTE MERIDIAN
 West Extension Irrigation District - Morrow County
 "FROM" LANDS

Date: Oct 19, 2011



RECEIVED
 OCT 20 2011
 WATER RESOURCES DEPT
 SALEM, OREGON

-  Authorized Place of Use C.79928-C.79929
 - 0.8 acres in NE/NE, Sec. 31 T5N, R27E, W.M.
 - 1.2 acres in NW/NE, Sec. 31 T5N, R27E, W.M.
 - 0.4 acres in SW/NE, Sec. 31 T5N, R27E, W.M.
 - 1.3 acres in SE/NW, Sec. 31 T5N, R27E, W.M.
 - 0.3 acres in NE/SW, Sec. 31 T5N, R27E, W.M.
 - 0.9 acres in NW/SW, Sec. 31 T5N, R27E, W.M.
 - 1.75 acres in SE/SW, Sec. 31 T5N, R27E, W.M.
 - 1.5 acres in SW/SE, Sec. 31 T5N, R27E, W.M.
 - 0.7 acres in SW/SE, Sec. 36 T5N, R26E, W.M.
 - 1.0 acres in SE/SE, Sec. 36 T5N, R26E, W.M.
-  Remaining Water Right C.79926-C.79929
 - 34.0 acres in SW/SE, Sec. 36 T5N, R26E, W.M.
 - 1.8 acres in SE/SE, Sec. 36 T5N, R26E, W.M.
-  Remaining Water Right C.79924-C.79929
 - 4.5 acres in NE/SW, Sec. 31 T5N, R27E, W.M.

-  Remaining Water Right C.79928-C.79929
 - 35.0 acres in NE/NE, Sec. 31 T5N, R27E, W.M.
 - 21.8 acres in NW/NE, Sec. 31 T5N, R27E, W.M.
 - 36.9 acres in SW/NE, Sec. 31 T5N, R27E, W.M.
 - 28.5 acres in SE/NW, Sec. 31 T5N, R27E, W.M.
 - 37.7 acres in NE/SW, Sec. 31 T5N, R27E, W.M.
 - 18.7 acres in NW/SW, Sec. 31 T5N, R27E, W.M.
 - 36.25 acres in SE/SW, Sec. 31 T5N, R27E, W.M.
 - 38.5 acres in SW/SE, Sec. 31 T5N, R27E, W.M.
 - 2.9 acres in SW/SE, Sec. 36 T5N, R26E, W.M.
 - 30.6 acres in SE/SE, Sec. 36 T5N, R26E, W.M.
-  Remaining Water Right C.79928
 - 0.5 acres in NE/NE, Sec. 31 T5N, R27E, W.M.
 - 8.2 acres in NW/NE, Sec. 31 T5N, R27E, W.M.

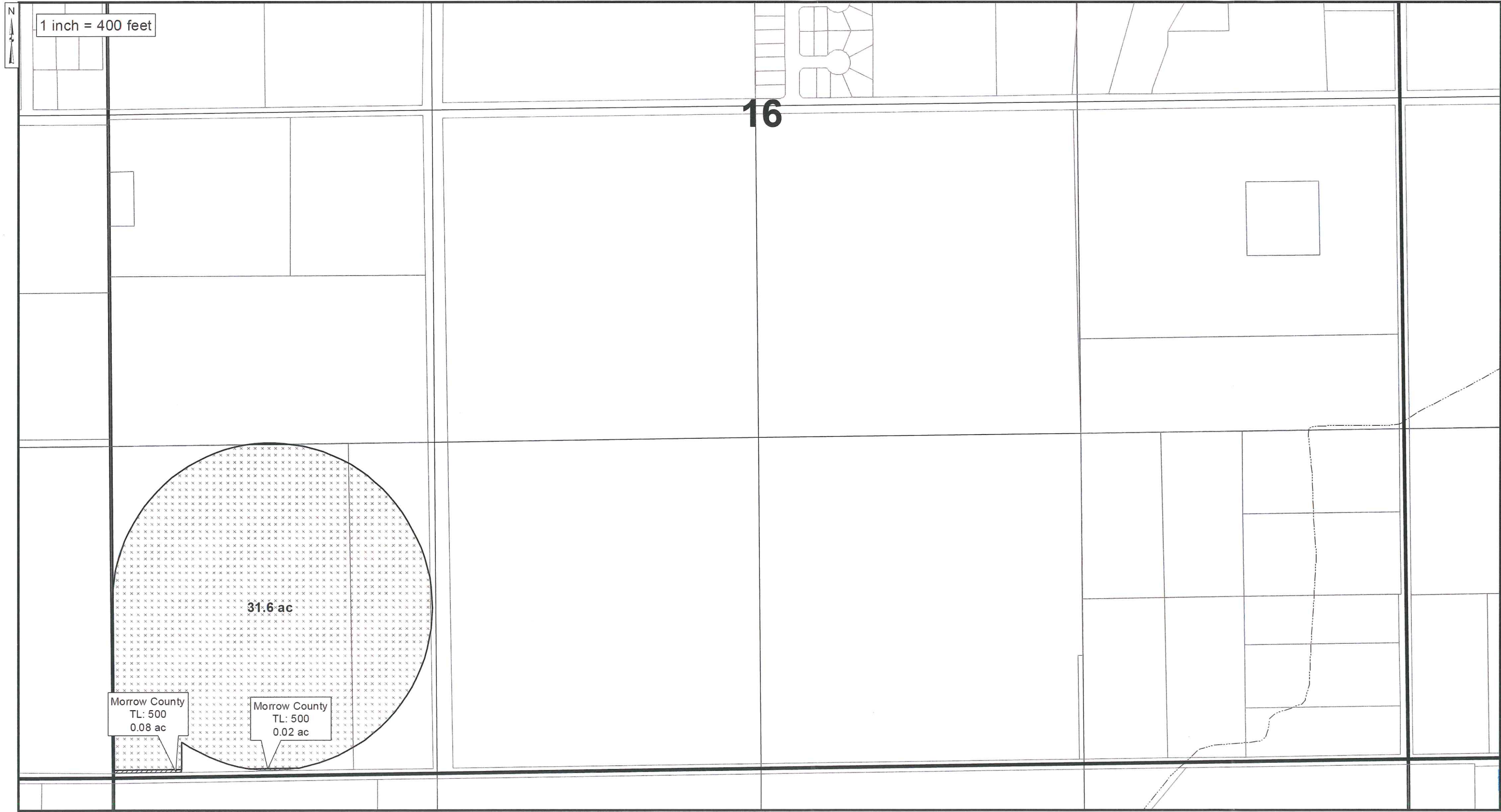



T 11300


THE PURPOSE OF THIS MAP IS TO IDENTIFY THE LOCATION OF THE WATER RIGHT. IT IS NOT INTENDED TO PROVIDE INFORMATION RELATED TO THE LOCATION OF PROPERTY OWNERSHIP BOUNDARY LINES.

2012 PERMANENT DISTRICT TRANSFER
TOWNSHIP 4 NORTH, RANGE 25 EAST, WILLAMETTE MERIDIAN
West Extension Irrigation District - Morrow County
"FROM" LANDS

Date: Oct 18, 2011



 Authorized Place of Use C.79928-C.79929
0.1 acres in SW/SW, Sec. 16 T4N, R25E, W.M.

 Remaining Water Right C.79928-C.79929
31.6 acres in SW/SW, Sec. 16 T4N, R25E, W.M.

RECEIVED
OCT 20 2011

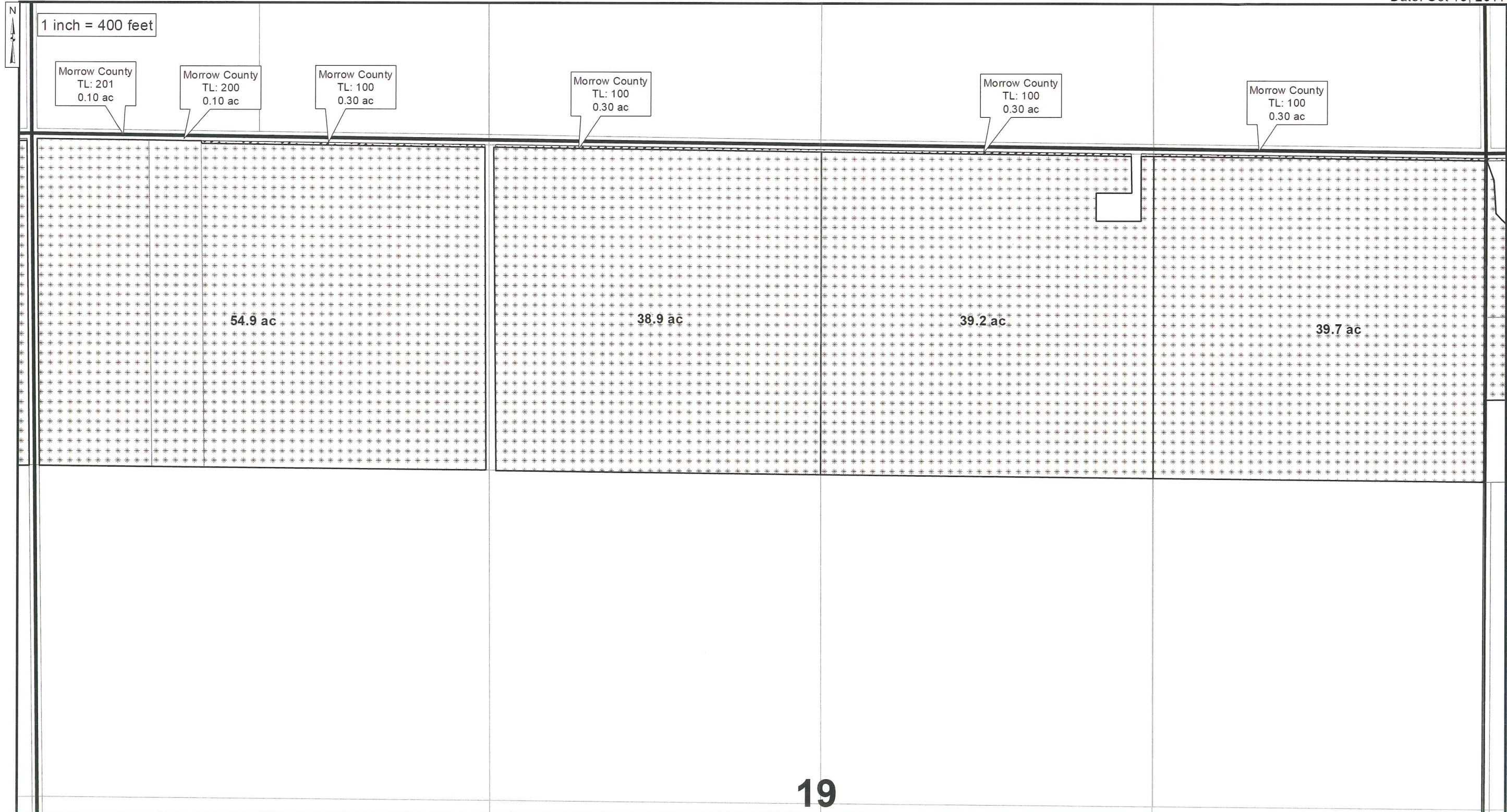


THE PURPOSE OF THIS MAP IS TO IDENTIFY THE LOCATION OF THE WATER RIGHT. IT IS NOT INTENDED TO PROVIDE INFORMATION RELATED TO THE LOCATION OF PROPERTY OWNERSHIP BOUNDARY LINES.


T 11309


2012 PERMANENT DISTRICT TRANSFER
 TOWNSHIP 4 NORTH, RANGE 25 EAST, WILLAMETTE MERIDIAN
 West Extension Irrigation District - Morrow County
 "FROM" LANDS

Date: Oct 18, 2011



19

 Authorized Place of Use C.79926-C.79929
 0.3 acres in NE/NE, Sec. 19 T4N, R25E, W.M.
 0.3 acres in NW/NE, Sec. 19 T4N, R25E, W.M.
 0.3 acres in NE/NW, Sec. 19 T4N, R25E, W.M.
 0.5 acres in NW/NW, Sec. 19 T4N, R25E, W.M.

 Remaining Water Right C.79926 & C.79929
 39.7 acres in NE/NE, Sec. 19 T4N, R25E, W.M.
 39.2 acres in NW/NE, Sec. 19 T4N, R25E, W.M.
 38.9 acres in NE/NW, Sec. 19 T4N, R25E, W.M.
 54.9 acres in NW/NW, Sec. 19 T4N, R25E, W.M.



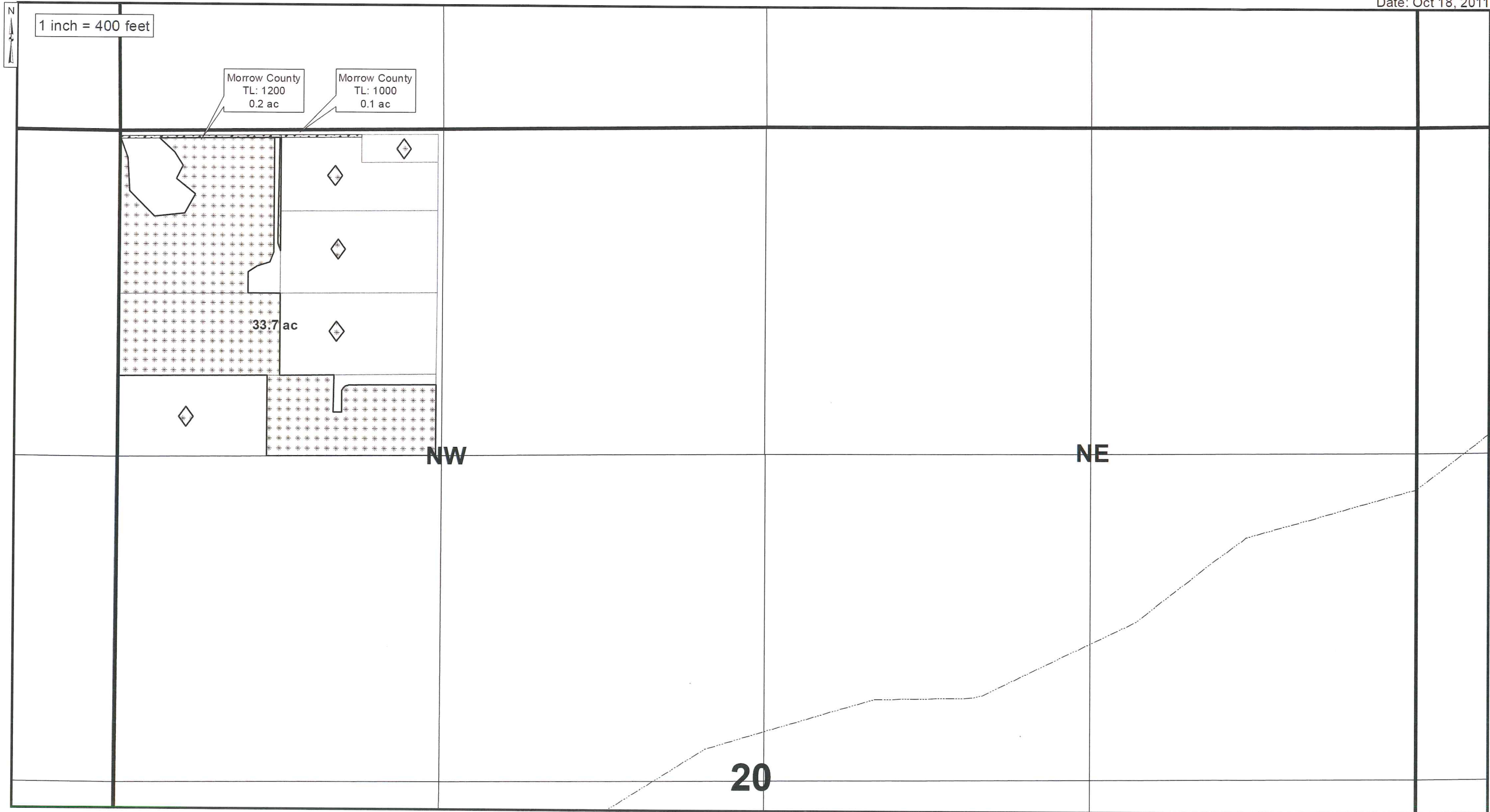
RECEIVED
 OCT 20 2011
 WATER RESOURCES DEPT
 SALEM, OREGON


THE PURPOSE OF THIS MAP IS TO IDENTIFY THE LOCATION OF THE WATER RIGHT. IT IS NOT INTENDED TO PROVIDE INFORMATION RELATED TO THE LOCATION OF PROPERTY OWNERSHIP BOUNDARY LINES.


T 11309

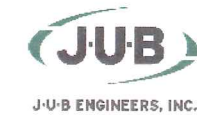
2012 PERMANENT DISTRICT TRANSFER
TOWNSHIP 4 NORTH, RANGE 25 EAST, WILLAMETTE MERIDIAN
West Extension Irrigation District - Morrow County
"FROM" LANDS

Date: Oct 18, 2011



 Authorized Place of Use C.79926-C.79929
0.3 acres in NW/NW, Sec. 20 T4N, R25E, W.M.

 Remaining Water Right C.79926-C.79929
33.7 acres in NW/NW, Sec. 20 T4N, R25E, W.M.



WATER RESOURCES DEPT
SALEM, OREGON

RECEIVED

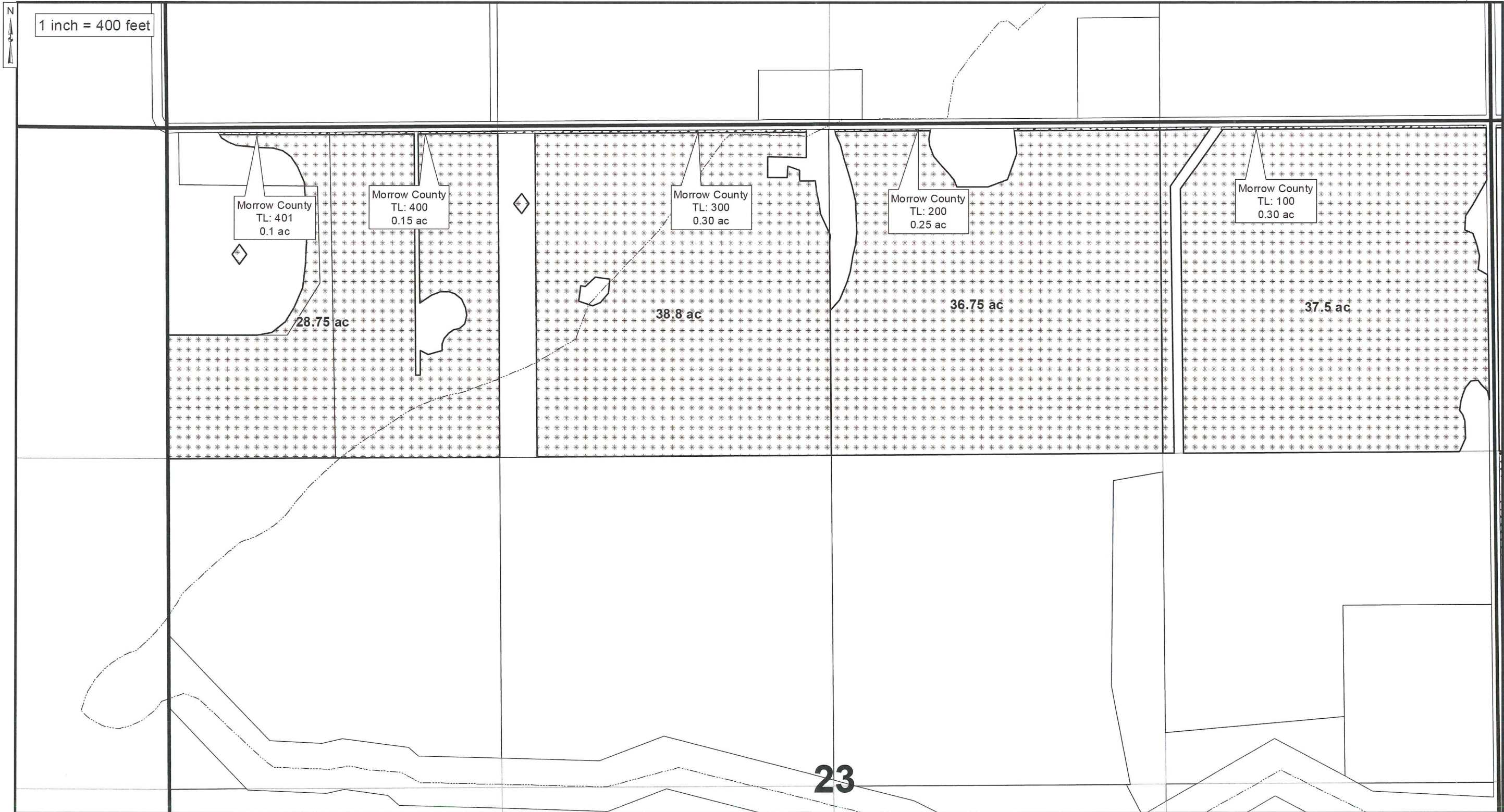
OCT 20 2011


T 11309


THE PURPOSE OF THIS MAP IS TO IDENTIFY THE LOCATION OF THE WATER RIGHT. IT IS NOT INTENDED TO PROVIDE INFORMATION RELATED TO THE LOCATION OF PROPERTY OWNERSHIP BOUNDARY LINES.

2012 PERMANENT DISTRICT TRANSFER
 TOWNSHIP 4 NORTH, RANGE 24 EAST, WILLAMETTE MERIDIAN
 West Extension Irrigation District - Morrow County
 "FROM" LANDS

Date: Oct 18, 2011



 Authorized Place of Use C.79926-C.79929
 0.3 acres in NE/NE, Sec. 23 T4N, R24E, W.M.
 0.25 acres in NW/NE, Sec. 23 T4N, R24E, W.M.
 0.3 acres in NE/NW, Sec. 23 T4N, R24E, W.M.
 0.25 acres in NW/NW, Sec. 23 T4N, R24E, W.M.

 Remaining Water Right C.79926 & C.79929
 37.5 acres in NE/NE, Sec. 23 T4N, R24E, W.M.
 36.75 acres in NW/NE, Sec. 23 T4N, R24E, W.M.
 38.8 acres in NE/NW, Sec. 23 T4N, R24E, W.M.
 28.75 acres in NW/NW, Sec. 23 T4N, R24E, W.M.



RECEIVED

OCT 20 2011

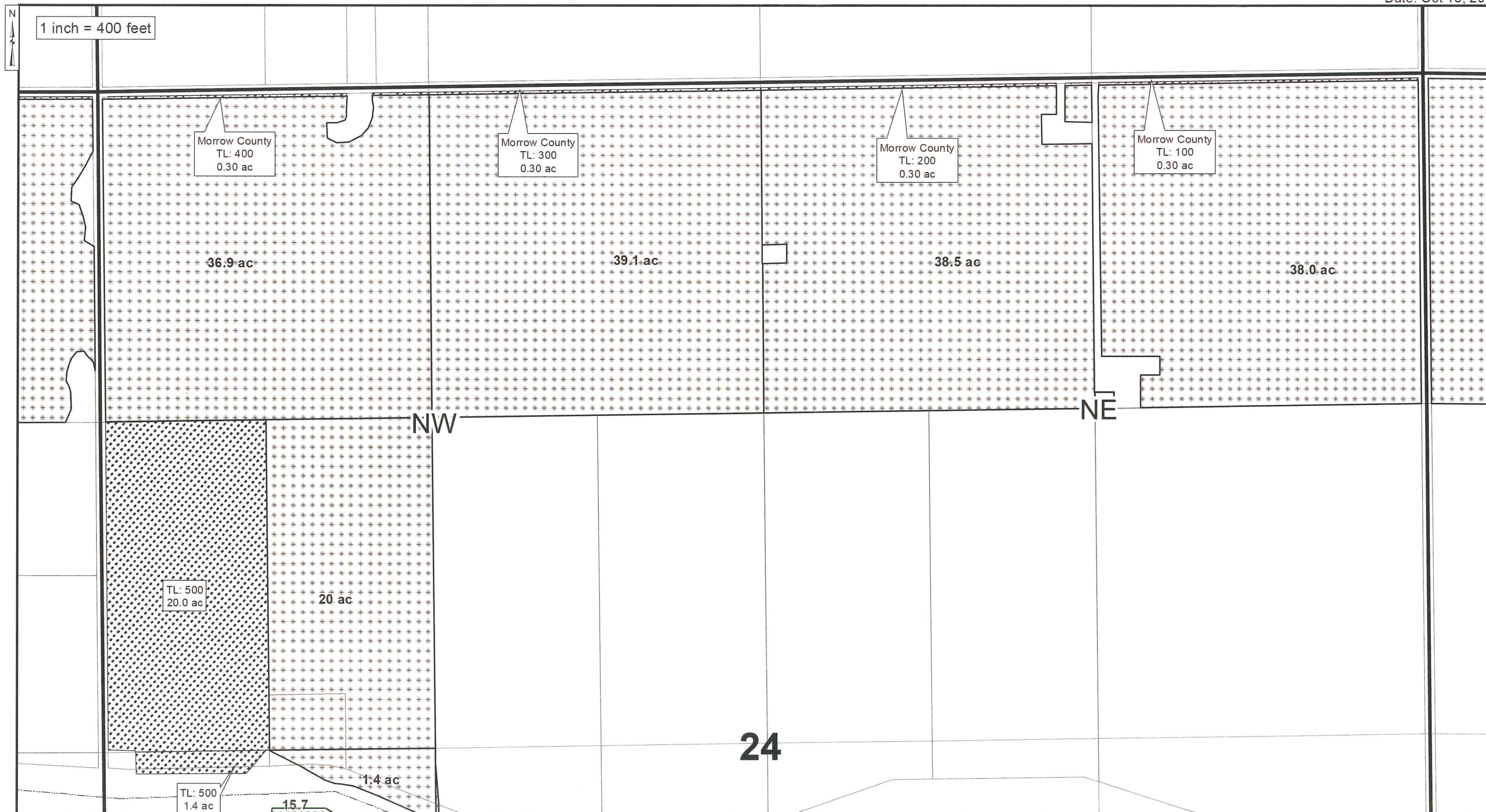
WATER RESOURCES DEPT
 SALEM, OREGON


THE PURPOSE OF THIS MAP IS TO IDENTIFY THE LOCATION OF THE WATER RIGHT. IT IS NOT INTENDED TO PROVIDE INFORMATION RELATED TO THE LOCATION OF PROPERTY OWNERSHIP BOUNDARY LINES.

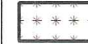
T 11309


2012 PERMANENT DISTRICT TRANSFER
 TOWNSHIP 4 NORTH, RANGE 24 EAST, WILLAMETTE MERIDIAN
 West Extension Irrigation District - Morrow County
 "FROM" LANDS

Date: Oct 18, 2011



 Authorized Place of Use C.79926-C.79929
 0.3 acres in NE/NE, Sec. 24 T4N, R24E, W.M.
 0.3 acres in NW/NE, Sec. 24 T4N, R24E, W.M.
 0.3 acres in NE/NW, Sec. 24 T4N, R24E, W.M.
 0.3 acres in NW/NW, Sec. 24 T4N, R24E, W.M.
 20.0 acres in SW/NW, Sec. 24 T4N, R24E, W.M.
 1.4 acres in NW/SW, Sec. 24 T4N, R24E, W.M.

 Remaining Water Right C.79926 & C.79929
 38.0 acres in NE/NE, Sec. 24 T4N, R24E, W.M.
 38.5 acres in NW/NE, Sec. 24 T4N, R24E, W.M.
 39.1 acres in NE/NW, Sec. 24 T4N, R24E, W.M.
 36.9 acres in NW/NW, Sec. 24 T4N, R24E, W.M.
 20.0 acres in SW/NW, Sec. 24 T4N, R24E, W.M.
 1.4 acres in NW/SW, Sec. 24 T4N, R24E, W.M.

 Remaining Water Right C.79928 & C.79929
 15.7 acres in NW/SW, Sec. 24 T4N, R24E, W.M.

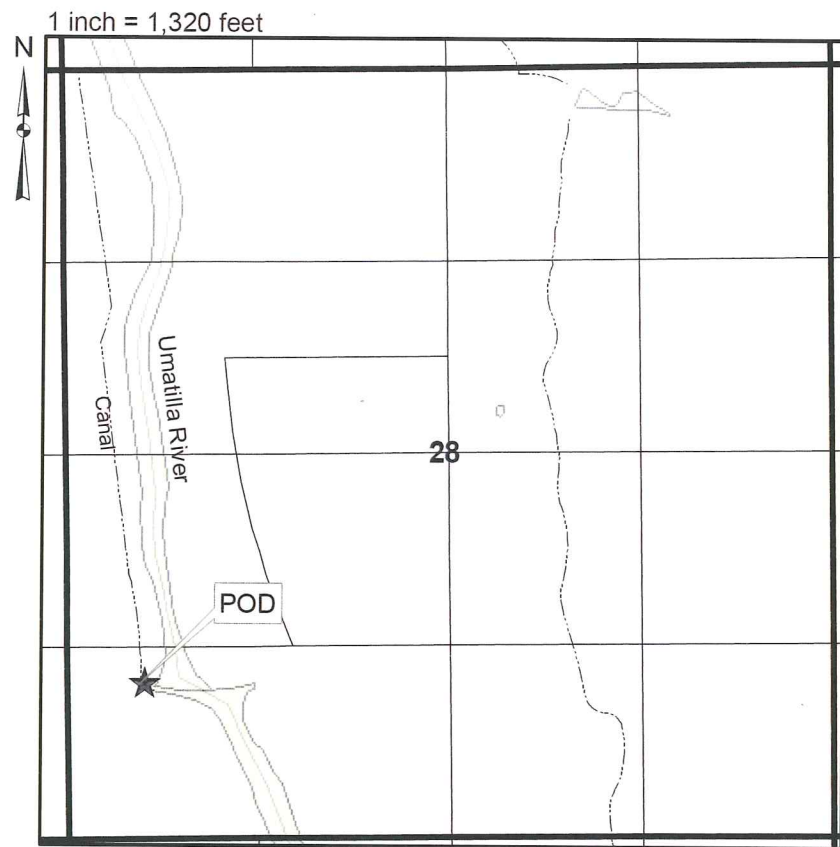
T 11309



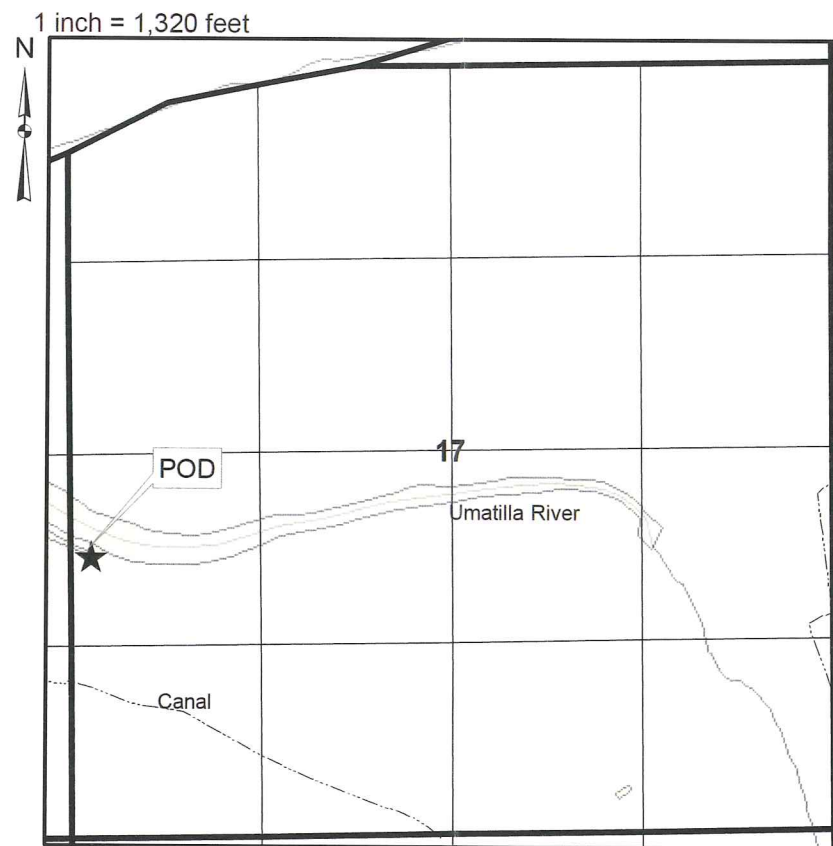
RECEIVED
 OCT 20 2011

THE PURPOSE OF THIS MAP IS TO IDENTIFY THE LOCATION OF THE WATER RIGHT. IT IS NOT INTENDED TO PROVIDE INFORMATION RELATED TO THE LOCATION OF PROPERTY OWNERSHIP BOUNDARY LINES.

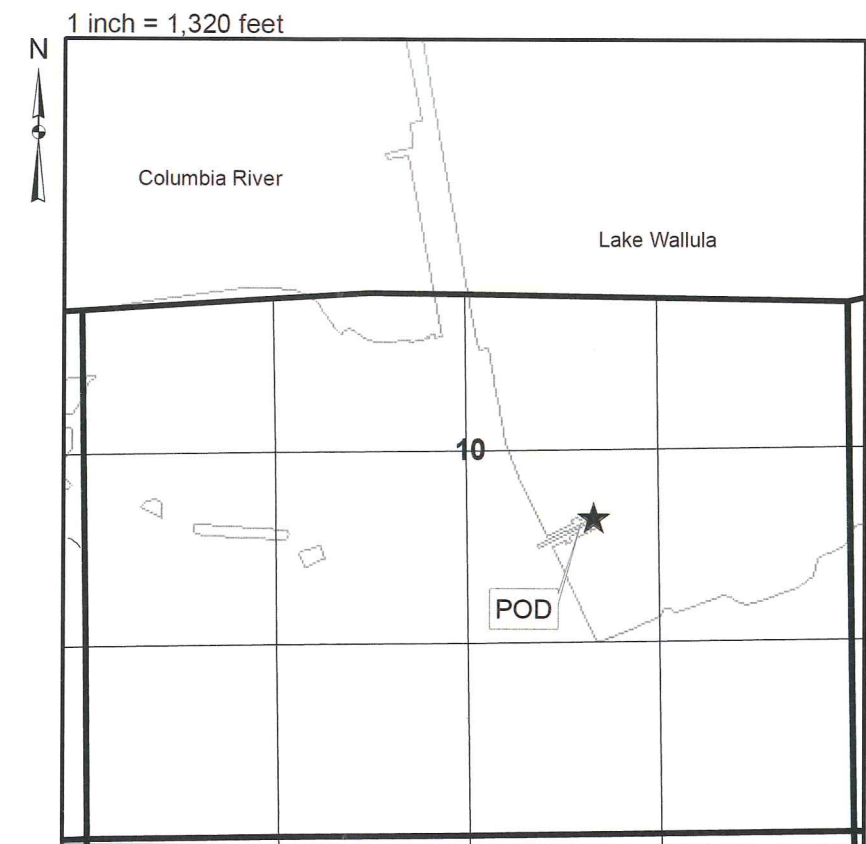
West Extension Irrigation District Point of Diversion



5N 28E W.M Sec. 28, SW/SW: 1100' N and 520' E from the SW Corner of Section 28.



5N 28E W.M Sec. 17, NW/SW: 1900' N and 150' E from the SW Corner of Section 17.



5N 28E W.M Sec. 10, NW/SE: 2150' N and 3500' E from the SW Corner of Section 10.

T 11309

RECEIVED
OCT 20 2011
WATER RESOURCES DEPT
SALEM, OREGON

THE PURPOSE OF THIS MAP IS TO IDENTIFY THE LOCATION OF THE POINT OF DIVERSION. IT IS NOT INTENDED TO PROVIDE INFORMATION RELATED TO THE LOCATION OF PROPERTY OWNERSHIP BOUNDARY LINES.